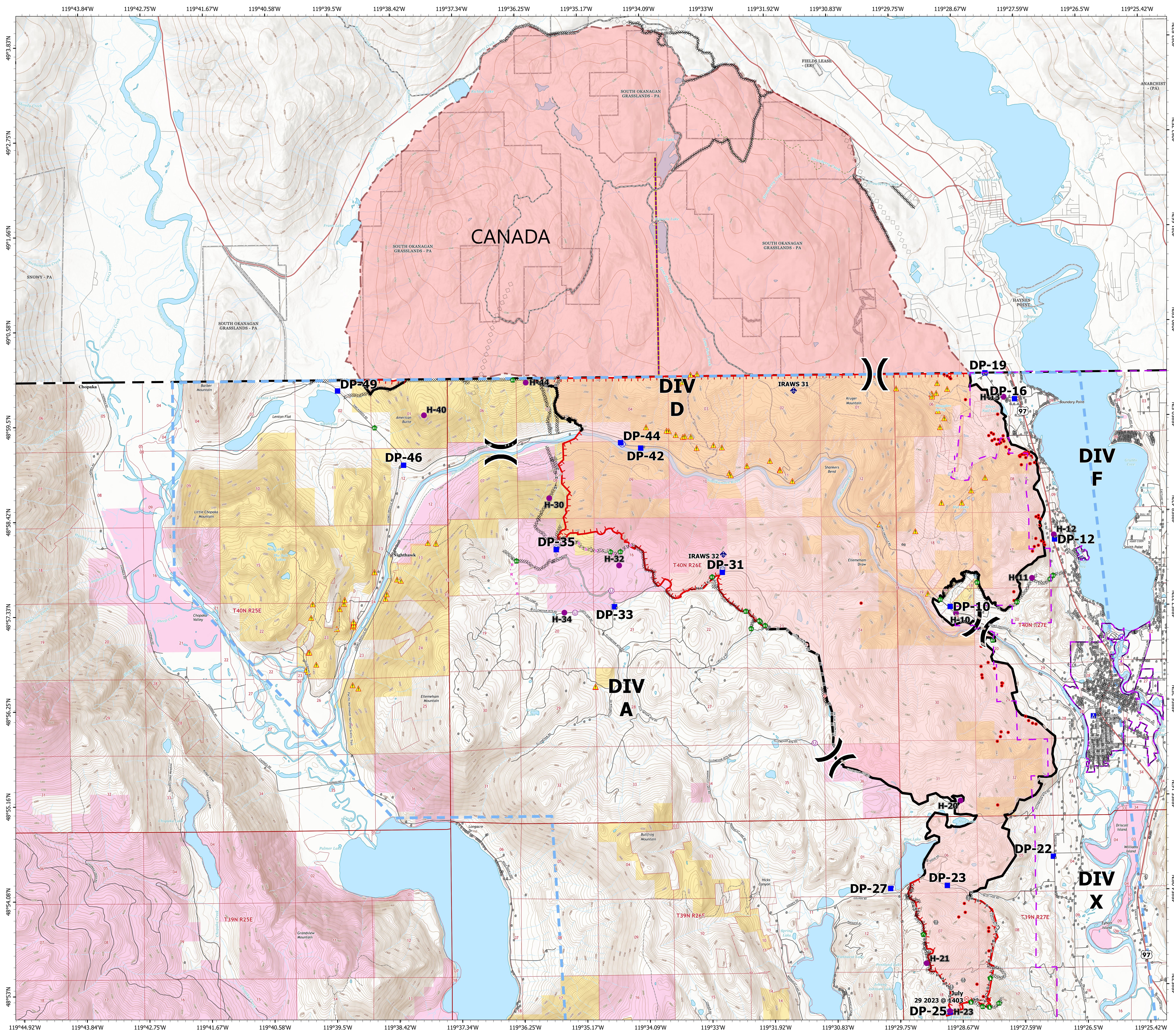


# OPS Map

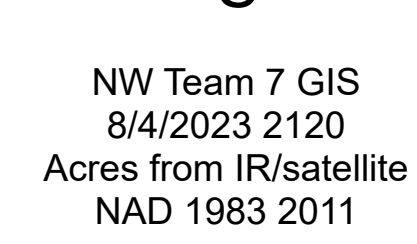
Eagle Bluff  
WA-NES-001759  
08/05/2023

16,428 acres as of 8/02/2023 @ 1522

- Helispot
- Unimproved Landing Area
- Division Break
- Drop Point
- Camp
- Hot Spot - Spot Fire
- Fire Origin
- Value at Risk
- Other
- Fence - Cut/Damaged
- Dozer Push
- Culvert
- Mobile Weather Unit
- Water Source
- Wildfire Daily Fire Perimeter
- Address Points
- AML Hazards
- Pump
- Water Tank
- IR Isolated Heat Source
- Completed Dozer Line
- Completed Hand Line
- Completed Road as Line
- Planned Road as Line
- Planned Secondary Line
- Access or Improved Road
- Temporary Flight Restriction
- Contained
- Uncontained
- US/Canada Border
- County
- State
- Forest Service
- BLM
- Parks (Canada)
- Secondary Hwy
- Local Road
- 4WD
- Trail
- OKANOGAN COUNTY F.P.D. 1
- OROVILLE
- Canadian Wildfire Layers**
- Trail
- Road - Modified Existing
- Road
- Division Break
- Completed Machine Line
- Completed Handline
- Aerial Retardant Drop
- Canadian Wildfire Perimeter



July 29 2023 @ 1403  
DP-25 H-23



N  
W E  
S

NW Team 7 GIS  
8/4/2023 2120  
Acres from IR/satellite  
NAD 1983 2011



NORTHWEST INCIDENT MANAGEMENT TEAM