

Briefing Map

Eagle Bluff
WA-NES-001759
08/06/2023

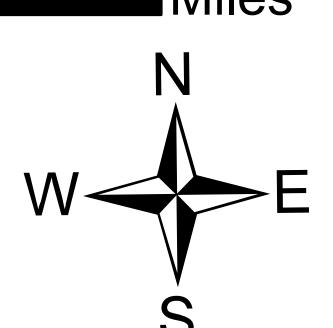
16,428 acres as of 8/02/2023 @ 1522

- Helispot
- Unimproved Landing Area
-) Division Break
- Drop Point
- ⊠ Camp
- Hot Spot - Spot Fire
- ⊗ Fire Origin
- ⬇ Value at Risk
- ⬇ Other
- ⬇ Repair Point
- ⊠ Fence - Cut/Damaged
- ⬇ Dozer Push
- ⬇ Culvert
- ⬇ Mobile Weather Unit
- ⊠ Water Source
- ▭ Wildfire Daily Fire Perimeter
- ⊠ Pump
- ⊠ Water Tank
- IR Isolated Heat Source
- ⊠ Completed Dozer Line
- ⊠ Completed Hand Line
- ⊠ Completed Road as Line
- ⊠ Planned Road as Line
- ⊠ Planned Secondary Line
- ⊠ Access or Improved Road
- ⊠ Other
- ⊠ Temporary Flight Restriction
- ⊠ Contained
- ⊠ Uncontained
- ⊠ US/Canada Border
- ⊠ County
- ⊠ Parks (Canada)
- ⊠ Secondary Hwy
- ⊠ Local Road
- ⊠ 4WD

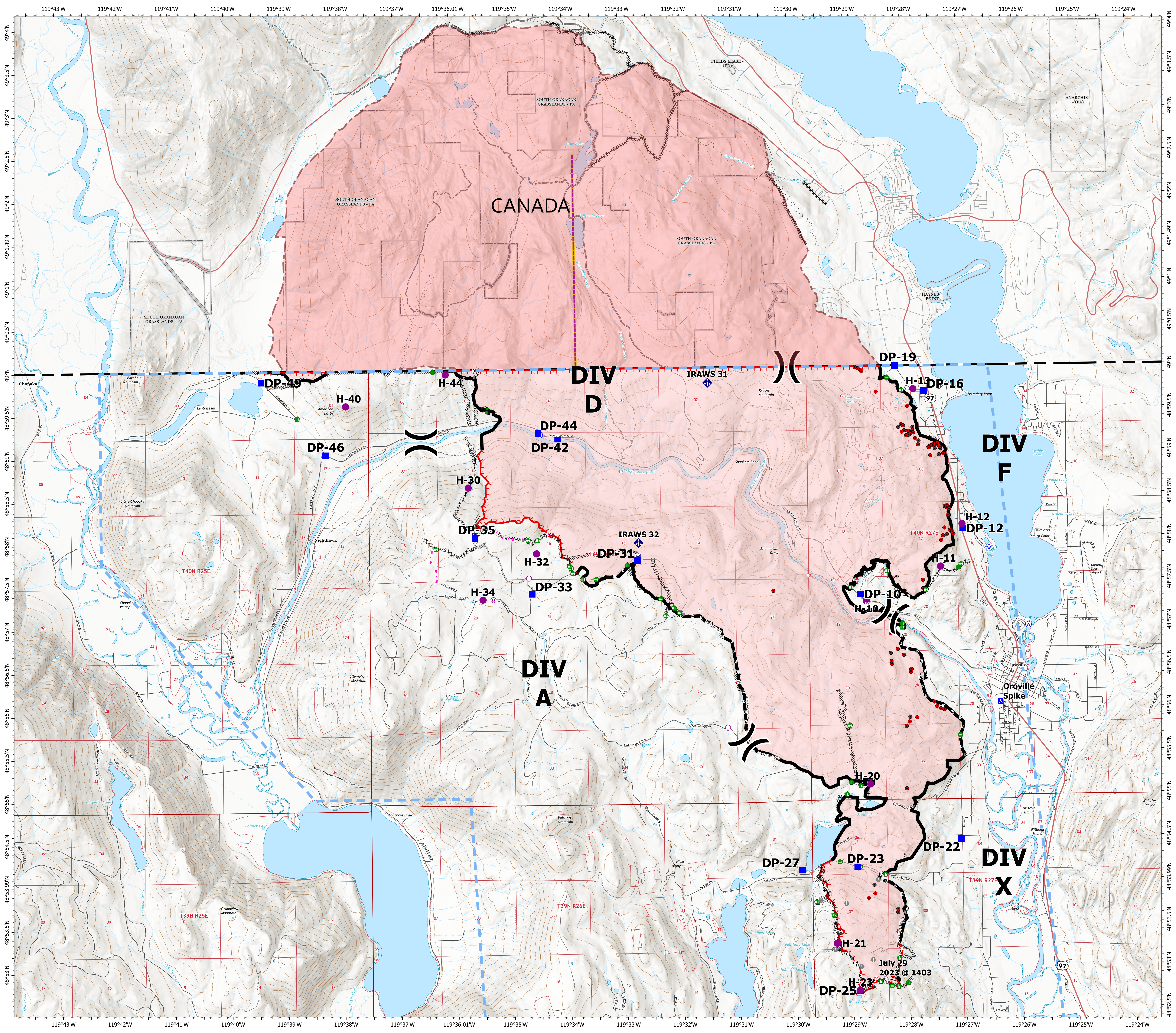
Canadian Wildfire Layers

- ⊠ Trail
- ⊠ Road - Modified Existing
- ⊠ Road
- ⊠ Division Break
- ⊠ Completed Machine Line
- ⊠ Completed Handline
- ⊠ Aerial Retardant Drop
- ⊠ Canadian Wildfire Perimeter

0 0.5 1 2 Miles



NW Team 7 GIS
8/5/2023 2045
Acres from IR/satellite
NAD 1983 2011



July 29
2023 @ 1403