

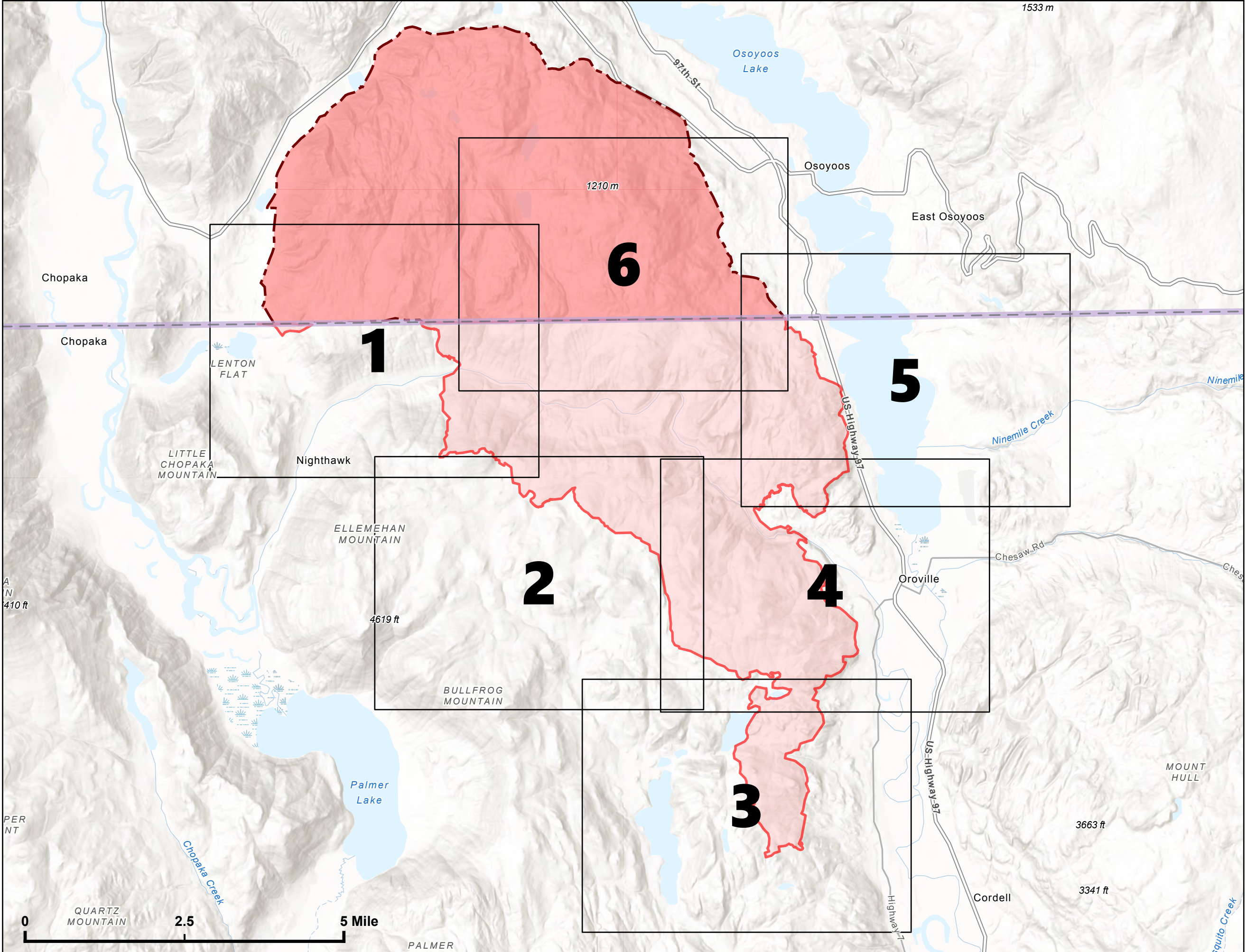


IAP Index Map

Eagle Bluff
WA-NES-001759
08/06/2023

16,428 acres as of 8/02/2023 @ 1522

-  Wildfire Daily Fire Perimeter
-  Canadian Wildfire Perimeter



NW Team 7 GIS
8/5/2023 2151
Acres from IR/satellite
NAD 1983 2011



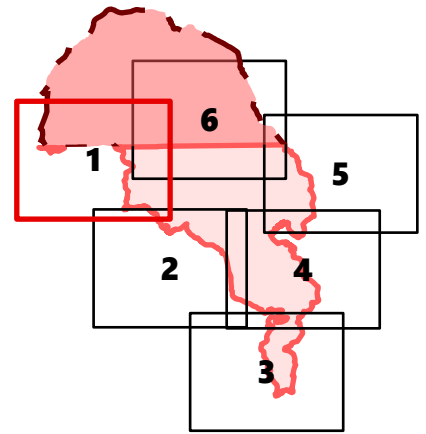
IAP Map

Eagle Bluff
WA-NES-001759
08/06/2023

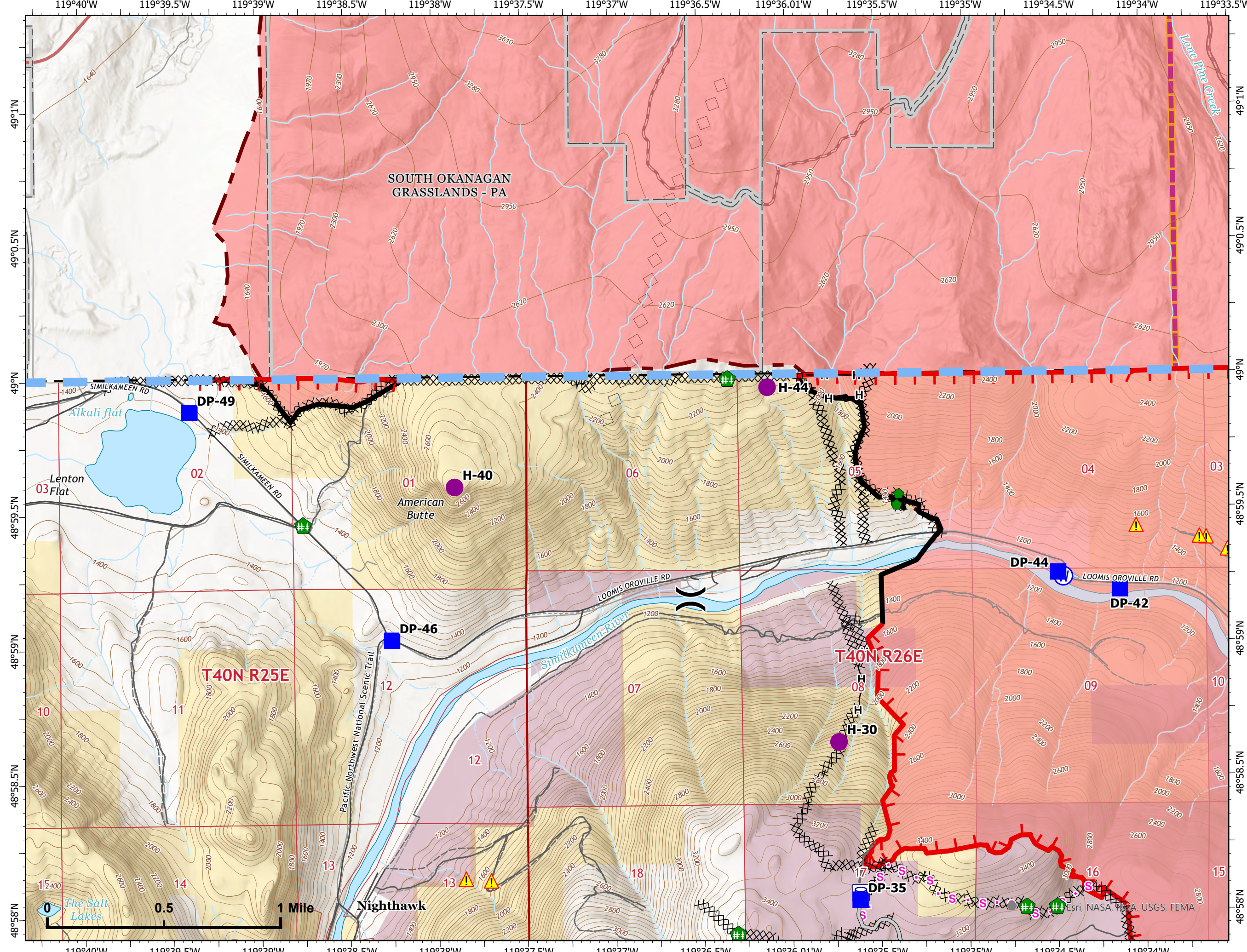
16,428 acres as of 8/02/2023 @ 1522

- Helispot
- () Division Break
- Drop Point
- Other
- Repair Point
- Fence - Cut/Damaged
- ⊕ Water Source
- ▭ Wildfire Daily Fire Perimeter
- ⊕ Water Tank
- ⊗ Completed Dozer Line
- H Completed Hand Line
- S Planned Secondary Line
- ▬ Access or Improved Road
- ▬ Other
- ▬ Temporary Flight Restriction
- ▬ Contained
- ▬ Uncontained
- ⚠ AML Hazards
- ▬ US/Canada Border
- ▬ County or Equivalent
- ▬ Parks (Canada)
- ▬ Local Road
- ▬ 4WD
- ▬ Trail
- ▬ BLM
- ▬ State
- ▬ Forest Service

- Canadian Wildfire Layers**
- ▬ Canadian Wildfire Perimeter
 - ▬ Road - Modified Existing
 - ▬ Road
 - ▬ Division Break
 - ◇ Aerial Retardant Drop



NW Team 7 GIS
8/6/2023 0824
Acres from IR/satellite
NAD 1983 2011



0.5 1 Mile

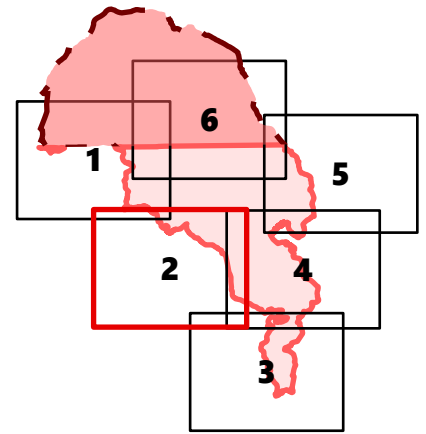
Esri, NASA, NOAA, USGS, FEMA

IAP Map

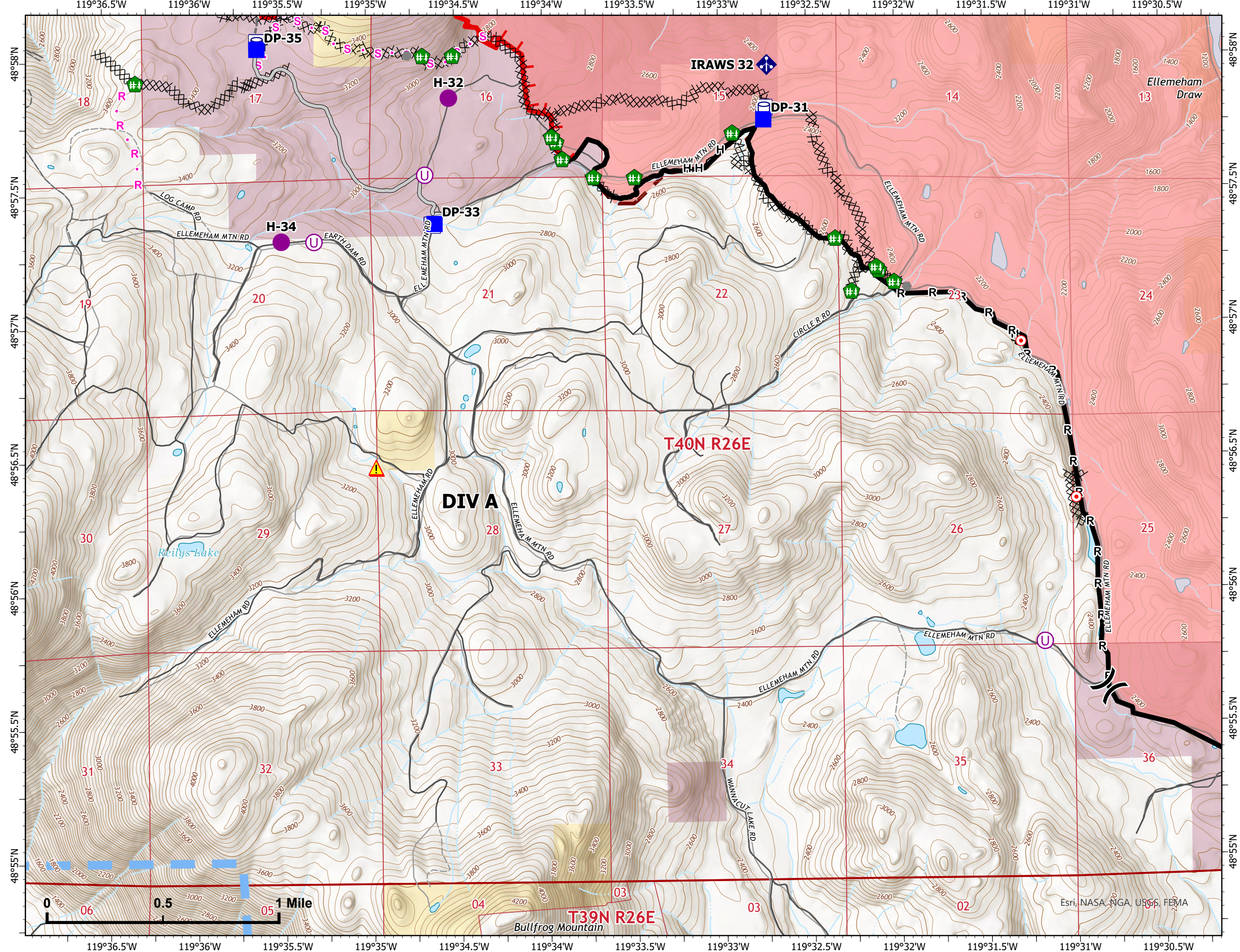
Eagle Bluff
WA-NES-001759
08/06/2023

16,428 acres as of 8/02/2023 @ 1522

- Helispot
- Unimproved Landing Area
- ⌘ Division Break
- Drop Point
- Hot Spot - Spot Fire
- Other
- Fence - Cut/Damaged
- ◆ Mobile Weather Unit
- ▭ Wildfire Daily Fire Perimeter
- Water Tank
- ⌘ Completed Dozer Line
- Completed Hand Line
- Completed Road as Line
- Planned Road as Line
- Planned Secondary Line
- Access or Improved Road
- Other
- ▭ Temporary Flight Restriction
- ▭ Contained
- ▭ Uncontained
- ⚠ AML Hazards
- US/Canada Border
- ▭ County or Equivalent
- Local Road
- 4WD
- Trail
- ▭ BLM
- ▭ State
- Canadian Wildfire Layers**
- ▭ Canadian Wildfire Perimeter



N
W Team 7 GIS
8/6/2023 0824
Acres from IR/satellite
NAD 1983 2011













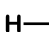












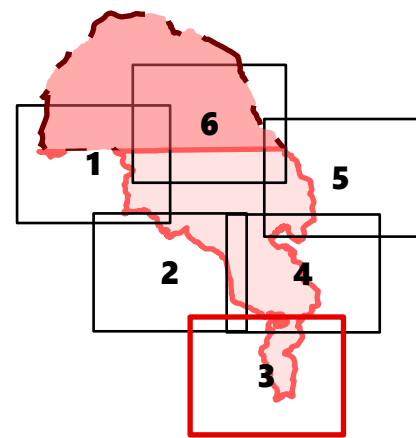
Esri, NASA, NGA, USGS, FEMA

IAP Map

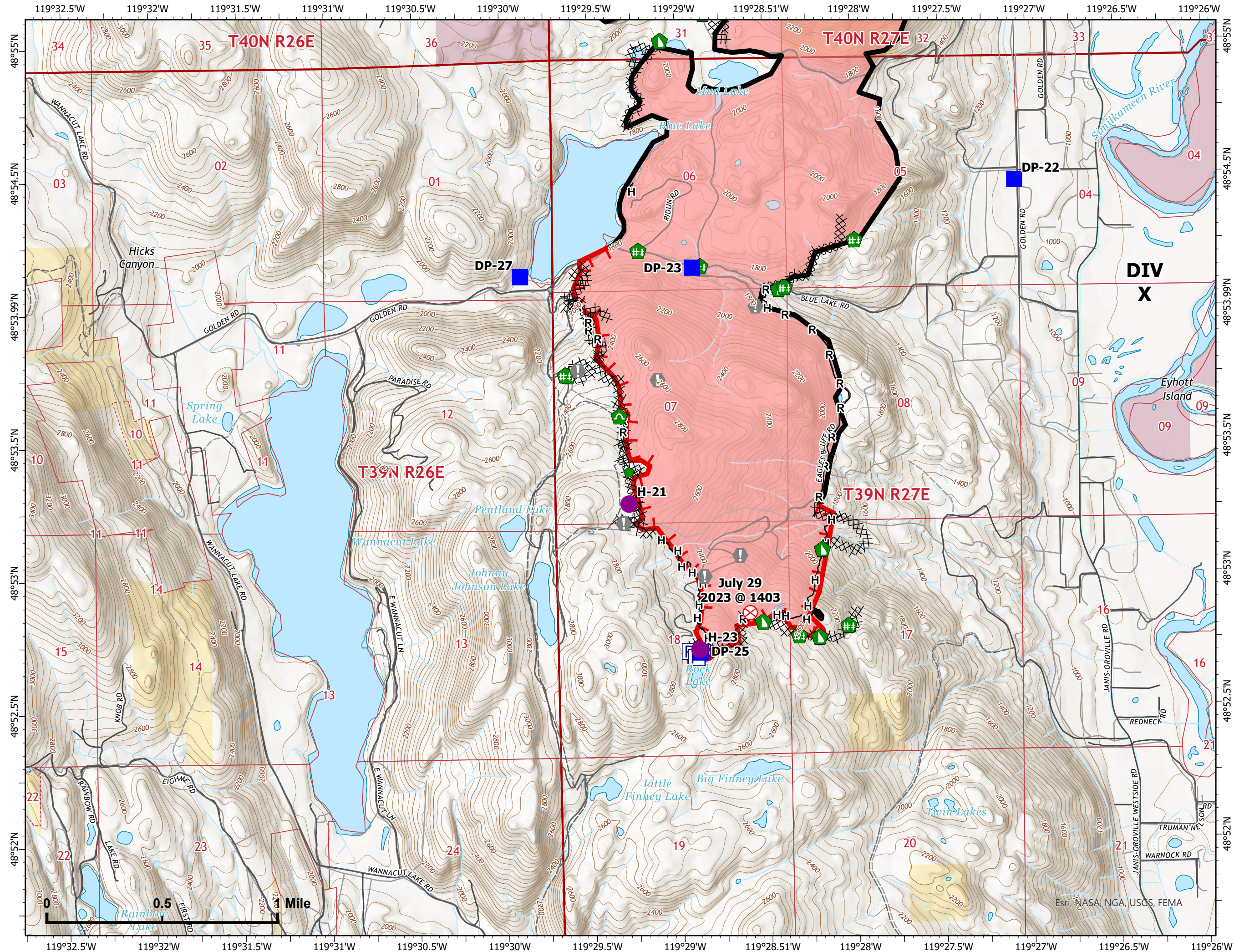
Eagle Bluff
WA-NES-001759
08/06/2023

16,428 acres as of 8/02/2023 @ 1522

-  Helispot
-  Drop Point
-  Fire Origin
-  Value at Risk
-  Repair Point
-  Fence - Cut/Damaged
-  Dozer Push
-  Culvert
-  Wildfire Daily Fire Perimeter
-  Pump
-  Water Tank
-  Completed Dozer Line
-  Completed Hand Line
-  Completed Road as Line
-  Contained
-  Uncontained
-  US/Canada Border
-  County or Equivalent
-  Local Road
-  4WD
-  BLM
-  State
- Canadian Wildfire Layers**
-  Canadian Wildfire Perimeter



NW Team 7 GIS
8/6/2023 0824
Acres from IR/satellite
NAD 1983 2011



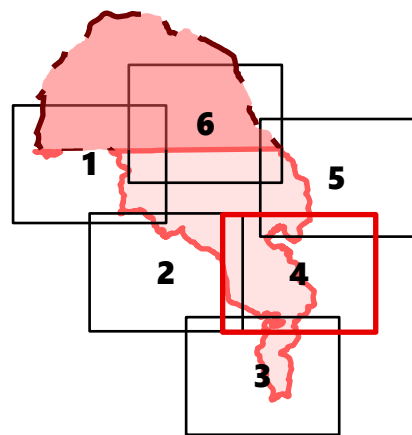
IAP Map

Eagle Bluff
WA-NES-001759

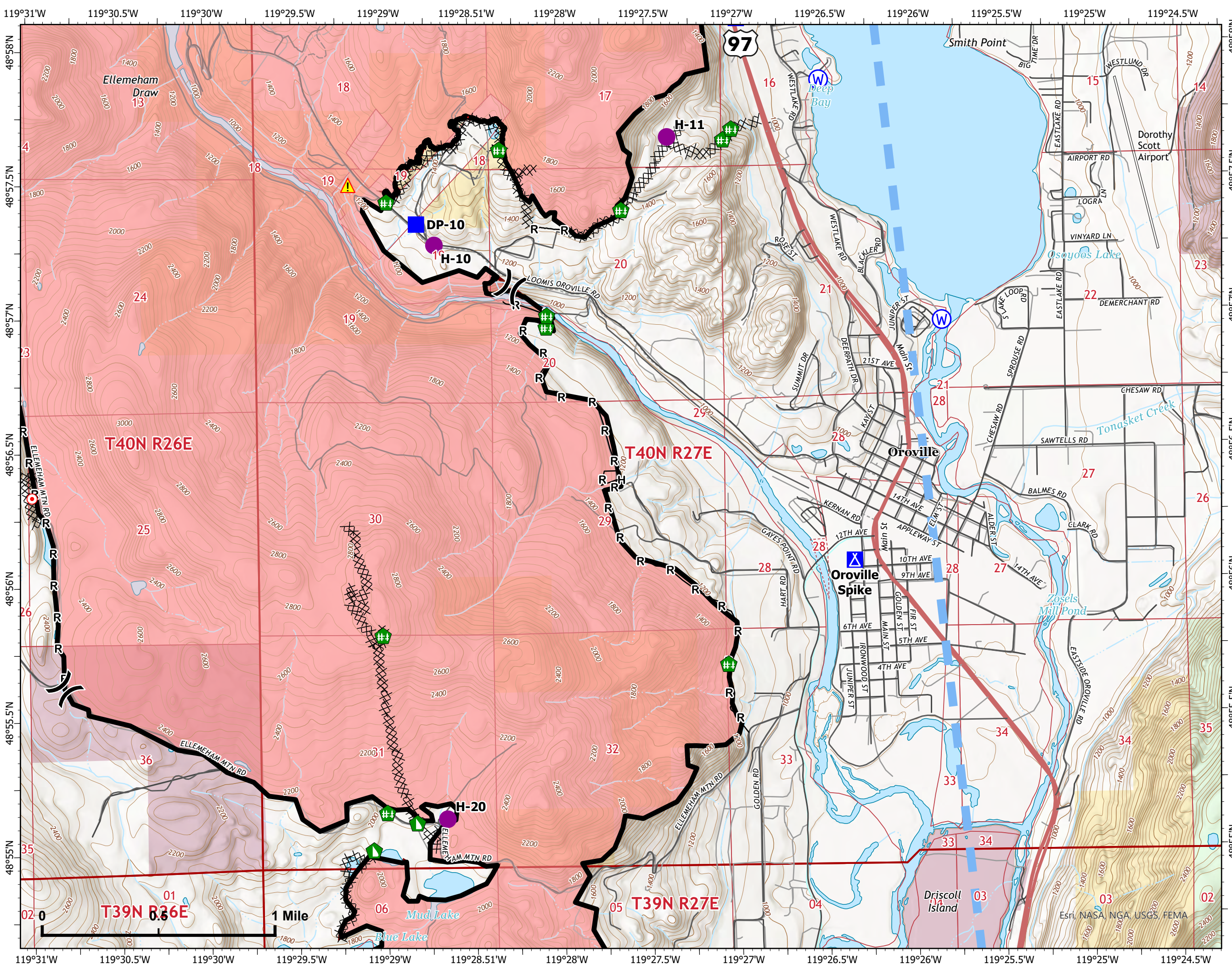
08/06/2023

16,428 acres as of 8/02/2023 @ 1522

- Helispot
- ⌋ Division Break
- Drop Point
- ⚓ Camp
- 🔥 Hot Spot - Spot Fire
- 🏠 Fence - Cut/Damaged
- 🚧 Dozer Push
- 🌊 Water Source
- 🔴 Wildfire Daily Fire Perimeter
- ⌘ Completed Dozer Line
- H Completed Hand Line
- R Completed Road as Line
- 🚫 Temporary Flight Restriction
- 🟦 Contained
- ⚠️ AML Hazards
- 🇺🇸 US/Canada Border
- 🏠 County or Equivalent
- 🛣️ Secondary Hwy
- 🛣️ Local Road
- 🛣️ 4WD
- 🛤️ Trail
- 🟡 BLM
- 🟤 State
- 🟢 Forest Service
- Canadian Wildfire Layers**
- 🔴 Canadian Wildfire Perimeter



NW Team 7 GIS
8/6/2023 0824
Acres from IR/satellite
NAD 1983 2011



Esri, NASA, NGA, USGS, FEMA

IAP Map

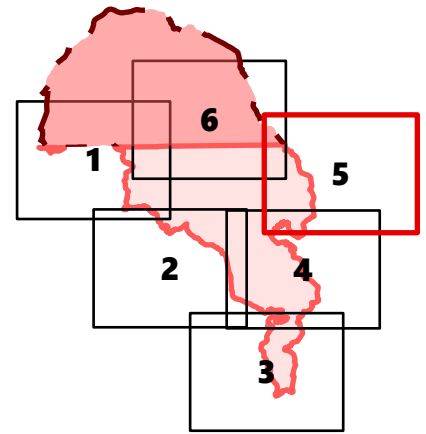
Eagle Bluff
WA-NES-001759
08/06/2023

16,428 acres as of 8/02/2023 @ 1522

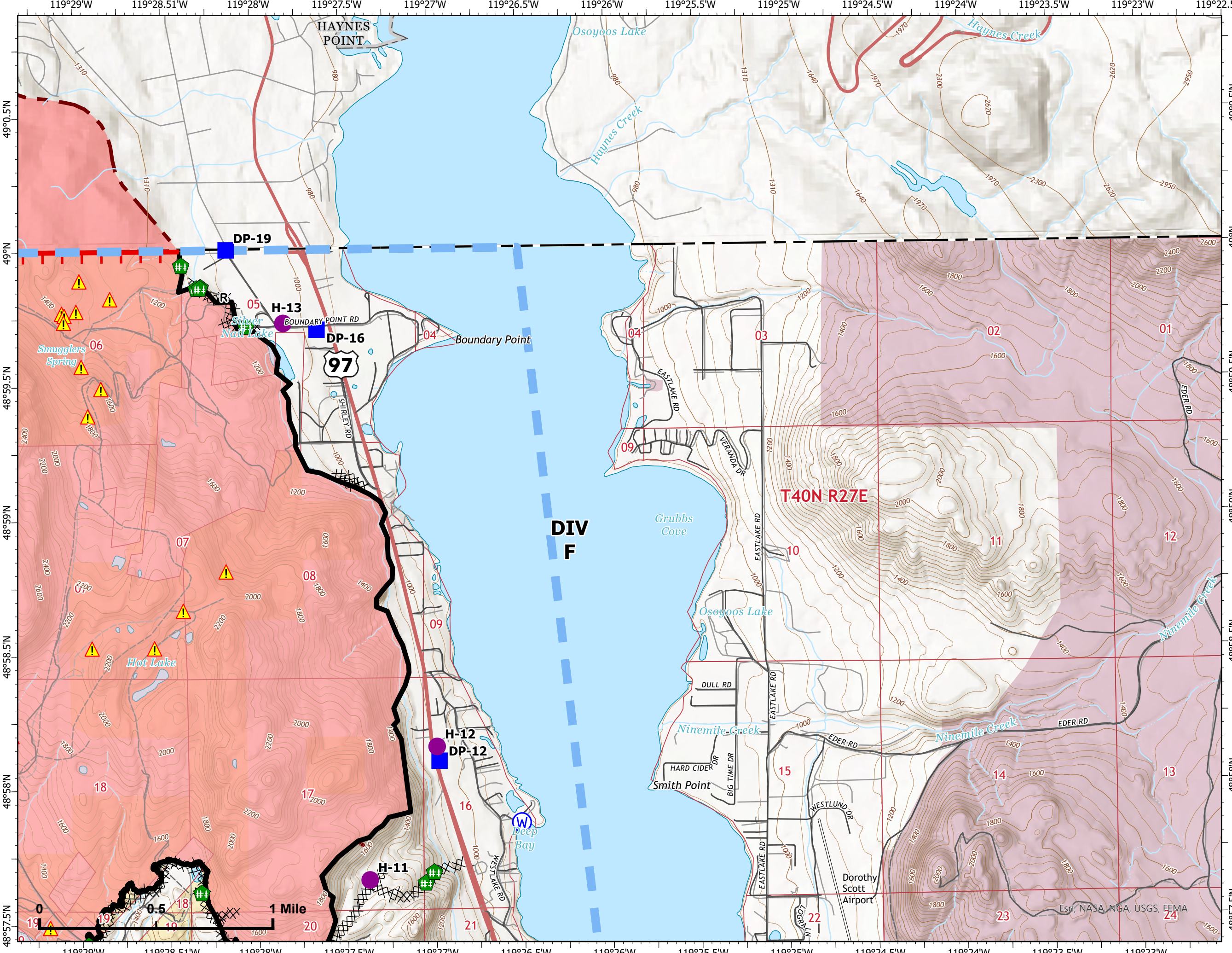
- Helispot
- Drop Point
- Fence - Cut/Damaged
- ⊕ Water Source
- ▭ Wildfire Daily Fire Perimeter
- ⊗⊗ Completed Dozer Line
- R— Completed Road as Line
- ▭ Temporary Flight Restriction
- ▬ Contained
- ▬ Uncontained
- ⚠ AML Hazards
- ▭ US/Canada Border
- ▭ County or Equivalent
- ▭ Parks (Canada)
- ▬ Secondary Hwy
- ▬ Local Road
- ▬ 4WD
- ▬ Trail
- ▭ BLM
- ▭ State
- ▭ Forest Service

Canadian Wildfire Layers

- ▬ Canadian Wildfire Perimeter



NW Team 7 GIS
8/6/2023 0824
Acres from IR/satellite
NAD 1983 2011



Esri, NASA, NGA, USGS, FEMA

IAP Map

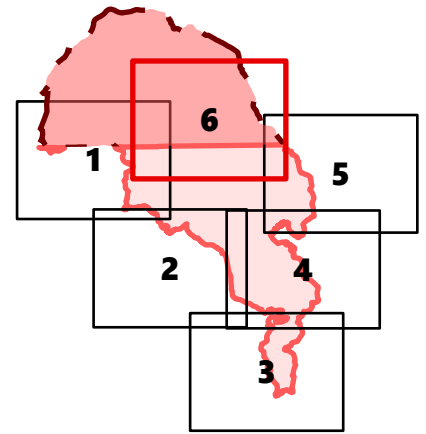
Eagle Bluff
WA-NES-001759
08/06/2023

16,428 acres as of 8/02/2023 @ 1522

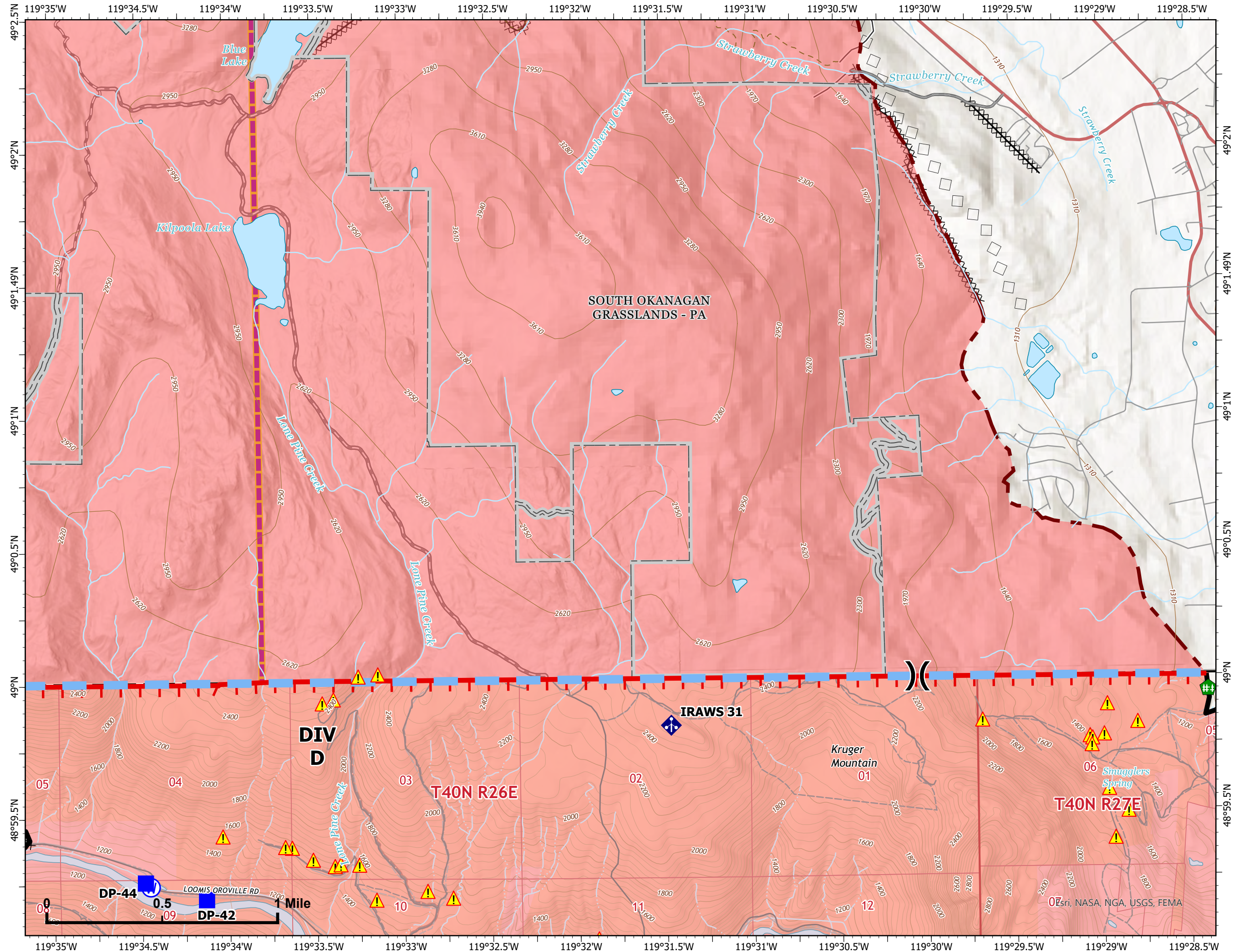
- () Division Break
- Drop Point
- ⊞ Fence - Cut/Damaged
- ⬢ Mobile Weather Unit
- Ⓜ Water Source
- ▭ Wildfire Daily Fire Perimeter
- ⊞ Completed Dozer Line
- ▭ Temporary Flight Restriction
- ▭ Contained
- ▭ Uncontained
- ⚠ AML Hazards
- ▭ US/Canada Border
- ▭ County or Equivalent
- ▭ Parks (Canada)
- ▭ Local Road
- ▭ 4WD
- ▭ Trail
- ▭ BLM
- ▭ State
- ▭ Forest Service

Canadian Wildfire Layers

- ▭ Canadian Wildfire Perimeter
- ▭ Trail
- ▭ Road - Modified Existing
- ▭ Road
- ▭ Division Break
- ⊞ Completed Machine Line
- ▭ Completed Handline
- ◇ Aerial Retardant Drop



NW Team 7 GIS
8/6/2023 0825
Acres from IR/satellite
NAD 1983 2011



Esri, NASA, NGA, USGS, FEMA