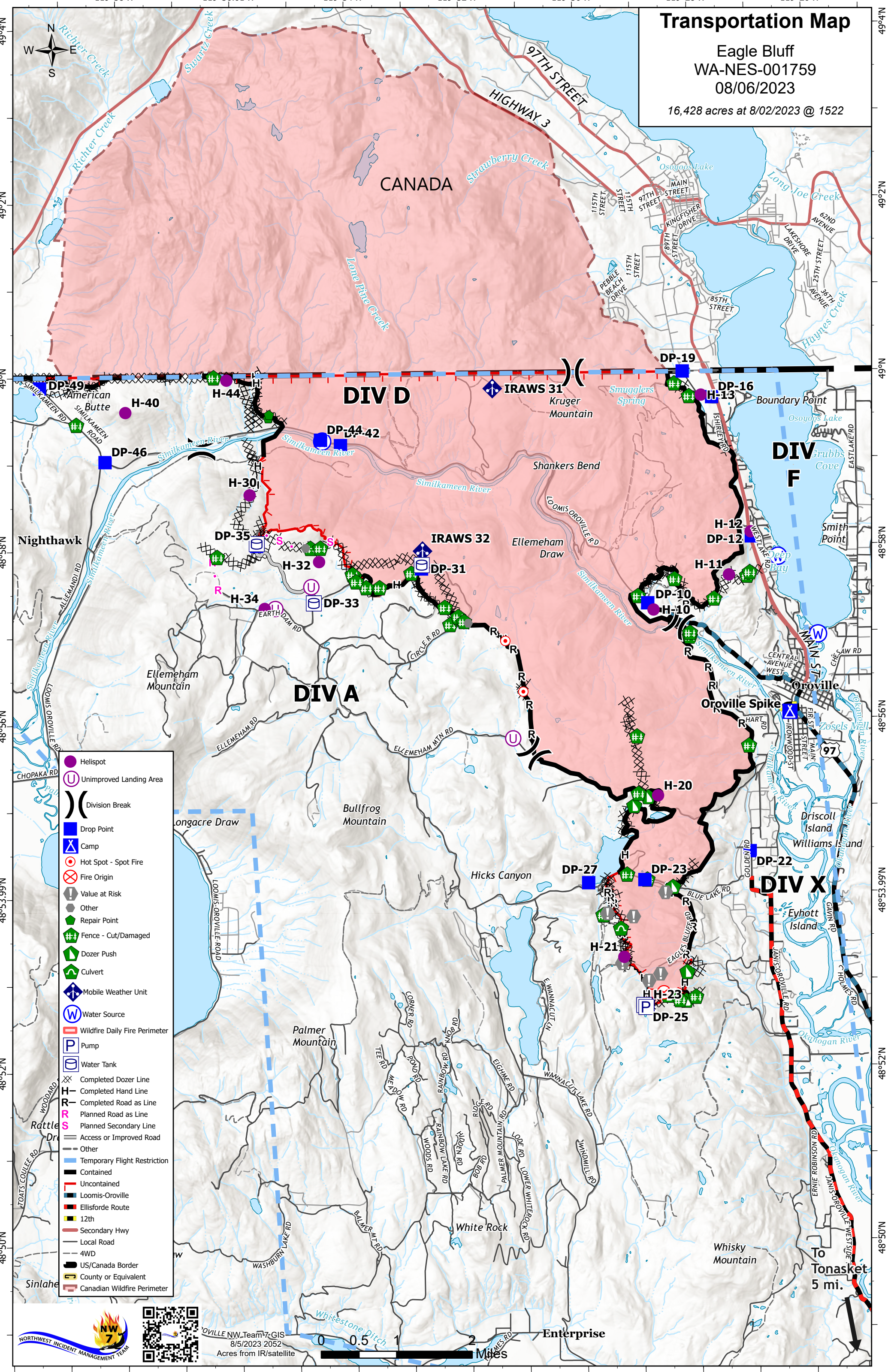


Transportation Map

Eagle Bluff
WA-NES-001759
08/06/2023

16,428 acres at 8/02/2023 @ 1522



- Helispot
- Unimproved Landing Area
- Division Break
- Drop Point
- Camp
- Hot Spot - Spot Fire
- Fire Origin
- Value at Risk
- Other
- Repair Point
- Fence - Cut/Damaged
- Dozer Push
- Culvert
- Mobile Weather Unit
- Water Source
- Wildfire Daily Fire Perimeter
- Pump
- Water Tank
- Completed Dozer Line
- Completed Hand Line
- Completed Road as Line
- Planned Road as Line
- Planned Secondary Line
- Access or Improved Road
- Other
- Temporary Flight Restriction
- Contained
- Uncontained
- Loomis-Oroville
- Ellisforde Route
- 12th
- Secondary Hwy
- Local Road
- 4WD
- US/Canada Border
- County or Equivalent
- Canadian Wildfire Perimeter

 NW Team 7 GIS
8/5/2023 2052
Acres from IR/satellite

0 0.5 1 Miles

Enterprise

To Tonasket 5 mi.