

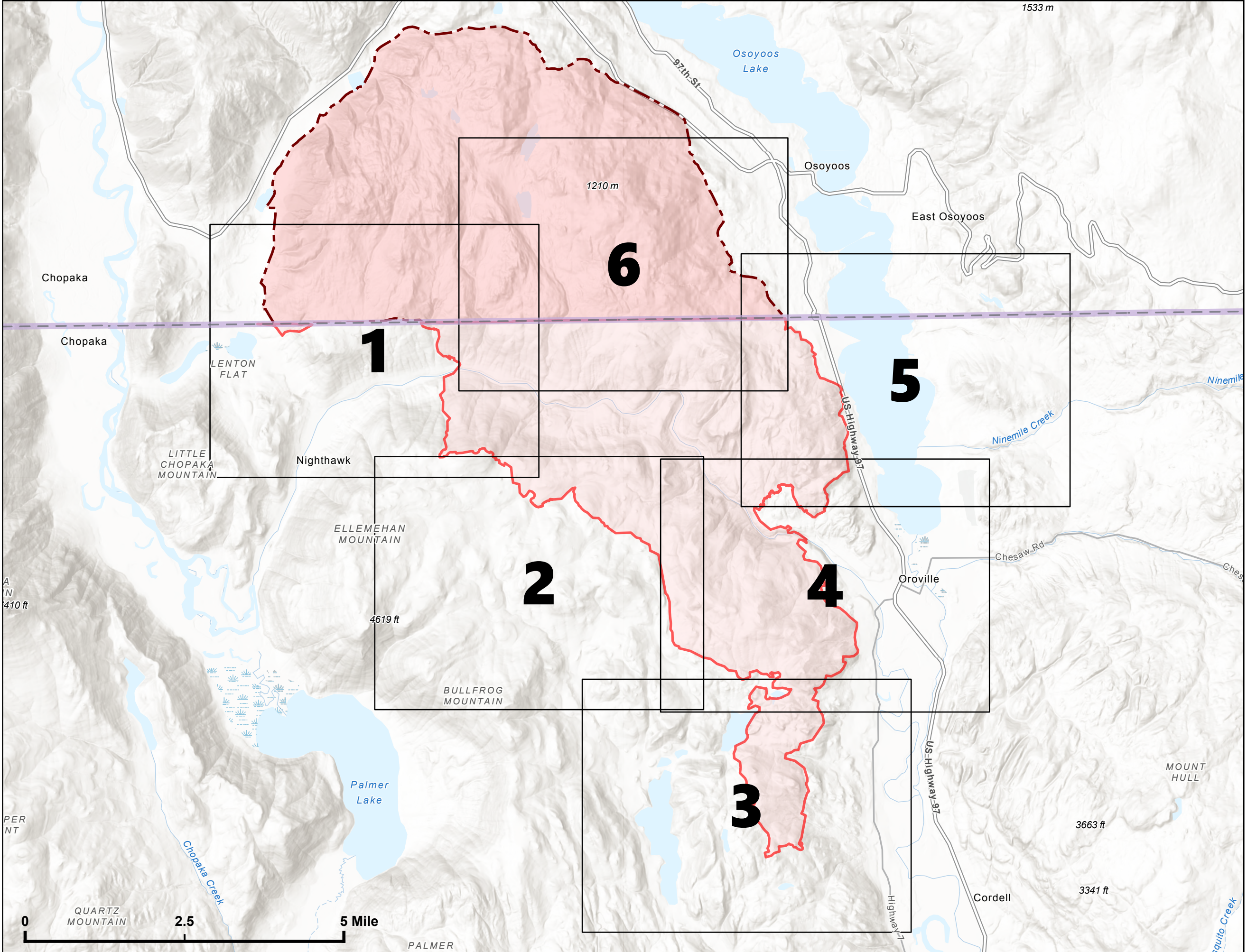


IAP Index Map

Eagle Bluff
WA-NES-001759
08/07/2023

16,428 acres as of 8/02/2023 @ 1522

-  Wildfire Daily Fire Perimeter
-  Canadian Wildfire Perimeter



NW Team 7 GIS
8/6/2023 2045
Acres from IR/satellite
NAD 1983 2011



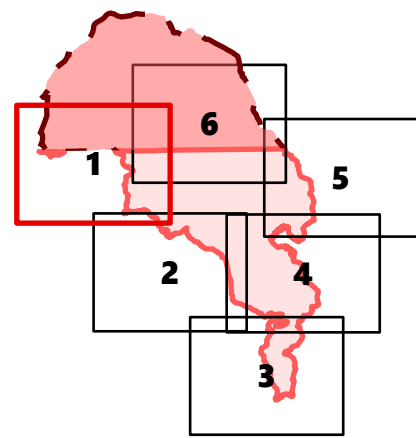
IAP Map

Eagle Bluff
WA-NES-001759
08/07/2023

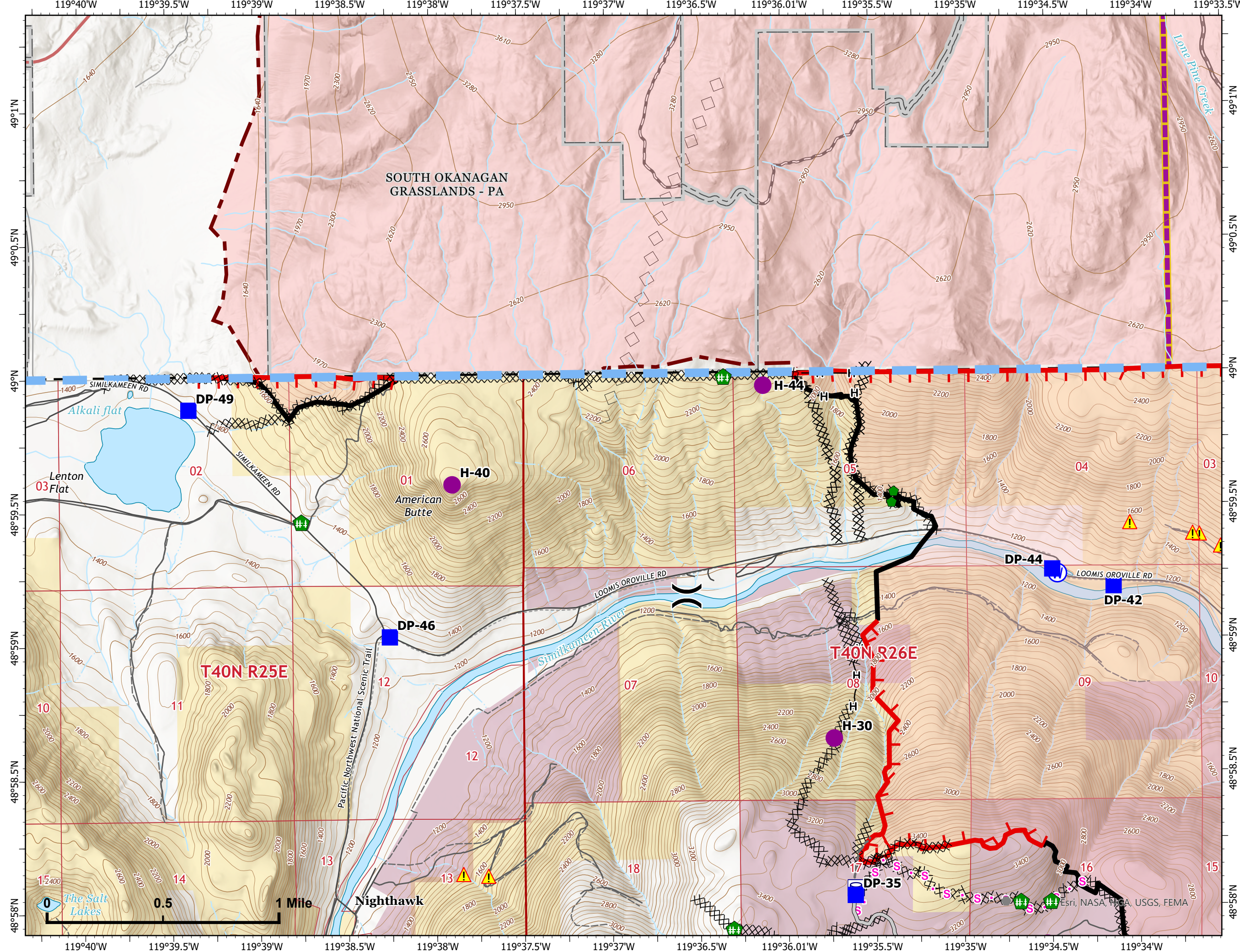
16,428 acres as of 8/02/2023 @ 1522

- Helispot
- () Division Break
- Drop Point
- Other
- Repair Point
- Fence - Cut/Damaged
- ⊕ Water Source
- ▭ Wildfire Daily Fire Perimeter
- ⊕ Water Tank
- ⊗ Completed Dozer Line
- H Completed Hand Line
- S Planned Secondary Line
- ▬ Access or Improved Road
- ▬ Other
- ▭ Temporary Flight Restriction
- ▭ Contained
- ▭ Uncontained
- ⚠ AML Hazards
- ▭ US/Canada Border
- ▭ County or Equivalent
- ▭ Parks (Canada)
- ▬ Local Road
- ▬ 4WD
- ▬ Trail
- ▭ BLM
- ▭ State
- ▭ Forest Service

- Canadian Wildfire Layers**
- ▭ Canadian Wildfire Perimeter
 - ▬ Road - Modified Existing
 - ▬ Road
 - ▭ Division Break
 - ◇ Aerial Retardant Drop



NW Team 7 GIS
8/6/2023 2045
Acres from IR/satellite
NAD 1983 2011



Esri, NASA, NOAA, USGS, FEMA

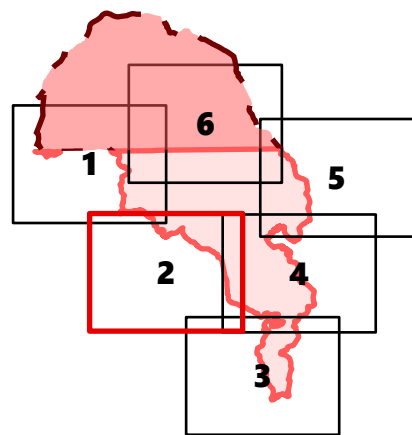
IAP Map

Eagle Bluff
WA-NES-001759

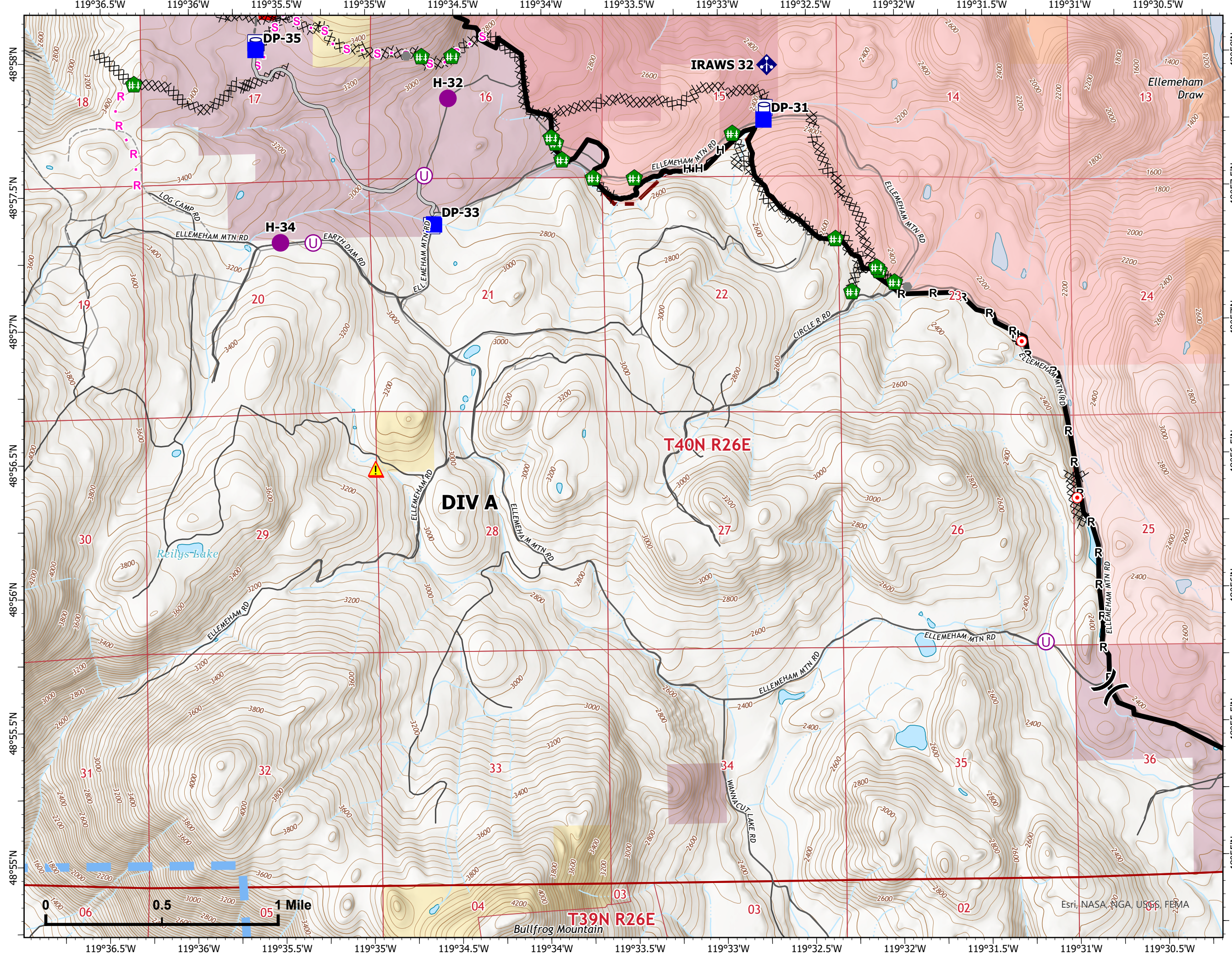
08/07/2023

16,428 acres as of 8/02/2023 @ 1522

- Helispot
- Unimproved Landing Area
- ⌘ Division Break
- Drop Point
- Hot Spot - Spot Fire
- Other
- Fence - Cut/Damaged
- ◆ Mobile Weather Unit
- Wildfire Daily Fire Perimeter
- Water Tank
- ⌘ Completed Dozer Line
- Completed Hand Line
- Completed Road as Line
- Planned Road as Line
- Planned Secondary Line
- Access or Improved Road
- Other
- Temporary Flight Restriction
- Contained
- Uncontained
- ▲ AML Hazards
- ⌘ US/Canada Border
- County or Equivalent
- Local Road
- 4WD
- Trail
- BLM
- State



NW Team 7 GIS
8/6/2023 2046
Acres from IR/satellite
NAD 1983 2011



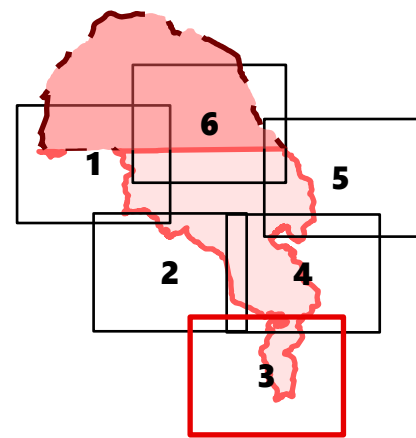
Esri, NASA, NGA, USGS, FEMA

IAP Map

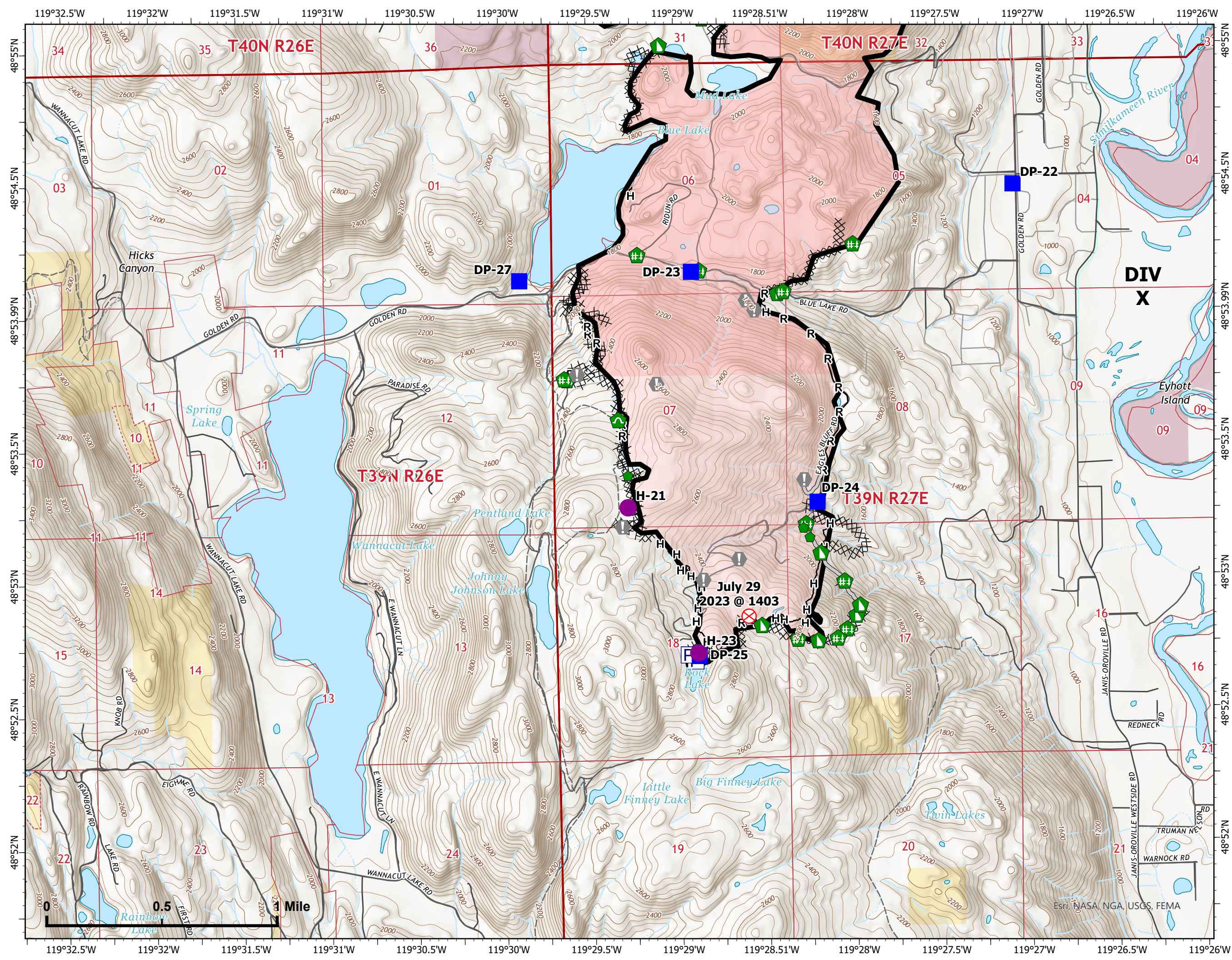
Eagle Bluff
WA-NES-001759
08/07/2023

16,428 acres as of 8/02/2023 @ 1522

- Helispot
- Drop Point
- ⊗ Fire Origin
- ⚠ Value at Risk
- 🛠 Repair Point
- 🚧 Fence - Cut/Damaged
- 🚧 Dozer Push
- 🚧 Culvert
- 🔴 Wildfire Daily Fire Perimeter
- 📦 Pump
- 🛢 Water Tank
- ⚡ Completed Dozer Line
- H Completed Hand Line
- M Completed Mixed Construction Line
- R Completed Road as Line
- Access or Improved Road
- ▬ Contained
- US/Canada Border
- 📦 County or Equivalent
- Local Road
- - - 4WD
- 🟡 BLM
- 🟠 State



NW Team 7 GIS
8/6/2023 2046
Acres from IR/satellite
NAD 1983 2011



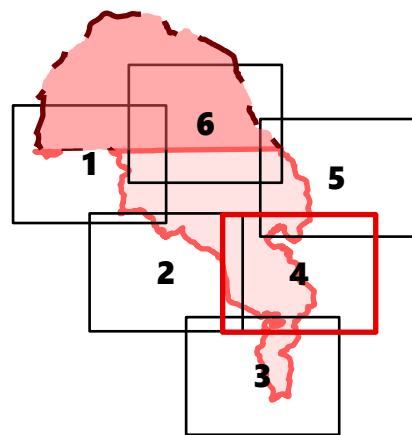
IAP Map

Eagle Bluff
WA-NES-001759

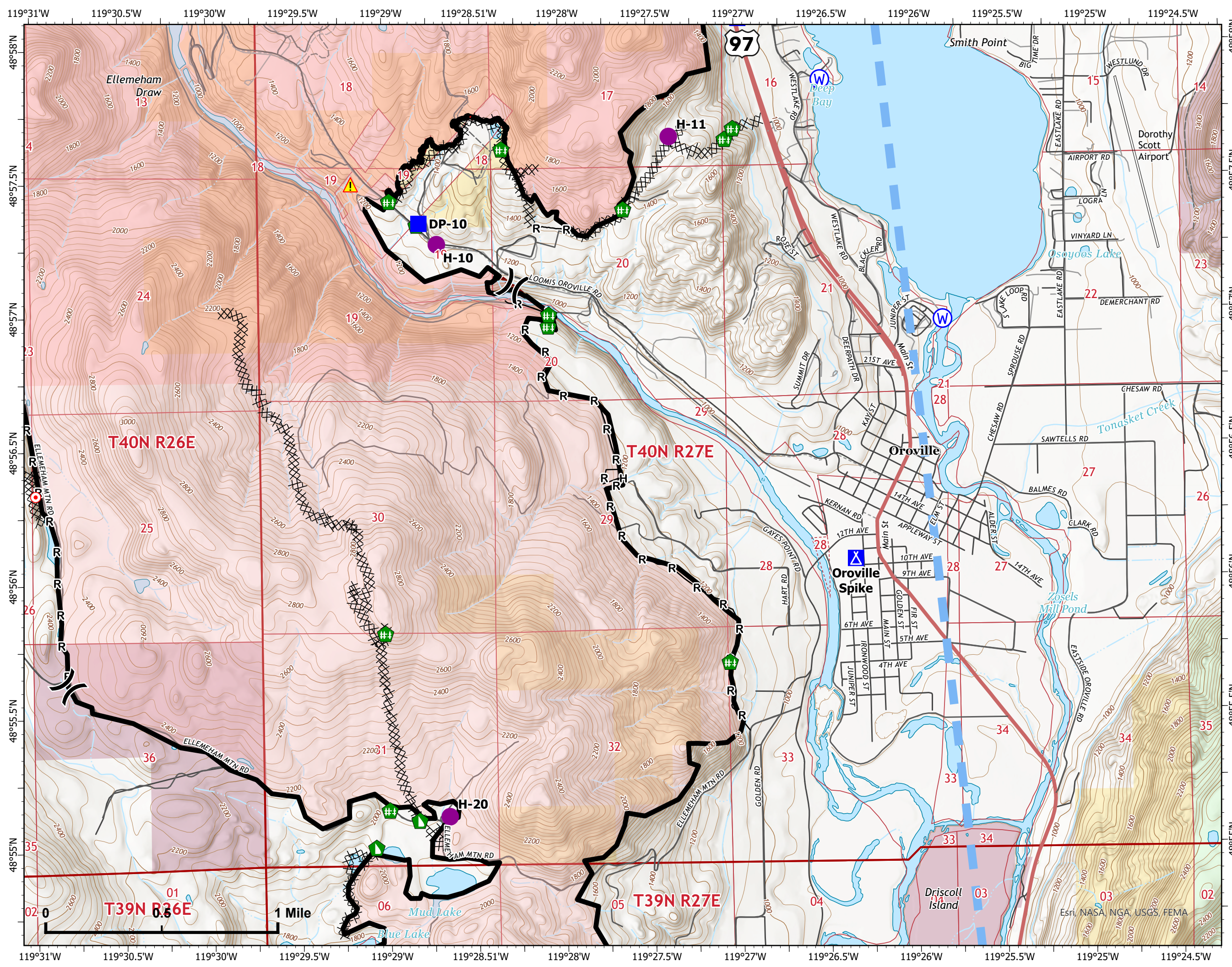
08/07/2023

16,428 acres as of 8/02/2023 @ 1522

- Helispot
- ⌘ Division Break
- Drop Point
- ⚓ Camp
- 🔥 Hot Spot - Spot Fire
- 🚧 Fence - Cut/Damaged
- 🚧 Dozer Push
- Ⓜ Water Source
- 🔴 Wildfire Daily Fire Perimeter
- ⌘ Completed Dozer Line
- Completed Hand Line
- Completed Road as Line
- 🔵 Temporary Flight Restriction
- Contained
- ⚠️ AML Hazards
- US/Canada Border
- 📏 County or Equivalent
- 🛣️ Secondary Hwy
- Local Road
- 4WD
- Trail
- 🟡 BLM
- 🟤 State
- 🟢 Forest Service



NW Team 7 GIS
8/6/2023 2046
Acres from IR/satellite
NAD 1983 2011



Esri, NASA, NGA, USGS, FEMA

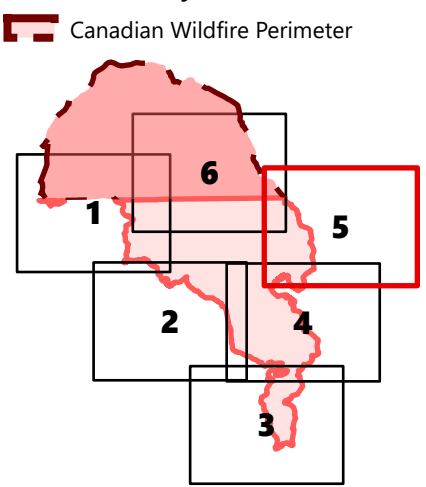
IAP Map

Eagle Bluff
WA-NES-001759
08/07/2023

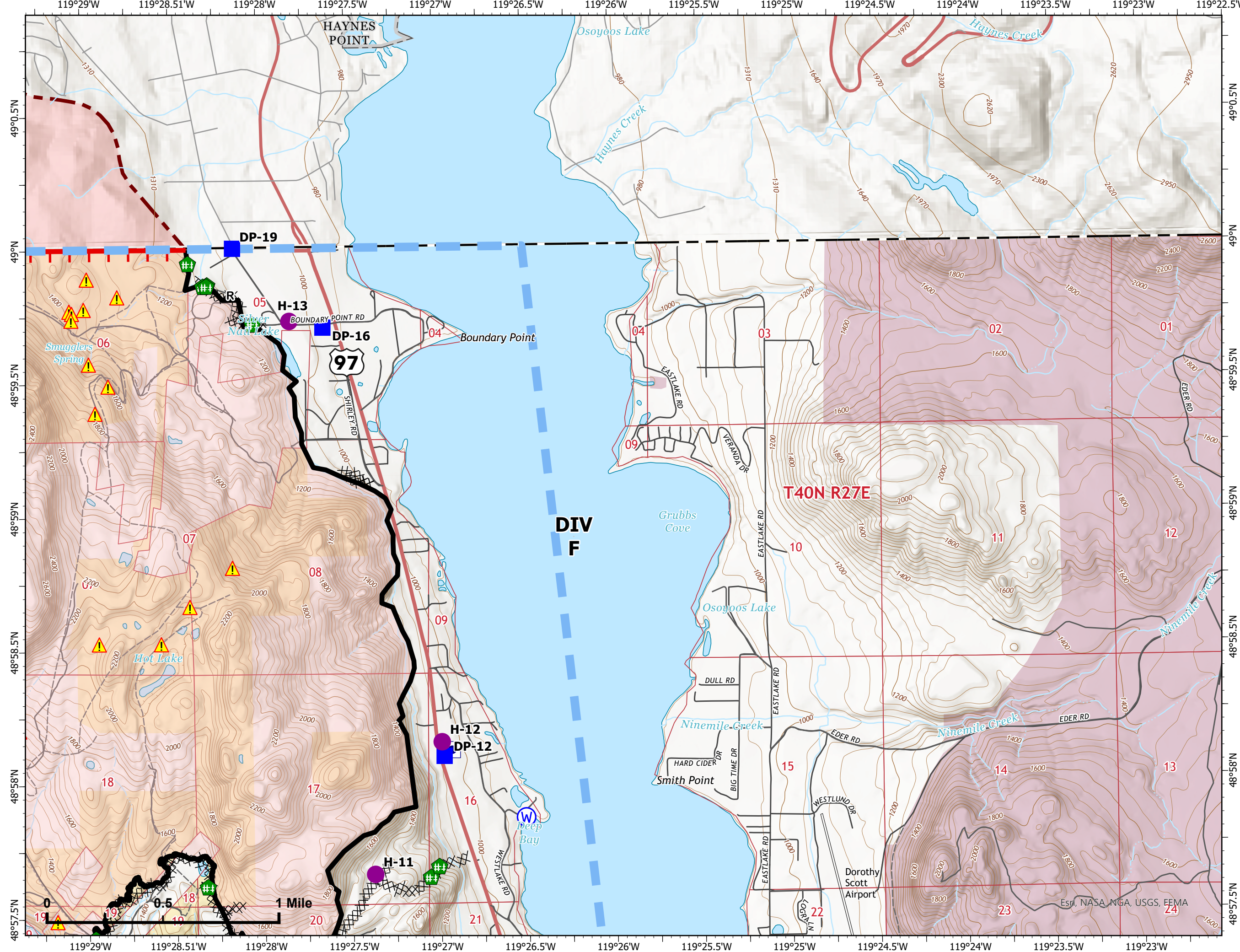
16,428 acres as of 8/02/2023 @ 1522

- Helispot
- Drop Point
- ⊕ Fence - Cut/Damaged
- ⊕ Water Source
- ▭ Wildfire Daily Fire Perimeter
- Other Property
- XX XX Completed Dozer Line
- R— Completed Road as Line
- ▭ Temporary Flight Restriction
- ▭ Contained
- ▭ Uncontained
- ⚠ AML Hazards
- ▭ US/Canada Border
- ▭ County or Equivalent
- ▭ Parks (Canada)
- ▭ Secondary Hwy
- ▭ Local Road
- ▭ 4WD
- ▭ Trail
- ▭ BLM
- ▭ State
- ▭ Forest Service

Canadian Wildfire Layers



NW Team 7 GIS
8/6/2023 2047
Acres from IR/satellite
NAD 1983 2011



Esri, NASA, NGA, USGS, FEMA

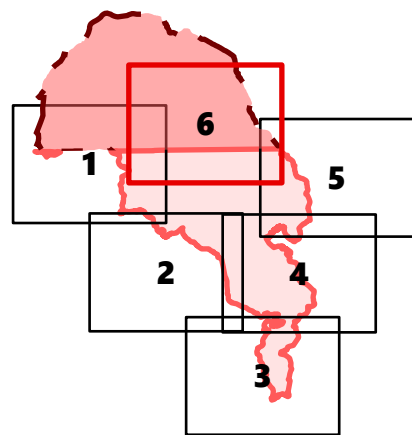
IAP Map

Eagle Bluff
WA-NES-001759
08/07/2023

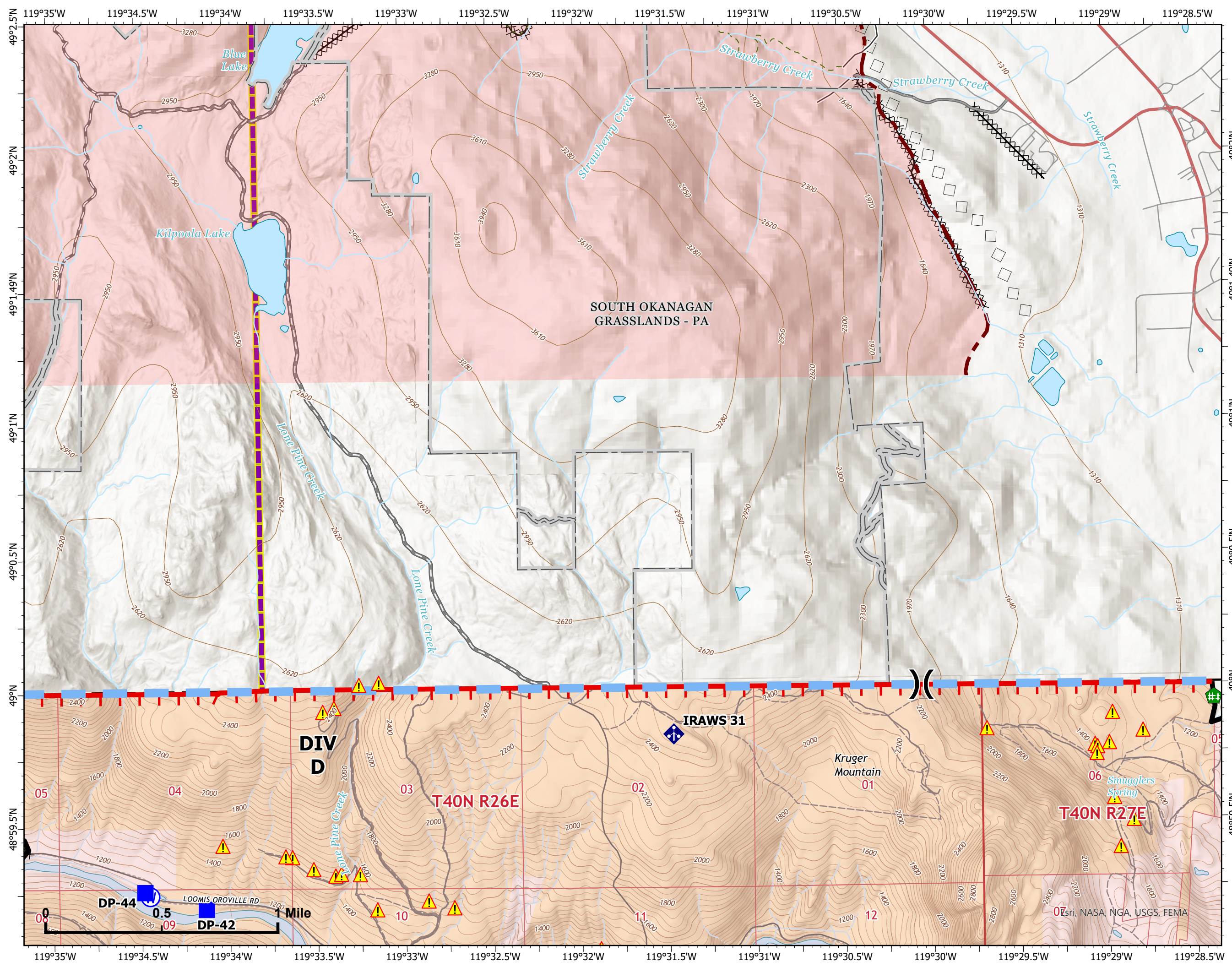
16,428 acres as of 8/02/2023 @ 1522

-)(Division Break
- Drop Point
- 🏠 Fence - Cut/Damaged
- 📶 Mobile Weather Unit
- 🌊 Water Source
- 🔴 Wildfire Daily Fire Perimeter
- ⊗ Completed Dozer Line
- 🔵 Temporary Flight Restriction
- ▬ Contained
- 🔴 Uncontained
- ⚠️ AML Hazards
- 🇺🇸 US/Canada Border
- 🏠 County or Equivalent
- 🇨🇦 Parks (Canada)
- 🛣️ Local Road
- 🛤️ 4WD
- 🛤️ Trail
- 🟡 BLM
- 🟤 State
- 🟢 Forest Service

- ### Canadian Wildfire Layers
- 🔴 Canadian Wildfire Perimeter
 - 🛤️ Trail
 - 🛣️ Road - Modified Existing
 - 🛣️ Road
 - 🟡 Division Break
 - ⊗ Completed Machine Line
 - ▬ Completed Handline
 - ◇ Aerial Retardant Drop



NW Team 7 GIS
8/6/2023 2047
Acres from IR/satellite
NAD 1983 2011



DP-44 0.5 DP-42
LOOMIS OROVILLE RD
1 Mile

Esri, NASA, NGA, USGS, FEMA