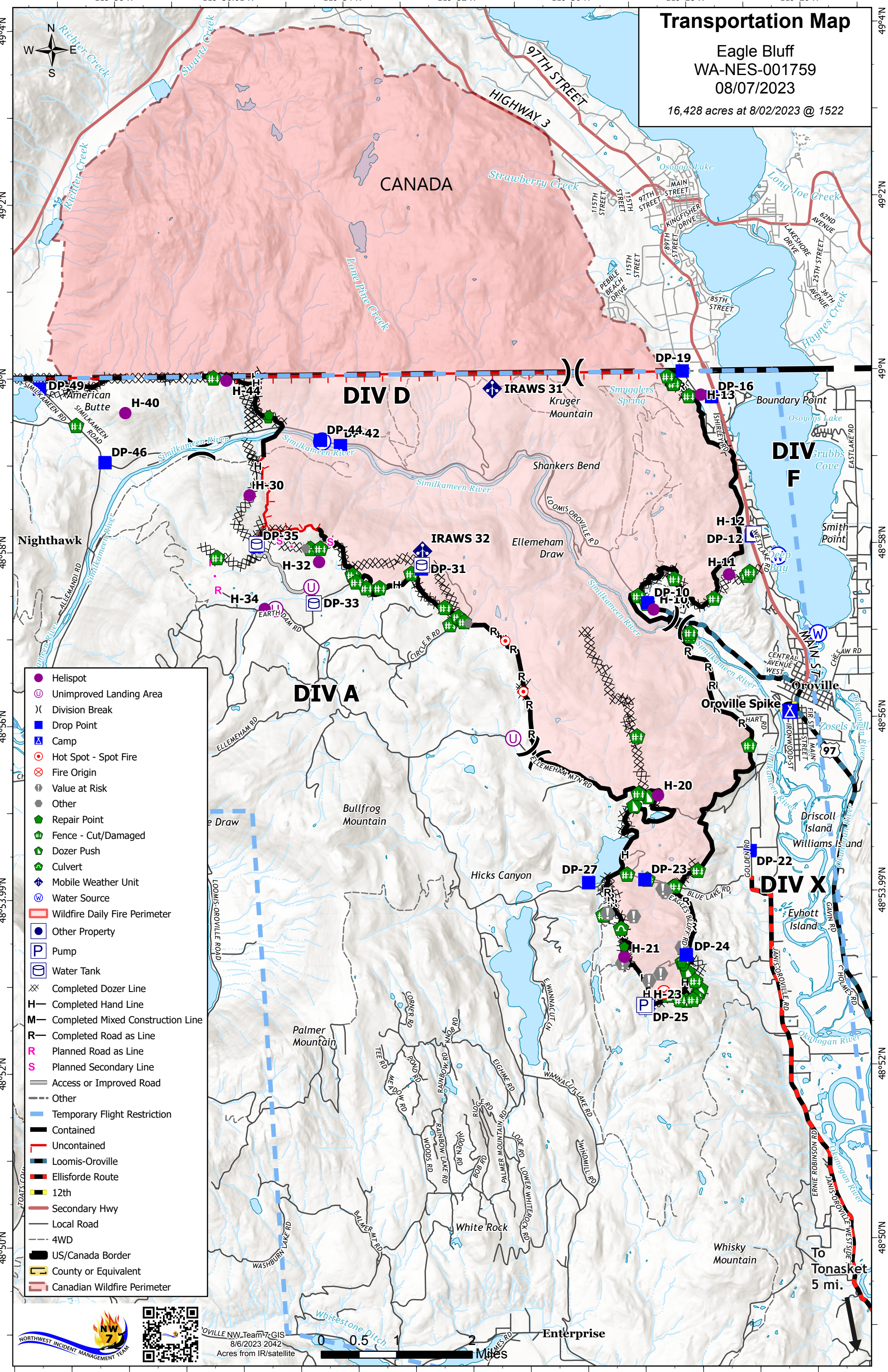


Transportation Map

Eagle Bluff
WA-NES-001759
08/07/2023

16,428 acres at 8/02/2023 @ 1522



- Helispot
- Unimproved Landing Area
- ⌋ Division Break
- Drop Point
- ▲ Camp
- Hot Spot - Spot Fire
- ⊗ Fire Origin
- ⊙ Value at Risk
- Other
- Repair Point
- ⊕ Fence - Cut/Damaged
- ⊕ Dozer Push
- ⊕ Culvert
- ◆ Mobile Weather Unit
- ⊙ Water Source
- ▭ Wildfire Daily Fire Perimeter
- Other Property
- ⊙ Pump
- ⊙ Water Tank
- ⊗ Completed Dozer Line
- H Completed Hand Line
- M Completed Mixed Construction Line
- R Completed Road as Line
- R Planned Road as Line
- S Planned Secondary Line
- Access or Improved Road
- Other
- ▭ Temporary Flight Restriction
- ▭ Contained
- ▭ Uncontained
- ▭ Loomis-Oroville
- ▭ Ellisforde Route
- ▭ 12th
- ▭ Secondary Hwy
- ▭ Local Road
- ▭ 4WD
- ▭ US/Canada Border
- ▭ County or Equivalent
- ▭ Canadian Wildfire Perimeter

 NW Team 7 GIS
8/6/2023 2042
Acres from IR/satellite



To Tonasket
5 mi.