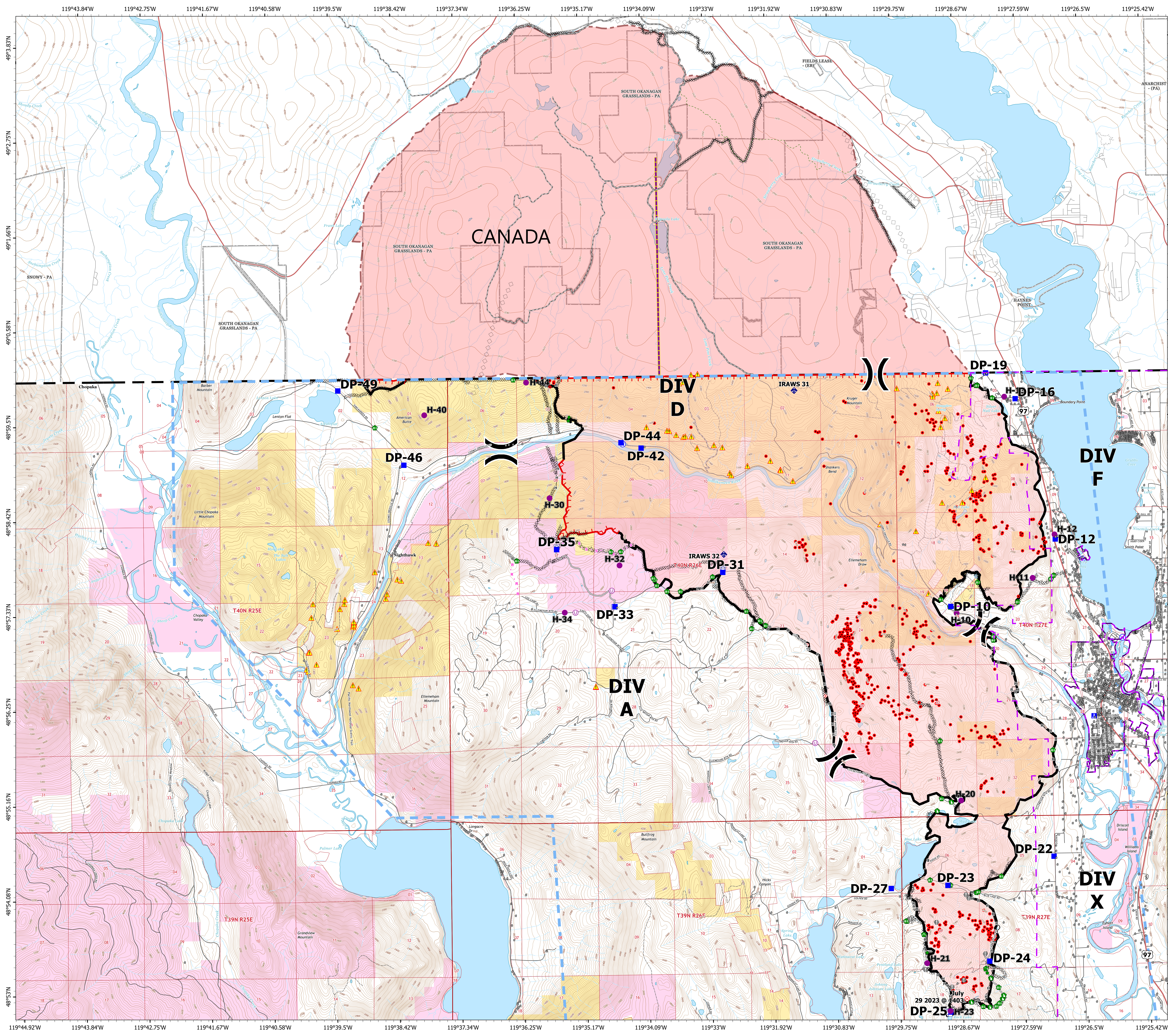


OPS Map

Eagle Bluff
WA-NES-001759
08/07/2023

16,428 acres as of 8/02/2023 @ 1522

- Helispot
- Unimproved Landing Area
-) Division Break
- Drop Point
- ▲ Camp
- Hot Spot - Spot Fire
- ⊗ Fire Origin
- ⚠ Value at Risk
- Other
- Repair Point
- ⚡ Fence - Cut/Damaged
- ➡ Dozer Push
- ⚡ Culvert
- ⚡ Mobile Weather Unit
- Ⓜ Water Source
- ▭ Wildfire Daily Fire Perimeter
- Ⓜ Address Points
- ▲ AML Hazards
- Ⓜ Other Property
- Ⓜ Pump
- Ⓜ Water Tank
- IR Isolated Heat Source
- Ⓜ Completed Dozer Line
- Completed Hand Line
- Completed Mixed Construction Line
- Completed Road as Line
- Planned Road as Line
- Planned Secondary Line
- Access or Improved Road
- Other
- Temporary Flight Restriction
- ▭ Contained
- ▭ Uncontained
- US/Canada Border
- ▭ County
- ▭ State
- ▭ Forest Service
- ▭ BLM
- ▭ Parks (Canada)
- Secondary Hwy
- Local Road
- 4WD
- Trail
- ▭ OKANOGAN COUNTY F.P.D. 1
- ▭ OROVILLE
- Canadian Wildfire Layers**
- Trail
- Road - Modified Existing
- Road
- Division Break
- Completed Machine Line
- Completed Handline
- ◇ Aerial Retardant Drop
- ▭ Canadian Wildfire Perimeter



0 0.5 1 2 Miles

NW Team 7 GIS
8/7/2023 0704
Acres from IR/satellite
NAD 1983 2011