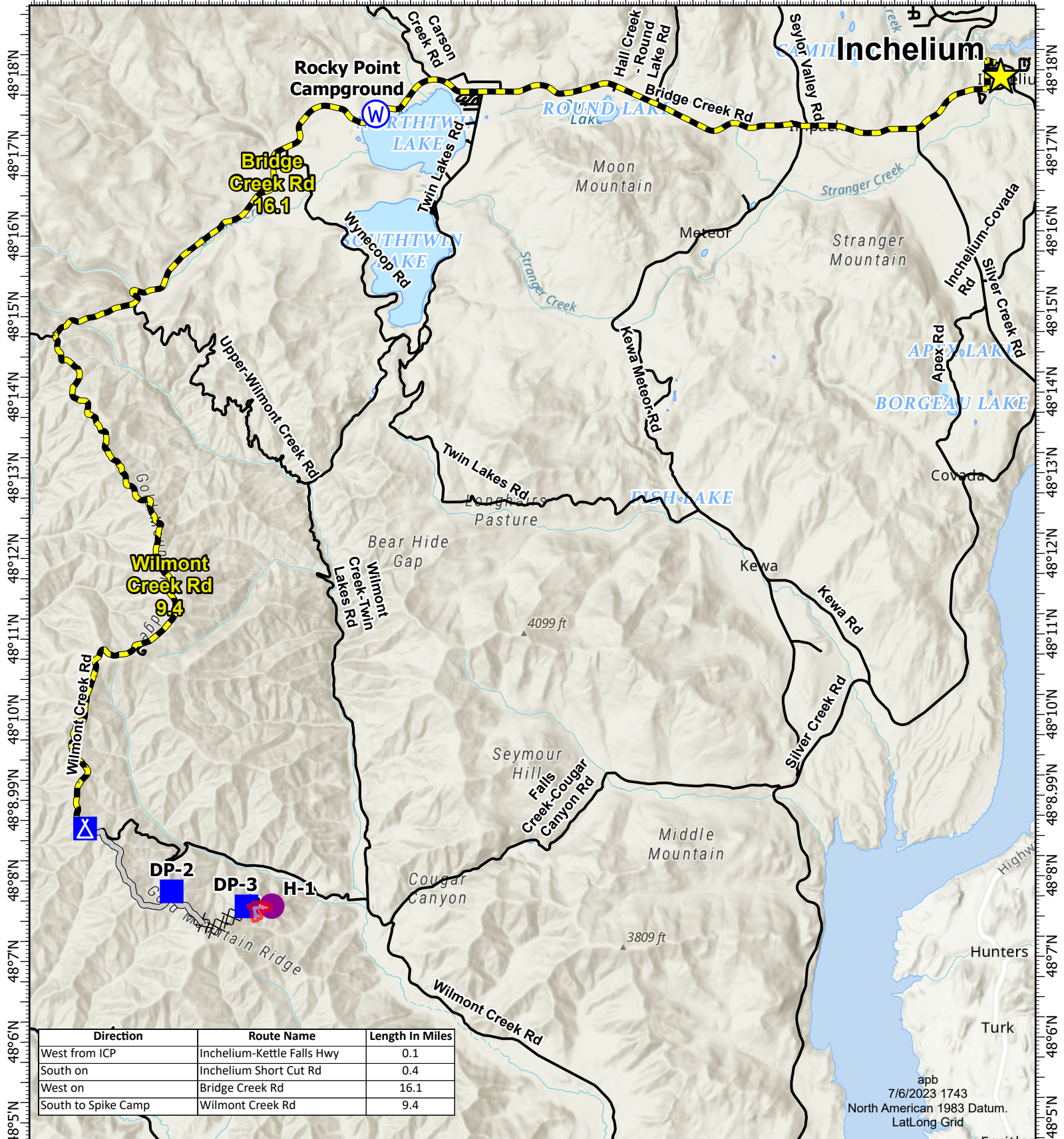


118°30'W 118°28.51'W 118°27'W 118°25.5'W 118°24'W 118°22.5'W 118°21.01'W 118°19.5'W 118°18'W 118°16.5'W 118°15'W 118°13.51'W 118°12'W



Direction	Route Name	Length In Miles
West from ICP	Incheilium-Kettle Falls Hwy	0.1
South on	Incheilium Short Cut Rd	0.4
West on	Bridge Creek Rd	16.1
South to Spike Camp	Wilmont Creek Rd	9.4

apb  
7/6/2023 1743  
North American 1983 Datum.  
Lat/Long Grid

# Transportation

Gold Mountain Ridge  
WACO 230087  
July 7, 2023 24hr  
28.78 acres at July 5 @ 1718

- Cities
- Travel Route (Lime Green Flagging)
- Primary Road
- Waterbody
- Helispot
- Drop Point
- Camp
- Water Source
- Completed Dozer Line
- Completed Hand Line
- Access or Improved Road
- Wildfire Daily Fire Perimeter

0 0.5 1 2

Miles