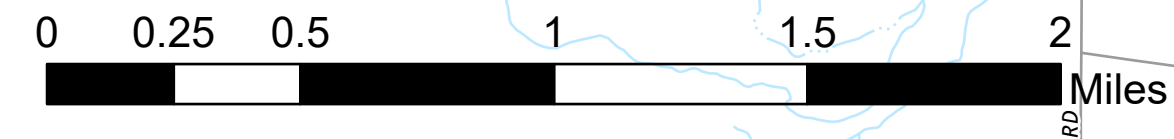


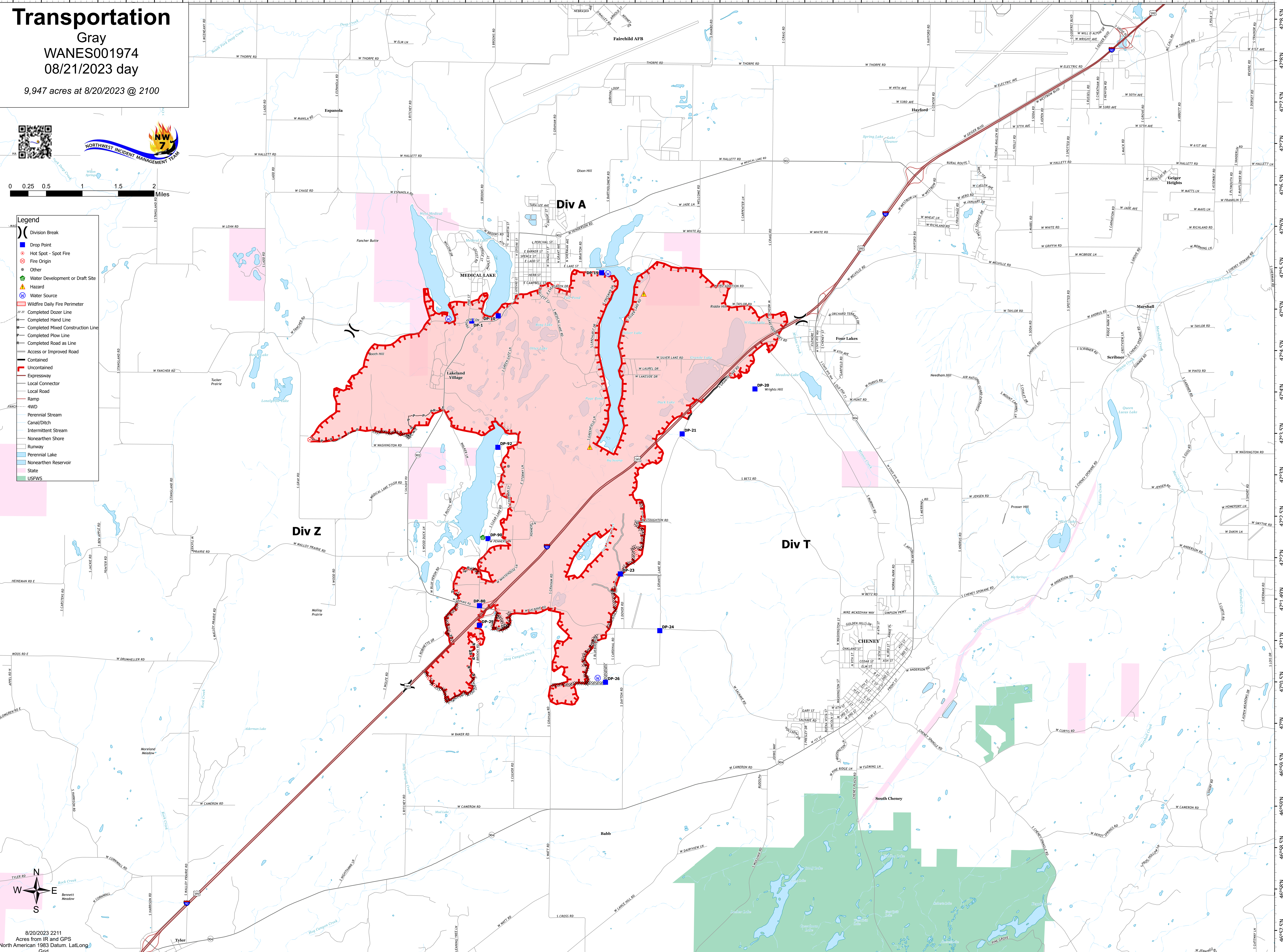
Transportation

Gray
WANES001974
08/21/2023 day

9,947 acres at 8/20/2023 @ 2100



- Legend**
- Division Break
 - Drop Point
 - Hot Spot - Spot Fire
 - Fire Origin
 - Water Development or Draft Site
 - Hazard
 - Water Source
 - Wildfire Daily Fire Perimeter
 - Completed Dozer Line
 - Completed Hand Line
 - Completed Mixed Construction Line
 - Completed Plow Line
 - Completed Road as Line
 - Access or Improved Road
 - Expressway
 - Local Connector
 - Local Road
 - Ramp
 - 4WD
 - Perennial Stream
 - Canal/Ditch
 - Intermittent Stream
 - Nonearthren Shore
 - Rumway
 - Perennial Lake
 - Nonearthren Reservoir
 - State
 - USFWS



8/20/2023 2211
Acres from IR and GPM
North American 1983 Datum. Lat/Long
Grid