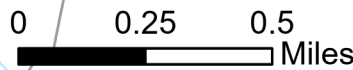


Transportation

Gray
WANES001974
08/23/2023 day

10,016 acres at 8/21/2023 @ 1113

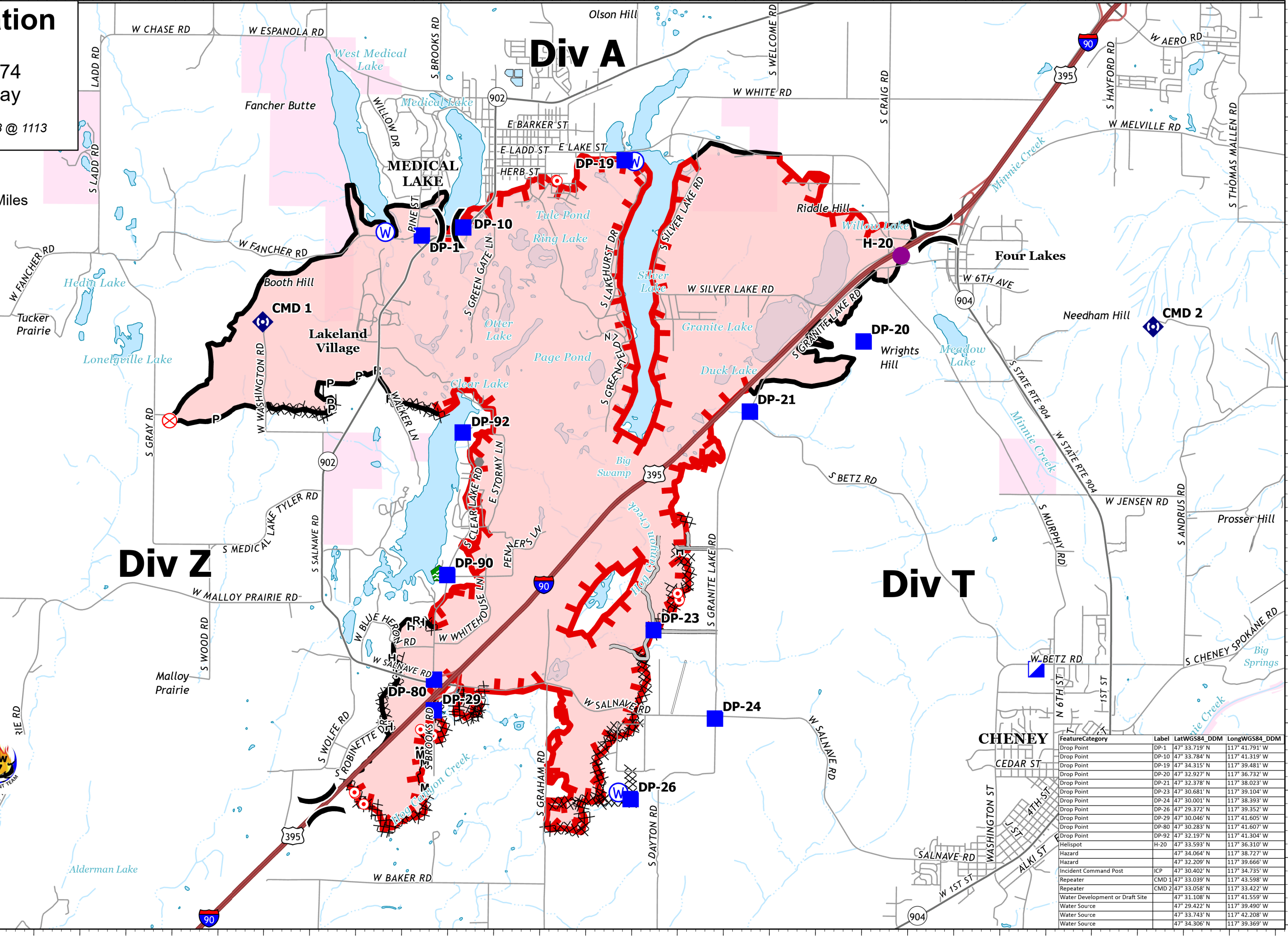


Legend

- Helispot
- Division Break
- Incident Command Post
- Drop Point
- Hot Spot - Spot Fire
- Fire Origin
- Other
- Water Development or Draft Site
- Repeater
- Water Source
- Wildfire Daily Fire Perimeter
- Completed Dozer Line
- Completed Hand Line
- Completed Mixed Construction Line
- Completed Plow Line
- Completed Road as Line
- Access or Improved Road
- Contained
- Uncontained
- Expressway
- Local Connector
- Local Road
- Ramp
- Runway
- Perennial Stream
- Intermittent Stream
- Perennial Lake
- Nonearthen Reservoir
- State
- USFWS



8/22/2023 2029
Acres from IR and GPS
North American 1983 Datum.



FeatureCategory	Label	LatWGS84_DDM	LongWGS84_DDM
Drop Point	DP-1	47° 33.719' N	117° 41.791' W
Drop Point	DP-10	47° 33.784' N	117° 41.319' W
Drop Point	DP-19	47° 34.315' N	117° 39.481' W
Drop Point	DP-20	47° 32.927' N	117° 36.732' W
Drop Point	DP-21	47° 32.378' N	117° 38.023' W
Drop Point	DP-23	47° 30.681' N	117° 39.104' W
Drop Point	DP-24	47° 30.001' N	117° 38.393' W
Drop Point	DP-26	47° 29.372' N	117° 39.352' W
Drop Point	DP-29	47° 30.046' N	117° 41.605' W
Drop Point	DP-80	47° 30.283' N	117° 41.607' W
Drop Point	DP-92	47° 32.197' N	117° 41.304' W
Helispot	H-20	47° 33.593' N	117° 36.310' W
Hazard		47° 34.064' N	117° 38.727' W
Hazard		47° 32.209' N	117° 39.666' W
Incident Command Post	ICP	47° 30.402' N	117° 34.735' W
Repeater	CMD 1	47° 33.039' N	117° 43.598' W
Repeater	CMD 2	47° 33.058' N	117° 33.422' W
Water Development or Draft Site		47° 31.108' N	117° 41.559' W
Water Source		47° 29.422' N	117° 39.490' W
Water Source		47° 33.743' N	117° 42.208' W
Water Source		47° 34.306' N	117° 39.369' W