

MAP 2 - Goldie River
 Condition: Fire is expected to move north along the Elwha River drainage toward the Goldie River based on forecast weather and fire behavior conditions.
 Action: Utilize the Goldie River along with helicopter bucket support to slow fire spread and attempt to hamper northward fire spread.
 Values at Risk: Elkhorn Camp (Lost River Bridge, Drums Bridge, Remans Historic Cabin, Elkhorn Bridge, Camp Privy, Ranger Station, Fire cache, patrol cabin, barn), Dodger Point Lookout, Evergreen Creek Bridge
 Resources: Type 1 or 2 Helicopters

MAP 5 - Silt Creek Drainage
 Condition: Fire activity increases on the Diamond Mt Fire or fire spreads from the Delabarre fire (Hayes 2 spot fires) over the barren areas by the Cameron/Lost Pass route and is actively spreading down the Silt Creek Drainage to the east.
 Action: Evaluate potential for fire to reach the planning area boundary to the northeast. Initiate additional trail closures if fire is predicted to impact additional trail systems to the east. Expand the fire planning area and validate the decision. Update as necessary.
 Values at Risk: No Lunch Bridge, Dose Meadows Camp (Privy), Backcountry Shelter, Deception Creek Camp (Privy), Deception Creek Bridge, Upper Twin Bridges (2), Dose Forks (Privy), Sunny Brook Bridge, High Dose Bridge, West Fork Dose Bridge
 Trails: Dosewallips River, Gray Wolf River
 Resources: Fire analyst and/or planner.

MAP 3 - North of Goldie
 Condition: Fire gets established north of the Goldie River on either side of the Elwha River.
 Action: Implement point protection for structures at Elkhorn and Dodger Point Lookout. Assess need for structure protection activities at camps further north on the Elwha. Expand planning area, reevaluate closures and evaluate values at risk and confinement opportunities further north in the Elwha River drainage as well as Hurricane Ridge area. Validate the course of action within the decision and update as necessary.
 Values at Risk: Elkhorn Camp (Lost River Bridge, Drums Bridge, Remans Historic Cabin, Elkhorn Bridge, Camp Privy, Ranger Station, Fire cache, patrol cabin, barn), Dodger Point Lookout, Evergreen Creek Bridge, Mary's Fall Camp Bridge and Privy
 Resources: Fire personnel, pumps and hoses/lay with sprinklers. Structure wrap if available.

MAP 6 - Southern Fire Spread
 Condition: Fire is actively spreading to the south from either the Low Divide, Martin Lake, and/or Delabarre fires and is expected to breach the natural barriers from the Mt Anderson area to Muncaster to the southwest.
 Action: Evaluate structure protection needs in the Quinault River valley including the Enchanted Valley chalet.
 Values at Risk: No Lunch Bridge, Dose Meadows Camp (Privy), Backcountry Shelter, Deception Creek Camp (Privy), Deception Creek Bridge, Upper Twin Bridges (2), Dose Forks (Privy), Sunny Brook Bridge, High Dose Bridge, West Fork Dose Bridge
 Trails: Dosewallips River, Gray Wolf River
 Resources: Fire analyst and/or planner.

MAP 4 - Lost River
 Condition: Fire gets established in the Lost River drainage and is expected to actively spread based on expected environmental conditions.
 Action: Evaluate potential for fire to cross to the northeast over barren areas and get established in the Cameron Creek drainage. Expand the planning area as needed based on probability of fire spread. Reassess closure areas. Validate the decision and update as necessary.
 Values at Risk: Elkhorn Camp (Lost River Bridge, Drums Bridge, Remans Historic Cabin, Elkhorn Bridge, Camp Privy, Ranger Station, Fire cache, patrol cabin, barn), Dodger Point Lookout, Evergreen Creek Bridge, Mary's Fall Camp Bridge and Privy
 Resources: Fire personnel, pumps and hoses/lay with sprinklers. Structure wrap if available.

MAP 7 - SW of Promise Creek
 Condition: Low Divide Fire spreads to the southwest of Promise Creek and/or to the southside of the N. Fork Quinault River and forecast conditions favor active spread to the southwest.
 Action: Evaluate additional structure protection needs along the N. Fork Quinault River drainage. Develop new MAPs for additional spread to the southwest.
 Values at Risk: Trapper Backcountry Shelter, 12 mile Backcountry Shelter, Trails: N. Fork Quinault River, Skyline Bridges on N. Fork of Quinault River: Glacier Creek Bridge, Kimta Creek Bridge, Three Prune Creek Bridge, Squaw Creek Bridge
 Resources: Fire analyst and/or planner.

MAP 8 - Queets Drainage
 Condition: Queets fire spreads to the north side of the Queets River or spreads actively down drainage toward Sahalie Creek and is expected to continue burning actively.
 Action: Evaluate any concerns with fire spread within the upper Queets River drainage and look for confinement opportunities as needed.
 Values at Risk: Queets River Trail
 Resources: Park staff and fire managers.

MAP 7 - SW of Promise Creek
 Condition: Low Divide Fire spreads to the southwest of Promise Creek and/or to the southside of the N. Fork Quinault River and forecast conditions favor active spread to the southwest.
 Action: Evaluate additional structure protection needs along the N. Fork Quinault River drainage. Develop new MAPs for additional spread to the southwest.
 Values at Risk: Trapper Backcountry Shelter, 12 mile Backcountry Shelter, Trails: N. Fork Quinault River, Skyline Bridges on N. Fork of Quinault River: Glacier Creek Bridge, Kimta Creek Bridge, Three Prune Creek Bridge, Squaw Creek Bridge
 Resources: Fire analyst and/or planner.

MAP 8 - Queets Drainage
 Condition: Queets fire spreads to the north side of the Queets River or spreads actively down drainage toward Sahalie Creek and is expected to continue burning actively.
 Action: Evaluate any concerns with fire spread within the upper Queets River drainage and look for confinement opportunities as needed.
 Values at Risk: Queets River Trail
 Resources: Park staff and fire managers.

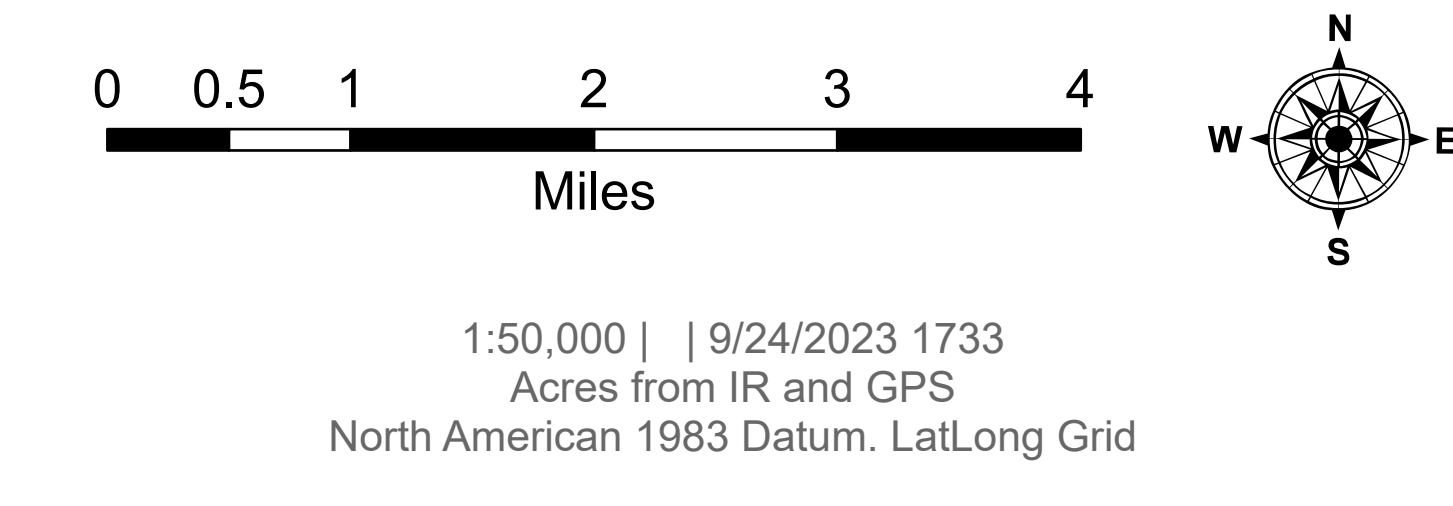
Strategic Planning

Olympic 2023 Lighting Fires

WA-OLP

9/24/2023

4,795 acres at 9/23/2023



- Pump
- Helispot
- Sling Site
- Unimproved Landing Area
- Fire Origin
- Value at Risk
- Other
- Bridge
- Mobile Weather Unit
- Repeater
- Management Action Point
- Planning Area
- Current Fire Perimeters
- Olympic NP Fire History Since 2000

