

INCIDENT ACTION PLAN

LAKE WHATCOM

WA-NWS-241

PNQL1R

Friday



OPERATIONAL PERIOD

9/1/2023 0600

to

9/2/2023 0600





Fire Weather Forecast



FORECAST NO: 20230901

NAME OF FIRE: Lake Whatcom

PREDITION FOR:

SIGNED:

TIME/DATE ISSUED: 17:52 8/31/23

WEATHER DISCUSSION:

The cooler and cloudier conditions are going to take a break for Friday and Saturday with slightly increased temperatures and clear skies. Despite the brief warm up, relative humidity recoveries are going to be good. The next weather system will come through early Sunday morning for the next chance of rain and cooler temperatures. By Sunday afternoon, it is possible that a wetting rain may fall over the incident. The greater majority of next week appears to be cooler with above average chances for light precipitation.

WEATHER FORECAST FOR TODAY:

Sky/weather.....Sunny (20-30 percent).
Max temperature.....Around 76.
Min humidity.....63 percent.
Wind (20 ft).....Northwest winds 5 to 6 mph.
Transport winds.....North around 7 mph.
Haines Index.....2 or very low potential for large plume dominated fire growth.
Rainfall amount.....0.00 inches.
Haines mid level....4 or low potential for large plume dominated fire growth.

WEATHER FORECAST FOR TONIGHT:

Sky/weather.....Mostly clear (15-25 percent).
Min temperature.....Around 57.
Max humidity.....83 percent.
Wind (20 ft).....North winds up to 6 mph in the evening becoming light.
Transport winds.....Northeast around 4 mph.
Haines Index.....3 or very low potential for large plume dominated fire growth.
Rainfall amount.....0.00 inches.
Haines mid level....4 or low potential for large plume dominated fire growth.

OUTLOOK FOR TOMMOROW:

Sky/weather.....Mostly sunny (25-35 percent).
Max temperature.....Around 79.
Min humidity.....63 percent.
Wind (20 ft).....Light winds becoming west around 5 mph in the afternoon.
Transport winds.....Southwest around 4 mph.
Haines Index.....3 or very low potential for large plume dominated fire growth.
Rainfall amount.....0.00 inches.
Haines mid level....4 or low potential for large plume dominated fire growth.

EXTENDED FORECAST:

SUNDAY...Mostly cloudy with a chance of showers. Highs 64 to 74. South winds 8 to 11 mph.
LABOR DAY...Mostly cloudy with a chance of showers. Highs 63 to 73. South winds 6 to 9 mph.
TUESDAY...Partly sunny with slight chance of showers. Highs 63 to 73. Southwest winds 5 to 8 mph.
WEDNESDAY...Mostly cloudy. Chance of showers. Lows 47 to 57. Highs 64 to 74.
THURSDAY...Mostly cloudy. Chance of showers. Lows 46 to 56. Highs 64 to 74.

SAFETY MESSAGE/PLAN (ICS 208)

1. Incident Name:

Lake Whatcom

2. Operational Period: Date From: 09/01/2023 Date To: 09/02/2023

Time From: 0600 Time To: 0600

Major Hazards Identified:

Hazard Trees, Steep Terrain, Rolling Materials, Rugged Access, Falling Operations

Safety Tips

- Maintain hydration, even in cooler temperatures.
- Always use a spotter when backing apparatus
- Drive defensively. Expect wildlife and other hazards.
- No one shall be permitted in the secured felling area without the authorization of the faller.
- Maintain situational awareness and if necessary, adjust actions based on changing conditions.

Identify mitigation measures to reduce risk from hazard trees:

- Identify, communicate, establish, and monitor No-Work-Zones (NWZ) in all high-risk areas until the hazard has been mitigated.
- Assign qualified sawyers and falling bosses based on the complexity of the hazard.
- Consider ordering in higher complexity fallers in advance.
- Plan quick and safe escape routes.
- Minimize exposure time at the stump by employing efficient felling procedures.
- Minimize impacts to the hazard tree from wedge pounding or other felling operations in the area.
- Do not turn your back on a falling tree or known hazard.
- Use lookouts to maintain secure felling areas.
- Discuss/practice medical evacuation procedures and accept risk accordingly.

WATCHOUT SITUATION #13

On a hillside where rolling material can ignite fuel below.

4. Site Safety Plan Required? Yes No

Approved Site Safety Plan(s) Located At:

5. Prepared by: Name: Bonnie Rogers

Position/Title: SOFR

Signature: Bonnie Rogers

ICS 208

IAP Page 4

Date/Time: 08/31/2023 0800

SEWA Type 3 Team

Finance

“Employees are paid for actual hours worked, with no guarantee of a maximum shift length, unless otherwise specified in a formal, authorized agreement.”

--Interagency Incident Business Management Handbook, Chapter 10

MORNING

- ✓ Only those invited to the PRE-BRIEFING Operations meeting may record time before the official briefing start time.
- ✓ Contract crews and equipment will start time according to terms of their contract.
- ✓ Hourly apparatus time starts upon leaving camp.
- ✓ Exception time recorded will be justified on the CTR/Shift Ticket.
- ✓ Line Resources must show a 30-minute break OR justified on the CTR.

***END OF SHIFT ***

- All Contract Crew time stops when they return to camp.
- Hourly apparatus time stops when they enter camp.
- All other personnel are allowed a reasonable time to do vehicle and tool maintenance, generally no more than 30 minutes.
- Any time spent eating a meal in camp is non-compensable. If you eat dinner and then return to work to do tool repair, etc. the dinner break must be shown.

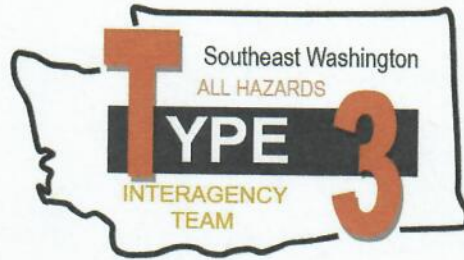
OVER 16 HOUR SHIFT

- Shifts over 16 hours must be signed by the IC prior to submission to Finance.
- There must be a justification and a mitigation plan stated on the CTR

Please turn in Equipment Shift Tickets and CTR's daily

Have a safe shift, stay hydrated

Code of Conduct Incident Personnel



Each individual on this incident is responsible for:

- ☞ Being *ready and able* to perform their assigned duties effectively.
- ☞ Conducting themselves in a manner that treats people with dignity, equality, courtesy, and respect.
- ☞ Abiding by agency ethics and conduct regulations.
- ☞ Reporting any harassment or other inappropriate behavior.

Each individual of this incident has the right to:

- ☞ Work in an environment characterized by safe work practices.
- ☞ Work in a fair and harassment free environment.
- ☞ Say "No" to unwelcome advances or requests for favors.
- ☞ File complaints or grievances through appropriate avenues.

There is zero tolerance for inappropriate behavior while assigned to the incident, including:

- ☞ Illegal drug use
- ☞ Alcohol use
- ☞ Unsafe work practices and activities
- ☞ Discrimination
- ☞ Sexual harassment
- ☞ Fighting, threatening, and abusive behaviors
- ☞ Using social media and electronic communication devices for personal business while engaged in fire assignment duties.
- ☞ Other violations of Fire Service, Washington DNR, and Federal agency standards of conduct.

Failure to adhere to the Code of Conduct could result in dismissal from the incident, with notification to your home unit.

The public expects our best efforts; they see us as professionals in what we say and do. Let's continue to show them we are!

Lake Whatcom
NWS-241
IAP Map

09/01/23 Shift
 Perimeter as of:
 08/31/23 @ 1757
 40 ac

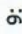

Legend

-  Wildfire Perimeter
- Event Point**
-  Other
-  Water Development or Draft Site
-  Hertz Trail
-  Contained
-  Uncontained
-  Completed Hand Line

Major Roads and Forest Roads

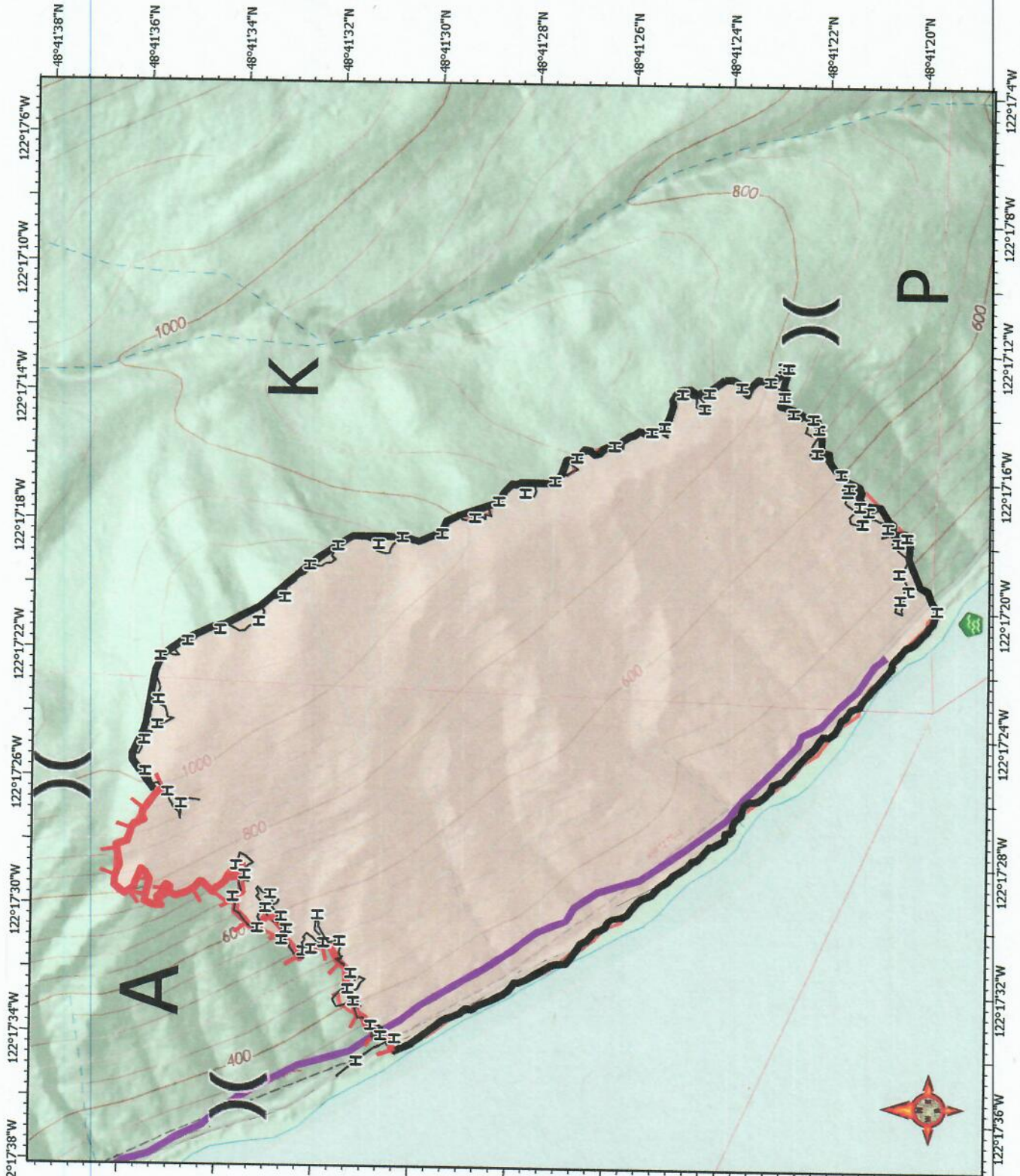
-  Interstates and US Highways
-  State Routes
-  Major Roads

Active Roads

-  1: DNR Active Roads
-  9: Non DNR Roads
-  Unknown Status



RB
 08 31 23
 1813 Hours



Emergency Plan

Incident Within an Incident

On Scene Incident Commander

In the event of an accident or medical incident of any size, your primary responsibility is to ensure that the victim(s) receive prompt and effective Triage, Treatment, Extirpation, and Transport.

- **Ensure the medical incident report in the incident action plan is being used and followed- *If the patient is determined to be green, do not declare emergency traffic and only complete lines 1 – 4 on the MIR*.**
- Conduct a size-up of the incident, nature of the accident, number and type of resources involved, and a latitude and longitude location (DD°MMM.MM format): notify the communications center and your supervisor, and request assistance as needed.
- Order and coordinate medical and support responses to the incident.
- Evaluate special needs (law enforcement, hazmat, etc.).
- Clear the command frequency if a medical emergency, coordinate with incident communications and air attack for any medical transportation needs.
- Preserve and photograph the scene for the accident investigation.
- Remain aware of the surroundings and the status of the main incident (delegate personnel to monitor the main fire) to ensure the safety of medical treatment personnel.
- Until relieved, supervise and manage all personnel involved at the incident scene.

