

**Lake Whatcom  
NWS-241  
IAP Map**

**Shift 09/03/23 - 09/06/23**

**Perimeter as of:  
09/01/23 @ 1844  
40 ac**

**Legend**

- Wildfire Perimeter
- Hertz Trail
- Completed Hand Line
- Access or Improved Road

**Event**

- Division Break
- Water Development or Draft Site

**P-Line**

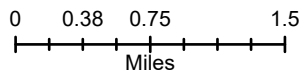
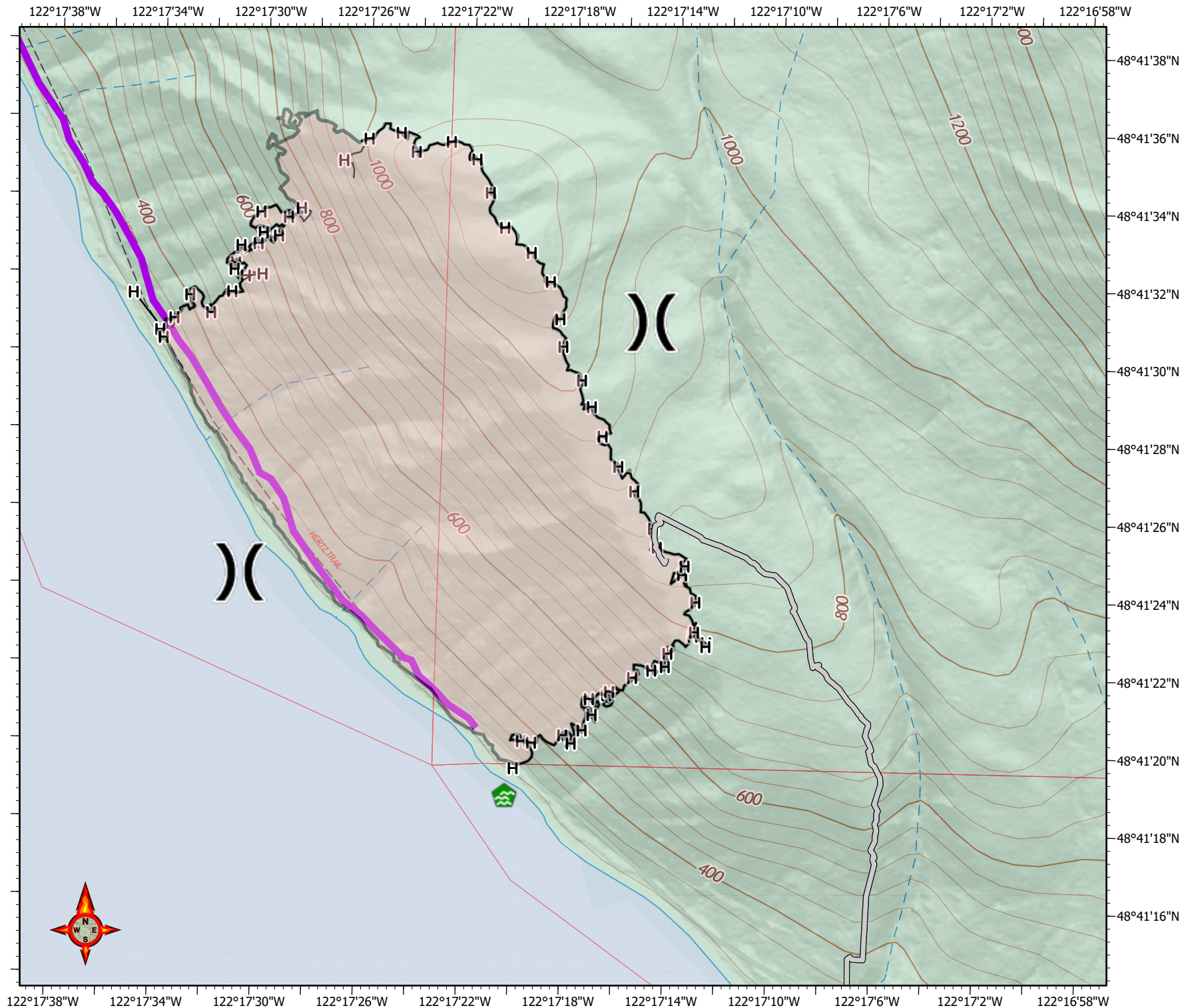
- Access or Improved Road

**Major Roads and  
Forest Roads**

- Interstates and US Highways
- State Routes
- Major Roads

**Active Roads**

- 1: DNR Active Roads
- 9: Non DNR Roads
- Unknown Status



RB  
09 02 23  
1604 Hours