






## INCIDENT OBJECTIVES (ICS 202)

<b>1. Incident Name:</b>		<b>2. Operational Period: ALL SHIFTS</b>	
MCEWAN		Date/Time From: 07/07/2023 0700      FRI	Date/Time To: 07/08/2023 0700      SAT
<b>3. Objective(s):</b>			
<ul style="list-style-type: none"> <li>Provide for the safety of Incident Responders and the public by utilizing a risk management process.</li> <li>Minimize acres burned.</li> <li>Manage for full suppression. Utilize strategies and tactics that have a high probability of achieving containment</li> <li>Provide timely information to Assisting and Cooperating agencies; and the public, as appropriate.</li> <li>Operate in a cost-effective manner unless doing so negatively impacts safe operations and/or significantly impacts operational efficiency.</li> </ul>			
<b>4. Operational Period Command Emphasis:</b>			
Safely work to protect life, property, critical infrastructure, and the environment while mitigating the fire problem.			
Emphasis is on safety in hot environment.			
<b>General Situational Awareness:</b>			
<b>5. Site Safety Plan Required?</b> Yes <input type="checkbox"/> No <input checked="" type="checkbox"/>			
<b>Approved Site Safety Plan(s) Located</b>			
<b>6. Incident Action Plan</b> (the items checked below are included in this Incident Action Plan):			
<input checked="" type="checkbox"/> ICS 202	<input type="checkbox"/> ICS 207	Other Attachments: <input type="checkbox"/> _____ <input type="checkbox"/> _____ <input type="checkbox"/> _____ <input type="checkbox"/> _____	
<input checked="" type="checkbox"/> ICS 203	<input checked="" type="checkbox"/> ICS 208		
<input checked="" type="checkbox"/> ICS 204	<input type="checkbox"/> ICS 220		
<input checked="" type="checkbox"/> ICS 205	<input checked="" type="checkbox"/> Map/Chart		
<input type="checkbox"/> ICS 205A	<input checked="" type="checkbox"/> Weather Forecast/Tides/Currents		
<input checked="" type="checkbox"/> ICS 206			
<b>7. Prepared by:</b> BRAD READING		<b>Position/Title:</b> PSC3	<b>Signature:</b>
<b>8. Approved by Incident Commander:</b>		<b>Name:</b> KENT STANFORD	<b>Signature:</b>
<b>ICS 202</b>		<b>IAP Page</b>	<b>Date/Time:</b> 07/06/2023 1900

## ORGANIZATION ASSIGNMENT LIST (ICS 203)

<b>1. Incident Name:</b>		<b>2. Operational Period:</b> ALL SHIFTS	
MCEWAN		Date/Time From: 07/07/2023 0700 FRI	Date/Time To: 07/08/2023 0700 SAT
<b>3. Incident Commander(s) and Command Staff:</b>		<b>6. Logistics Section:</b>	
IC/UC	STANFORD, KENT	CHIEF	GRIFFIN, TODD
DEPUTY	KOEHLER, SCOTT	DEPUTY	
SAFETY OFFICER	BROWN, MARSHALL	SUPPLY UNIT	
LIAISON OFFICER	MCKERN, TIMOTHY MICHAEL STRONG, PAUL M (T)	FACILITIES UNIT	PREVOST, MICHAEL R
INFORMATION OFFICER	HULD, IVAN BROCK, NORMA	GROUND SUPPORT UNIT	
		COMMUNICATIONS UNIT	
<b>4. Agency/Organization Representative(s):</b>		MEDICAL UNIT	ENGLE, STEVEN PHILLIP RAHIER, THERON BRADLEY (T)
<b>Agency/Organization</b>	<b>Name</b>	SECURITY UNIT	
WA-DNR	MELTON, DON	FOOD UNIT	
MASON COUNTY SHERIFF	SEVERANCE, TREVOR	<b>7. Operations Section:</b>	
MASON COUNTY FIRE DISTRICT #5	SNYDER, JEFF SEARLES, BRANDON	DAY OPS SECTION CHIEF	BURNS, CHARLEY
GREEN DIAMOND TIMBER	MAGALSKA, LAUREN	NIGHT OPS SECTION CHIEF	
MASON COUNTY EMERGENCY MANAGEMENT	TAYLOR, JOHN	PLANNING OPS	WESTLAKE, STEVE
SHELTON SCHOOL DISTRICT	HERRON, ROBERT	OPS SECTION CHIEF	
BONNEVILLE POWER ADMINISTRATION	OLEARY, MARY BETH SYKORA, MONICA	DEPUTY OPS SECTION CHIEF	
CASCADE NATURAL GAS	MATHEWS, CLINT JENKINS, CHUCK	STAGING AREA	
MASON COUNTY PUD 3	EATON, LYNN CORSON, SHEILA	DIVISION/GROUP A	LIVDAHL, JASON
		DIVISION/GROUP Z	HEIDAL, DALE EDWARD
		DIVISION/GROUP STAGING	TBD
		DIVISION/GROUP NIGHTS	SCHAFFNAN
<b>5. Planning Section:</b>		<b>7b. Air Operations Branch:</b>	
CHIEF	READING, BRAD	AIR OPS BRANCH DIRECTOR	
DEPUTY		AIR ATTACK SUPERVISOR	
RESOURCES UNIT		AIR SUPPORT SUPERVISOR	
SITUATION UNIT	COX, LAURIE	HELICOPTER COORDINATOR	
DOCUMENTATION UNIT		AIR TANKER COORDINATOR	
DEMOBILIZATION UNIT		<b>8. Finance/Administration Section:</b>	
FIRE BEHAVIOR ANALYST		CHIEF	PRICE, LORI
HUMAN RESOURCE SPECIALIST		DEPUTY	
TRAINING SPECIALIST		TIME UNIT	
GIS SPECIALIST		PROCUREMENT UNIT	JAMES, PAULA
TECHNOLOGY SUPPORT SPECIALIST		COMPENSATION UNIT	
INCIDENT METEOROLOGIST		COST UNIT	
ITSS	DAVID BISHOP		
<b>9. Prepared By:</b>	<b>Name:</b> BRAD READING	<b>Position/Title:</b> PSC	<b>Signature:</b> 
ICS 203	IAP Page	<b>Date/Time:</b> 07/06/2023 1500	

DRAFT

2/18

**MCEWAN**

National Weather Service Seattle

2023-07-06 2:06 PM PDT

Spot Forecast for MCEWAN...WWIMT  
 National Weather Service Seattle WA  
 206 PM PDT Thu Jul 6 2023

Forecast is based on forecast start time of 1800 PDT on July 06.  
 If conditions become unrepresentative, contact the National Weather Service.

Please contact our office at (206) 526-6095, if you have questions or concerns with this forecast.

.DISCUSSION...Looking at a clear but gusty afternoon. Gusts in the area have reached 25 mph and will likely continue through the evening before settling down after sunset. A stronger onshore push will begin this evening and bring humidities near 100 percent back to the area as well as cloud cover. Temperatures will cool a few degrees by Friday into the upper 70s with min RH values in the 40s. Afternoon wind speeds may come up again as the atmosphere begins to mix out, similarly to today with gusts between 15 and 25 mph out of the southwest.

.TONIGHT...

Sky/weather.....Mostly clear becoming mostly cloudy after 3 AM local time. Haze.

CWR.....0 percent.

LAL.....1.

Min temperature.....Around 53.

Max humidity.....93 percent.

Wind (20 ft).....Southwest winds 10 to 15 mph. Gusts to 25 mph.

Mixing height.....500 ft AGL.

Transport winds.....West around 10 mph.

Haines Index.....5 or moderate potential for large plume dominated fire growth.

Rainfall amount.....0.00 inches.

.FRIDAY...

Sky/weather.....Cloudy in the morning becoming sunny after 12 noon.  
 Haze in the morning.

CWR.....0 percent.

LAL.....1.

Max temperature.....Around 78.

Min humidity.....49 percent.

Wind (20 ft).....Southwest winds 6 to 9 mph with occasional gust to 15 mph.

Mixing height.....2000 ft AGL.

Transport winds.....West around 10 mph.

Haines Index.....5 or moderate potential for large plume dominated fire growth.

Rainfall amount.....0.00 inches.

.FRIDAY NIGHT...

Sky/weather.....Mostly clear then becoming  
 mostly cloudy.

CWR.....0 percent.

LAL.....1.

Min temperature.....Around 51.

Max humidity.....95 percent.

Wind (20 ft).....Southwest winds 8 to 9 mph.

3/18

Mixing height.....600 ft AGL.  
Transport winds.....West around 12 mph.  
Haines Index.....5 or moderate potential for large plume  
dominated fire growth.  
Rainfall amount.....0.00 inches.


\$\$

Forecaster...Kristell  
Requested by...Jason Livdahl  
Type of request...WILDFIRE  
.TAG 2316381.2/SEW  
.DELDT 07/06/23  
.FormatterVersion 2.0.0  
.EMAIL jlivdahl@bifd.org

4/18

## Division/Group Assignment List (ICS 204 WF)


Controlled Unclassified Information//Basic

<b>1. Incident Name:</b>			<b>3.</b>			
MCEWAN			<b>Branch:</b>		<b>Division/Group</b>  <b>A</b>	
<b>2. Operational Period:</b> ALL SHIFTS						
Date/Time From: 07/07/2023 0700 FRI		Date/Time To: 07/08/2023 0700 SAT				
<b>4. Operations Personnel</b>						
<b>OPERATIONS CHIEF</b> CHARLEY BURNS			<b>DIVISION/GROUP SUPERVISOR</b> LIVDAHL, JASON			
<b>5. Resources Assigned this Period</b>						
Strike Team / Task Force / Resource Designator		LWD	Leader		Number Persons	Drop Off PT./Time
C2 CREW GRIZZLY					20	
SOUTH PUGET STRIKE TEAM			WARD		15	
CEDAR CREEK CREW			ALEXANDER		11	
E14 ENG6 - STEELHEAD ENTERPRISES LLC		07/18	MALVIN, JOESPH		3	
E11 ENG6 METHOW RIVER			PETO		3	
E12 ENG6 LATE SUMMER			ETTENHOFER		3	
E16 ENG6 FRANCO REFORT.			HUGY		3	
E18 ENG6 BLACKSTONE FORESTRY		07/18	THOMAS		3	
<b>6. Control Operations/Work Assignments:</b>						
<p><b>Task:</b>                  Hold and improve lines.                  Protect values at risk.                  Construct direct lines to minimize fire spread.</p> <p><b>Purpose:</b>                  Contain the fire when minimizing acres burned.                  Minimize fire size and reduce spread potential that would adversely impact structures/infrastructure improvements.</p> <p><b>End State:</b>                  Structures and critical infrastructure protected.                  Fire contained with strategies commensurate with risk while minimizing acres burned.                  Keep fire east of John's Creek development.                  Keep fire north and west of BPA powerlines.                  Keep fire west of Rainbow Lake development.</p>						
<b>7. Special Instructions:</b>						
Ensure LCES before engaging. Identify hazard trees for isolation and felling operations.						
<b>8. Division/Group Communication Summary</b>						
Function	Channel	RX Frequency N/W	RX Tone/NAC	TX Frequency N/W	TX Tone/NAC	Mode
COMMAND	1	159.3150	127.3	151.1750	127.3	A
TACTICAL	3	151.3100	192.8	1513100	192.8	A
AIR TO GROUND	13	159.2700	103.5	159.2700	103.5	A
AIR GUARD	16	168.6250		168.6250	110.9	A
<b>9. Prepared By (Resource Unit Leader)</b>			<b>Approved By (Planning Section Chief)</b>		<b>Date</b>	<b>Time</b>
BRAD READING			BRAD READING 		07/06/2023	1700

5/18

## Division/Group Assignment List (ICS 204 WF)

Controlled Unclassified Information//Basic


<b>1. Incident Name:</b>			<b>3.</b>			
MCEWAN			Branch:		Division/Group  Z	
<b>2. Operational Period:</b> ALL SHIFTS						
Date/Time From: 07/07/2023 0700 FRI		Date/Time To: 07/08/2023 0700 SAT				
<b>4. Operations Personnel</b>						
<b>OPERATIONS CHIEF</b>		CHARLEY BURNS		<b>BRANCH DIRECTOR</b>		
<b>DIVISION/GROUP SUPERVISOR</b>		HEIDEL		<b>AIR ATTACK SUPERVISOR</b>		
<b>5. Resources Assigned this Period</b>						
Strike Team / Task Force / Resource Designator		LWD	Leader	Number Persons	Drop Off PT./Time	Pick Up PT./Time
C1 GRIZZLY CREW			FERNANDO	20		
SW STRIKE TEAM			GOBLE	15		
E15 ENG6 DESCHUTES U-BOAT			DAMES	3		
E13 ENG6 LIBERTY WILDFIRE			MIDDLETON	3		
C3 CR2I - NW - NES - NORTH COLUMBIA - DNR		07/18	OLSON	21		
E10 ENG6 NORTHRIDGE WILDFIRE		07/18	BECK	1		
E17 ENG6 - FIREMOG, LLC		07/19	STULTZ, KEVIN	3		
E9 ENG6 - METHOW RIVER WILD FIRE		07/19	MUNOZ	3		
<b>6. Control Operations/Work Assignments:</b>						
<b>Task:</b> Hold and improve lines. Protect values at risk. Construct direct lines to minimize fire spread.						
<b>Purpose:</b> Contain the fire when minimizing acres burned. Minimize fire size and reduce spread potential that would adversely impact structures/infrastructure improvements.						
<b>End State:</b> Structures and critical infrastructure protected. Fire contained with strategies commensurate with risk while minimizing acres burned. Keep fire south of East McEwan Prairie Road.						
<b>7. Special Instructions:</b> Ensure LCES before engaging. Identify hazard trees for isolation and felling operations.						
<b>8. Division/Group Communication Summary</b>						
Function	Channel	RX Frequency N/W	RX Tone/NAC	TX Frequency N/W	TX Tone/NAC	Mode
COMMAND	1	159.3150	127.3	151.1750	127.3	A
TACTICAL	4	151.3400	192.8	151.3400	192.8	A
AIR TO GROUND	13	159.2700	103.5	159.2700	103.5	A
AIR TO GROUND	14	151.2875	103.5	151.2875	103.5	A
AIR GUARD	16	168.6250		168.6250	110.9	A
<b>9. Prepared By (Resource Unit Leader)</b>			<b>Approved By (Planning Section Chief)</b>		<b>Date</b>	<b>Time</b>
BRAD READING			BRAD READING 		07/06/2023	1700

6/18




## Division/Group Assignment List (ICS 204 WF)

Controlled Unclassified Information//Basic

<b>1. Incident Name:</b>			<b>3.</b>			
MCEWAN			<b>Branch:</b>		<b>Division/Group</b>	
<b>2. Operational Period:</b> ALL SHIFTS					<b>NIGHT</b>	
Date/Time From: 07/07/2023 0700 FRI			Date/Time To: 07/08/2023 0700 SAT			
<b>4. Operations Personnel</b>						
<b>OPERATIONS CHIEF</b> CHARLEY BURNS		<b>BRANCH DIRECTOR</b>				
<b>DIVISION/GROUP SUPERVISOR</b> SCHAFFNAN		<b>AIR ATTACK SUPERVISOR</b>				
<b>5. Resources Assigned this Period</b>						
Strike Team / Task Force / Resource Designator		LWD	Leader	Number Persons	Drop Off PT./Time	Pick Up PT./Time
E-2376 HOODSPORT FIRE				3		
E-2377 MCFD6				2		
E-2378 PCFD3				2		
E-2379 VALLEY REGIONAL				3		
<b>6. Control Operations/Work Assignments:</b>						
<p><b>Task:</b> Hold and improve lines. Protect values at risk. Construct direct lines to minimize fire spread.</p> <p><b>Purpose:</b> Contain the fire when minimizing acres burned. Minimize fire size and reduce spread potential that would adversely impact structures/infrastructure improvements.</p> <p><b>End State:</b> Structures and critical infrastructure protected. Fire contained with strategies commensurate with risk while minimizing acres burned.</p>						
<b>7. Special Instructions:</b>						
Ensure LCES before engaging. Identify hazard trees for isolation and felling operations.						
<b>8. Division/Group Communication Summary</b>						
Function	Channel	RX Frequency N/W	RX Tone/NAC	TX Frequency N/W	TX Tone/NAC	Mode
COMMAND	1	159.3150	127.3	151.1750	127.3	A
COMMAND	2	159.2550	114.8	151.2050	114.8	A
TACTICAL	3	151.3100	192.8	151.3100	192.8	A
TACTICAL	4	151.3400	192.8	151.3400	192.8	A
<b>9. Prepared By (Resource Unit Leader)</b>			<b>Approved By (Planning Section Chief)</b>		<b>Date</b>	<b>Time</b>
BRAD READING			BRAD READING 		07/06/2023	1700

7/18

**Division/Group Assignment List (ICS 204 WF)**  
Controlled Unclassified Information//Basic

<b>1. Incident Name:</b>		<b>3.</b>				
MCEWAN		<b>2. Operational Period:</b> <b>ALL SHIFTS</b>		<b>Branch:</b>  <b>Division/Group</b>  <b>STAGING</b>		
Date/Time From: 07/07/2023 0700      FRI	Date/Time To: 07/08/2023 0700      SAT					
<b>4. Operations Personnel</b>						
<b>OPERATIONS CHIEF</b>		CHARLEY BURNS		<b>BRANCH DIRECTOR</b>		
<b>DIVISION/GROUP SUPERVISOR</b>				<b>AIR ATTACK SUPERVISOR</b>		
<b>5. Resources Assigned this Period</b>						
Strike Team / Task Force / Resource Designator	LWD	Leader	Number Persons	Drop Off PT./Time	Pick Up PT./Time	
DOZER T-2			1			
EXCAVATOR			1			
TREE SERVICE		MONTE	2			
HEQB		WOODS	1			
SKIDSTEER--MONTY'S TREE SERVICE	07/19		1			
MASTICATOR						
<b>6. Control Operations/Work Assignments:</b>						
<p><b>Task:</b> Hold and improve lines. Protect values at risk. Construct direct lines to minimize fire spread.</p> <p><b>Purpose:</b> Contain the fire when minimizing acres burned. Minimize fire size and reduce spread potential that would adversely impact structures/infrastructure improvements.</p> <p><b>End State:</b> Structures and critical infrastructure protected. Fire contained with strategies commensurate with risk while minimizing acres burned.</p>						
<b>7. Special Instructions:</b>						
Ensure LCES before engaging. Identify hazard trees for isolation and felling operations.						
<b>8. Division/Group Communication Summary</b>						
Function	Channel	RX Frequency N/W	RX Tone/NAC	TX Frequency N/W	TX Tone/NAC	Mode
COMMAND	1	159.3150	127.3	151.1750	127.3	A
COMMAND	2	159.2550	114.8	151.2050	114.8	A
TACTICAL	3	151.3100	192.8	151.3100	192.8	A
TACTICAL	4	151.3400	192.8	151.3400	192.8	A
<b>9. Prepared By (Resource Unit Leader)</b>		<b>Approved By (Planning Section Chief)</b>		<b>Date</b>	<b>Time</b>	
BRAD READING		BRAD READING 		07/06/2023	1700	

8/18



## HEALTH AND SAFETY MESSAGE

*Western Washington Incident Management Team*

**INCIDENT: McEwan**

**DATE: 7/7/2023**

Five common denominators of fire behavior on fatal and near-fatal fires have been identified through studies of tragedy fires. It is important for firefighters to readily recognize them to prevent future disasters.

Such fires often occur:

1. On relatively small fires or deceptively quiet areas of large fires.
2. In relatively light fuels, such as grass, herbs, and light brush.
3. When there is an unexpected shift in wind direction or in wind speed.
4. When fire responds to topographic conditions and runs uphill.
5. Critical burn period between 1400 and 1700.

Alignment of topography and wind during the critical burning period should be considered a trigger point to reevaluate tactics.

Blowup to burn over conditions generally occur in less than 60 minutes and can be as little as 5 minutes.

Some key practical implications for wildland firefighters:

1. The fire environment conditions or subsequent fire behavior, particularly rate of spread, at the time of the entrapment does not need to be extreme or unusual for an entrapment to occur; it only needs to be unexpected in the sense that the firefighters involved did not anticipate or could not adapt to the observed fire behavior in enough time to reach an adequate safety zone;
2. The site and regional-specific environmental conditions at the time and location of the entrapment are important; in other words, the set of environmental conditions common to firefighter entrapments in one region do not necessarily translate to other locations;
3. As noted by several authors, human factors or human behavior are a critical component of firefighter entrapments, so much so that while an analysis of the common environmental conditions associated with entrapments will yield a better understanding of the conditions that increase the likelihood of an entrapment, it will not produce models or define characteristics that predict where and when entrapments are likely to occur.

*Safety Officer: Marshall Brown*

8/18

# INCIDENT RADIO COMMUNICATIONS PLAN (ICS 205)

Controlled Unclassified Information//Basic

<b>1. Incident Name:</b> MCEWAN	<b>2. Date/Time Prepared:</b> Date: 07/06/2023 Time: 1456	<b>3. Operational Period:</b> ALL SHIFTS Date/Time From: 07/07/2023 0700 FRI Date/Time To: 07/08/2023 0700 SAT
------------------------------------	---	--

4. Basic Radio Channel Use:										
Zone Group	Ch #	Function	Channel Name/Trunked Radio System Talkgroup	Assignment	RX Freq	RX Tone/NAC	TX Freq	TX Tone/NAC	Mode (A, D, or M)	Remarks
	1	COMMAND	SHELTON	COMMAND	159.3150	127.3	151.1750	127.3	A	South Puget
	2	COMMAND	BELFAIR	COMMAND	159.2550	114.8	151.2050	114.8	A	IA Only
	3	TACTICAL	TAC 3	DIV A	151.3100	192.8	151.3100	192.8	A	
	4	TACTICAL	TAC 4	DIV Z	151.3400	192.8	151.3400	192.8	A	
	5	TACTICAL	TAC 5		151.3850	192.8	151.3850	192.8	A	
	6	TACTICAL	TAC 6		151.2125	192.8	151.2125	192.8	A	
	7	TACTICAL	COMMON		151.4150	103.5	151.4150	103.5	A	
	8	TACTICAL	REDNET		153.8300		153.8300		A	
	13	AIR TO GROUND	A/G 1		159.2700	103.5	159.2700	103.5	A	Air to Ground 1
	14	AIR TO GROUND	A/G 2		151.2875	103.5	151.2875	103.5	A	Air to Ground 2
	15	AIR TO GROUND	VMED 29		155.3475		155.3475	156.7	A	Emergency Medivac
	16	AIR GUARD	AIRGUARD		168.6250		168.6250	110.9	A	Emergency Air Ops

<b>5. Special Instructions:</b>	
<b>6. Prepared By</b> (Communications Unit Leader)	Name: BRAD READING Signature:
ICS 205	IAP Page Date/Time: 07/06/2023 1456

10/18

# MEDICAL PLAN (ICS 206 WF)

Incident/Project Name				Operational Period				
MCEWAN				Date/Time 07-7-2023 07:00 to 07:00				
Ambulance Services								
Name	Complete Address	Phone & EMS Frequency	Advanced Life Support (ALS)					
			Yes	No				
Central Mason Fire & EMS	122 W Franklin St, Shelton WA	911	x					
Air Ambulance Services								
Name		Phone	Type of Aircraft & Capability					
Airlift Northwest		911 (1-800-426-2430)	Rotor					
Life Flight		911 (1-800-232-0911)	Rotor					
Hospitals								
Name Complete Address	GPS Datum – WGS 84 DD° MM.MMM' N – Lat DD° MM.MMM' W – Long		Travel Time from ICP		ER Phone	Helipad		Level of Care Facility
	Lat	Long	Air	Ground		Yes	No	
Mason General 901 Mountain View Drive Shelton, WA	Lat	47.224816	N/A	10m	360-426-8171	X		Level 4 Trauma Center
	Long	-123.112374						
Providence St. Peters 413 Lilly RD NE Olympia, WA	Lat	47.0522	15m	35m	360-438-6666	X		Level 3 Trauma Center
	Long	122.8476						
Harborview Medical Center 325 9 <sup>th</sup> Ave, Seattle, WA	Lat	47° 36.190'	25m	1hr 45m	206-744-3000	X		Level 1 Trauma Burn Center
	Long	122° 19.500						
<b>Division   Branch   Group</b>		<b>Area Location Capability</b>						
MEDL Contact Number		Steven Engle	360-731-9476					
MEDL-T Contact Number		Theron Rahier	360-265-9036					

Line EMS	EMS Responders & Capability	
		Equipment Available on scene

Prepared by (Medical Unit Leader)	Date/Time	Approved by (Safety Officer)	Date/Time
Theron Rahier MEDL-t	07-06-2023	Marshall Brown	07-06-2023

In case of an urgent medical emergency (Yellow or Red), Establish an IC for the IWI and follow your Medical Incident Report and contact MCEWAN Communications on Command. Daily- Establish your PACE (Primary, Alternative, Contingency, Emergency) model for medical emergency extraction.

*11/18*



**Poison Ivy**



**Poison Oak**



**Poison Sumac**

12/3

# Western Washington Incident Management

## TYPE III HR Message

### Why Is Mutual Respect Important?

A lack of respect makes working in harmony with crew members difficult, if not impossible. It often leads to negative behaviors, such as name-calling, gossip, and bullying. That's why it's important to build mutual respect into your crew operating expectations. Every workplace consists of people with different personality traits, which can lead to misunderstandings, disagreements, and conflict. But with a foundation of mutual trust and respect, the unique contributions of each team member are valued and needed. When you have disputes work to handle them respectfully.

### How to Practice Mutual Respect in the Workplace

- **Celebrate the unique contributions of each crew member.** One of the best ways to make crew members feel respected is to affirm the value they bring to the crew. This can help encourage better teamwork and instill a greater sense of self-respect in your coworkers.
- **Practice active listening.** Active listening is paramount in every good relationship. It involves giving your full attention to a person who is speaking. Being a good listener is a highly valued interpersonal skill for crew leaders and overhead.
- **Find common ground with your coworkers.** You may not agree with everything your coworkers say or decide to do, but mutual respect includes finding common ground and treating others with respect. A crucial aspect of this is being able to collaborate with those who share different viewpoints, personality traits, and backgrounds.
- **Report negative behavior to human resources.** Disparaging remarks about religion, sexual orientation, ethnicity, or physical ability are not only disrespectful but could violate anti-discrimination laws. If you witness bullying or disrespectful behavior, report it to any member of the management team. By doing so, you're showing respect to the affected coworker.

12/18

# FINANCE MESSAGE

PLEASE EMAIL DOCUMENTATION TO  
[2023.mcewan.finance@firenet.gov](mailto:2023.mcewan.finance@firenet.gov)

**PLEASE HAVE ALL CTRS AND SHIFT TICKETS  
SIGNED BEFORE SUBMITTING**

## **DOCUMENTATION NEEDED**

### **OVERHEAD**

Resource Order  
CTRs

### **ADS & STATE CASUAL HIRES**

Resource Order  
Casual Hire Form  
CTRs

### **ENGINES**

Resource Order  
Manifest  
CTRs

### **CREWS**

Resource Order  
Manifest  
CTRs  
Agreement (Cooperator or Contractor)

### **AGENCY CREWS WITH ADS**

Resource Order  
Manifest with AD Rates  
CTRs

### **EQUIPMENT CONTRACTORS**

**Please complete incident check-in prior to checking in with finance**

Resource Order  
Copy of Agreement  
Vehicle Pre-Inspection Sheet  
Completed signed shift tickets

14/18



# McEwan WA-SPS-000112 IAP Map

07/07/2023 Day Shift  
244 acres at 07/05/2023 @ 0600

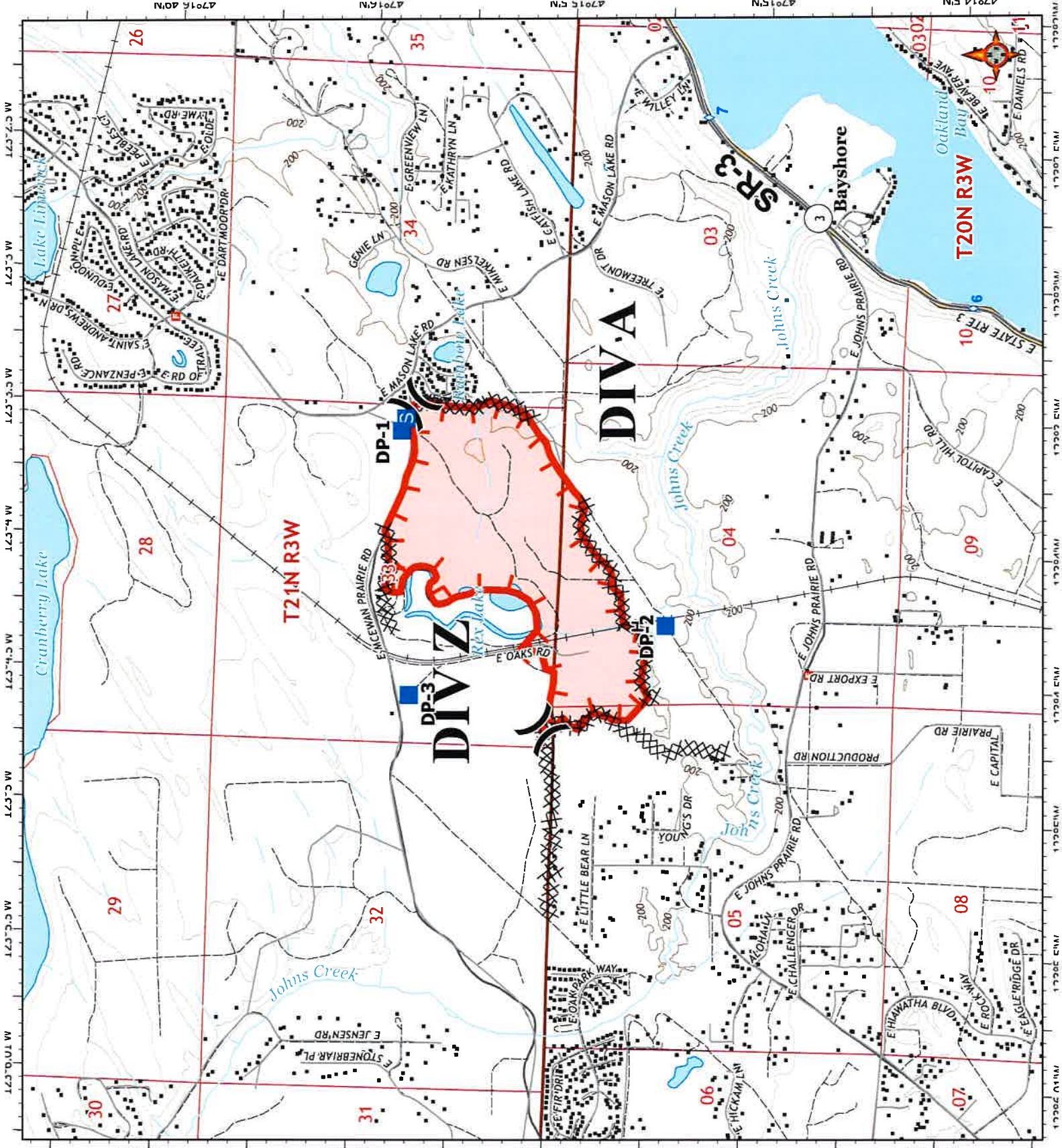
- ( ) Division Break
- Drop Point
- Staging Area
- Fire Station
- Structures
- ⊗ Completed Dozer Line
- Completed Hand Line
- Uncontained Fire Edge
- Highway
- Primary Road
- Light-Duty Road
- Unimproved Road
- Closed Road
- Railroad
- Fire Area



0 0.25 0.5  
Miles

S. Bushnell  
07 06 23  
1521 Hours  
Acres from sketch

Datum: North American 1983 HARN

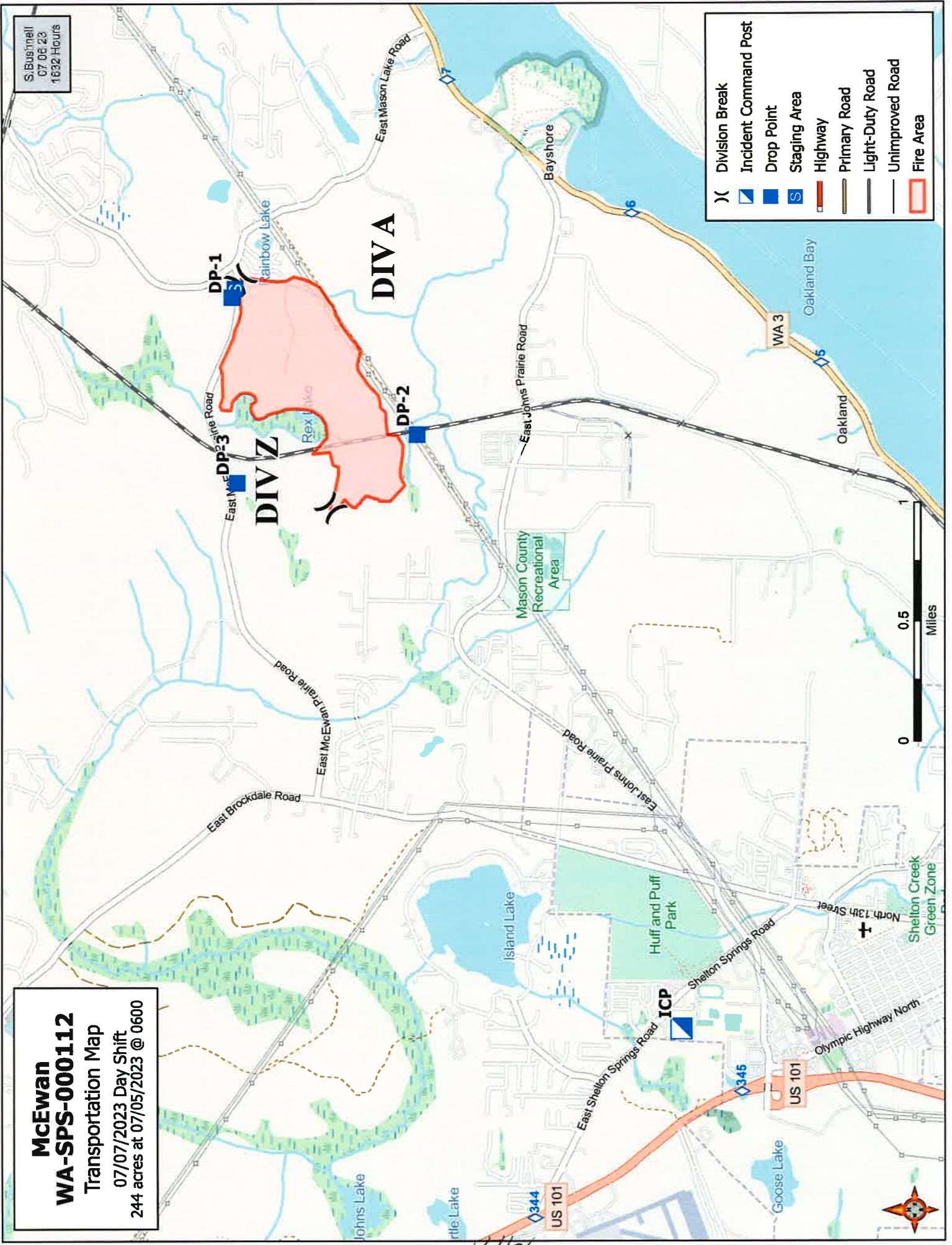


8/1/18

S. Bustinelli  
07/06/23  
1632 Hours

**McEwan**  
**WA-SPS-000112**  
Transportation Map  
07/07/2023 Day Shift  
244 acres at 07/05/2023 @ 0600

- Division Break
- Incident Command Post
- Drop Point
- Staging Area
- Highway
- Primary Road
- Light-Duty Road
- Unimproved Road
- Fire Area



07/19

## ACTIVITY LOG (ICS 214)

<b>1. Incident Name:</b>	<b>2. Operational Period:</b> Date From: _____ Date To: _____ Time From: _____ Time To: _____	
<b>3. Name:</b>	<b>4. ICS Position:</b>	<b>5. Home Agency (and Unit):</b>
<b>6. Resources Assigned:</b>		
Name	ICS Position	Home Agency (and Unit)
<b>7. Activity Log:</b>		
Date/Time	Notable Activities	
<b>8. Prepared by:</b> Name: _____	Position/Title: _____	Signature: _____
ICS 214, Page 1	Date/Time: _____	

17/18

# MEDICAL PLAN (ICS 206 WF)

Controlled Unclassified Information//Basic

## Medical Incident Report

**FOR A NON-EMERGENCY INCIDENT, WORK THROUGH CHAIN OF COMMAND TO REPORT AND TRANSPORT INJURED PERSONNEL AS NECESSARY.**

**FOR A MEDICAL EMERGENCY: IDENTIFY ON-SCENE INCIDENT COMMANDER BY NAME AND POSITION AND ANNOUNCE "MEDICAL EMERGENCY" TO INITIATE RESPONSE FROM IMT COMMUNICATIONS/DISPATCH.**

**Use the following items to communicate situation to communications/dispatch.**

**1. CONTACT COMMUNICATIONS / DISPATCH** (Verify correct frequency prior to starting report)

*Ex: "Communications, Div. Alpha. Stand-by for Emergency Traffic."*

**2. INCIDENT STATUS:** Provide incident summary (including number of patients) and command structure.

*Ex: "Communications, I have a Red priority patient, unconscious, struck by a falling tree. Requesting air ambulance to Forest Road 1 at (Lat./Long.) This will be the Trout Meadow Medical, IC is TFLD Jones. EMT Smith is providing medical care."*

Severity of Emergency / Transport Priority	<input type="checkbox"/> <b>RED / PRIORITY 1 Life or limb threatening injury or illness. Evacuation need is IMMEDIATE</b> <i>Ex: Unconscious, difficulty breathing, bleeding severely, 2° – 3° burns more than 4 palm sizes, heat stroke, disoriented.</i> <input type="checkbox"/> <b>YELLOW / PRIORITY 2 Serious Injury or illness. Evacuation may be DELAYED if necessary.</b> <i>Ex: Significant trauma, unable to walk, 2° – 3° burns not more than 1-3 palm sizes.</i> <input type="checkbox"/> <b>GREEN / PRIORITY 3 Minor Injury or illness. Non-Emergency transport</b> <i>Ex: Sprains, strains, minor heat-related illness.</i>	
Nature of Injury or Illness & Mechanism of Injury		Brief Summary of Injury or Illness <i>(Ex: Unconscious, Struck by Falling Tree)</i>
Evacuation Request		Air Ambulance / Short Haul/Hoist Ground Ambulance / Other
Patient Location		Descriptive Location & Lat. / Long. (WGS84)
Incident Name		Geographic Name + Medical <i>(Ex: Trout Meadow Medical)</i>
On-Scene Incident Commander		Name of on-scene IC of Incident within an Incident <i>(Ex: TFLD Jones)</i>
Patient Care		Name of Care Provider <i>(Ex: EMT Smith)</i>

**3. INITIAL PATIENT ASSESSMENT:** Complete this section for each patient as applicable (start with the most severe patient)

Patient Assessment: See IRPG PAGE 106

Treatment:

**4. EVACUATION PLAN:**

Evacuation Location (if different): (Descriptive Location (drop point, intersection, etc.) or Lat. / Long.) Patient's ETA to Evacuation Location:

Helispot / Extraction Site Size and Hazards:

**5. ADDITIONAL RESOURCES / EQUIPMENT NEEDS:**

*Example: Paramedic/EMT, crews, immobilization devices, AED, oxygen, trauma bag, IV/fluid(s), splints, rope rescue, wheeled litter, HAZMAT, extrication*

**6. COMMUNICATIONS: Identify State Air/Ground EMS Frequencies and Hospital Contacts as applicable**

Function	Channel Name/Number	Receive (RX)	Tone/NAC *	Transmit (TX)	Tone/NAC *
COMMAND					
AIR-TO-GRND					
TACTICAL					

**7. CONTINGENCY: Considerations:** If primary options fail, what actions can be implemented in conjunction with primary evacuation method? Be thinking ahead..

**8. ADDITIONAL INFORMATION:** Updates/Changes, etc.

**REMEMBER:** Confirm ETAs of resources ordered. Act according to your level of training. Be Alert. Keep Calm. Think Clearly. Act Decisively.

*10/18*