

MCEWAN FIRE

INCIDENT ACTION PLAN

WA-SPS-000112



Saturday, July 8, 2023

0700-0700

Maps, IAP



Fire Codes

DNR 221-PAK



USFS PNQBP5-1502

Notes

Notes



INCIDENT OBJECTIVES (ICS 202)

1. Incident Name:		2. Operational Period: ALL SHIFTS	
MCEWAN		Date/Time From: 07/08/2023 0700 SAT	Date/Time To: 07/09/2023 0700 SUN
3. Objective(s):			
<ul style="list-style-type: none"> Provide for the safety of Incident Responders and the public by utilizing a risk management process. Minimize acres burned. Manage for full suppression. Utilize strategies and tactics that have a high probability of achieving containment Provide timely information to Assisting and Cooperating agencies; and the public, as appropriate. Operate in a cost-effective manner unless doing so negatively impacts safe operations and/or significantly impacts operational efficiency 			
4. Operational Period Command Emphasis:			
Safely work to protect life, property, critical infrastructure, and the environment while mitigating the fire problem.			
Emphasis is on safety in hot environment.			
General Situational Awareness:			
5. Site Safety Plan Required? Yes <input type="checkbox"/> No <input checked="" type="checkbox"/>			
Approved Site Safety Plan(s) Located			
6. Incident Action Plan (the items checked below are included in this Incident Action Plan):			
<input checked="" type="checkbox"/> ICS 202	<input type="checkbox"/> ICS 207	Other Attachments: <input type="checkbox"/> _____ <input type="checkbox"/> _____ <input type="checkbox"/> _____ <input type="checkbox"/> _____	
<input checked="" type="checkbox"/> ICS 203	<input checked="" type="checkbox"/> ICS 208		
<input checked="" type="checkbox"/> ICS 204	<input type="checkbox"/> ICS 220		
<input checked="" type="checkbox"/> ICS 205	<input checked="" type="checkbox"/> Map/Chart		
<input type="checkbox"/> ICS 205A	<input checked="" type="checkbox"/> Weather Forecast/Tides/Currents		
<input checked="" type="checkbox"/> ICS 206			
7. Prepared by: BRAD READING	Position/Title: PSC3	Signature: 	
8. Approved by Incident Commander:	Name: KENT STANFORD	Signature: 	
ICS 202	IAP Page	Date/Time: 07/07/2023 1800	

MCEWAN

National Weather Service Seattle

2023-07-07 3:03 PM PDT

Spot Forecast for MCEWAN...WWIMT
 National Weather Service Seattle WA
 303 PM PDT Fri Jul 7 2023

Forecast is based on forecast start time of 1800 PDT on July 07.
 If conditions become unrepresentative, contact the National Weather Service.

Please contact our office at (206) 526-6095, if you have questions or concerns with this forecast.

.DISCUSSION...An onshore flow pattern will continue through Sunday. This will promote increased RH recoveries during the period, with low stratus clouds each morning, clearing for some sunshine in the afternoon. Southwest winds will be the dominant wind direction through Sunday as well, peaking each afternoon and evening, with potential gusts ranging 15 to 20 MPH during the period.

.TONIGHT...

Sky/weather.....Mostly clear, becoming cloudy after midnight.
 CWR.....0 percent.
 LAL.....1.
 Min temperature....Around 51.
 Max humidity.....95 percent.
 Wind (20 ft).....Southwest winds 7 to 14 mph, easing to 5 to 9 mph after midnight. Gusts to 15 to 20 MPH possible this evening.
 Mixing height.....500 ft AGL.
 Transport winds....West around 11 mph.
 Haines Index.....4 or low potential for large plume dominated fire growth.
 Rainfall amount.....0.00 inches.

.SATURDAY...

Sky/weather.....Mostly cloudy then becoming sunny in the afternoon.
 CWR.....0 percent.
 LAL.....1.
 Max temperature....Around 77.
 Min humidity.....48 percent.
 Wind (20 ft).....Southwest winds 5 to 9 mph in the morning increasing to 7 to 12 mph in the afternoon.
 Mixing height.....3000 ft AGL.
 Transport winds....Southwest around 9 mph.
 Haines Index.....5 or moderate potential for large plume dominated fire growth.
 Rainfall amount.....0.00 inches.

.SATURDAY NIGHT...

Sky/weather.....Clear then becoming mostly cloudy.
 CWR.....0 percent.
 LAL.....1.
 Min temperature....Around 49.
 Max humidity.....100 percent.
 Wind (20 ft).....Southwest winds 7 to 14 mph in the evening easing to 2 to 6 mph after midnight. Gusts to 15 to 20 MPH possible this evening.

Mixing height.....500 ft AGL.
 Transport winds.....West around 10 mph.
 Haines Index.....5 or moderate potential for large plume
 dominated fire growth.
 Rainfall amount.....0.00 inches.

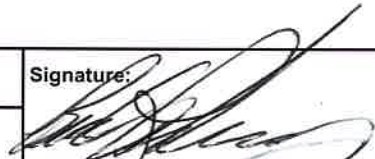
.SUNDAY...

Sky/weather.....Mostly cloudy in the morning then becoming
 sunny.
 CWR.....0 percent.
 LAL.....1.
 Max temperature....Around 79.
 Min humidity.....46 percent.
 Wind (20 ft).....Southwest winds around 6 mph.
 Mixing height.....2900 ft AGL.
 Transport winds.....Southwest winds 3 to 6 mph in the morning
 increasing to 6 to 10 in the afternoon.
 Haines Index.....4 or low potential for large plume
 dominated fire growth.
 Rainfall amount.....0.00 inches.

\$\$

Forecaster...DeFlitch
 Requested by...Brad Reading
 Type of request...WILDFIRE
 .TAG 2316381.3/SEW
 .DELDT 07/07/23
 .FormatterVersion 2.0.0
 .EMAIL brad_reading@firenet.gov

ORGANIZATION ASSIGNMENT LIST (ICS 203)

1. Incident Name:		2. Operational Period: ALL SHIFTS	
MCEWAN		Date/Time From: 07/08/2023 0700 SAT	Date/Time To: 07/09/2023 0700 SUN
3. Incident Commander(s) and Command Staff:		6. Logistics Section:	
IC/UC	STANFORD, KENT	CHIEF	GRIFFIN, TODD
DEPUTY		DEPUTY	
SAFETY OFFICER	BROWN, MARSHALL	SUPPLY UNIT	
LIAISON OFFICER	MCKERN, TIMOTHY MICHAEL STRONG, PAUL M (T)	FACILITIES UNIT	PREVOST, MICHAEL R
INFORMATION OFFICER	HULD, IVAN BROCK, NORMA	GROUND SUPPORT UNIT	
4. Agency/Organization Representative(s):		COMMUNICATIONS UNIT	
Agency/Organization	Name	MEDICAL UNIT	ENGLE, STEVEN PHILLIP RAHIER, THERON BRADLEY (T)
WA-DNR	MELTON, DON	SECURITY UNIT	
MASON COUNTY SHERIFF	SEVERANCE, TREVOR	FOOD UNIT	
MASON COUNTY FIRE DISTRICT #5	SNYDER, JEFF SEARLES, BRANDON	7. Operations Section:	
GREEN DIAMOND TIMBER	MAGALSKA, LAUREN	DAY OPS SECTION CHIEF	BURNS, CHARLEY
MASON COUNTY EMERGENCY MANAGEMENT	TAYLOR, JOHN	NIGHT OPS SECTION CHIEF	
SHELTON SCHOOL DISTRICT	HERRON, ROBERT	PLANNING OPS	WESTLAKE, STEVE
BONNEVILLE POWER ADMINISTRATION	OLEARY, MARY BETH SYKORA, MONICA	OPS SECTION CHIEF	
CASCADE NATURAL GAS	MATHEWS, CLINT JENKINS, CHUCK	DEPUTY OPS SECTION CHIEF	
MASON COUNTY PUD 3	EATON, LYNN CORSON, SHEILA	STAGING AREA	
		DIVISION/GROUP A	LIVDAHL, JASON
		DIVISION/GROUP Z	HEIDAL, DALE EDWARD
		DIVISION/GROUP STAGING	TBD
		DIVISION/GROUP NIGHTS	BERRYMAN, TOM
5. Planning Section:		7b. Air Operations Branch:	
CHIEF	READING, BRAD	AIR OPS BRANCH DIRECTOR	
DEPUTY		AIR ATTACK SUPERVISOR	
RESOURCES UNIT		AIR SUPPORT SUPERVISOR	
SITUATION UNIT	COX, LAURIE	HELICOPTER COORDINATOR	
DOCUMENTATION UNIT		AIR TANKER COORDINATOR	
DEMOBILIZATION UNIT	KOEHLER, SCOTT	8. Finance/Administration Section:	
FIRE BEHAVIOR ANALYST		CHIEF	PRICE, LORI
HUMAN RESOURCE SPECIALIST		DEPUTY	
TRAINING SPECIALIST		TIME UNIT	
GIS SPECIALIST		PROCUREMENT UNIT	JAMES, PAULA
TECHNOLOGY SUPPORT SPECIALIST		COMPENSATION UNIT	
INCIDENT METEOROLOGIST		COST UNIT	
ITSS	DAVID BISHOP		
9. Prepared By:	Name: BRAD READING	Position/Title: PSC	Signature: 
ICS 203	IAP Page	Date/Time: 07/07/2023 1800	

4/19

Division/Group Assignment List (ICS 204 WF)

Controlled Unclassified Information//Basic

1. Incident Name:			3.			
MCEWAN			Branch:		Division/Group	
2. Operational Period: ALL SHIFTS						
Date/Time From: 07/08/2023 0700 SAT		Date/Time To: 07/09/2023 0700 SUN		A		
4. Operations Personnel						
OPERATIONS CHIEF		CHARLEY BURNS		DIVISION/GROUP SUPERVISOR		LIVDAHL, JASON
5. Resources Assigned this Period						
Strike Team / Task Force / Resource Designator		LWD	Leader	Number Persons	Drop Off PT./Time	Pick Up PT./Time
C2 CREW GRIZZLY			ORTIZ	20		
C3 CR2I - NW - NES - NORTH COLUMBIA - DNR			OLSON	21		
SOUTH PUGET STRIKE TEAM			WARD	16		
E14 ENG6 - STEELHEAD ENTERPRISES LLC		07/18	MALVIN, JOSEPH	3		
E11 ENG6 METHOW RIVER			PETO	3		
E12 ENG6 LATE SUMMER			ETTENHOFER	3		
E16 ENG6 FRANCO REFORT.			HUGY	3		
E18 ENG6 BLACKSTONE FORESTRY		07/18	THOMAS	3		
6. Control Operations/Work Assignments:						
<p>Task: Hold and improve lines. Protect values at risk. Enhance direct lines to minimize fire spread/continue mop-up of perimeter to standards.</p> <p>Purpose: Contain the fire when minimizing acres burned. Minimize fire size and reduce spread potential that would adversely impact structures/infrastructure improvements.</p> <p>End State: Structures and critical infrastructure protected. Fire contained with strategies commensurate with risk while minimizing acres burned. Keep fire east of John's Creek development. Keep fire north and west of BPA powerlines. Keep fire west of Rainbow Lake development.</p>						
7. Special Instructions:						
Ensure LCES before engaging. Identify hazard trees for isolation and felling operations.						
8. Division/Group Communication Summary						
Function	Channel	RX Frequency N/W	RX Tone/NAC	TX Frequency N/W	TX Tone/NAC	Mode
COMMAND	1	159.3150	127.3	151.1750	127.3	A
TACTICAL	3	151.3100	192.8	1513100	192.8	A
AIR TO GROUND	13	159.2700	103.5	159.2700	103.5	A
AIR GUARD	16	168.6250		168.6250	110.9	A
9. Prepared By (Resource Unit Leader)			Approved By (Planning Section Chief)		Date	Time
BRAD READING			BRAD READING		07/07/2023	1800

5/19


Division/Group Assignment List (ICS 204 WF)

Controlled Unclassified Information//Basic

1. Incident Name:			3.			
MCEWAN			Branch:		Division/Group Z	
2. Operational Period: ALL SHIFTS						
Date/Time From: 07/08/2023 0700 SAT		Date/Time To: 07/09/2023 0700 SUN				
4. Operations Personnel						
OPERATIONS CHIEF		CHARLEY BURNS		BRANCH DIRECTOR		
DIVISION/GROUP SUPERVISOR		HEIDEL		AIR ATTACK SUPERVISOR		
5. Resources Assigned this Period						
Strike Team / Task Force / Resource Designator		LWD	Leader	Number Persons	Drop Off PT./Time	Pick Up PT./Time
0-47 TFL CORK			CORK	1		
C1 GRIZZLY CREW			FERNANDO	20		
CEDAR CREEK CREW			ALEXANDER	11		
SW STRIKE TEAM			GOBLE	15		
E15 ENG6 DESCHUTES U-BOAT			DAMES	3		
E13 ENG6 LIBEERTY WILDFIRE			MIDDLETON	3		
E10 ENG6 NORTHRIDGE WILDFIRE		07/18	BECK	1		
E17 ENG6 - FIREMOG, LLC		07/19	STULTZ, KEVIN	3		
E9 ENG6 - METHOW RIVER WILD FIRE		07/19	MUNOZ	3		
6. Control Operations/Work Assignments:						
Task:						
Hold and improve lines.						
Protect values at risk.						
Enhance direct lines to minimize fire spread/continue mop-up of perimeter to standards.						
Purpose:						
Contain the fire when minimizing acres burned.						
Minimize fire size and reduce spread potential that would adversely impact structures/infrastructure improvements.						
End State:						
Structures and critical infrastructure protected.						
Fire contained with strategies commensurate with risk while minimizing acres burned.						
Keep fire south of East McEwan Prairie Road.						
7. Special Instructions:						
Ensure LCES before engaging.						
Identify hazard trees for isolation and felling operations.						
8. Division/Group Communication Summary						
Function	Channel	RX Frequency N/W	RX Tone/NAC	TX Frequency N/W	TX Tone/NAC	Mode
COMMAND	1	159.3150	127.3	151.1750	127.3	A
TACTICAL	4	151.3400	192.8	151.3400	192.8	A
AIR TO GROUND	13	159.2700	103.5	159.2700	103.5	A
AIR GUARD	16	168.6250		168.6250	110.9	A
9. Prepared By (Resource Unit Leader)			Approved By (Planning Section Chief)		Date	Time
BRAD READING			BRAD READING		07/07/2023	1800


6/19

Division/Group Assignment List (ICS 204 WF)
Controlled Unclassified Information//Basic

1. Incident Name:			3.			
MCEWAN			Branch:		Division/Group	
2. Operational Period: ALL SHIFTS					STAGING	
Date/Time From: 07/08/2023 0700 SAT		Date/Time To: 07/09/2023 0700 SUN				
4. Operations Personnel						
OPERATIONS CHIEF		CHARLEY BURNS		BRANCH DIRECTOR		
DIVISION/GROUP SUPERVISOR				AIR ATTACK SUPERVISOR		
5. Resources Assigned this Period						
Strike Team / Task Force / Resource Designator		LWD	Leader	Number Persons	Drop Off PT./Time	Pick Up PT./Time
DOZER T-2			WATSON	1		
EXCAVATOR			GOLDIE	1		
TREE SERVICE			MONTE	2		
HEQB			WOODS	1		
MASTICATOR-MONTY'S TREE SERVICE		07/19		1		
E38 WTS2 EASTSIDE FIRE			HOTCHKISS	1		
025 HEQB			LIM, TERRY	1		
6. Control Operations/Work Assignments:						
<p>Task: Hold and improve lines. Protect values at risk. Construct direct lines to minimize fire spread.</p> <p>Purpose: Contain the fire when minimizing acres burned. Minimize fire size and reduce spread potential that would adversely impact structures/infrastructure improvements.</p> <p>End State: Structures and critical infrastructure protected. Fire contained with strategies commensurate with risk while minimizing acres burned.</p>						
7. Special Instructions:						
Ensure LCES before engaging. Identify hazard trees for isolation and felling operations.						
8. Division/Group Communication Summary						
Function	Channel	RX Frequency N/W	RX Tone/NAC	TX Frequency N/W	TX Tone/NAC	Mode
COMMAND	1	159.3150	127.3	151.1750	127.3	A
COMMAND	2	159.2550	114.8	151.2050	114.8	A
TACTICAL	3	151.3100	192.8	151.3100	192.8	A
TACTICAL	4	151.3400	192.8	151.3400	192.8	A
9. Prepared By (Resource Unit Leader)			Approved By (Planning Section Chief)		Date	Time
BRAD READING			BRAD READING 		07/07/2023	1800

7/19

Division/Group Assignment List (ICS 204 WF)
 Controlled Unclassified Information//Basic

1. Incident Name:			3.			
MCEWAN			Branch:		Division/Group	
2. Operational Period: ALL SHIFTS					NIGHT	
Date/Time From: 07/08/2023 0700 SAT		Date/Time To: 07/09/2023 0700 SUN				
4. Operations Personnel						
OPERATIONS CHIEF		CHARLEY BURNS		BRANCH DIRECTOR		
DIVISION/GROUP SUPERVISOR		BERRYMAN, TOM		AIR ATTACK SUPERVISOR		
5. Resources Assigned this Period						
Strike Team / Task Force / Resource Designator		LWD	Leader	Number Persons	Drop Off PT./Time	Pick Up PT./Time
TFLD BERRYMAN			BERRYMAN, TOM	1		
E-2376 HOODSPORT FIRE				3		
E-2377 MCFD6				2		
E-2378 PCFD3				2		
E-2379 VALLEY REGIONAL				3		
6. Control Operations/Work Assignments:						
<p>Task: Hold and improve lines. Protect values at risk. Construct direct lines to minimize fire spread.</p> <p>Purpose: Contain the fire when minimizing acres burned. Minimize fire size and reduce spread potential that would adversely impact structures/infrastructure improvements.</p> <p>End State: Structures and critical infrastructure protected. Fire contained with strategies commensurate with risk while minimizing acres burned.</p>						
7. Special Instructions:						
Ensure LCES before engaging. Identify hazard trees for isolation and felling operations.						
8. Division/Group Communication Summary						
Function	Channel	RX Frequency N/W	RX Tone/NAC	TX Frequency N/W	TX Tone/NAC	Mode
COMMAND	1	159.3150	127.3	151.1750	127.3	A
COMMAND	2	159.2550	114.8	151.2050	114.8	A
TACTICAL	3	151.3100	192.8	1513100	192.8	A
TACTICAL	4	151.3400	192.8	151.3400	192.8	A
9. Prepared By (Resource Unit Leader)			Approved By (Planning Section Chief)		Date	Time
BRAD READING			BRAD READING 		07/07/2023	1800

8/19



HEALTH AND SAFETY MESSAGE

Western Washington Incident Management Team

INCIDENT: McEwan

DATE: 7/8/2022

Hazard Trees

If you are working in timbered areas that contain hazard trees, develop habits of observing the ground and inspecting the trees you are working around. Trees do not have to be large or dead to fall, strike, and severely injure people. Green, healthy-looking trees can also fall and hurt people. If you are unsure of the indicators of hazard trees, talk with someone who is.

Indicators

- Look for structural integrity (breakage, shallow roots, open canopy)
- Look for signs of damage or injury (foliage discoloring, rot, insect activity, fire scars)
- Look for shallow or loose soil or exposed roots
- Pay attention to changing weather conditions, especially wind

Mitigations

- Scout work area and identify safe and unsafe work sites
- Use professional cutters or heavy equipment to remove hazard trees from work area
- Minimize exposure of resources to the hazard
- Avoid high-hazard areas or develop alternative tactics for those areas
- Maintain situational awareness during the entire work period

Safety Officer: Marshall Brown

9/19

MEDICAL PLAN (ICS 206 WF)

Incident/Project Name		Operational Period					
MCEWAN		Date/Time 07-8-2023 07:00 to 07:00					
Ambulance Services							
Name	Complete Address	Phone & EMS Frequency	Advanced Life Support (ALS)				
			Yes	No			
Central Mason Fire & EMS	122 W Franklin St, Shelton WA	911	x				
Air Ambulance Services							
Name	Phone	Type of Aircraft & Capability					
Airlift Northwest	911 (1-800-426-2430)	Rotor					
Life Flight	911 (1-800-232-0911)	Rotor					
Hospitals							
Name Complete Address	GPS Datum – WGS 84 DD° MM.MMM' N – Lat DD° MM.MMM' W – Long		Travel Time from ICP		ER Phone	Helipad Yes No	Level of Care Facility
	Lat	Long	Air	Ground			
Mason General 901 Mountain View Drive Shelton, WA	47.224816	-123.112374	N/A	10m	360-426-8171	X	Level 4 Trauma Center
Providence St. Peters 413 Lilly RD NE Olympia, WA	47.0522	122.8476	15m	35m	360-438-6666	X	Level 3 Trauma Center
Harborview Medical Center 325 9 th Ave, Seattle, WA	47° 36.190'	122° 19.500	25m	1hr 45m	206-744-3000	X	Level 1 Trauma Burn Center
Division Branch Group		Area Location Capability					
MEDL Contact Number		Steven Engle	360-731-9476				
MEDL-T Contact Number		Theron Rahier	360-265-9036				

DIV Alpha & Zulu	EMS Responders & Capability	Line EMT Kacey-BLS Equipment Line Medic Tyler-ALS Equipment		
	Equipment Available on scene	BLS/ALS		
	Medical Emergency Channel	Command 1 (Mcewan)		
	Approximate Response Times from ICP to Division	10m		
	TRANSPORT TIMES FROM DIVISION TO CLOSEST HOSPITAL	10m		
	Approved Heli Spot	Mason General Hospital Helipad		
	Lat	47.224816		
	Long	-123.112374		

Prepared by (Medical Unit Leader)	Date/Time	Approved by (Safety Officer)	Date/Time
Theron Rahier MEDL-t	07-07-2023	Marshall Brown	07-07-2023

In case of an urgent medical emergency (Yellow or Red), Establish an IC for the IWI and follow your Medical Incident Report and contact MCEWAN Communications on Command. Daily- Establish your PACE (Primary, Alternative, Contingency, Emergency) model for medical emergency extraction.

10/19

LOGS

Caterer located in the large soccer fields, just east from the baseball and softball fields. Baseball and softball fields are off-limits.

Breakfast: 0600-0900

Lunch: Can be picked up during breakfast hours near the Sysco trailer. Ice available at this location.

Dinner: 1830-2130

Bottled water and Gatorade available to fire folks, located outside the "Mini Dome" gym.

Showers: Available 24/7, located in the large gym titled "Mini Dome". NO BOOTS within the gym. Must have your own shower supplies.

Communications: Located within the print trailer in the morning briefing area. Hand held radios are available and radios can be cloned there.

12/19

FINANCE MESSAGE

PLEASE EMAIL DOCUMENTATION TO

2023.mcewan.finance@firenet.gov

**PLEASE HAVE ALL CTRS AND SHIFT TICKETS
SIGNED BEFORE SUBMITTING**

DOCUMENTATION NEEDED

OVERHEAD

Resource Order
CTRs

ADS & STATE CASUAL HIRES

Resource Order
Casual Hire Form
CTRs

ENGINES

Resource Order
Manifest
CTRs

CREWS

Resource Order
Manifest
CTRs
Agreement (Cooperator or Contractor)

AGENCY CREWS WITH ADS

Resource Order
Manifest with AD Rates
CTRs

EQUIPMENT CONTRACTORS

Please complete incident check-in prior to checking in with finance

Resource Order
Copy of Agreement
Vehicle Pre-Inspection Sheet
Completed signed shift tickets

Western Washington Incident Management

TYPE III HR Message

Why Is Mutual Respect Important?

A lack of respect makes working in harmony with crew members difficult, if not impossible. It often leads to negative behaviors, such as name-calling, gossip, and bullying. That's why it's important to build mutual respect into your crew operating expectations. Every workplace consists of people with different personality traits, which can lead to misunderstandings, disagreements, and conflict. But with a foundation of mutual trust and respect, the unique contributions of each team member are valued and needed. When you have disputes work to handle them respectfully.

How to Practice Mutual Respect in the Workplace

- **Celebrate the unique contributions of each crew member.** One of the best ways to make crew members feel respected is to affirm the value they bring to the crew. This can help encourage better teamwork and instill a greater sense of self-respect in your coworkers.
- **Practice active listening.** Active listening is paramount in every good relationship. It involves giving your full attention to a person who is speaking. Being a good listener is a highly valued interpersonal skill for crew leaders and overhead.
- **Find common ground with your coworkers.** You may not agree with everything your coworkers say or decide to do, but mutual respect includes finding common ground and treating others with respect. A crucial aspect of this is being able to collaborate with those who share different viewpoints, personality traits, and backgrounds.
- **Report negative behavior to human resources.** Disparaging remarks about religion, sexual orientation, ethnicity, or physical ability are not only disrespectful but could violate anti-discrimination laws. If you witness bullying or disrespectful behavior, report it to any member of the management team. By doing so, you're showing respect to the affected coworker.

14/19

McEwan WA-SPS-000112 IAP Map

07/07/2023 Day Shift
244 acres at 07/05/2023 @ 0600

- () Division Break
- Drop Point
- Staging Area
- Fire Station
- Structures
- ⊗ Completed Dozer Line
- Completed Hand Line
- Uncontained Fire Edge
- Highway
- Primary Road
- Light-Duty Road
- Unimproved Road
- Closed Road
- Railroad
- Fire Area



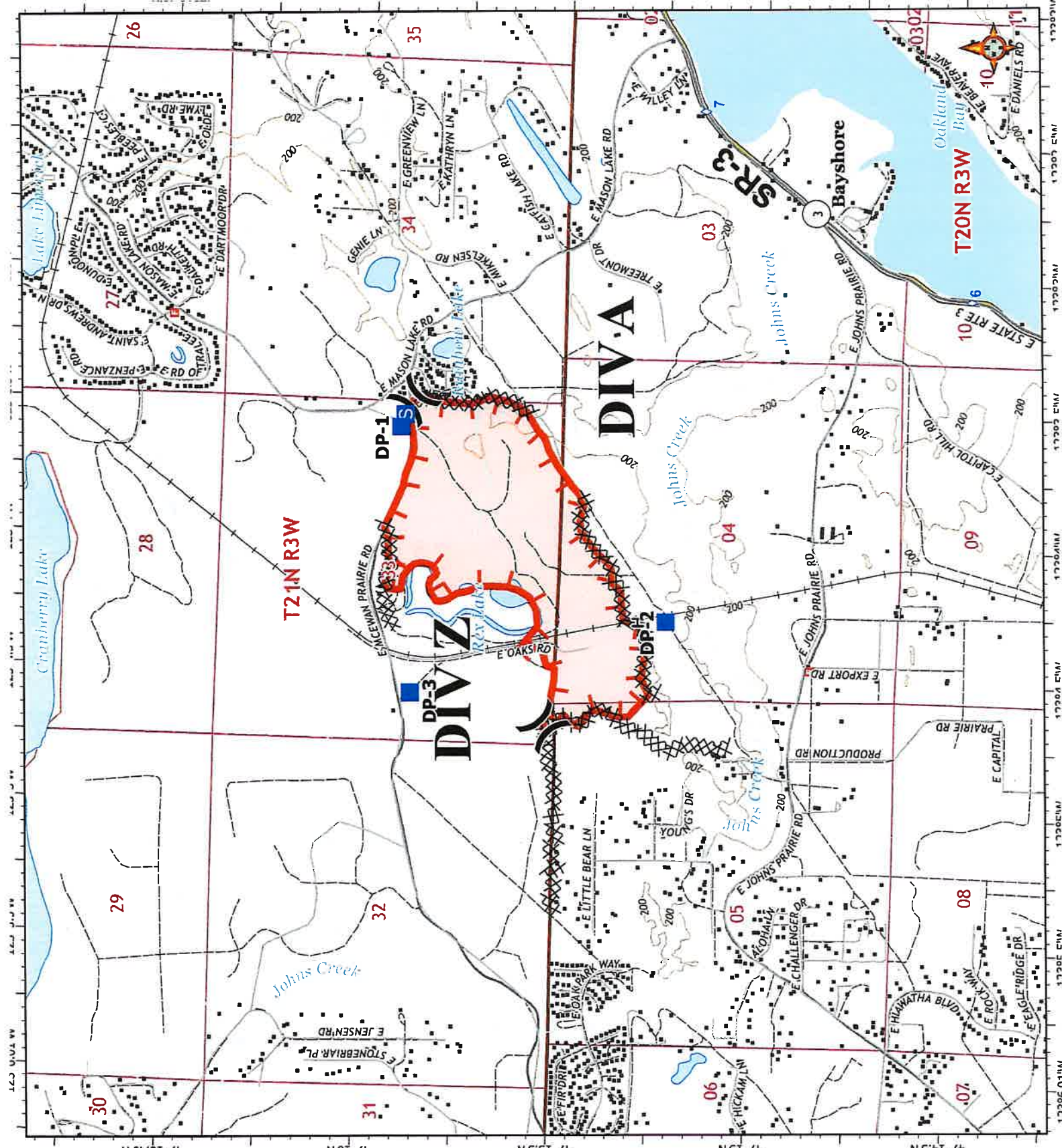
0 0.25 0.5
Miles

S. Bushnell
07/06/23
1521 Hours

Acres from sketch

Datum: North American 1983 HARN

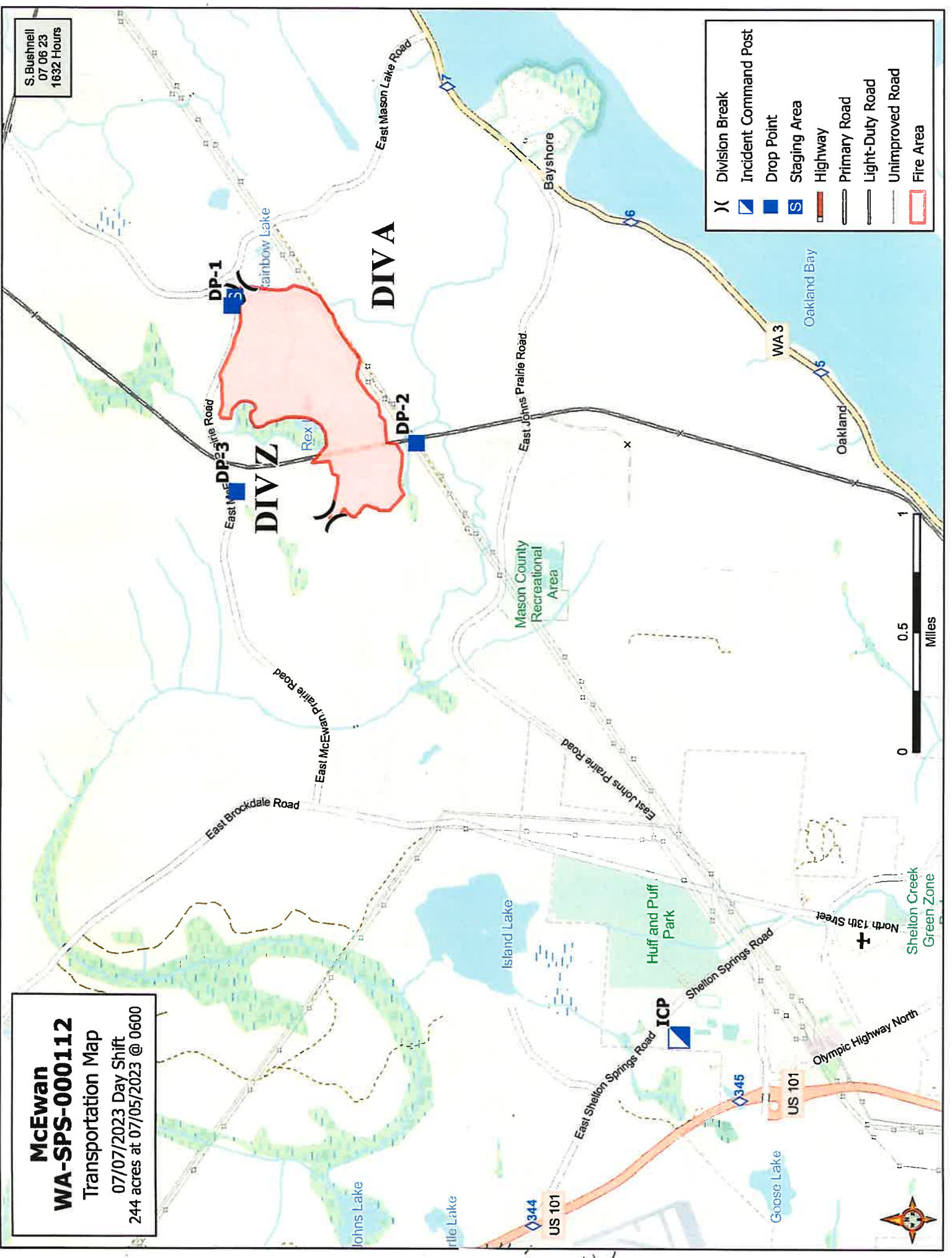
6/15/21



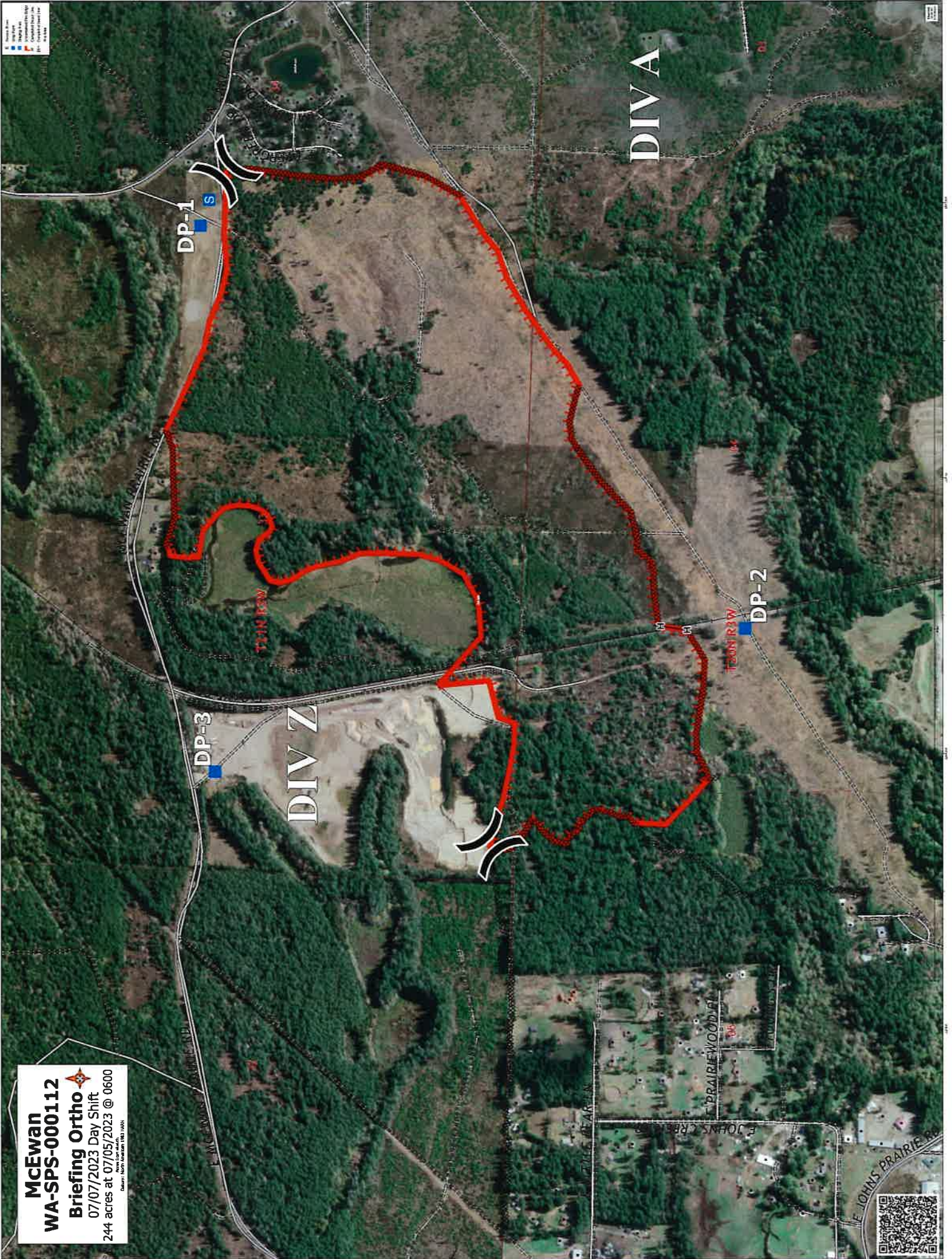
S. Bushnell
07 06 23
1632 Hours

McEwan
WA-SPS-000112
Transportation Map
07/07/2023 Day Shift
244 acres at 07/05/2023 @ 0600

(X)	Division Break
▣	Incident Command Post
■	Drop Point
■	Staging Area
S	Highway
▬	Primary Road
▬	Light-Duty Road
▬	Unimproved Road
▭	Fire Area



16/19



McEwan
WA-SPS-000112
Briefing Ortho
07/07/2023 Day Shift
244 acres at 07/05/2023 @ 0600

© 2023 North American VNA LLC

17/19



- 1. Parcel Line
- 2. Property Line
- 3. Easement
- 4. Contour Line
- 5. Boundary Line

DIVA

DIV Z

DP-1

DP-2

DP-3

TECON R2W

TECON R2W

E PRAIRIEWOOD

E JOHNS CREEK

E JOHNS PRAIRIE

MEDICAL PLAN (ICS 206 WF)

Controlled Unclassified Information//Basic

Medical Incident Report

FOR A NON-EMERGENCY INCIDENT, WORK THROUGH CHAIN OF COMMAND TO REPORT AND TRANSPORT INJURED PERSONNEL AS NECESSARY.

FOR A MEDICAL EMERGENCY: IDENTIFY ON-SCENE INCIDENT COMMANDER BY NAME AND POSITION AND ANNOUNCE "MEDICAL EMERGENCY" TO INITIATE RESPONSE FROM IMT COMMUNICATIONS/DISPATCH.

Use the following items to communicate situation to communications/dispatch.

1. CONTACT COMMUNICATIONS / DISPATCH (Verify correct frequency prior to starting report)

Ex: "Communications, Div. Alpha. Stand-by for Emergency Traffic."

2. INCIDENT STATUS: Provide incident summary (including number of patients) and command structure.

Ex: "Communications, I have a Red priority patient, unconscious, struck by a falling tree. Requesting air ambulance to Forest Road 1 at (Lat./Long.) This will be the Trout Meadow Medical, IC is TFLD Jones. EMT Smith is providing medical care."

Severity of Emergency / Transport Priority	<input type="checkbox"/> RED / PRIORITY 1 Life or limb threatening injury or illness. Evacuation need is IMMEDIATE <i>Ex: Unconscious, difficulty breathing, bleeding severely, 2° - 3° burns more than 4 palm sizes, heat stroke, disoriented.</i> <input type="checkbox"/> YELLOW / PRIORITY 2 Serious Injury or illness. Evacuation may be DELAYED if necessary. <i>Ex: Significant trauma, unable to walk, 2° - 3° burns not more than 1-3 palm sizes.</i> <input type="checkbox"/> GREEN / PRIORITY 3 Minor Injury or illness. Non-Emergency transport <i>Ex: Sprains, strains, minor heat-related illness.</i>	
Nature of Injury or Illness & Mechanism of Injury		Brief Summary of Injury or Illness <i>(Ex: Unconscious, Struck by Falling Tree)</i>
Evacuation Request		Air Ambulance / Short Haul/Hoist Ground Ambulance / Other
Patient Location		Descriptive Location & Lat. / Long. (WGS84)
Incident Name		Geographic Name + Medical <i>(Ex: Trout Meadow Medical)</i>
On-Scene Incident Commander		Name of on-scene IC of Incident within an Incident <i>(Ex: TFLD Jones)</i>
Patient Care		Name of Care Provider <i>(Ex: EMT Smith)</i>

3. INITIAL PATIENT ASSESSMENT: Complete this section for each patient as applicable (start with the most severe patient)

Patient Assessment: See IRPG PAGE 106

Treatment:

4. EVACUATION PLAN:

Evacuation Location (if different): (Descriptive Location (drop point, intersection, etc.) or Lat. / Long.) Patient's ETA to Evacuation Location:

Helispot / Extraction Site Size and Hazards:

5. ADDITIONAL RESOURCES / EQUIPMENT NEEDS:

Example: Paramedic/EMT, crews, immobilization devices, AED, oxygen, trauma bag, IV/fluid(s), splints, rope rescue, wheeled litter, HAZMAT, extrication

6. COMMUNICATIONS: Identify State Air/Ground EMS Frequencies and Hospital Contacts as applicable

Function	Channel Name/Number	Receive (RX)	Tone/NAC *	Transmit (TX)	Tone/NAC *
COMMAND					
AIR-TO-GRND					
TACTICAL					

7. CONTINGENCY: Considerations: If primary options fail, what actions can be implemented in conjunction with primary evacuation method? Be thinking ahead..

8. ADDITIONAL INFORMATION: Updates/Changes, etc.

REMEMBER: Confirm ETAs of resources ordered. Act according to your level of training. Be Alert. Keep Calm. Think Clearly. Act Decisively.

14/19