
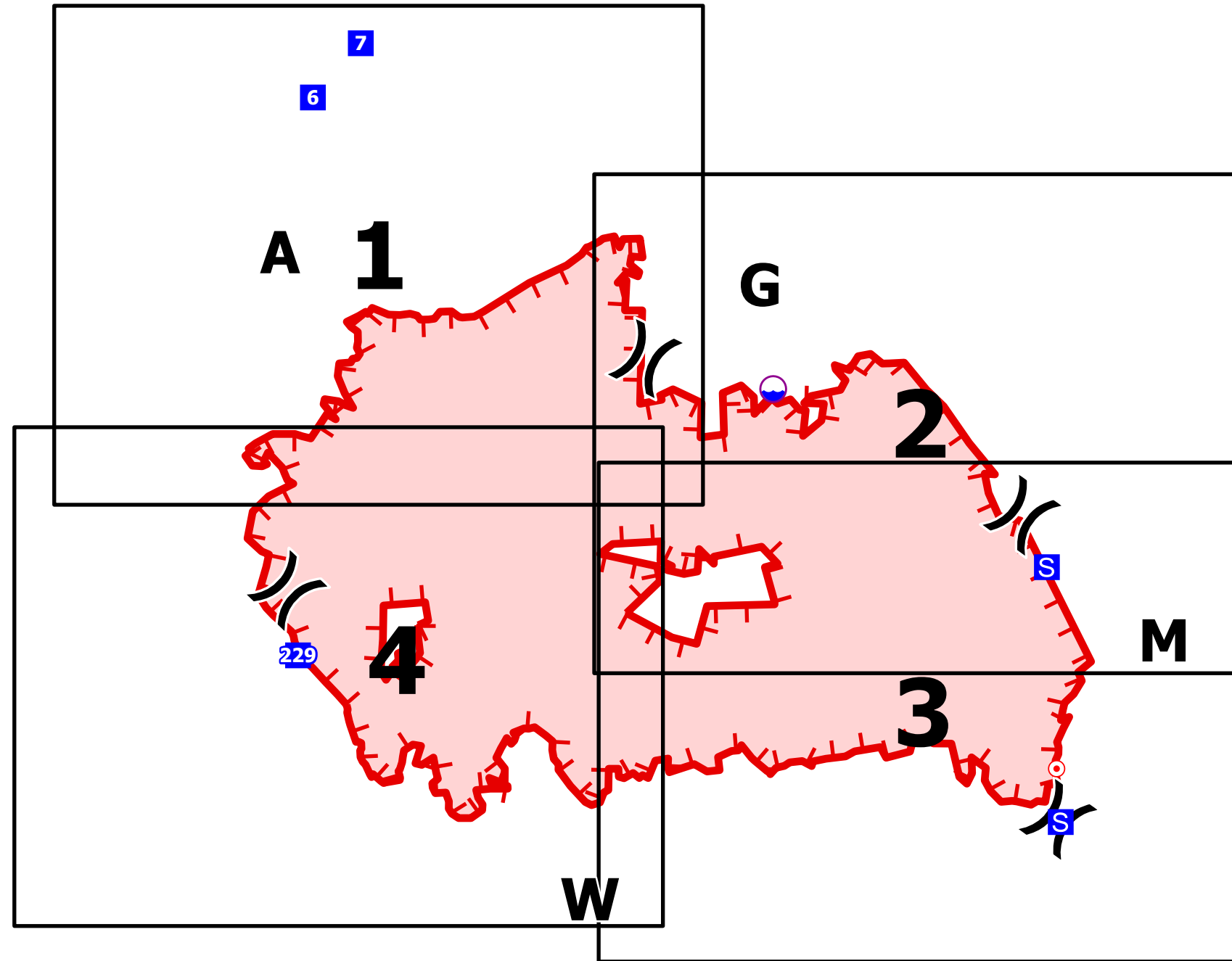


# IAP Index

Newell Road  
WA-SES-000464  
7/24/2023 Day

52,034 acres at 7/23/2023 @ 0913

-  Dip Site
-  Helispot
-  Division Break
-  Drop Point
-  Staging Area
-  Hot Spot - Spot Fire
-  Uncontained



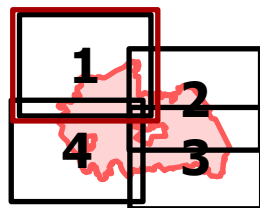
BPA  
7/23/2023 2025  
Acres from IR and GPS  
North American 1983 Datum. LatLong  
Grid



# IAP

Newell Road  
WA-SES-000464  
7/24/2023 Day

52,034 acres at 7/23/2023 @ 0913

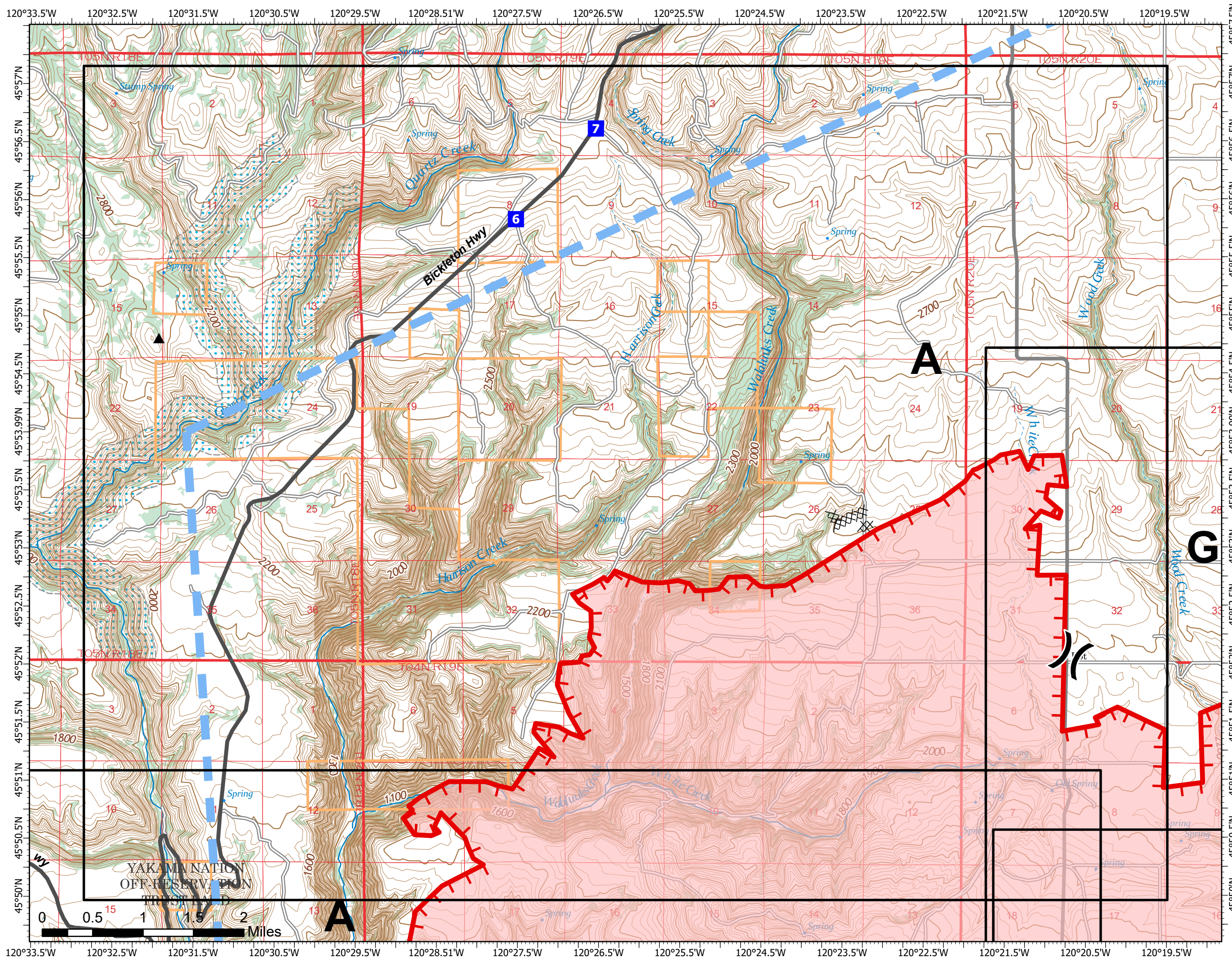


Page 1 of 4

- ( ) Division Break
- Drop Point
- ⊗⊗ Completed Dozer Line
- ▬ Temporary Flight Restriction
- ▬ Uncontained



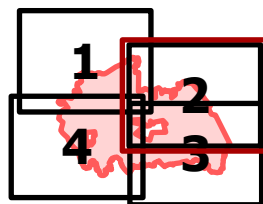
7/23/2023 2030  
Acres from IR and GPS  
North American 1983 Datum, LatLong  
Grid



# IAP

Newell Road  
WA-SES-000464  
7/24/2023 Day

52,034 acres at 7/23/2023 @ 0913

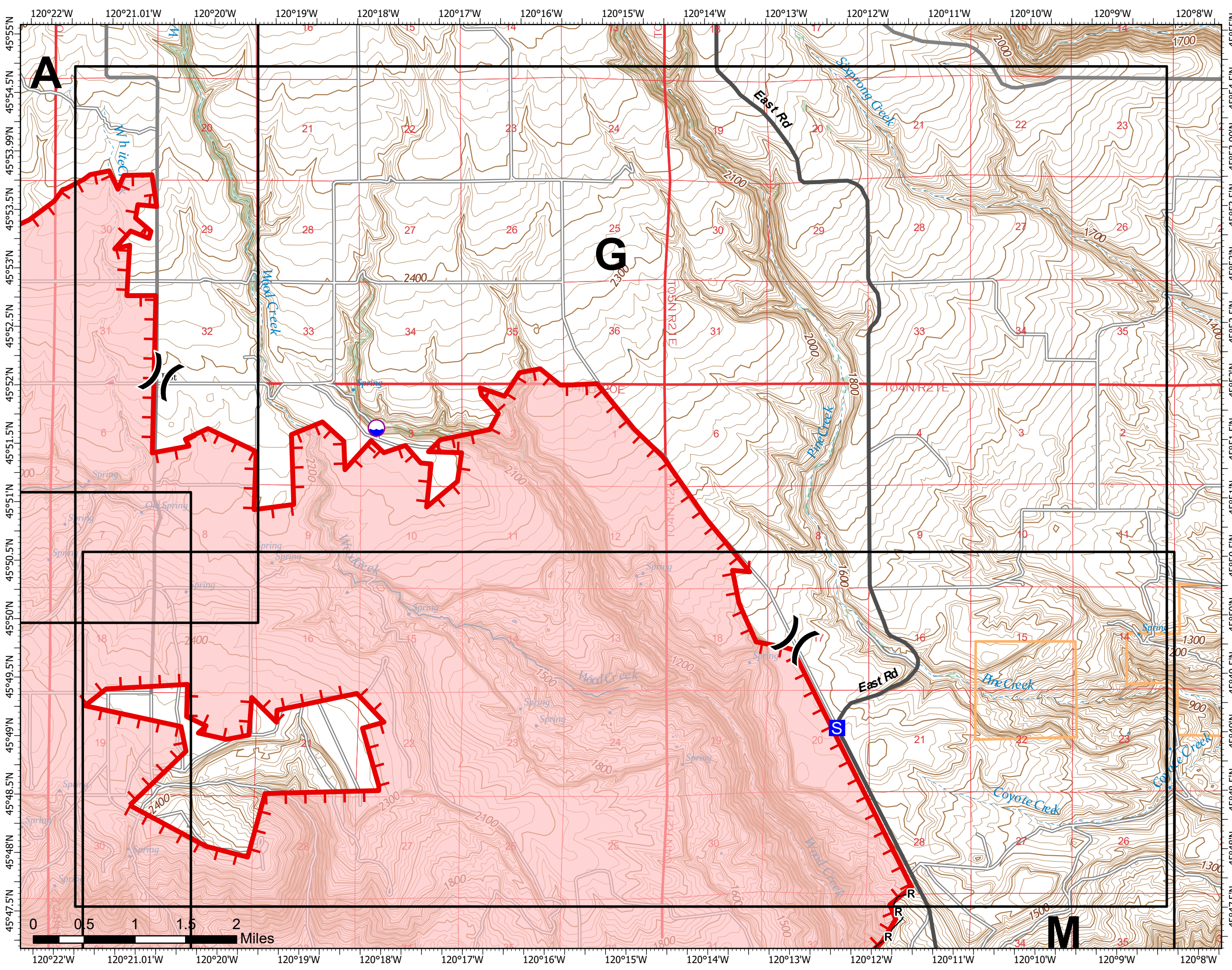


Page 2 of 4

- Dip Site
- Division Break
- Staging Area
- Completed Road as Line
- Uncontained



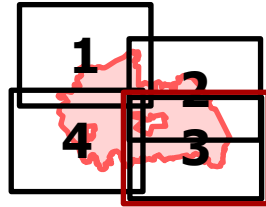
7/23/2023 2030  
Acres from IR and GPS  
North American 1983 Datum. LatLong  
Grid



# IAP

Newell Road  
WA-SES-000464  
7/24/2023 Day

52,034 acres at 7/23/2023 @ 0913

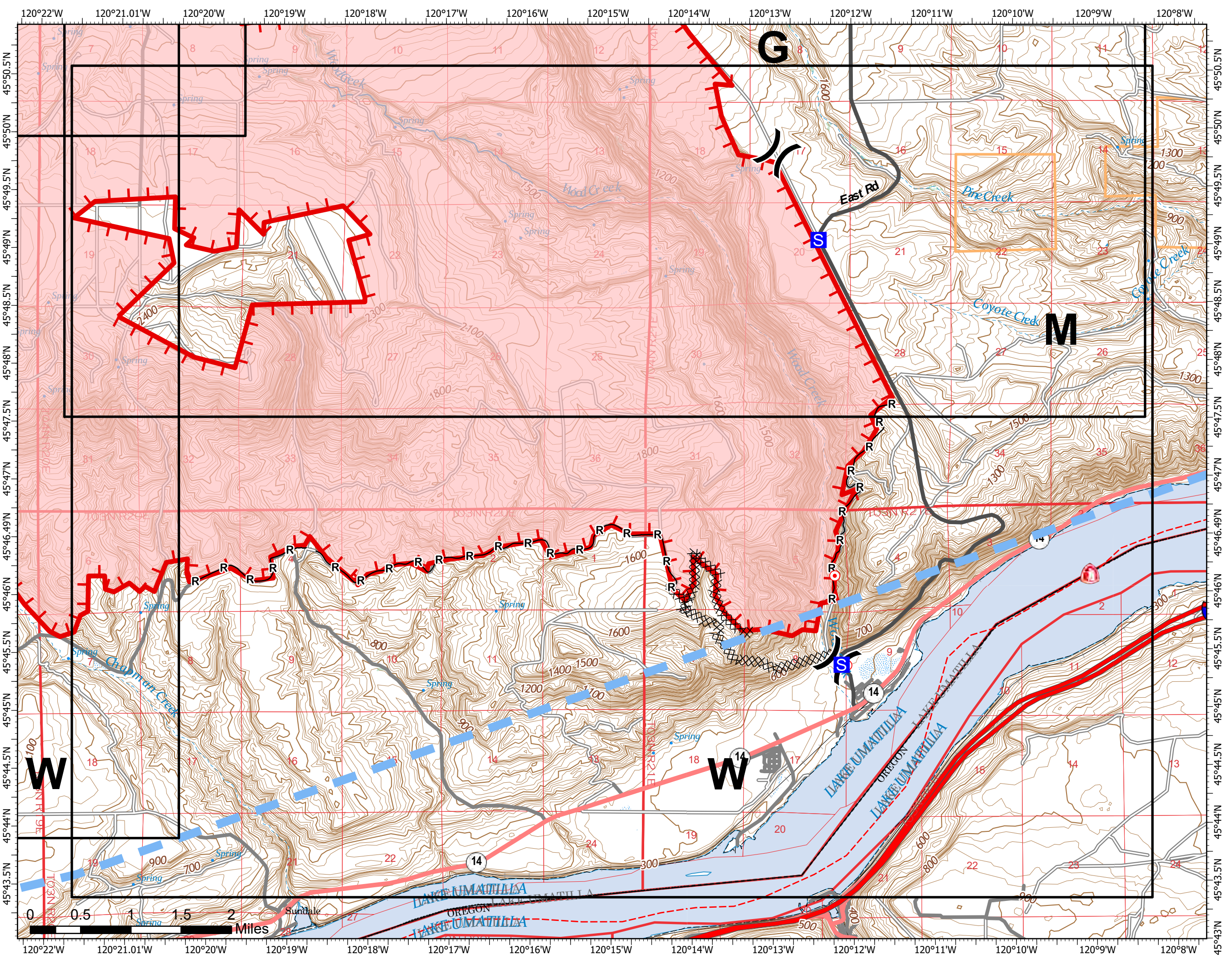


Page 3 of 4

- ( ) Division Break
- S Staging Area
- Hot Spot - Spot Fire
- XX Completed Dozer Line
- H Completed Hand Line
- R Completed Road as Line
- Temporary Flight Restriction
- Uncontained



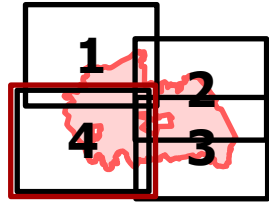
7/23/2023 2030  
Acres from IR and GPS  
North American 1983 Datum, LatLong  
Grid



# IAP

Newell Road  
WA-SES-000464  
7/24/2023 Day

52,034 acres at 7/23/2023 @ 0913



Page 4 of 4

- ( ) Division Break
- Drop Point
- ××× Completed Dozer Line
- R— Completed Road as Line
- ▬ Temporary Flight Restriction
- ▬ Uncontained



7/23/2023 2030  
Acres from IR and GPS  
North American 1983 Datum. LatLong  
Grid

