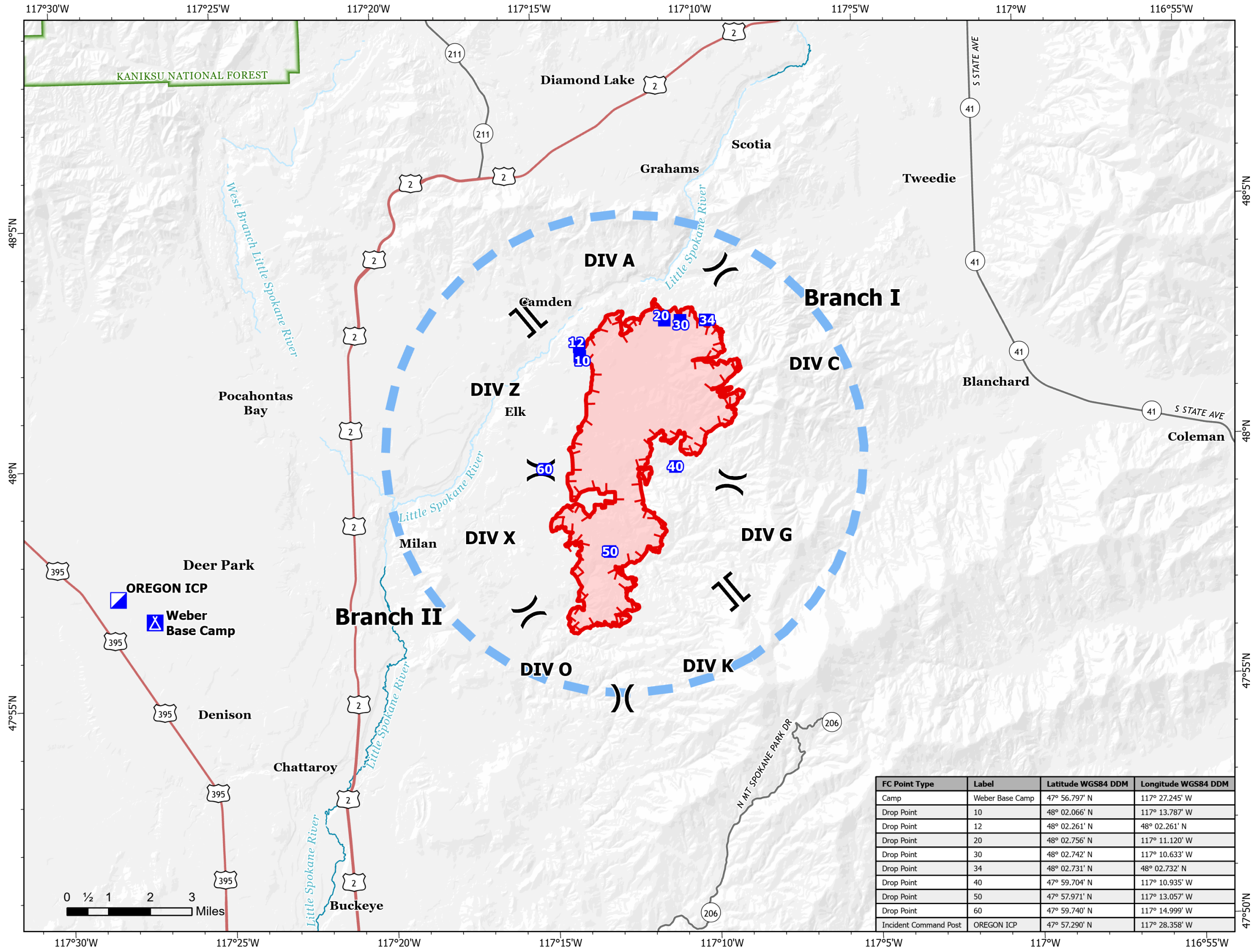




Pilot
Oregon
WA-NES-001979
8/22/2023

11,036 acres at 08/21/23 @ 2011

- Division Break
- Branch Break
- Incident Command Post
- Drop Point
- Camp
- Temporary Flight Restriction
- Uncontained
- Secondary Hwy
- Local Connector
- Wildfire Daily Fire Perimeter



FC Point Type	Label	Latitude WGS84 DDM	Longitude WGS84 DDM
Camp	Weber Base Camp	47° 56.797' N	117° 27.245' W
Drop Point	10	48° 02.066' N	117° 13.787' W
Drop Point	12	48° 02.261' N	48° 02.261' N
Drop Point	20	48° 02.756' N	117° 11.120' W
Drop Point	30	48° 02.742' N	117° 10.633' W
Drop Point	34	48° 02.731' N	48° 02.732' N
Drop Point	40	47° 59.704' N	117° 10.935' W
Drop Point	50	47° 57.971' N	117° 13.057' W
Drop Point	60	47° 59.740' N	117° 14.999' W
Incident Command Post	OREGON ICP	47° 57.290' N	117° 28.358' W

