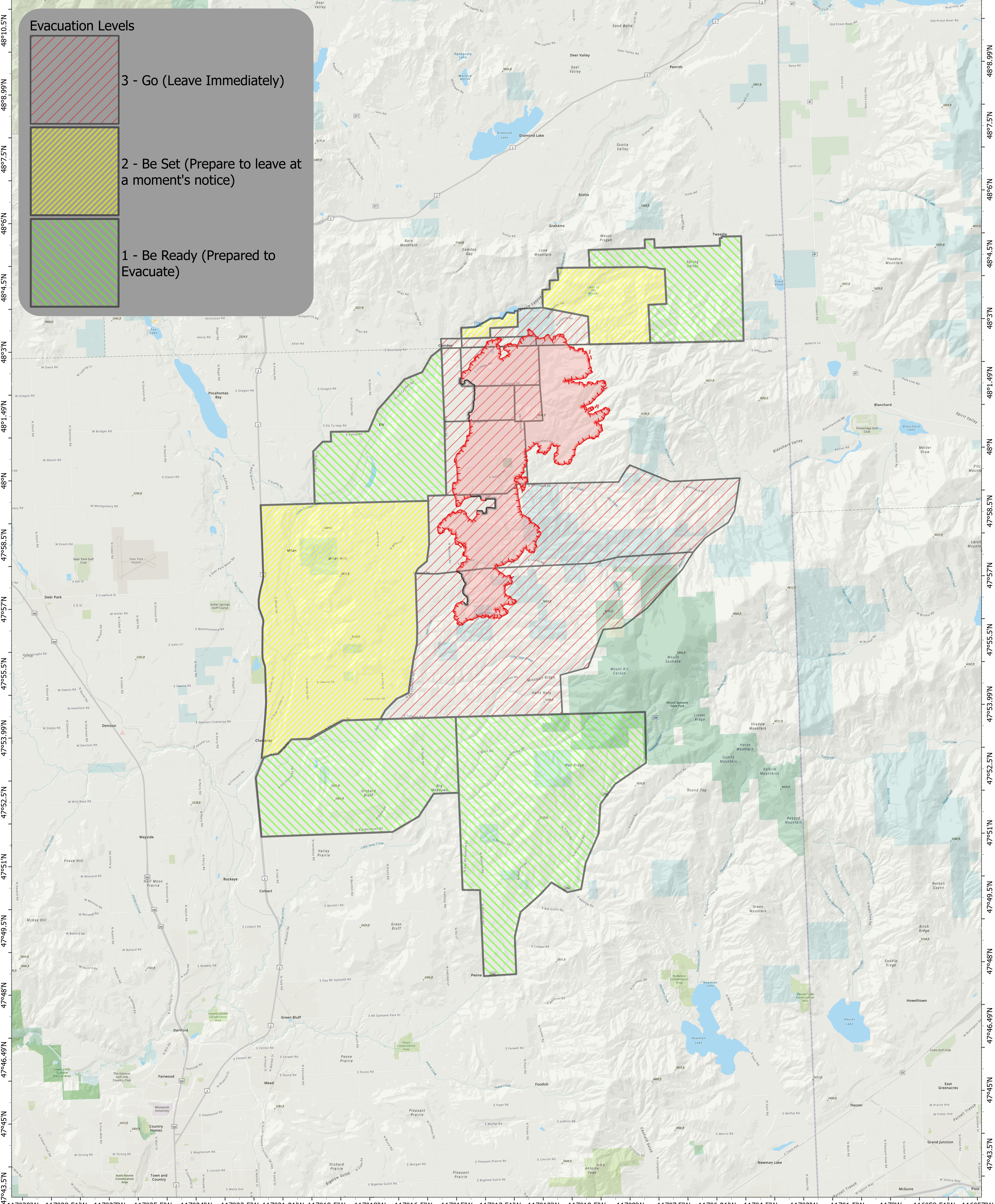


117°28.51'W 117°27'W 117°25.5'W 117°24'W 117°22.5'W 117°21.01'W 117°19.5'W 117°18'W 117°16.5'W 117°15'W 117°13.51'W 117°12'W 117°10.5'W 117°9'W 117°7.5'W 117°6.01'W 117°4.5'W 117°3'W 117°1.5'W 117°W 116°58.51'W 116°57'W 116°55.5'W



OREGON EVAC ZONES WA-NES-001979

11,021 acres
as of 08/22/23 @
2210 Acres
determined
from IR

North American
1983 Datum,
LatLong Grid

- Perimeter Line
- Contained
- Uncontained
- Ownership
- Bureau of Land Management (BLM)
- State
- US Forest Service (USFS)
- Undetermined

08/24/2023 24 Hour

