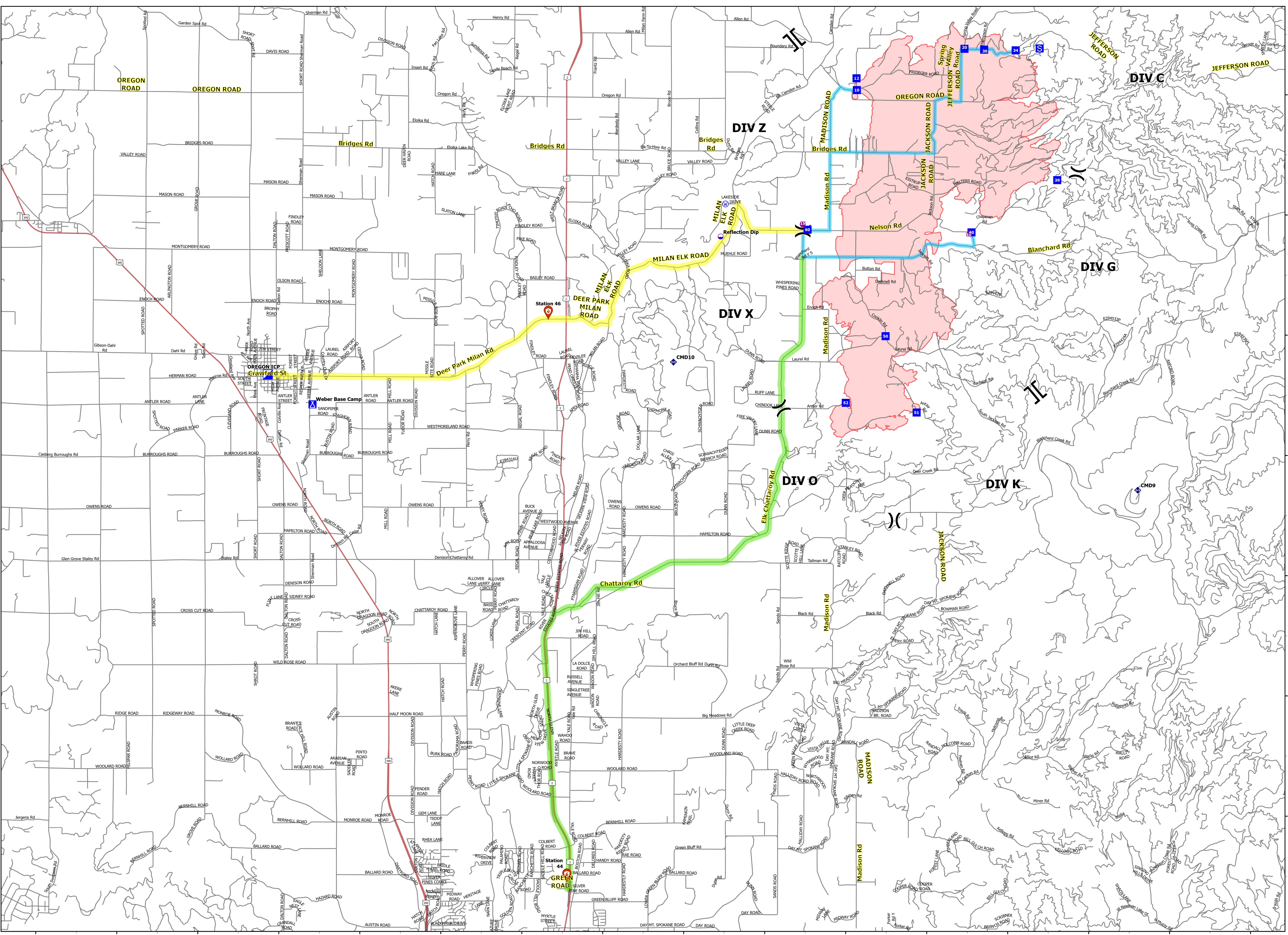


48°24'N 48°18'N 48°12'N 47°58'N 47°52'N 47°50'N 117°34'W 117°32'W 117°30'W 117°28'W 117°26'W 117°24'W 117°22'W 117°20'W 117°18'W 117°16'W 117°14'W 117°12'W 117°10'W 117°8'W 117°6'01'W 117°4'W



Oregon
Medical Transportation
WA-NES-001979

11,021 acres
as of
08/22/23 @ 2210
 North American 1983
 Datum, Lat Long Grid

- Dip Site
- Helispot
- Division Break
- Branch Break
- Incident Command Post
- Drop Point
- Camp
- Staging Area
- Repeater
- Water Source
- Fire Station
- Secondary Hwy
- Wildfire Daily Fire Perimeter

Medical Transportation
 Travel Time (minutes)

Segment	Travel Time (minutes)
DP24 to Madison Rd	10
DP40 to DP60	10
DP10 to DP60	10
DP60 to ICP	20
DP60 to Spokane Hospitals	40

