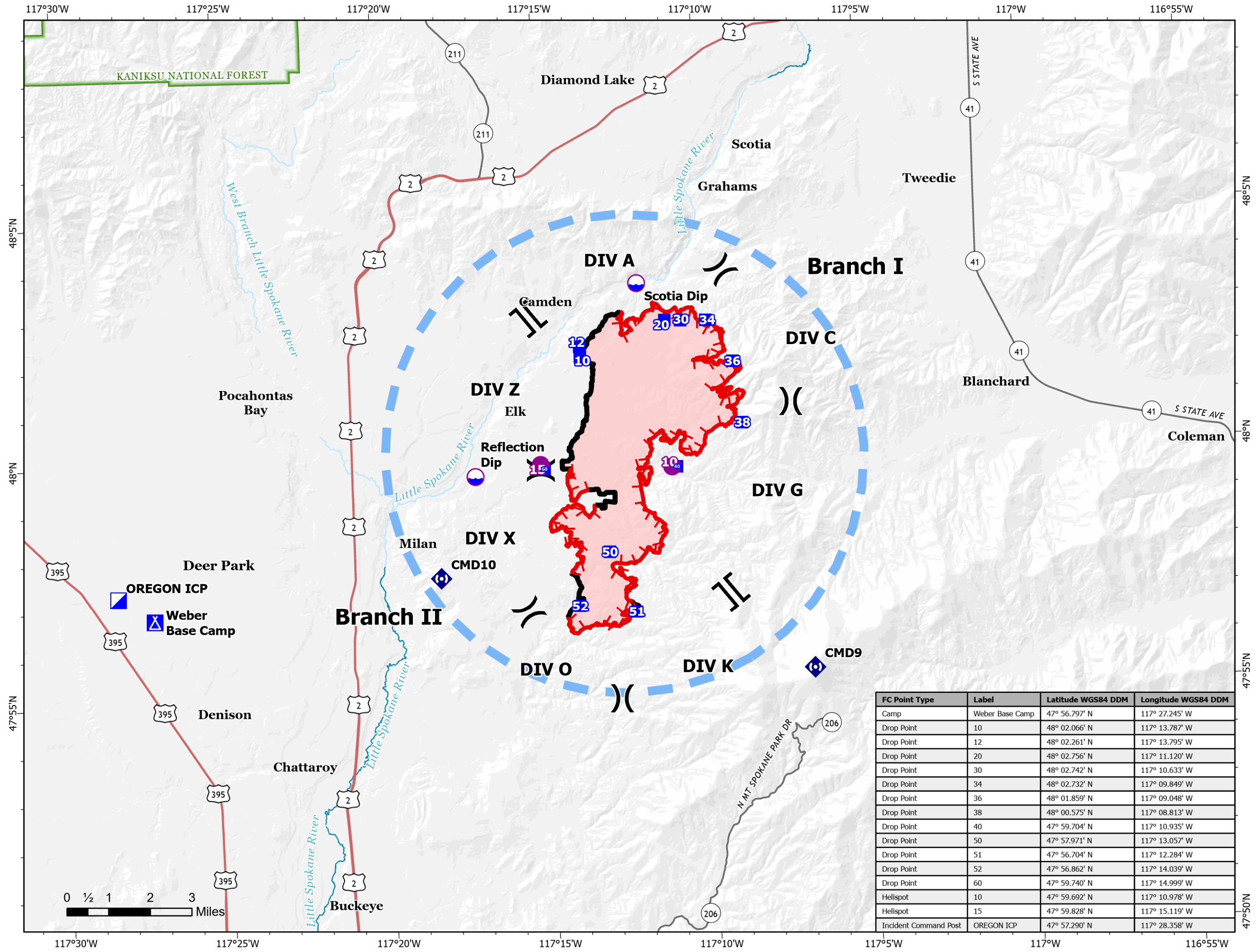




Pilot
OREGON
WA-NES-001979
08/25/2023

11,063 acres at 08/24/23 @ 1141

-  Dip Site
-  Helispot
-  Division Break
-  Branch Break
-  Incident Command Post
-  Drop Point
-  Camp
-  Repeater
-  Temporary Flight Restriction
-  Contained
-  Uncontained
-  Secondary Hwy
-  Local Connector
-  Wildfire Daily Fire Perimeter



FC Point Type	Label	Latitude WGS84 DDM	Longitude WGS84 DDM
Camp	Weber Base Camp	47° 56.797' N	117° 27.245' W
Drop Point	10	48° 02.066' N	117° 13.787' W
Drop Point	12	48° 02.261' N	117° 13.795' W
Drop Point	20	48° 02.756' N	117° 11.120' W
Drop Point	30	48° 02.742' N	117° 10.633' W
Drop Point	34	48° 02.732' N	117° 09.849' W
Drop Point	36	48° 01.859' N	117° 09.048' W
Drop Point	38	48° 00.575' N	117° 08.813' W
Drop Point	40	47° 59.704' N	117° 10.935' W
Drop Point	50	47° 57.971' N	117° 13.057' W
Drop Point	51	47° 56.704' N	117° 12.284' W
Drop Point	52	47° 56.862' N	117° 14.039' W
Drop Point	60	47° 59.740' N	117° 14.999' W
Helispot	10	47° 59.692' N	117° 10.978' W
Helispot	15	47° 59.828' N	117° 15.119' W
Incident Command Post	OREGON ICP	47° 57.290' N	117° 28.358' W

