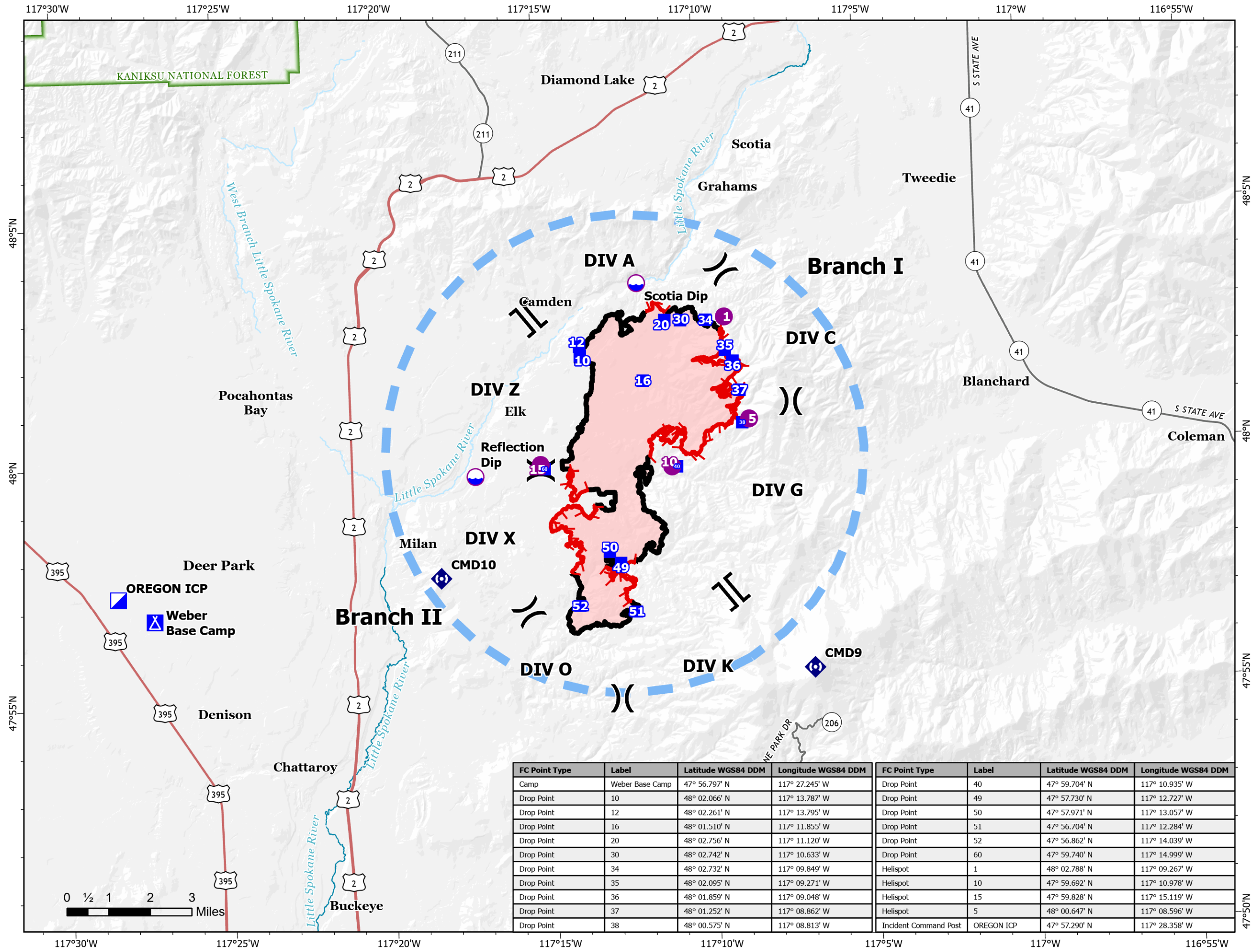




**Pilot**  
**OREGON**  
**WA-NES-001979**  
**08/28/2023**

10,898 acres at 08/27/23 @ 1445

- Dip Site
- Helispot
- Division Break
- Branch Break
- Incident Command Post
- Drop Point
- Camp
- Repeater
- Temporary Flight Restriction
- Contained
- Uncontained
- Secondary Hwy
- Local Connector
- Wildfire Daily Fire Perimeter



FC Point Type	Label	Latitude WGS84 DDM	Longitude WGS84 DDM	FC Point Type	Label	Latitude WGS84 DDM	Longitude WGS84 DDM
Camp	Weber Base Camp	47° 56.797' N	117° 27.245' W	Drop Point	40	47° 59.704' N	117° 10.935' W
Drop Point	10	48° 02.066' N	117° 13.787' W	Drop Point	49	47° 57.730' N	117° 12.727' W
Drop Point	12	48° 02.261' N	117° 13.795' W	Drop Point	50	47° 57.971' N	117° 13.057' W
Drop Point	16	48° 01.510' N	117° 11.855' W	Drop Point	51	47° 56.704' N	117° 12.284' W
Drop Point	20	48° 02.756' N	117° 11.120' W	Drop Point	52	47° 56.862' N	117° 14.039' W
Drop Point	30	48° 02.742' N	117° 10.633' W	Drop Point	60	47° 59.740' N	117° 14.999' W
Drop Point	34	48° 02.732' N	117° 09.849' W	Helispot	1	48° 02.788' N	117° 09.267' W
Drop Point	35	48° 02.095' N	117° 09.271' W	Helispot	10	47° 59.692' N	117° 10.978' W
Drop Point	36	48° 01.859' N	117° 09.048' W	Helispot	15	47° 59.828' N	117° 15.119' W
Drop Point	37	48° 01.252' N	117° 08.862' W	Helispot	5	48° 00.647' N	117° 08.596' W
Drop Point	38	48° 00.575' N	117° 08.813' W	Incident Command Post	OREGON ICP	47° 57.290' N	117° 28.358' W

