



117°19'W 117°18'W 117°17'W 117°16'W 117°15'W 117°14'W 117°13'W 117°12'W 117°11'W 117°10'W 117°9'W 117°8'W 117°7'W 117°6.01'W 117°5'W

48°6'N 48°5.5'N 48°5'N 48°4.5'N 48°4'N 48°3.5'N 48°3'N 48°2.5'N 48°2'N 48°1.49'N 48°1'N 48°0.5'N 48°N 47°59'N 47°58'N 47°57'N 47°56'N 47°55'N 47°54.5'N 47°54'N 47°53.99'N

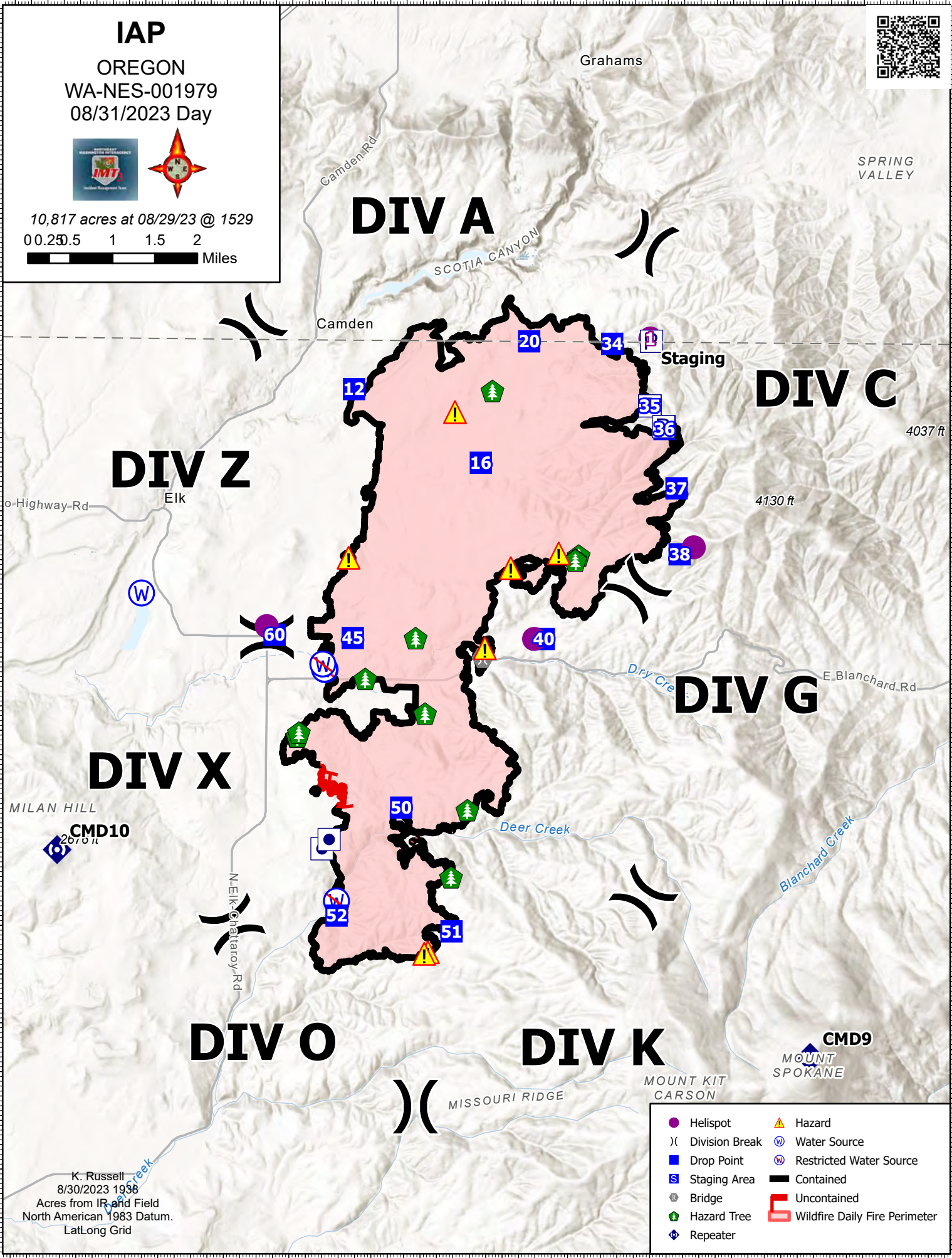
48°6'N 48°5.5'N 48°5'N 48°4.5'N 48°4'N 48°3.5'N 48°3'N 48°2.5'N 48°2'N 48°1.49'N 48°1'N 48°0.5'N 48°N 47°59'N 47°58'N 47°57'N 47°56'N 47°55'N 47°54.5'N 47°54'N 47°53.99'N

**IAP**  
**OREGON**  
**WA-NES-001979**  
**08/31/2023 Day**

10,817 acres at 08/29/23 @ 1529

0 0.5 1 1.5 2 Miles



- Staging Area
- Drop Point
- Hazard Tree
- Wildfire Daily Fire Perimeter
- Hazard
- Water Source
- Restricted Water Source
- Division Break
- Contained
- Uncontained
- Repeater

K. Russell  
 8/30/2023 1938  
 Acres from IR and Field  
 North American 1983 Datum.  
 LatLong Grid

117°19'W 117°18'W 117°17'W 117°16'W 117°15'W 117°14'W 117°13'W 117°12'W 117°11'W 117°10'W 117°9'W 117°8'W 117°7'W 117°6.01'W 117°5'W