

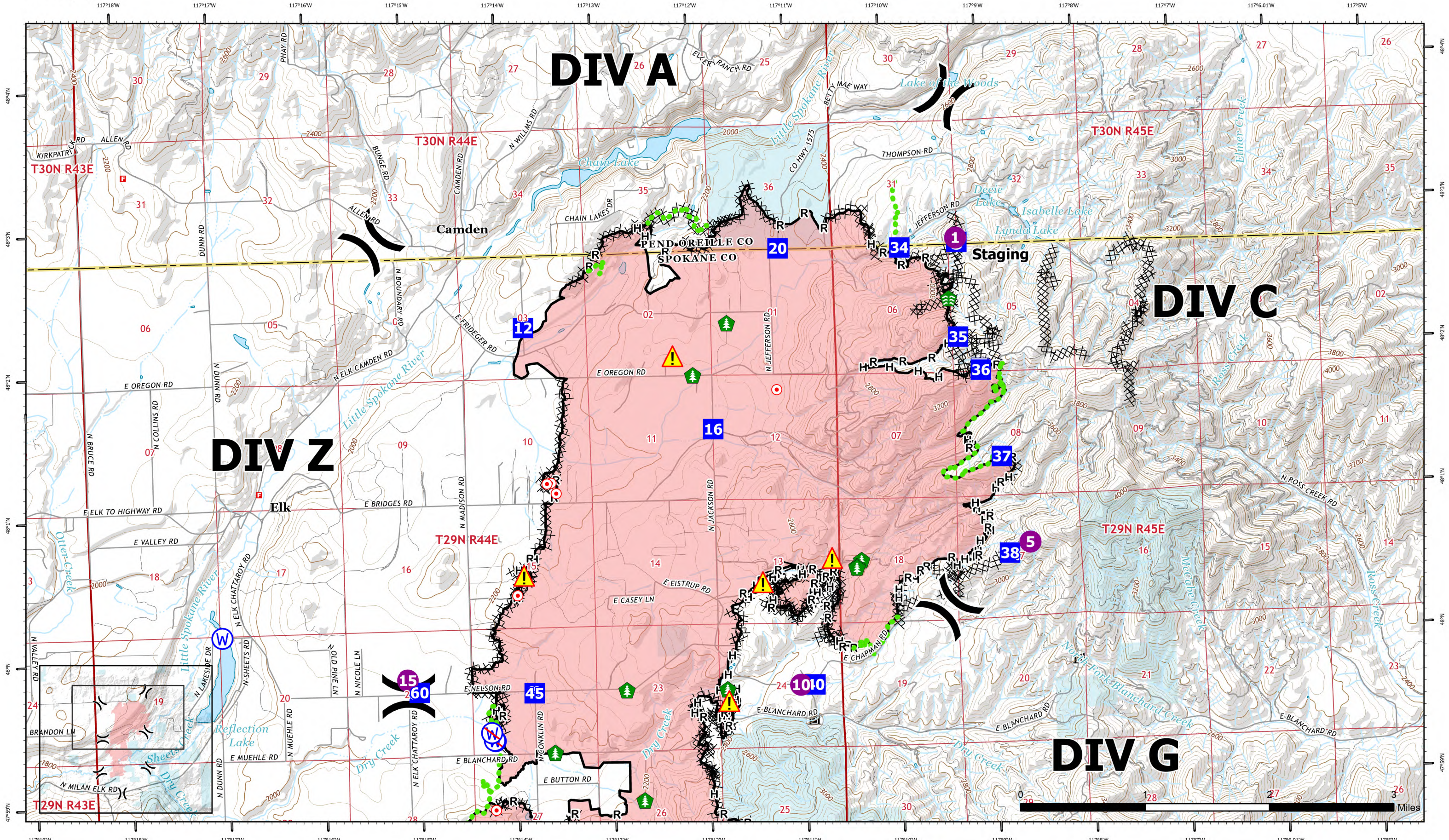
# OPERATIONS

Div: A/C/Z

Map Created: 9/1/2023 21:59

Operational period: 09/02/2023

# OREGON



**OREGON OPERATIONS**  
 WA-NES-001979  
 10,817 acres as of 08/29/23 @ 1529  
 North American 1983 Datum, Lat, Long Grid

- Pump
- Division Break
- Staging Area
- Stream Crossing
- Hazard
- Restricted Water Source
- Completed Hand Line
- Completed Dozer Line
- Completed Fuel Break
- Helispot
- Drop Point
- Hot Spot - Spot Fire
- Hazard Tree
- Water Source
- State
- Completed Road as Line
- Contained

