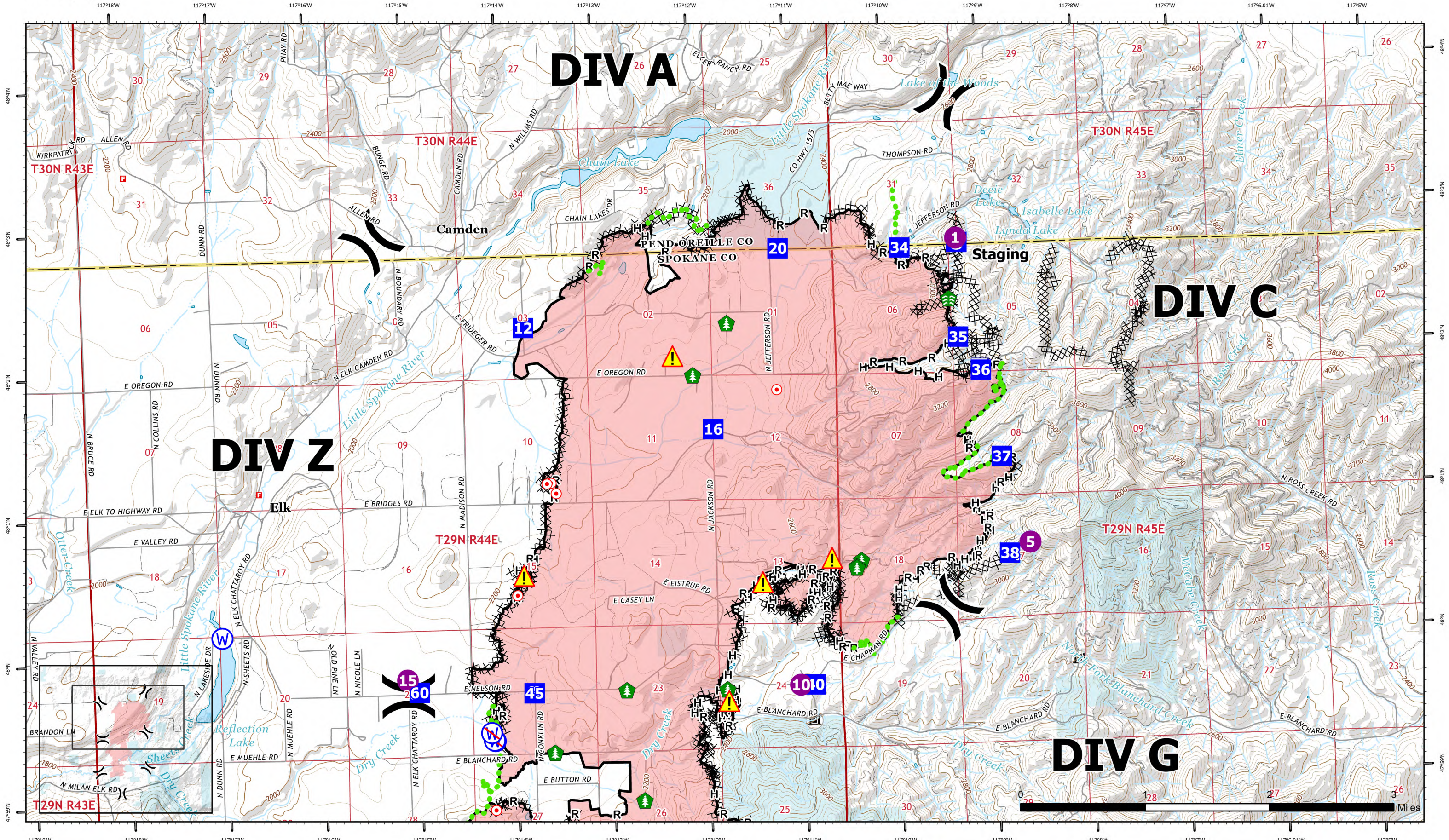


# OPERATIONS

Div: A/C/Z

Map Created: 9/1/2023 21:55  
Operational period: 09/02/2023

# OREGON



**OREGON OPERATIONS**  
WA-NES-001979

10,817 acres  
as of 08/29/23 @ 1529

North American 1983 Datum,  
Lat, Long Grid

- |          |                |                      |                 |              |                         |                        |                      |
|----------|----------------|----------------------|-----------------|--------------|-------------------------|------------------------|----------------------|
| Pump     | Division Break | Staging Area         | Stream Crossing | Hazard       | Restricted Water Source | Completed Hand Line    | State                |
| Helispot | Drop Point     | Hot Spot - Spot Fire | Hazard Tree     | Water Source | Completed Dozer Line    | Completed Road as Line | Completed Fuel Break |
|          |                |                      |                 |              | Completed Fuel Break    | Contained              |                      |



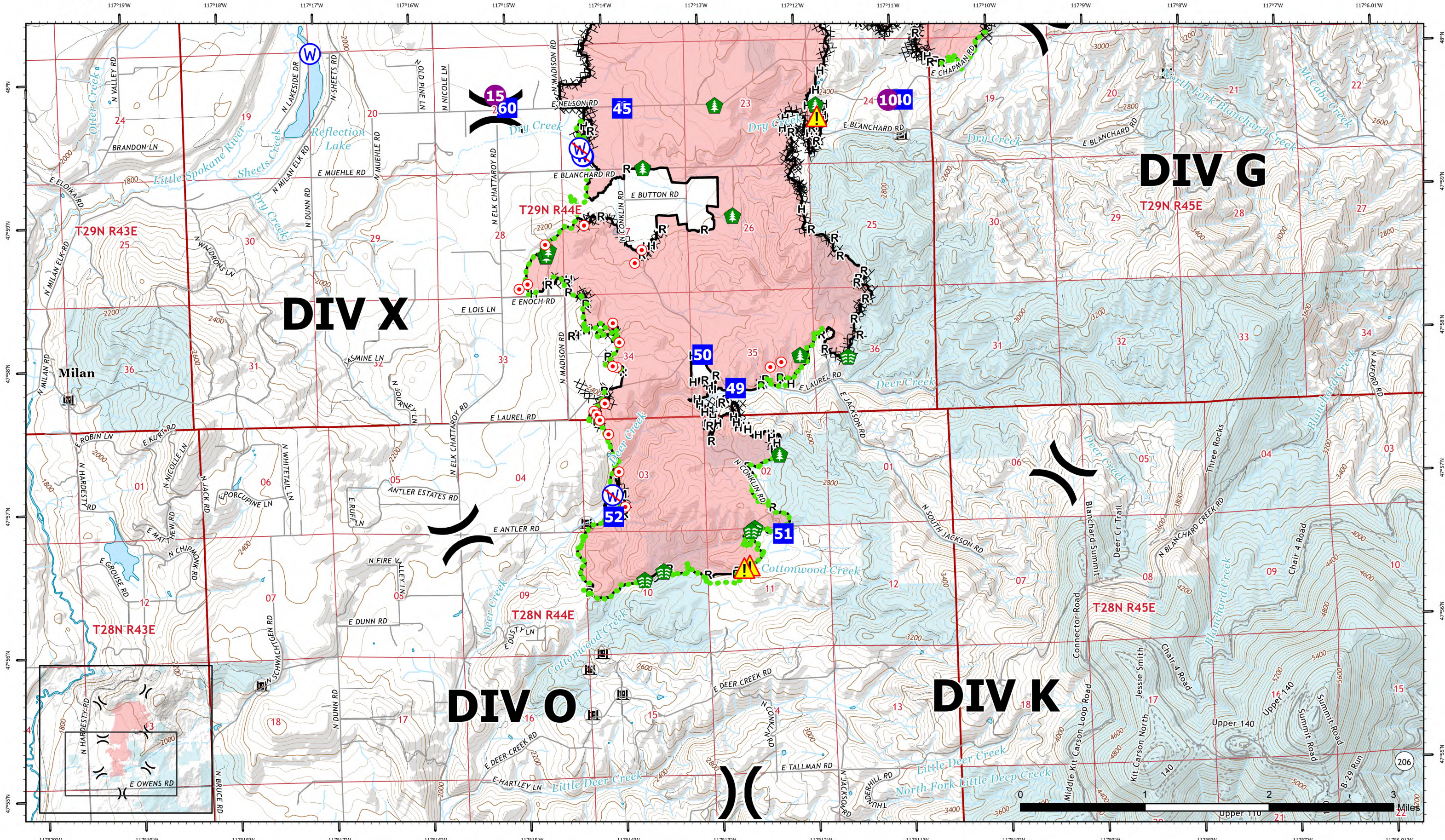
# OPERATIONS

Div: G/K/O/X

Map Created: 9/1/2023 21:55

Operational period: 09/02/2023

# OREGON



## DIV G

## DIV X

## DIV O

## DIV K



**OREGON OPERATIONS**  
 WA-NES-001979  
 10,817 acres as of 08/29/23 @ 1529  
 North American 1983 Datum, Lat,Long Grid

- Hot Spot
- Drop Point
- 🌳 Stream Crossing
- ⚠️ Hazard
- Ⓜ️ Restricted Water Source
- Completed Mixed Construction Line
- Contained
- Division Break
- Hot Spot - Spot Fire
- 🌳 Hazard Tree
- Ⓜ️ Water Source
- Completed Dozer Line
- State
- Completed Hand Line
- Completed Plow Line
- Completed Road as Line

