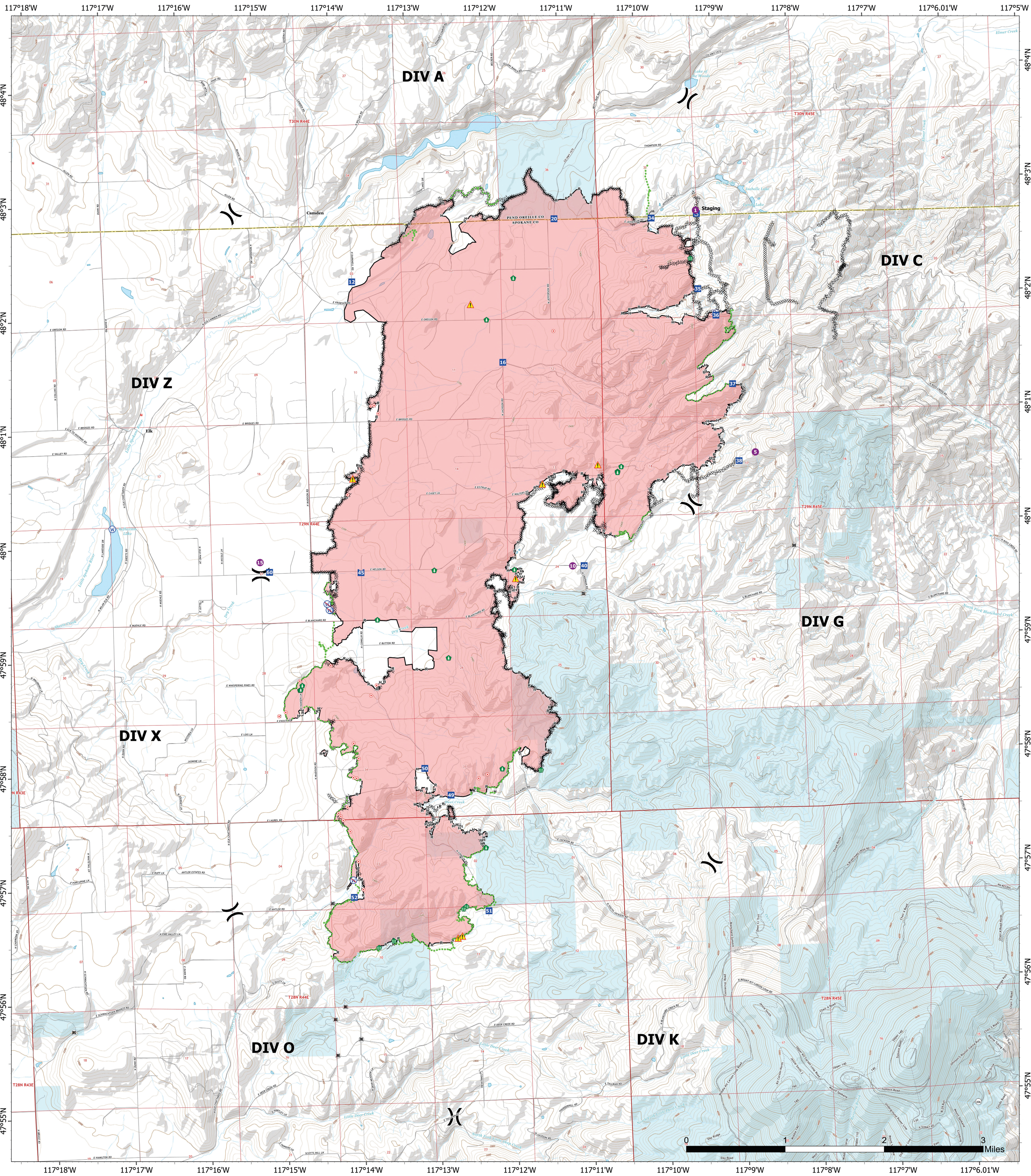


Map Created: 9/1/2023 21:06



**OREGON
OPERATIONS
WA-
NES-001979**

**10,817 acres
as of 08/29/23 @
1529**
North American 1983 Datum.
Lat/Long Grid

- Pump
- Hot Spot - Spot Fire
- Restricted Water Source
- Completed Plow Line
- Completed Dozer Line
- Completed Fuel Break
- Completed Hand Line
- Completed Mixed Construction Line
- Helispot
- Stream Crossing
- Completed Water Line
- Completed Road as Line
- Completed Road as Line
- Contained
- State
- Division Break
- Hazard Tree
- Completed Hand Line
- Completed Mixed Construction Line
- Drop Point
- Hazard
- Water Source
- Staging Area

