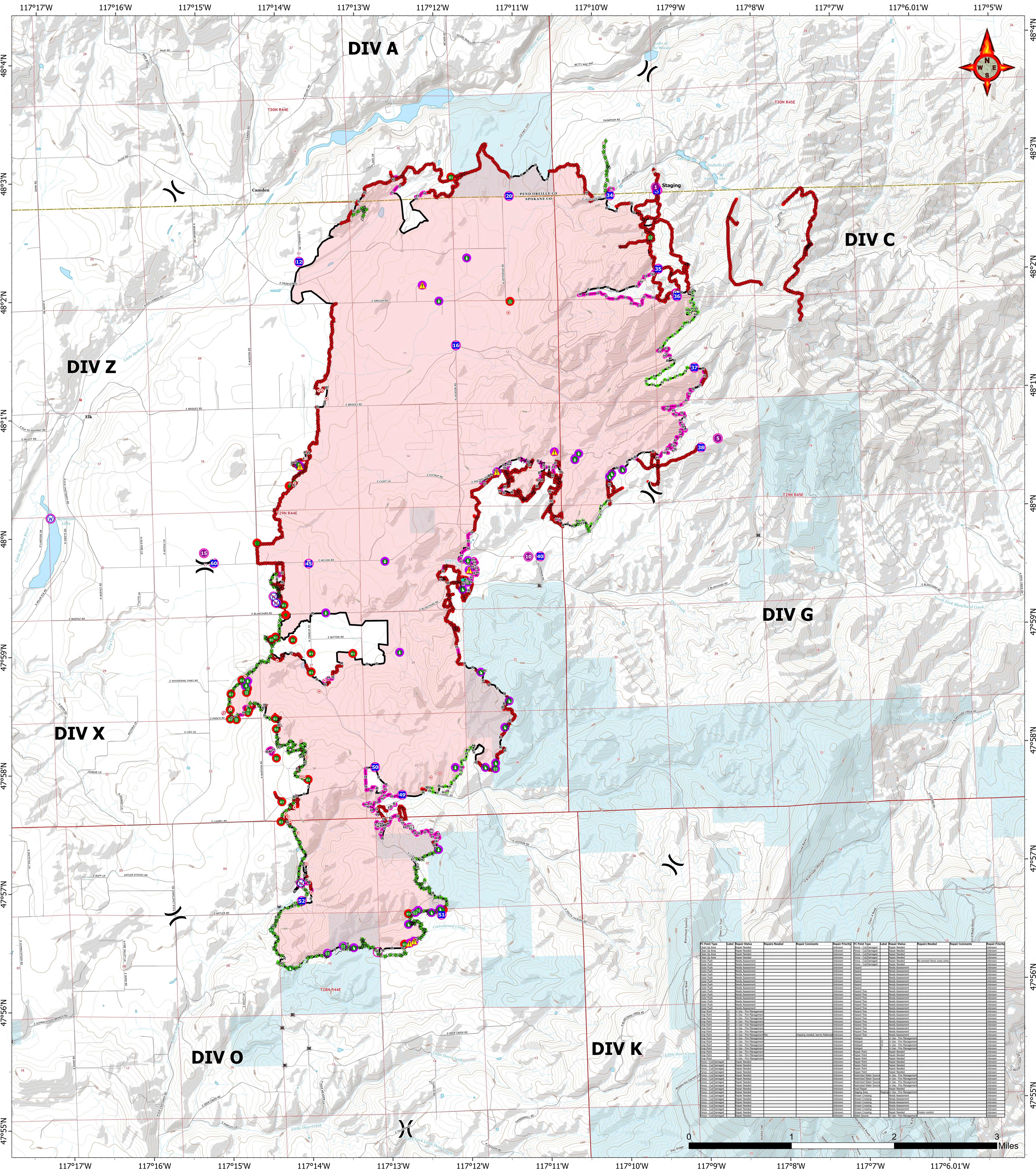


Map Created: 9/1/2023 21:10



IC Point Type	Label	Repair Status	Repairs Needed	Repair Comments	Repair Priority	IC Point Type	Label	Repair Status	Repairs Needed	Repair Comments	Repair Priority
Stream Crossing	1	In Use - Fire Management			Medium	Stream Crossing	2	Completed - Inspected			Medium
Stream Crossing	3	In Use - Fire Management			Medium	Stream Crossing	4	Completed - Inspected			Medium
Stream Crossing	5	In Use - Fire Management			Medium	Stream Crossing	6	Completed - Inspected			Medium
Stream Crossing	7	In Use - Fire Management			Medium	Stream Crossing	8	Completed - Inspected			Medium
Stream Crossing	9	In Use - Fire Management			Medium	Stream Crossing	10	Completed - Inspected			Medium
Stream Crossing	11	In Use - Fire Management			Medium	Stream Crossing	12	Completed - Inspected			Medium
Stream Crossing	13	In Use - Fire Management			Medium	Stream Crossing	14	Completed - Inspected			Medium
Stream Crossing	15	In Use - Fire Management			Medium	Stream Crossing	16	Completed - Inspected			Medium
Stream Crossing	17	In Use - Fire Management			Medium	Stream Crossing	18	Completed - Inspected			Medium
Stream Crossing	19	In Use - Fire Management			Medium	Stream Crossing	20	Completed - Inspected			Medium
Stream Crossing	21	In Use - Fire Management			Medium	Stream Crossing	22	Completed - Inspected			Medium
Stream Crossing	23	In Use - Fire Management			Medium	Stream Crossing	24	Completed - Inspected			Medium
Stream Crossing	25	In Use - Fire Management			Medium	Stream Crossing	26	Completed - Inspected			Medium
Stream Crossing	27	In Use - Fire Management			Medium	Stream Crossing	28	Completed - Inspected			Medium
Stream Crossing	29	In Use - Fire Management			Medium	Stream Crossing	30	Completed - Inspected			Medium
Stream Crossing	31	In Use - Fire Management			Medium	Stream Crossing	32	Completed - Inspected			Medium
Stream Crossing	33	In Use - Fire Management			Medium	Stream Crossing	34	Completed - Inspected			Medium
Stream Crossing	35	In Use - Fire Management			Medium	Stream Crossing	36	Completed - Inspected			Medium
Stream Crossing	37	In Use - Fire Management			Medium	Stream Crossing	38	Completed - Inspected			Medium
Stream Crossing	39	In Use - Fire Management			Medium	Stream Crossing	40	Completed - Inspected			Medium
Stream Crossing	41	In Use - Fire Management			Medium	Stream Crossing	42	Completed - Inspected			Medium
Stream Crossing	43	In Use - Fire Management			Medium	Stream Crossing	44	Completed - Inspected			Medium
Stream Crossing	45	In Use - Fire Management			Medium	Stream Crossing	46	Completed - Inspected			Medium
Stream Crossing	47	In Use - Fire Management			Medium	Stream Crossing	48	Completed - Inspected			Medium
Stream Crossing	49	In Use - Fire Management			Medium	Stream Crossing	50	Completed - Inspected			Medium
Stream Crossing	51	In Use - Fire Management			Medium	Stream Crossing	52	Completed - Inspected			Medium
Stream Crossing	53	In Use - Fire Management			Medium	Stream Crossing	54	Completed - Inspected			Medium
Stream Crossing	55	In Use - Fire Management			Medium	Stream Crossing	56	Completed - Inspected			Medium
Stream Crossing	57	In Use - Fire Management			Medium	Stream Crossing	58	Completed - Inspected			Medium
Stream Crossing	59	In Use - Fire Management			Medium	Stream Crossing	60	Completed - Inspected			Medium
Stream Crossing	61	In Use - Fire Management			Medium	Stream Crossing	62	Completed - Inspected			Medium
Stream Crossing	63	In Use - Fire Management			Medium	Stream Crossing	64	Completed - Inspected			Medium
Stream Crossing	65	In Use - Fire Management			Medium	Stream Crossing	66	Completed - Inspected			Medium
Stream Crossing	67	In Use - Fire Management			Medium	Stream Crossing	68	Completed - Inspected			Medium
Stream Crossing	69	In Use - Fire Management			Medium	Stream Crossing	70	Completed - Inspected			Medium
Stream Crossing	71	In Use - Fire Management			Medium	Stream Crossing	72	Completed - Inspected			Medium
Stream Crossing	73	In Use - Fire Management			Medium	Stream Crossing	74	Completed - Inspected			Medium
Stream Crossing	75	In Use - Fire Management			Medium	Stream Crossing	76	Completed - Inspected			Medium
Stream Crossing	77	In Use - Fire Management			Medium	Stream Crossing	78	Completed - Inspected			Medium
Stream Crossing	79	In Use - Fire Management			Medium	Stream Crossing	80	Completed - Inspected			Medium
Stream Crossing	81	In Use - Fire Management			Medium	Stream Crossing	82	Completed - Inspected			Medium
Stream Crossing	83	In Use - Fire Management			Medium	Stream Crossing	84	Completed - Inspected			Medium
Stream Crossing	85	In Use - Fire Management			Medium	Stream Crossing	86	Completed - Inspected			Medium
Stream Crossing	87	In Use - Fire Management			Medium	Stream Crossing	88	Completed - Inspected			Medium
Stream Crossing	89	In Use - Fire Management			Medium	Stream Crossing	90	Completed - Inspected			Medium
Stream Crossing	91	In Use - Fire Management			Medium	Stream Crossing	92	Completed - Inspected			Medium
Stream Crossing	93	In Use - Fire Management			Medium	Stream Crossing	94	Completed - Inspected			Medium
Stream Crossing	95	In Use - Fire Management			Medium	Stream Crossing	96	Completed - Inspected			Medium
Stream Crossing	97	In Use - Fire Management			Medium	Stream Crossing	98	Completed - Inspected			Medium
Stream Crossing	99	In Use - Fire Management			Medium	Stream Crossing	100	Completed - Inspected			Medium

WA-NES-001979
OREGON REPAIR

10,817 acres
as of 08/29/23
@ 1529

North American 1983 Datum, LatLong Grid

- Pump
- HeliSpot
- Division Break
- Drop Point
- Staging Area
- Hot Spot - Spot Fire
- Other
- Bridge
- Stream Crossing
- Repair Point
- Hazard Tree
- Fence - Cut/Damaged
- Dozer Push
- Clean Up Area
- Hazard
- Water Source
- Restricted Water Source
- Completed Dozer Line
- Completed Fuel Break
- Completed Hand Line
- Completed Mixed Construction Line
- Completed Plow Line
- Completed Road as Line
- Contained
- State

Repair Status

- In Use - Fire Management
- Needs Assessment
- Repair Needed
- Completed - Inspected
- No Repair Needed