

117°16'W 117°15.5'W 117°15'W 117°14.5'W 117°14'W 117°13.51'W 117°13'W 117°12.5'W 117°12'W 117°11.5'W 117°11'W 117°10.5'W 117°10'W

Salvage Areas

OREGON
WA-NES-001979
09/01/2023 Day

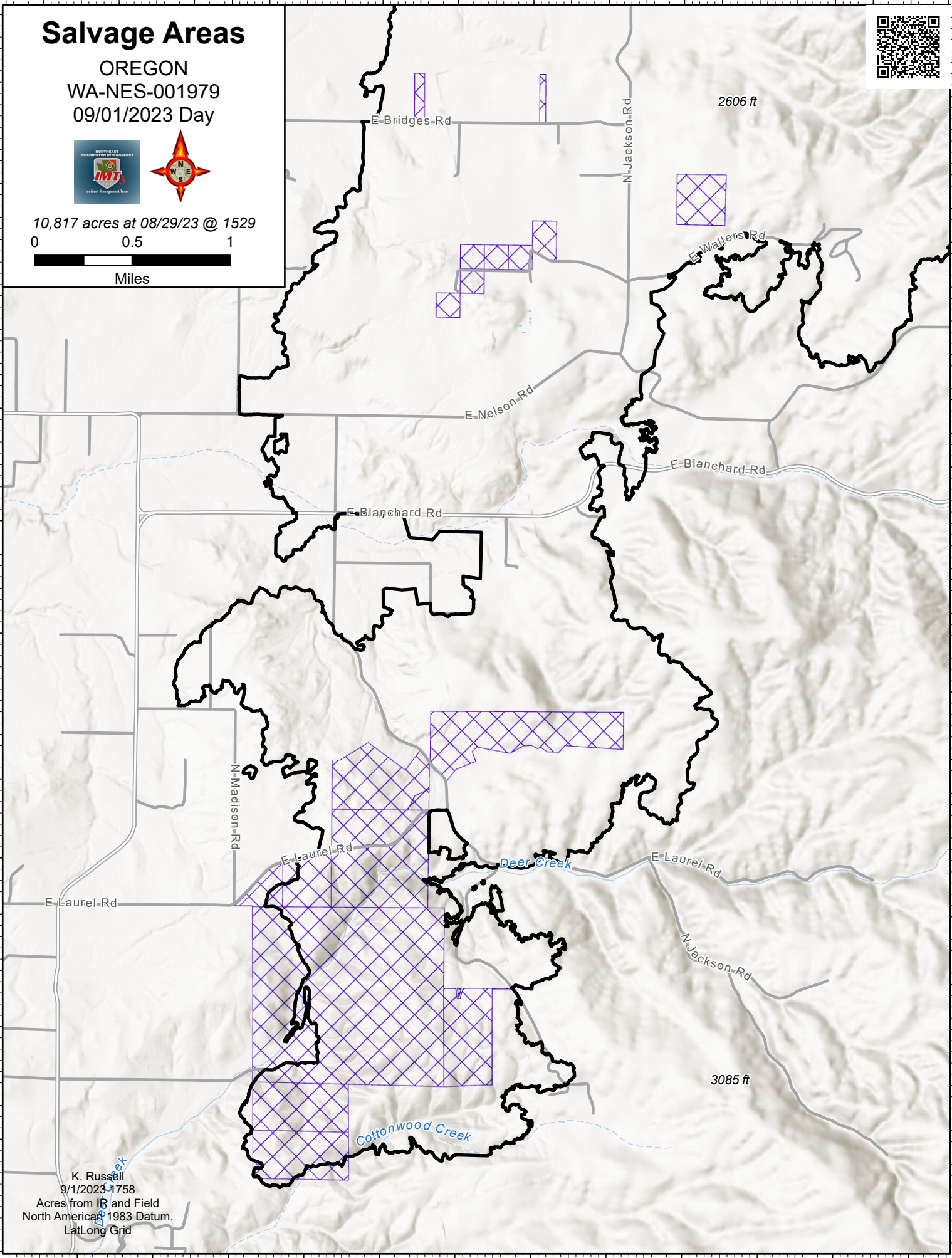


10,817 acres at 08/29/23 @ 1529
0 0.5 1
Miles



48°1'N
48°0.5'N
48°N
47°59.5'N
47°59'N
47°58.5'N
47°58'N
47°57.5'N
47°57'N
47°56.5'N
47°56'N

48°1.49'N
48°1'N
48°0.5'N
48°N
47°59.5'N
47°59'N
47°58.5'N
47°58'N
47°57.5'N
47°57'N
47°56.5'N
47°56'N



K. Russell
9/1/2023 1758
Acres from IR and Field
North American 1983 Datum.
LatLong Grid

117°15.5'W 117°15'W 117°14.5'W 117°14'W 117°13.51'W 117°13'W 117°12.5'W 117°12'W 117°11.5'W 117°11'W 117°10.5'W 117°10'W