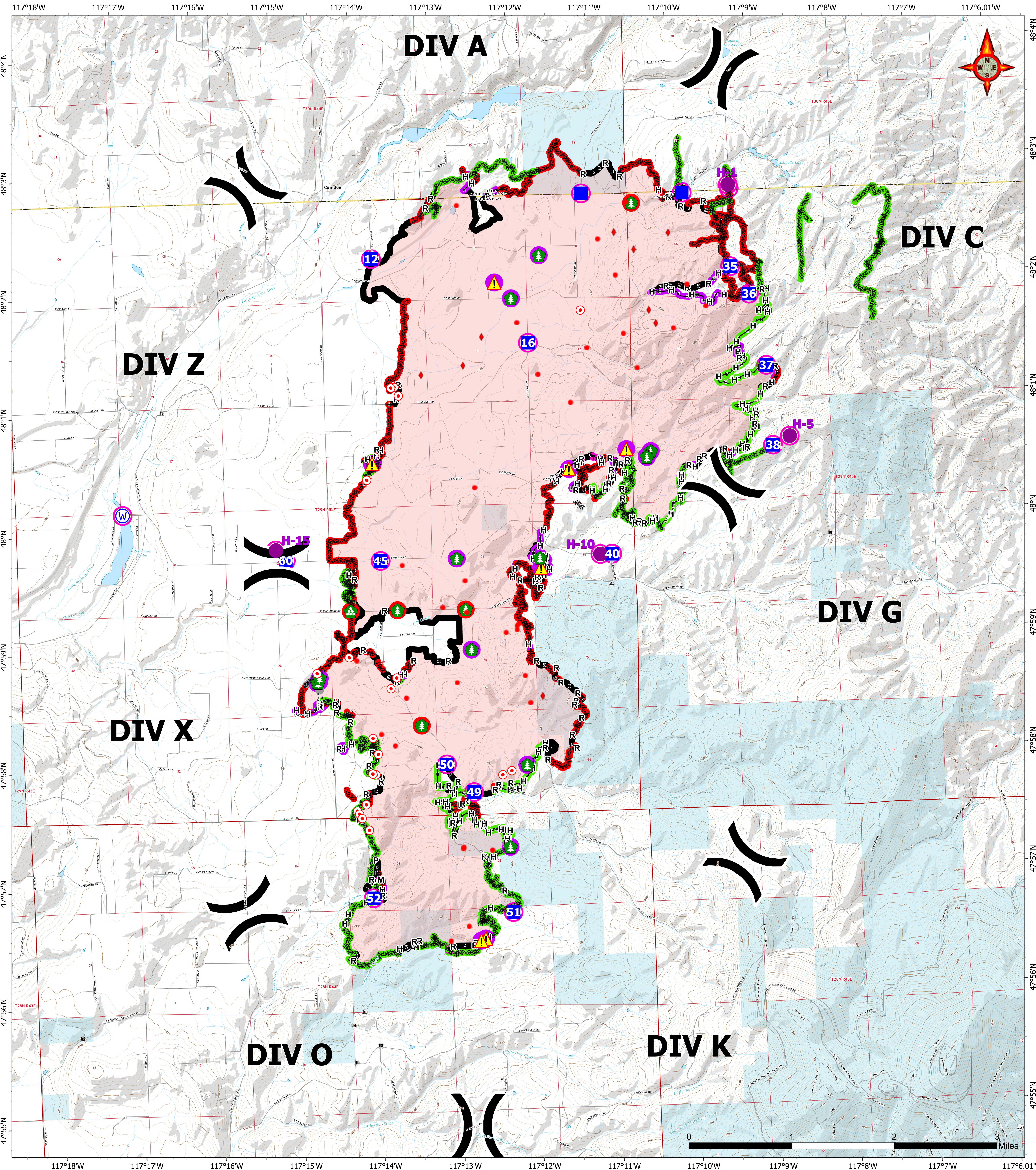


BRIEFING

09/04/2023

OREGON

Map Created: 9/3/2023 20:51



WA-NES-001979
OREGON
BRIEFING/REPAIR

10,817 acres
 as of 08/29/23
 @ 1530
 North American 1983
 Datum.
 LatLong Grid

- | | | | |
|------------------------|---------------------------|-------------------------------------|---------------------------|
|) Division Break | 🌳 Landing or Log Deck | 🔥 Possible IR Heat Source | P- Completed Plow Line |
| ⌘ Division Break | 🚧 Hazard Tree | ⊗ Completed Dozer Line | R- Completed Road as Line |
| 📍 Drop Point | ⚠️ Hazard | — Completed Hand Line | — Contained |
| 🔥 Hot Spot - Spot Fire | 💧 Water Source | ⊕ Completed Mixed Construction Line | 🌊 State |
| | 🔥 IR Isolated Heat Source | | |
-
- | | |
|---------------------------------|-------------------------------|
| 🟡 In Use - Fire Management (21) | 🟡 Needs Assessment (50) |
| 🟠 Needs Assessment (21) | 🔴 Repair Needed (119) |
| 🔴 Repair Needed (5) | 🟢 Completed - Inspected (140) |
| 🟡 In Use - Fire Management (5) | ⚪ Other - See Comments (1) |

