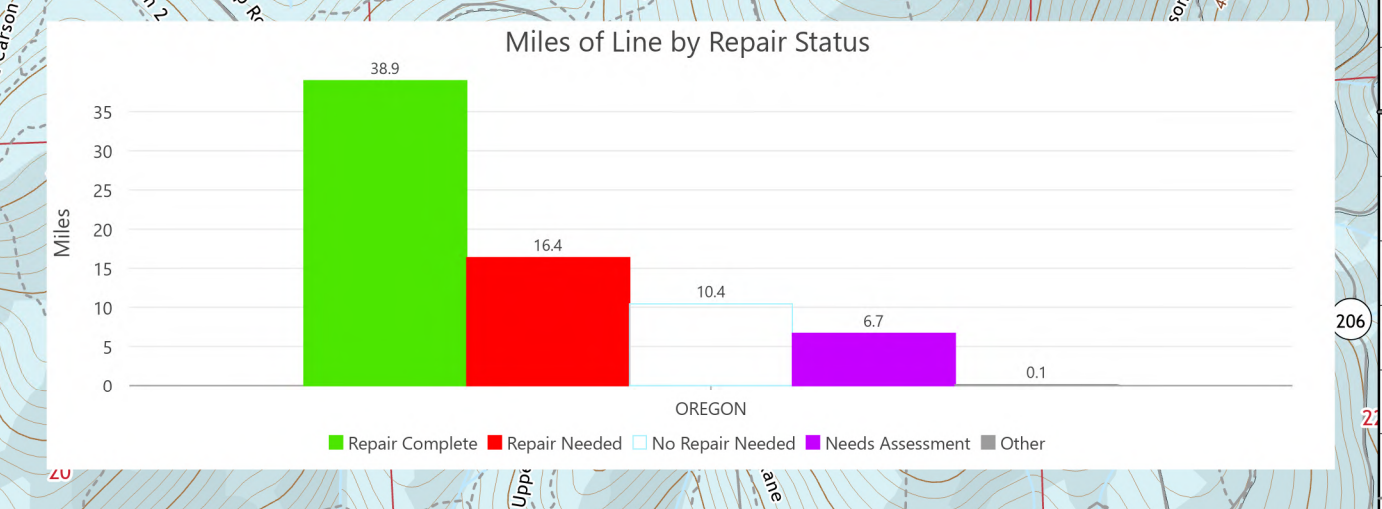
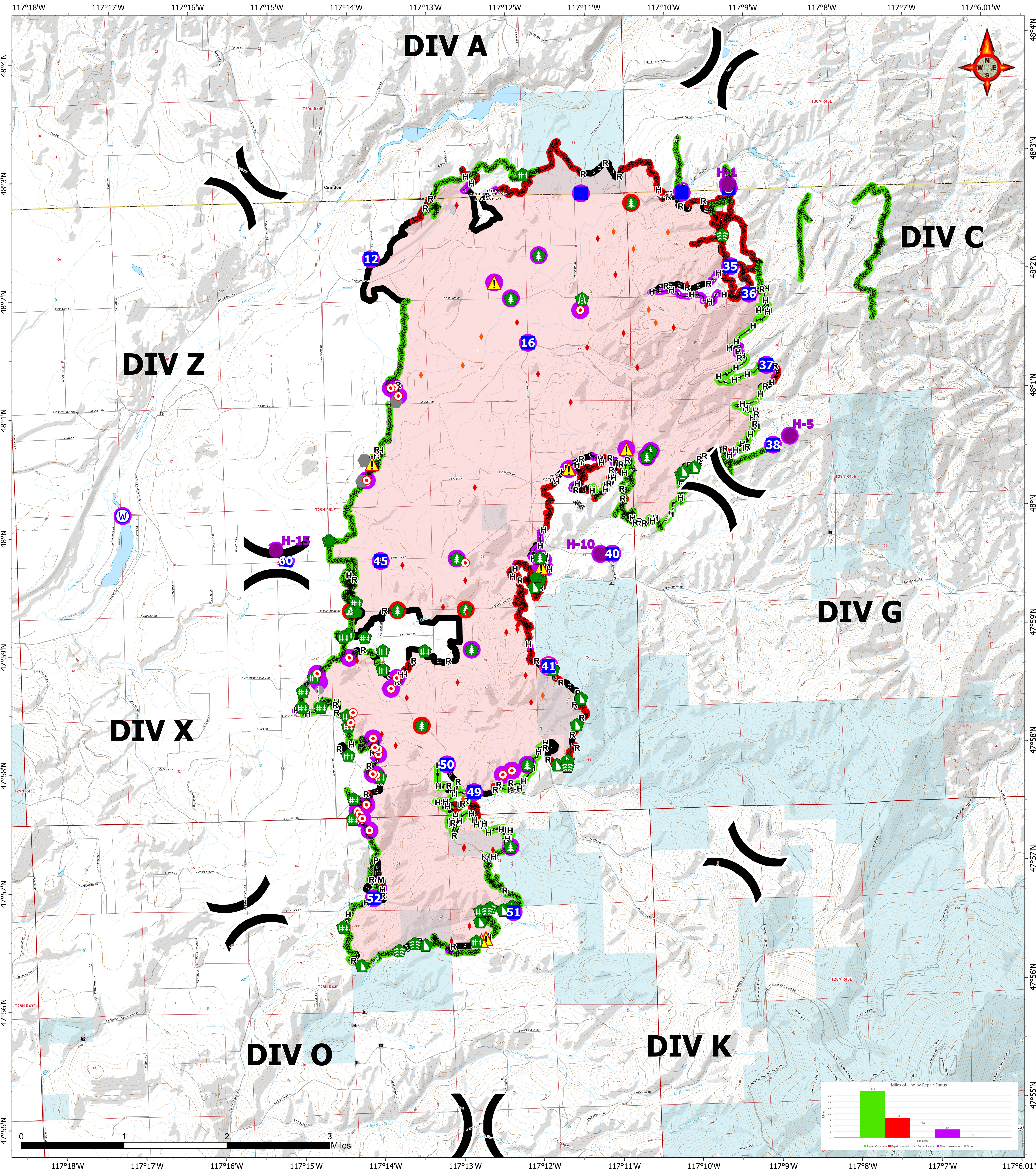


BRIEFING

09/05/2023

OREGON

Map Created: 9/4/2023 20:49



WA-NES-001979 10,817 acres as of 08/29/23 @ 1530
OREGON
BRIEFING/REPAIR North American 1983 Datum, LatLong Grid

- Helispot
- Road Repair
- Water Source
- M- Completed Mixed Construction Line
- X) Division Break
- Repair Point
- IR Isolated Heat Source
- P- Completed Plow Line
- Drop Point
- Landing or Log Deck
- Possible IR Heat Source
- R- Completed Road as Line
- Staging Area
- Hazard Tree
- X X Completed Dozer Line
- Hot Spot - Spot Fire
- Fence - Cut/Damaged
- H- Completed Hand Line
- Other
- Dozer Push
- Contained
- Stream Crossing
- Hazard
- State

