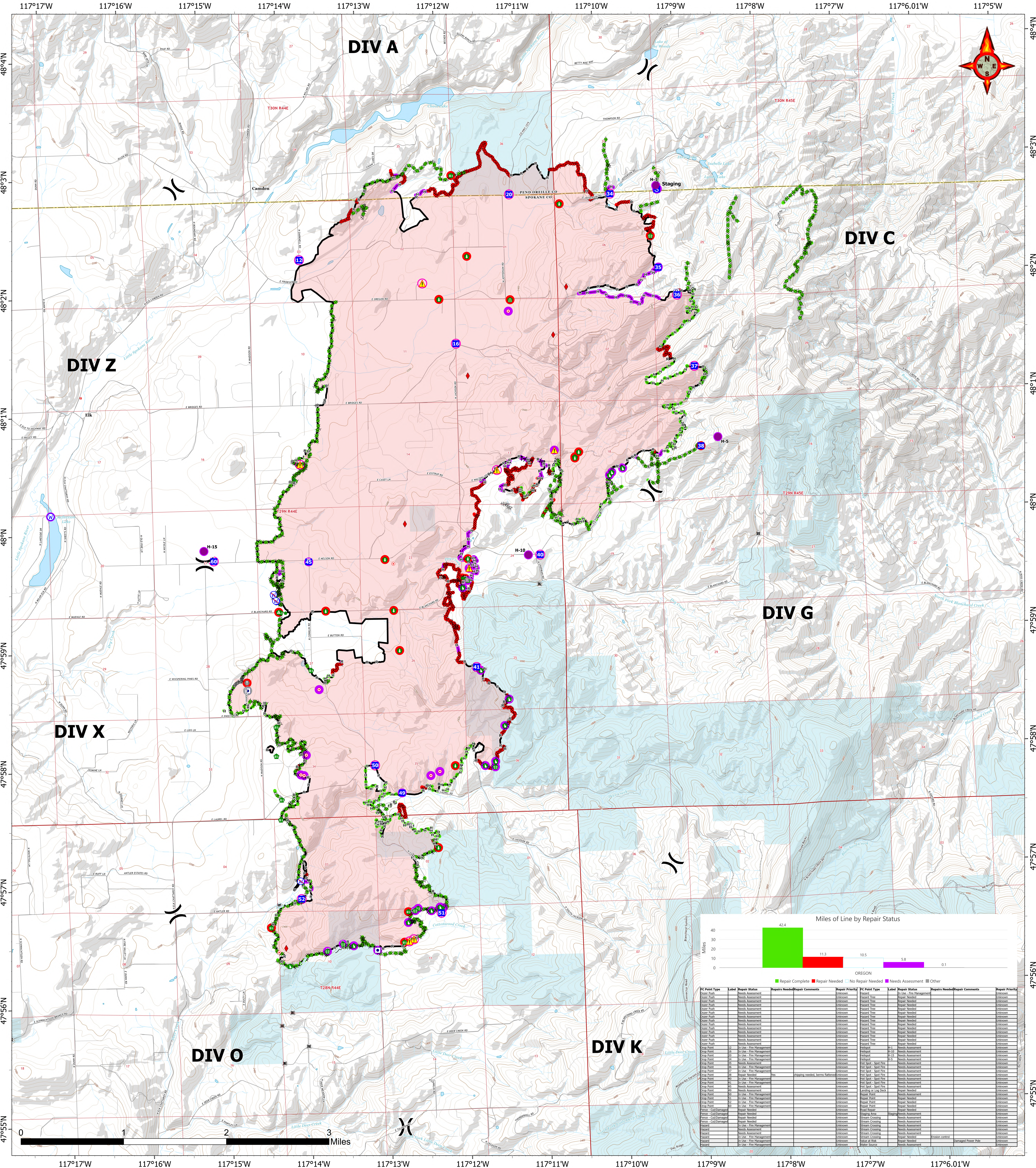


# REPAIR

# 09/06/2023

# OREGON

## Map Created: 9/6/2023 07:23



**WA-NES-001979**  
**OREGON**  
**REPAIR**

**10,817 acres**  
 as of 08/29/23  
 @ 1530

North American 1983  
 Datum.  
 Lat/Long Grid

- Other Property
- Pump
- Helispot
- Division Break
- Drop Point
- Staging Area
- Hot Spot - Spot Fire
- Value at Risk
- Other
- Bridge
- Stream Crossing
- Road Repair
- Repair Point
- Landing or Log Deck
- Hazard Tree
- Fence - Cut/Damaged
- Dozer Push
- Hazard
- Water Source
- Restricted Water Source
- IR Isolated Heat Source
- Completed Dozer Line
- Completed Fuel Break
- Completed Hand Line

- Completed Mixed Construction Line
- Completed Plow Line
- Completed Road as Line
- Contained
- State

- Repair Status**
- In Use - Fire Management
  - Needs Assessment
  - Repair Needed
  - Assessment
  - Repair Complete
  - Repair Needed
  - Completed - Inspected
  - No Repair Needed
  - Other - See Comments

