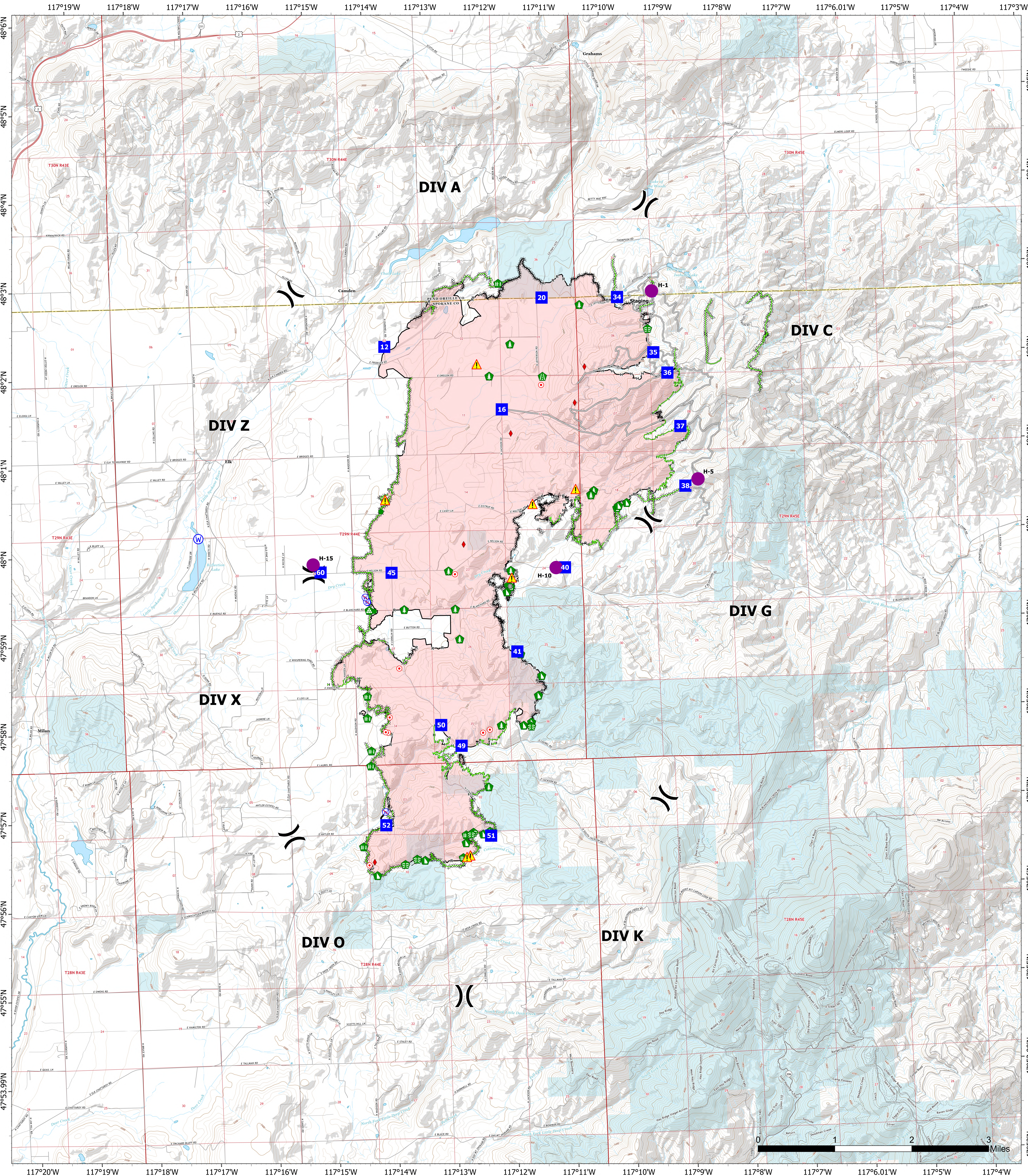


Map Created: 9/6/2023 07:00



OREGON OPERATIONS
WA- NES-001979

10,817 acres
 as of 08/29/23 @
 1530
 North American 1983 Datum.
 LatLong Grid

- Pump
- Helispot
- Division Break
- Drop Point
- Staging Area
- Hot Spot - Spot Fire
- Bridge
- Stream Crossing
- Road Repair
- Repair Point
- Landing or Log Deck
- Hazard Tree
- Fence - Cut/Damaged
- Dozer Push
- Hazard
- Water Source
- Restricted Water Source
- IR Isolated Heat Source (9/05/2023 @ 21:16)
- Completed Dozer Line
- Completed Fuel Break
- Completed Hand Line
- Completed Mixed Construction Line
- Completed Plow Line
- Completed Road as Line
- Access or Improved Road
- Repair Complete
- Other
- Wildfire Daily Fire Perimeter
- State

