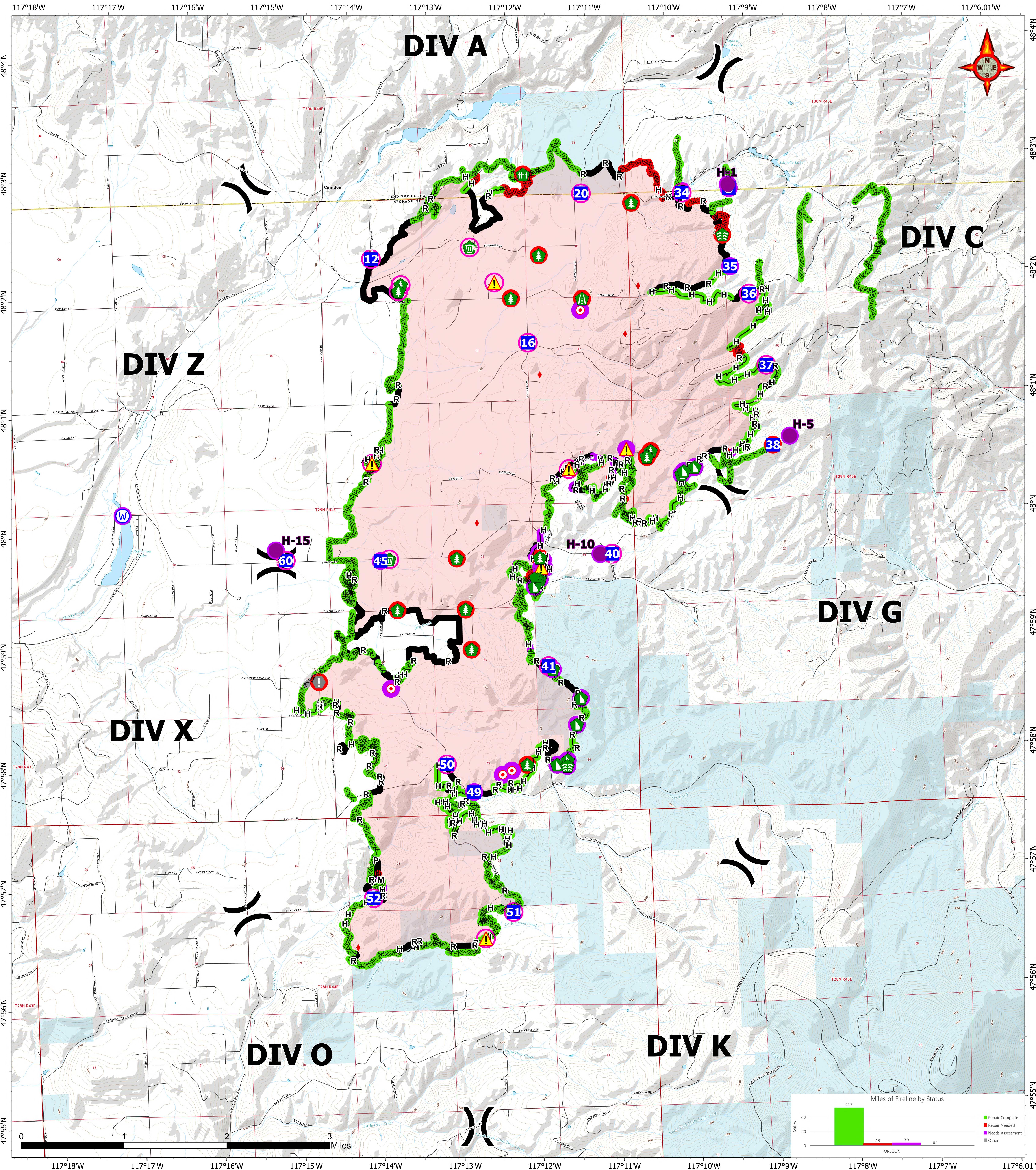


BRIEFING

09/08/2023

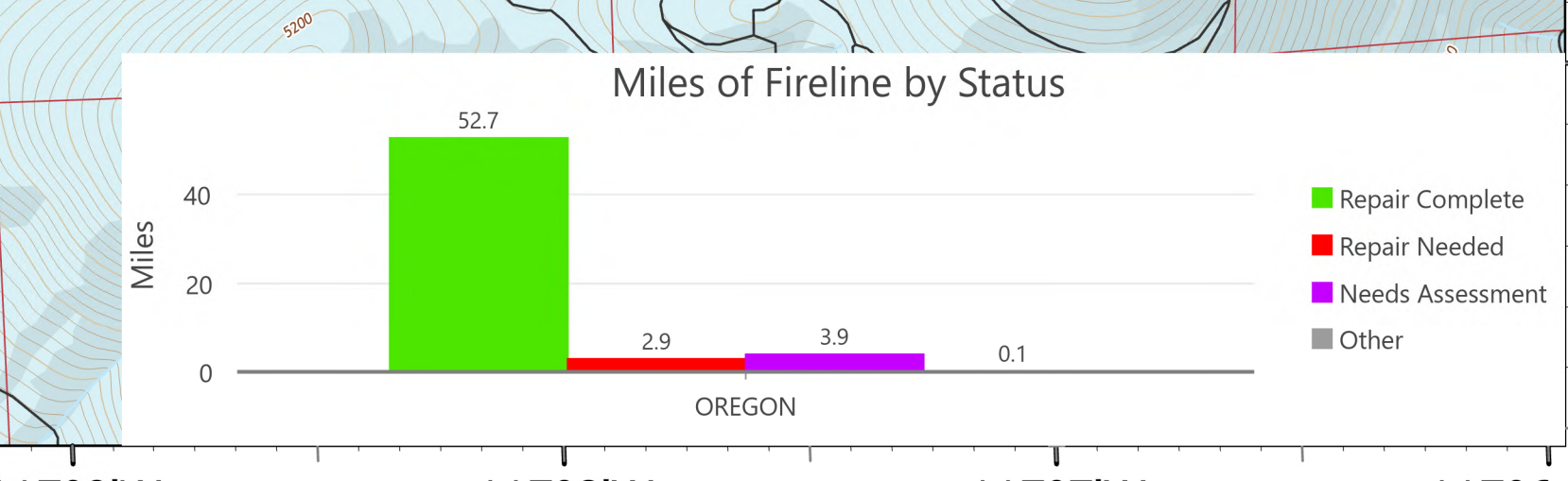
OREGON

Map Created: 9/7/2023 20:31



WA-NES-001979 10,817 acres as of 08/29/23 @ 1530
OREGON North American 1983 Datum, LatLong Grid
BRIEFING/REPAIR

-) Division Break
- Helispot
- Drop Point
- ⊕ Staging Area
- ⊕ Hot Spot - Spot Fire
- ⊕ Value at Risk
- ⊕ Stream Crossing
- ⊕ Road Repair
- ⊕ Repair Point
- ⊕ Hazard Tree
- ⊕ Fence - Cut/Damaged
- ⊕ Dozer Push
- ⊕ Clean Up Area
- ⊕ Hazard
- ⊕ Water Source
- ⊕ IR Isolated Heat Source (09/05/2023 @22:16)
- ⊕ Completed Dozer Line
- ⊕ Completed Hand Line
- M- Completed Mixed Construction Line
- P- Completed Plow Line
- R- Completed Road as Line
- Contained
- State



Repair Status	
● In Use - Fire Management (20)	● Repair Needed (27)
● Needs Assessment (26)	● Completed - Inspected (240)
● Repair Needed (20)	● Other - See Comments (1)
● Needs Assessment (36)	

