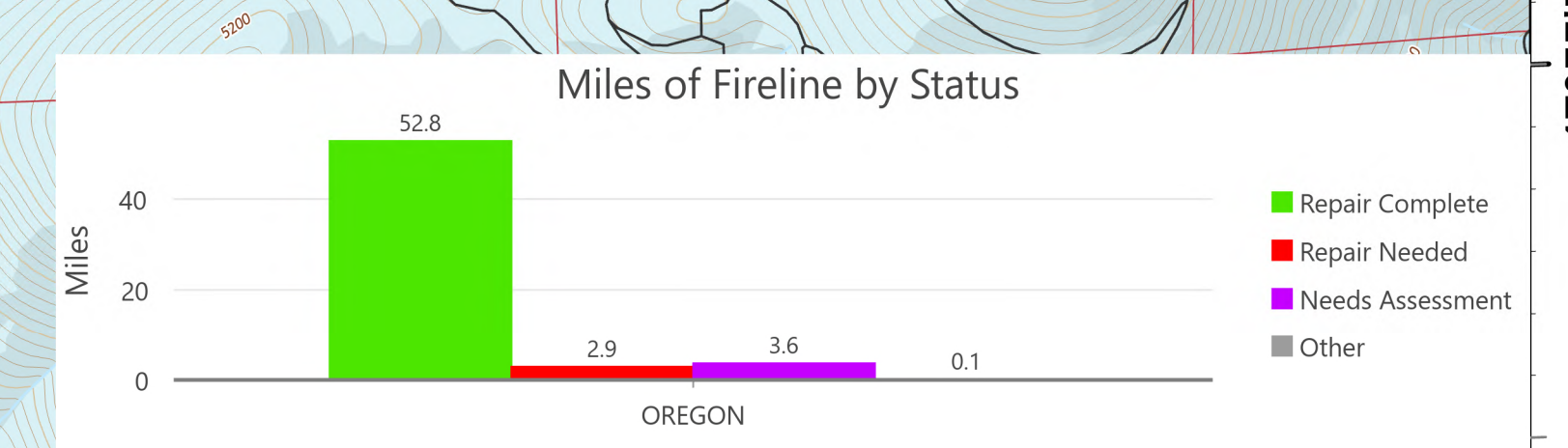
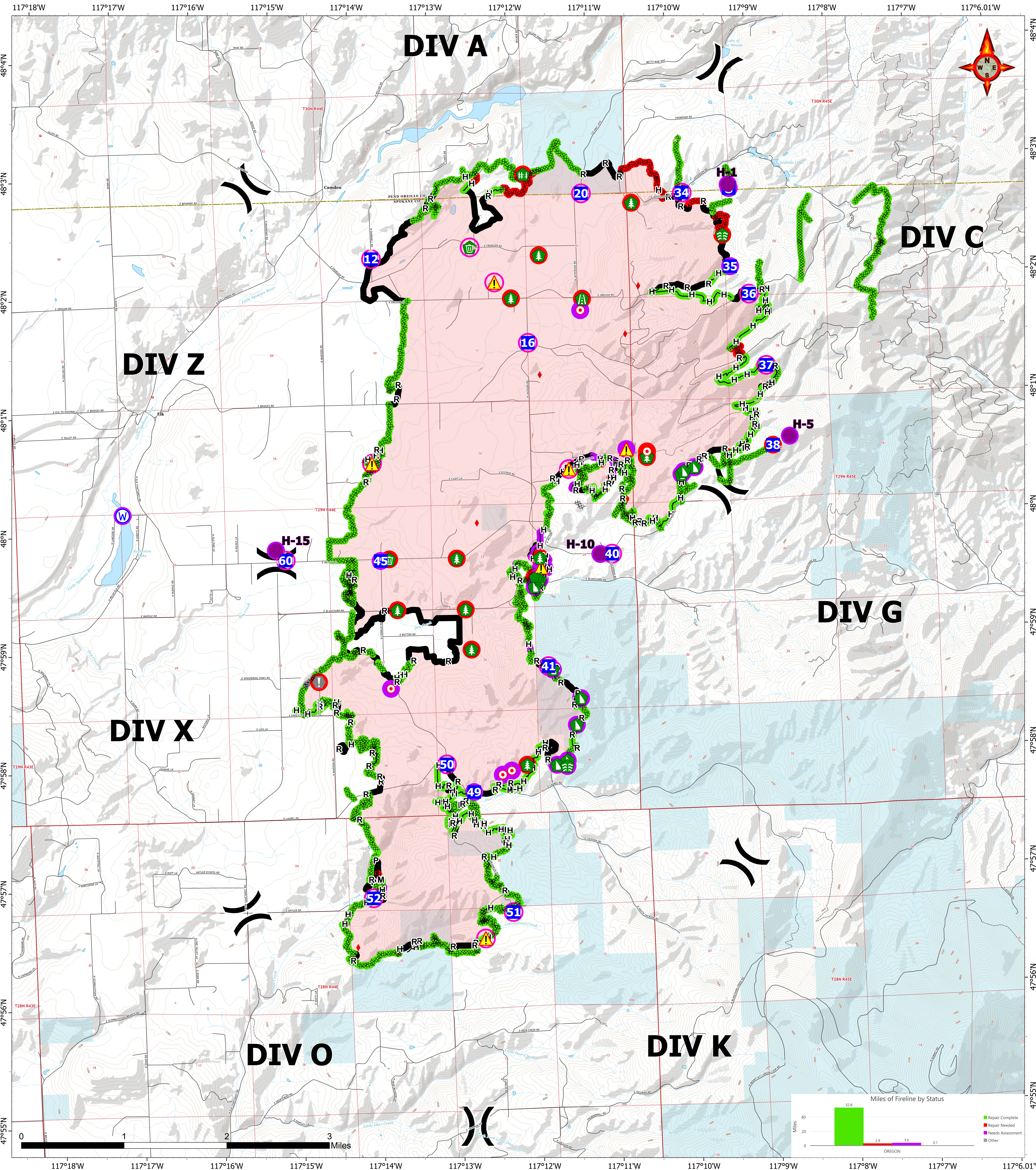


# BRIEFING

# 09/09/2023

# OREGON

Map Created: 9/8/2023 20:59



**WA-NES-001979** 10,817 acres as of 08/29/23 @ 1530  
**OREGON** North American 1983 Datum, LatLong Grid  
**BRIEFING/REPAIR**

- ( ) Division Break
- Helispot
- Drop Point
- Ⓢ Staging Area
- ⊙ Hot Spot - Spot Fire
- ⊙ Value at Risk
- ⊙ Stream Crossing
- ⊙ Road Repair
- ⊙ Repair Point
- ⊙ Hazard Tree
- ⊙ Fence - Cut/Damaged
- ⊙ Dozer Push
- ⊙ Clean Up Area
- ⊙ Hazard
- ⊙ Water Source
- ⊙ IR Isolated Heat Source (09/05/2023 @22:16)
- ⊙ Completed Dozer Line
- ⊙ Completed Hand Line
- M- Completed Mixed Construction Line
- P- Completed Plow Line
- R- Completed Road as Line
- Contained
- State

Repair Status	
○ In Use - Fire Management (17)	○ Repair Needed (26)
○ Needs Assessment (26)	○ Completed - Inspected (242)
○ Repair Needed (21)	○ Other - See Comments (1)
○ Needs Assessment (33)	

