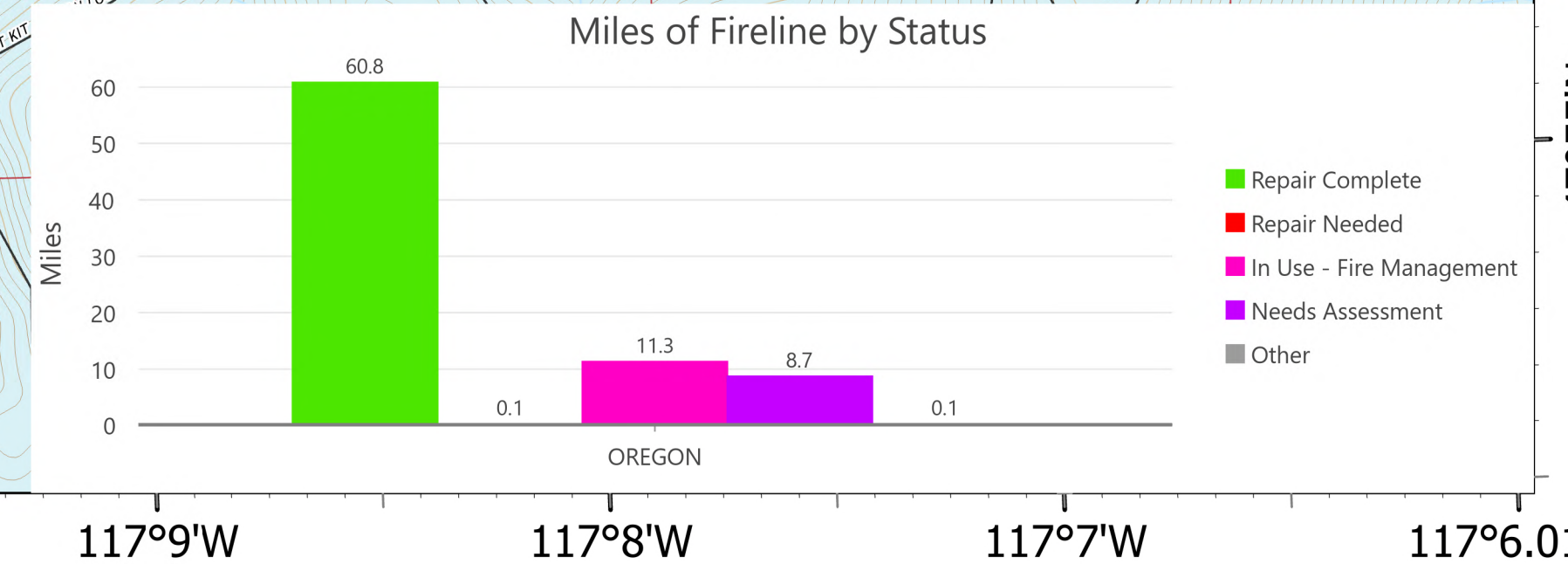
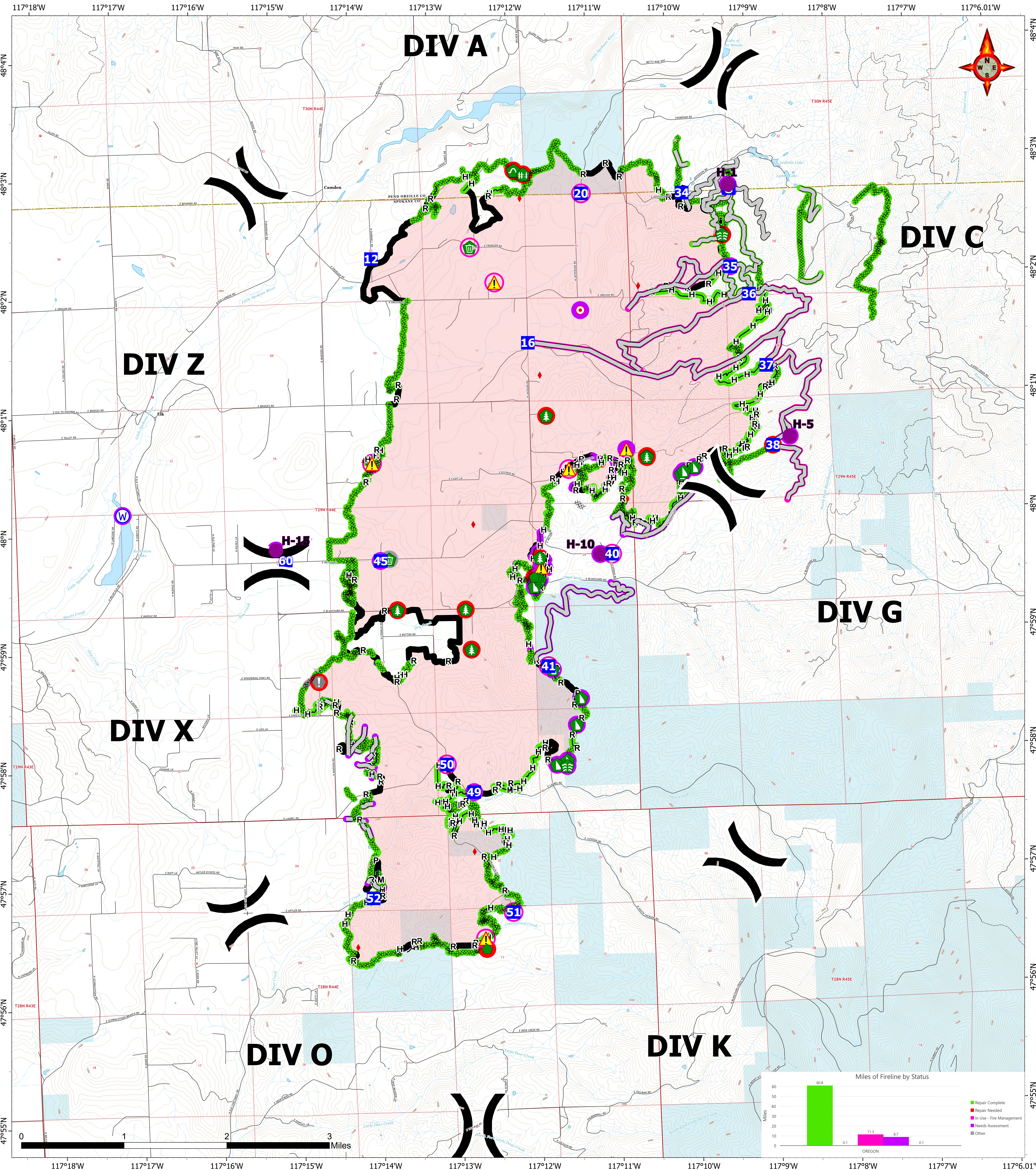


BRIEFING

09/12/2023

OREGON

Map Created: 9/11/2023 18:55



WA-NES-001979 10,817 acres as of 08/29/23 @ 1530
OREGON North American 1983 Datum, LatLong Grid
BRIEFING/REPAIR

- () Division Break
- Helispot
- () Division Break
- Drop Point
- Staging Area
- Hot Spot - Spot Fire
- Value at Risk
- Stream Crossing
- Repair Point
- Hazard Tree
- Fence - Cut/Damaged
- Dozer Push
- Culvert
- Clean Up Area
- Hazard
- Water Source
- ◆ IR Isolated Heat Source (09/09/2023 @19:15)
- ⊗ Completed Dozer Line
- ⊕ Completed Hand Line
- ⊖ Completed Mixed Construction Line
- ⊙ Completed Plow Line
- R- Completed Road as Line
- Access or Improved Road
- Contained
- State

Repair Status	
● In Use - Fire Management (10)	● Needs Assessment (49)
● Needs Assessment (23)	● Repair Needed (11)
● Repair Needed (16)	● Completed - Inspected (273)
● Other - See Comments (1)	● Other - See Comments (1)
● In Use - Fire Management (11)	

