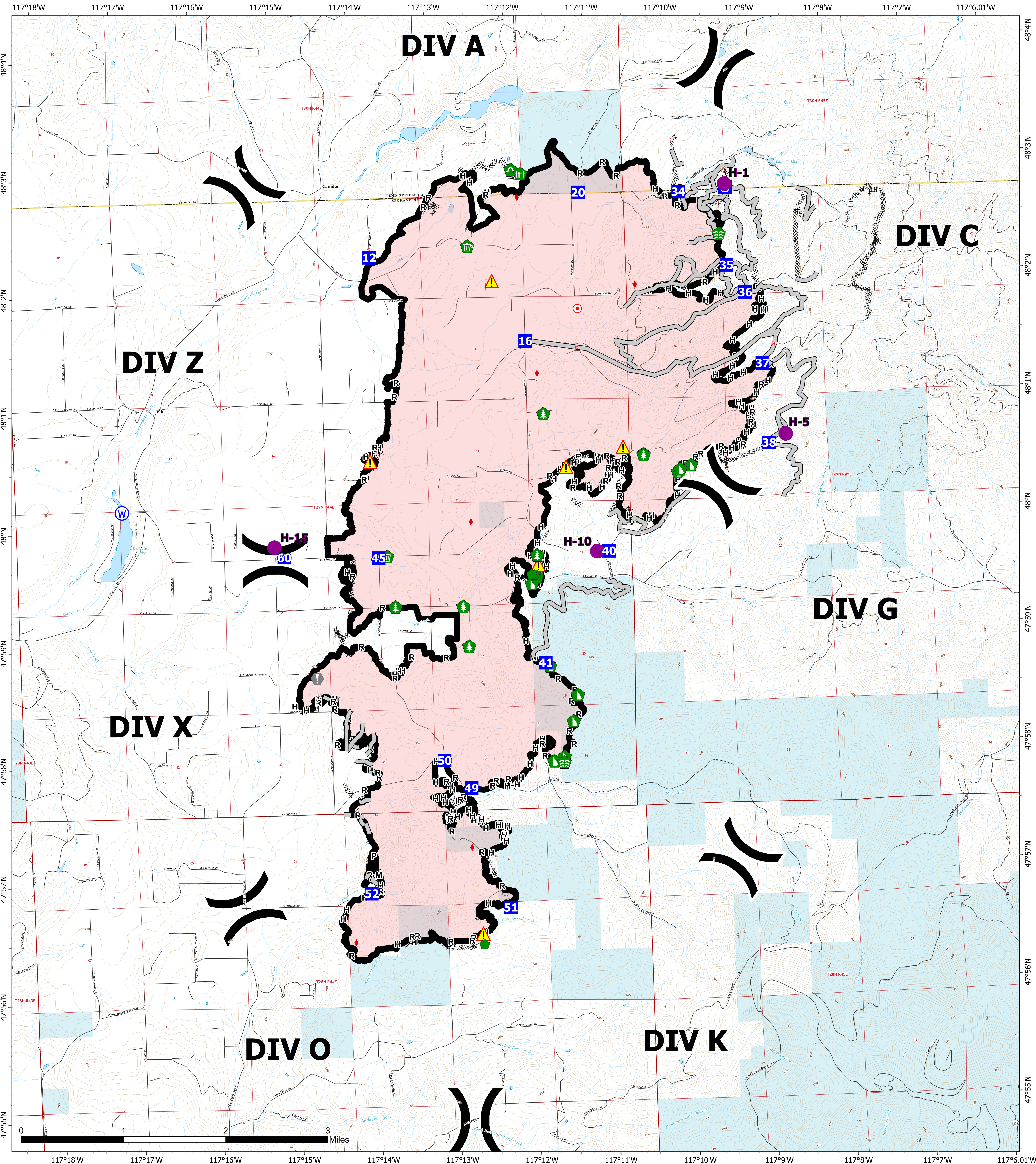


BRIEFING

09/12/2023

OREGON

Map Created: 9/11/2023 20:29



WA-NES-001979
OREGON
BRIEFING

10,817 acres
as of 08/29/23
@ 1530
 North American 1983
 Datum.
 LatLong Grid

- () Division Break
- () Helispot
- () Division Break
- () Drop Point
- () Staging Area

- Hot Spot - Spot Fire
- Value at Risk
- Stream Crossing
- Repair Point
- Hazard Tree

- Fence - Cut/Damaged
- Dozer Push
- Culvert
- Clean Up Area
- Hazard

- Water Source
- IR Isolated Heat Source (09/09/2023 @19:15)
- ⊗ Completed Dozer Line
- H- Completed Hand Line

- M- Completed Mixed Construction Line
- P- Completed Plow Line
- R- Completed Road as Line
- Access or Improved Road
- Contained State

