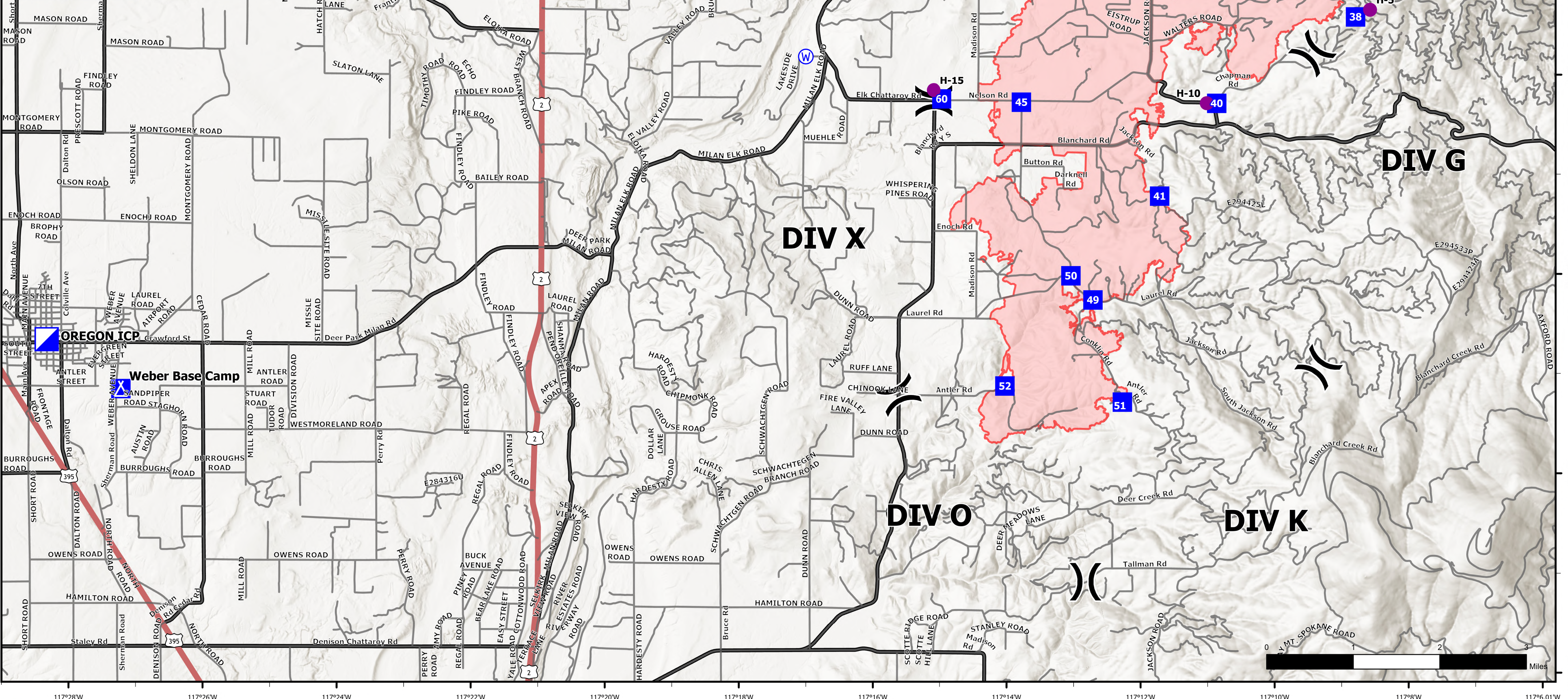


FC Point Type	Label	Latitude WGS84 DDM	Longitude WGS84 DDM
Camp	Weber Base Camp	47° 56.797' N	117° 27.245' W
Drop Point	40	47° 59.704' N	117° 10.885' W
Drop Point	20	48° 02.756' N	117° 11.120' W
Drop Point	60	47° 59.740' N	117° 14.999' W
Drop Point	50	47° 57.971' N	117° 13.057' W
Drop Point	12	48° 02.261' N	117° 13.796' W
Drop Point	34	48° 02.732' N	117° 09.850' W
Drop Point	52	47° 56.862' N	117° 14.039' W
Drop Point	51	47° 56.704' N	117° 12.284' W
Drop Point	38	48° 00.575' N	117° 08.813' W
Drop Point	36	48° 01.859' N	117° 09.048' W
Drop Point	37	48° 01.252' N	117° 08.862' W
Drop Point	16	48° 01.510' N	117° 11.855' W
Drop Point	35	48° 02.096' N	117° 09.273' W
Drop Point	45	47° 59.710' N	117° 13.805' W
Drop Point	49	47° 57.730' N	117° 12.727' W
Drop Point	41	47° 58.772' N	117° 11.735' W
Helispot	H-1	48° 02.788' N	117° 09.267' W
Helispot	H-15	47° 59.828' N	117° 15.119' W
Helispot	H-10	47° 59.705' N	117° 11.034' W
Helispot	H-5	48° 00.647' N	117° 08.596' W
Incident Command Post	OREGON ICP	47° 57.290' N	117° 28.358' W
Staging Area	Staging	48° 02.757' N	117° 09.256' W



117°28'W 117°26'W 117°24'W 117°22'W 117°20'W 117°18'W 117°16'W 117°14'W 117°12'W 117°10'W 117°8'W 117°6'01'W

47°53.99'N 47°55'N 47°56'N 47°57'N 47°58'N 47°59'N 48°00'N 48°01'N 48°02'N 48°03'N 48°04'N

10,817 acres as of 08/29/23 @ 1530
North American 1983 Datum, Lat/Long Grid

Oregon Transportation WA-NES-001979

- Helispot
- Incident Command Post
- ⓧ Camp
- Ⓜ Water Source
- 3: Light-Duty Road/All-Weather/Improved
- Secondary Hwy
- DNR Transportation System
- Drop Point
- Ⓢ Staging Area
- Division Break
- ▭ Wildfire Daily Fire Perimeter

0 1 2 3 Miles