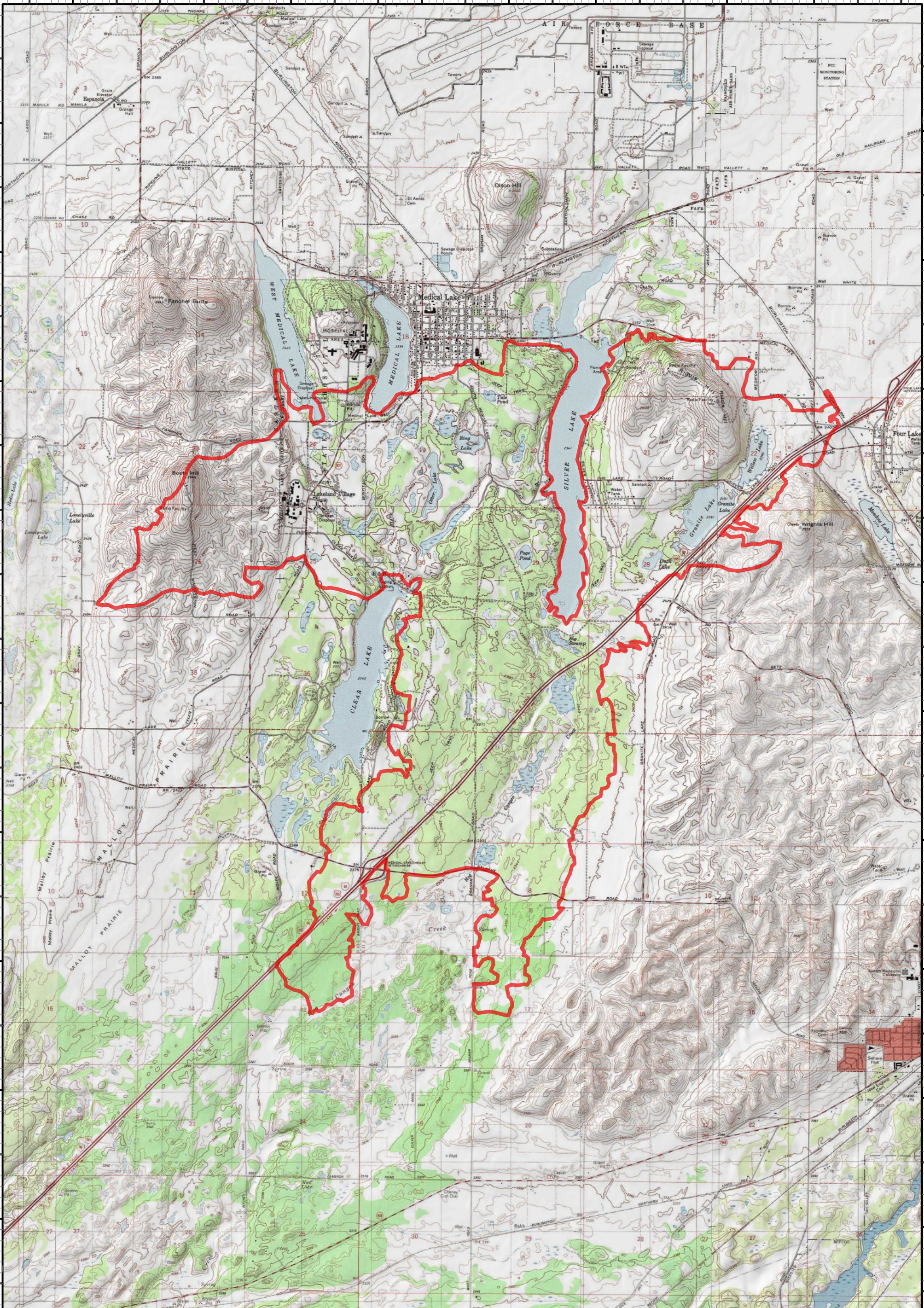


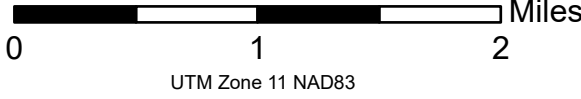
117°45'30"W 117°45'0"W 117°44'30"W 117°44'0"W 117°43'30"W 117°43'0"W 117°42'30"W 117°42'0"W 117°41'30"W 117°41'0"W 117°40'30"W 117°40'0"W 117°39'30"W 117°39'0"W 117°38'30"W 117°38'0"W 117°37'30"W 117°37'0"W 117°36'30"W 117°36'0"W 117°35'30"W



117°45'30"W 117°45'0"W 117°44'30"W 117°44'0"W 117°43'30"W 117°43'0"W 117°42'30"W 117°42'0"W 117°41'30"W 117°41'0"W 117°40'30"W 117°40'0"W 117°39'30"W 117°39'0"W 117°38'30"W 117°38'0"W 117°37'30"W 117°37'0"W 117°36'30"W 117°36'0"W 117°35'30"W

Gray
WA-NES-001974
Infrared Heat Sources
09/05/2023 21:08 hrs PDT
10,085 Interpreted Acres

- IR Isolated Heat Source
- ◻ IR Heat Perimeter
- ◆ Possible IR Heat Source



UTM Zone 11 NAD83



IRIN: E. Hucks
Print Date: 09/06/2023