

Air Ops

Sourdough

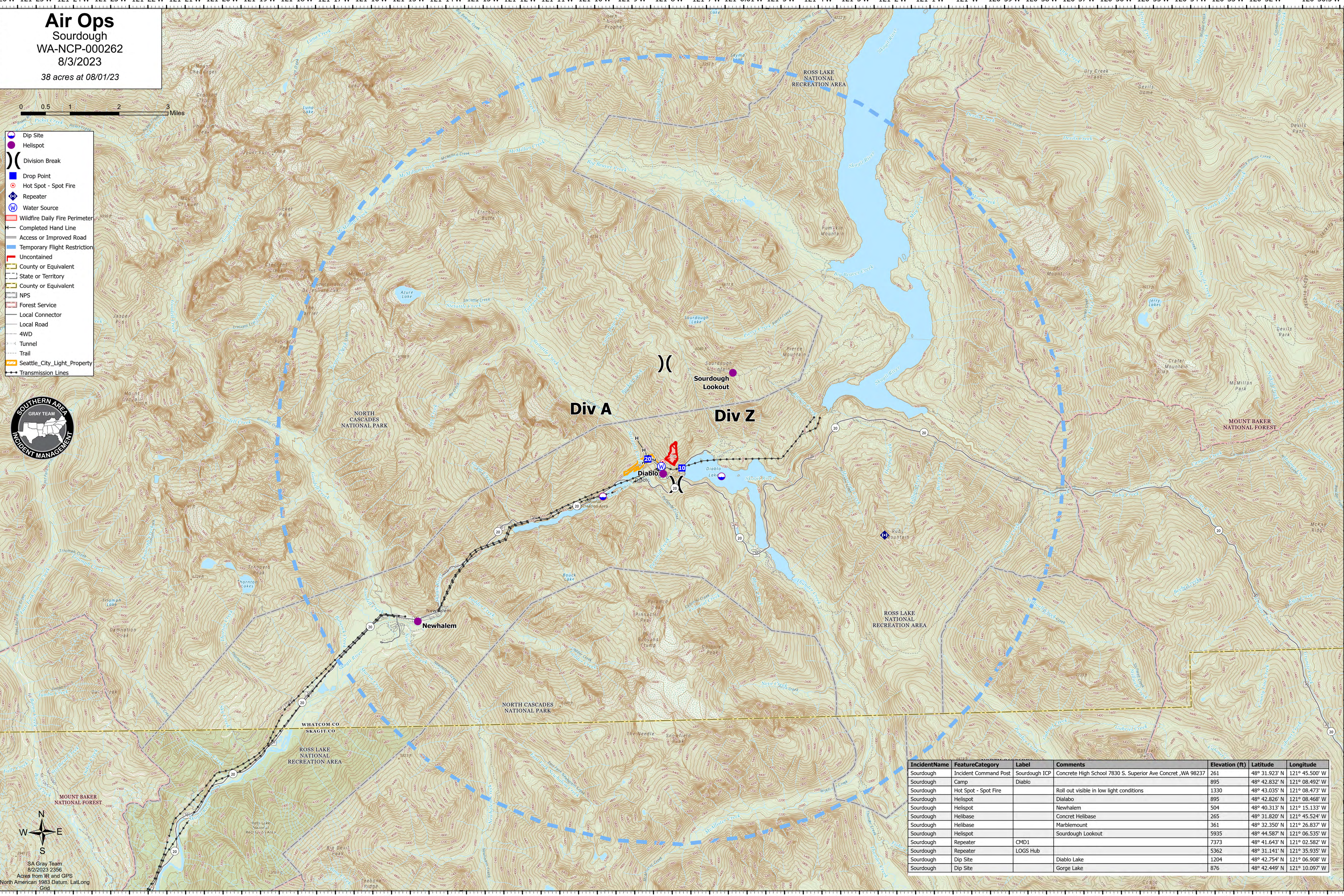
WA-NCP-000262
8/3/2023
38 acres at 08/01/23



- Dip Site
- Helispot
- Division Break
- Drop Point
- Hot Spot - Spot Fire
- Repeater
- Water Source
- Wildfire Daily Fire Perimeter
- Completed Hand Line
- Access or Improved Road
- Temporary Flight Restriction
- Uncontained
- County or Equivalent
- State or Territory
- County or Equivalent
- NPS
- Forest Service
- Local Connector
- Local Road
- 4WD
- Tunnel
- Trail
- Seattle_City_Light_Property
- Transmission Lines



SA Gray Team
8/2/2023 2356
Acres from IR and GPS
North American 1983 Datum, Lat/Long
Grid



IncidentName	FeatureCategory	Label	Comments	Elevation (ft)	Latitude	Longitude
Sourdough	Incident Command Post	Sourdough ICP	Concrete High School 7830 S. Superior Ave Concret, WA 98237	261	48° 31.923' N	121° 45.500' W
Sourdough	Camp	Diabolo		895	48° 42.832' N	121° 08.492' W
Sourdough	Hot Spot - Spot Fire		Roll out visible in low light conditions	1330	48° 43.035' N	121° 08.473' W
Sourdough	Helispot	Diabolo		895	48° 42.826' N	121° 08.468' W
Sourdough	Helispot	Newhalem		504	48° 40.313' N	121° 15.133' W
Sourdough	Helibase	Concret Helibase		265	48° 31.820' N	121° 45.524' W
Sourdough	Helibase	Marblemount		361	48° 32.350' N	121° 26.837' W
Sourdough	Helispot	Sourdough Lookout		5935	48° 44.587' N	121° 02.535' W
Sourdough	Repeater	CMD1		7373	48° 41.643' N	121° 02.582' W
Sourdough	Repeater	LOGS Hub		5362	48° 31.141' N	121° 35.935' W
Sourdough	Dip Site		Diabolo Lake	1204	48° 42.754' N	121° 06.908' W
Sourdough	Dip Site		Gorge Lake	876	48° 42.449' N	121° 10.097' W