

Air Ops

Sourdough

WA-NCP-000262

8/5/2023

2933 acres at 08/04/23 1917



- Dip Site
- Helispot
- Division Break
- Drop Point
- Hot Spot - Spot Fire
- Repeater
- Wildfire Daily Fire Perimeter
- Completed Hand Line
- Planned Hand Line
- Access or Improved Road
- Temporary Flight Restriction
- Uncontained
- NOCA Trails
- Paved Road
- Seattle_City_Light_Property
- Transmission Lines

Div C

Div Y

Div Z

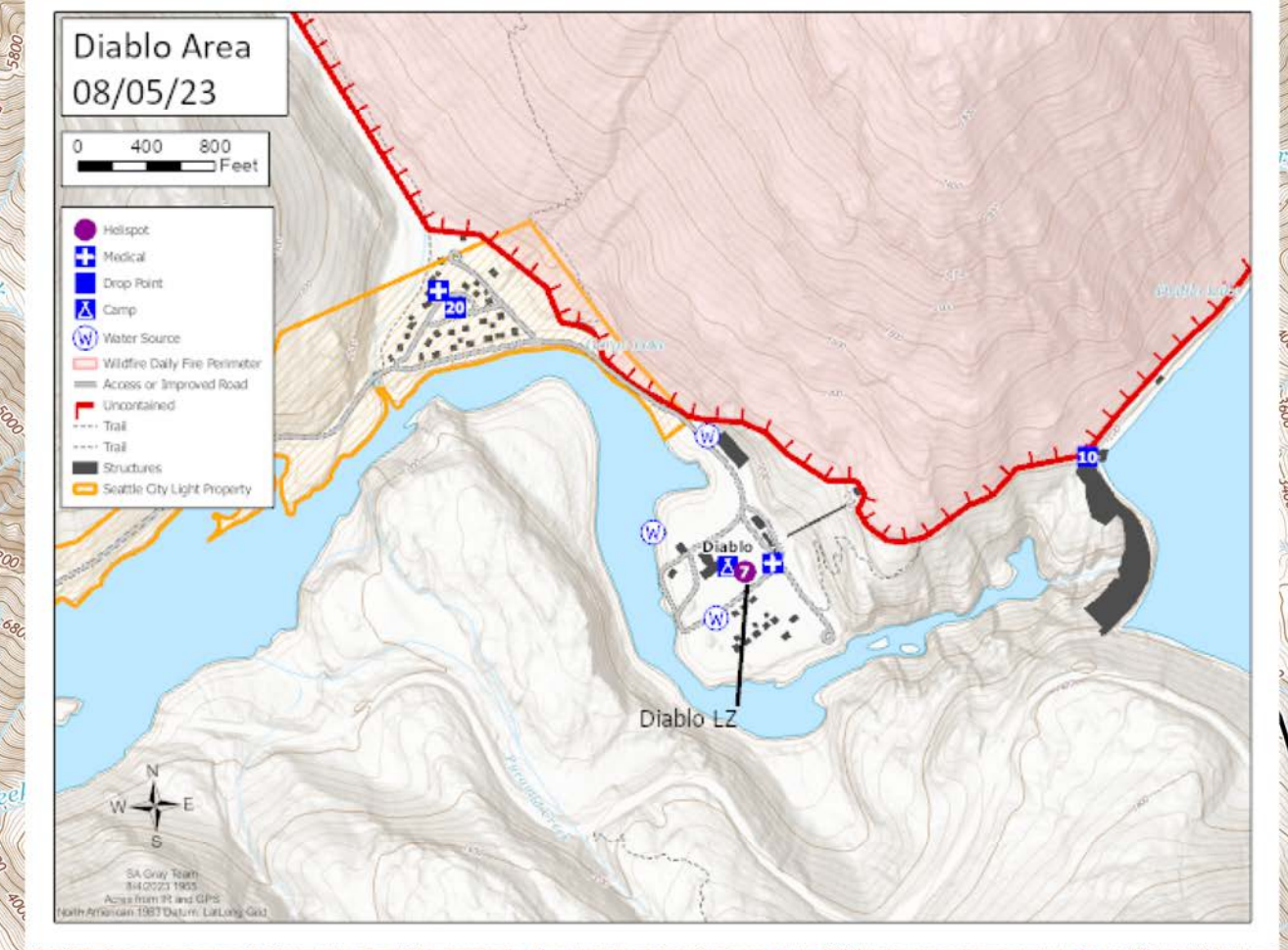
Div A

Div B

Newhalem LZ

Sourdough Lookout LZ

Diablo LZ



IncidentName	FeatureCategory	Label	Comments	Elevation (ft)	Latitude	Longitude
Sourdough	Incident Command Post	Sourdough ICP	Concrete High School 7830 S. Superior Ave Concret ,WA 98237	261	48° 31.923' N	121° 45.500' W
Sourdough	Hot Spot - Spot Fire		Roll out visible in low light conditions	1330	48° 43.035' N	121° 08.473' W
Sourdough	Helispot	7	Diablo LZ	895	48° 42.826' N	121° 08.468' W
Sourdough	Helispot	5	Newhalem LZ	504	48° 40.313' N	121° 15.133' W
Sourdough	Helibase	1	Concret Helibase	265	48° 31.820' N	121° 45.524' W
Sourdough	Helibase	3	Marblemount Helibase	361	48° 32.350' N	121° 26.837' W
Sourdough	Helispot	10	Sourdough Lookout LZ	5935	48° 44.587' N	121° 06.535' W
Sourdough	Repeater	CMD1		7373	48° 41.643' N	121° 02.582' W
Sourdough	Repeater	LOGS Hub		5362	48° 31.141' N	121° 35.935' W
Sourdough	Dip Site		Diablo Lake	1204	48° 42.754' N	121° 06.908' W
Sourdough	Dip Site		Gorge Lake	876	48° 42.449' N	121° 10.097' W



SA Gray Team
8/4/2023 2257
Acres from IR and GPS
North American 1983 Datum, Lat/Long
Grid