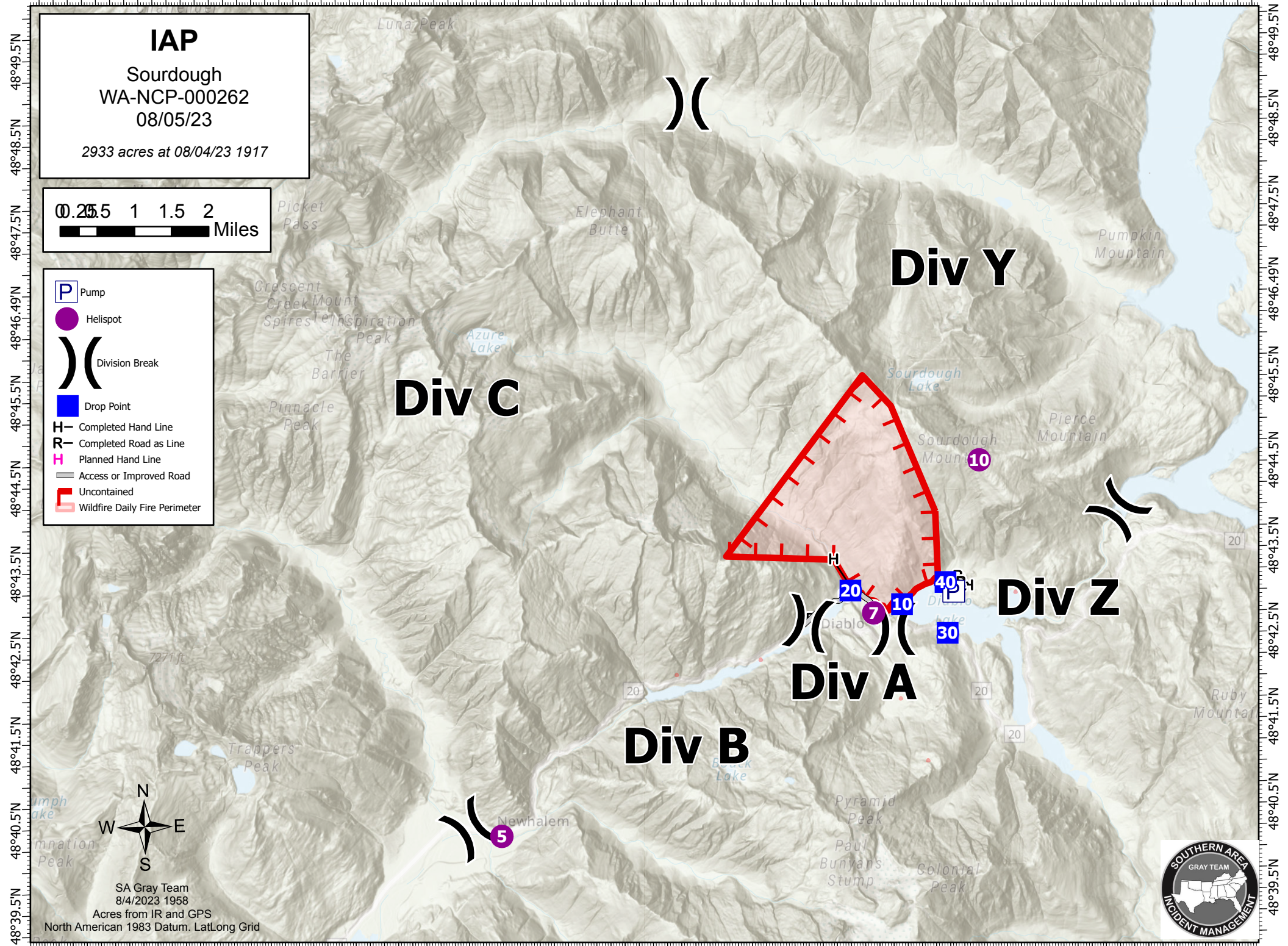
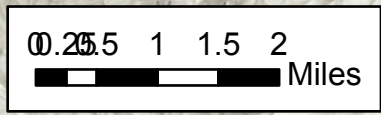


121°23'W 121°22'W 121°20.5'W 121°19'W 121°18'W 121°17'W 121°16'W 121°15'W 121°14'W 121°13'W 121°12'W 121°11'W 121°10'W 121°9'W 121°8'W 121°7'W 121°5.5'W 121°4'W 121°3'W 121°2'W



IAP
Sourdough
WA-NCP-000262
08/05/23
2933 acres at 08/04/23 1917



- Pump
- Helispot
- Division Break
- Drop Point
- Completed Hand Line
- Completed Road as Line
- Planned Hand Line
- Access or Improved Road
- Uncontained
- Wildfire Daily Fire Perimeter



SA Gray Team
8/4/2023 1958
Acres from IR and GPS
North American 1983 Datum. Lat/Long Grid



121°23.5'W 121°22'W 121°20.5'W 121°19'W 121°18'W 121°17'W 121°16'W 121°15'W 121°14'W 121°13'W 121°12'W 121°11'W 121°10'W 121°9'W 121°8'W 121°7'W 121°5.5'W 121°4'W 121°3'W 121°2'W