

121°10'W

121°8'W

IAP

Div A

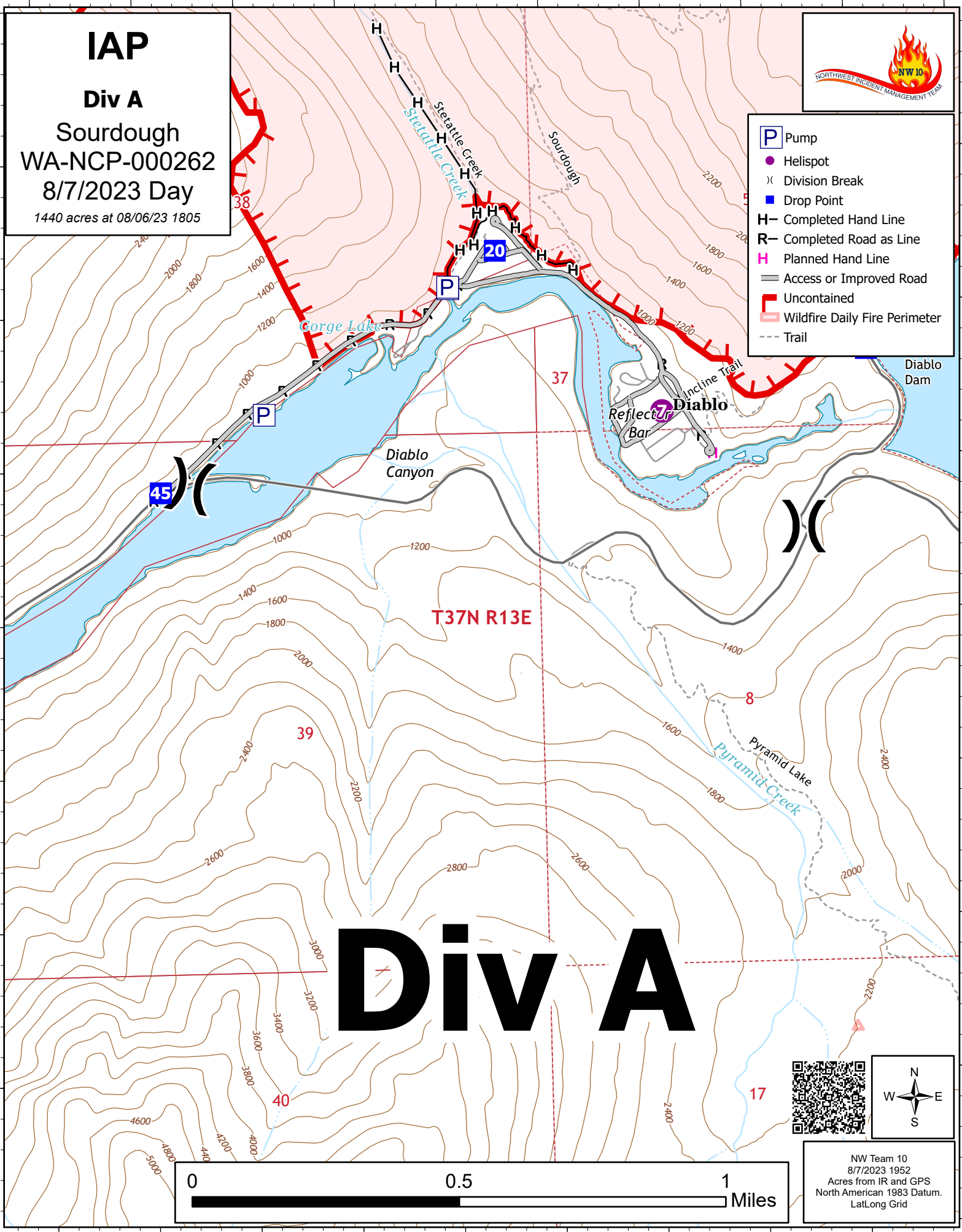
Sourdough
WA-NCP-000262

8/7/2023 Day

1440 acres at 08/06/23 1805

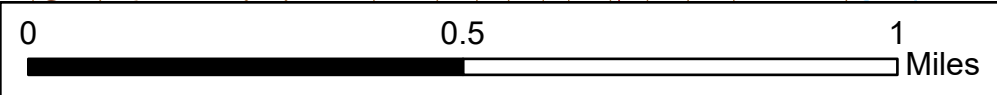


- P** Pump
- Helispot
- ⌘ Division Break
- B** Drop Point
- H** Completed Hand Line
- R** Completed Road as Line
- H** Planned Hand Line
- Access or Improved Road
- U** Uncontained
- Wildfire Daily Fire Perimeter
- - - Trail



T37N R13E

Div A



NW Team 10
8/7/2023 1952
Acres from IR and GPS
North American 1983 Datum.
LatLong Grid

121°10'W

121°8'W

48°42'N

48°42'N