

121°6.01'W

121°4'W

121°2'W

IAP

Div Y

Sourdough WA-NCP-000262 8/7/2023 Day

1440 acres at 08/06/23 1805



- P Pump
- E Water Tank
- Helispot
- X Division Break
- Drop Point
- Completed Hand Line
- Completed Road as Line
- Planned Road as Line
- Access or Improved Road
- - - Other
- Uncontained
- Wildfire Daily Fire Perimeter
- - - Trail

48°48'N

48°48'N

48°46'N

48°46'N

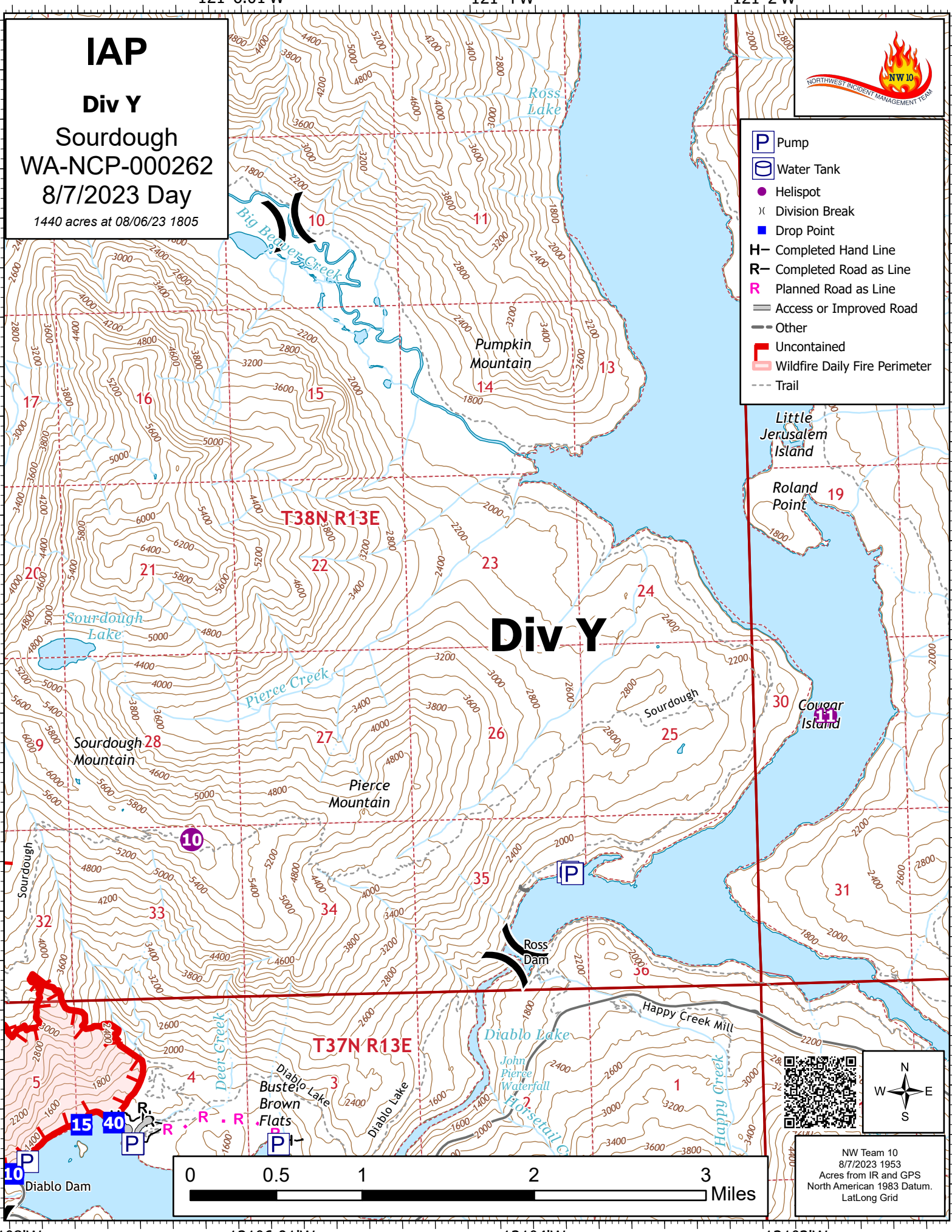
48°44'N

48°44'N

Div Y

T38N R13E

T37N R13E



NW Team 10
8/7/2023 1953
Acres from IR and GPS
North American 1983 Datum.
Lat/Long Grid

121°8'W

121°6.01'W

121°4'W

121°2'W