

121°12'W 121°10'W 121°8'W 121°6.01'W

# IAP

## Main

### Sourdough WA-NCP-000262

### 8/7/2023 Day

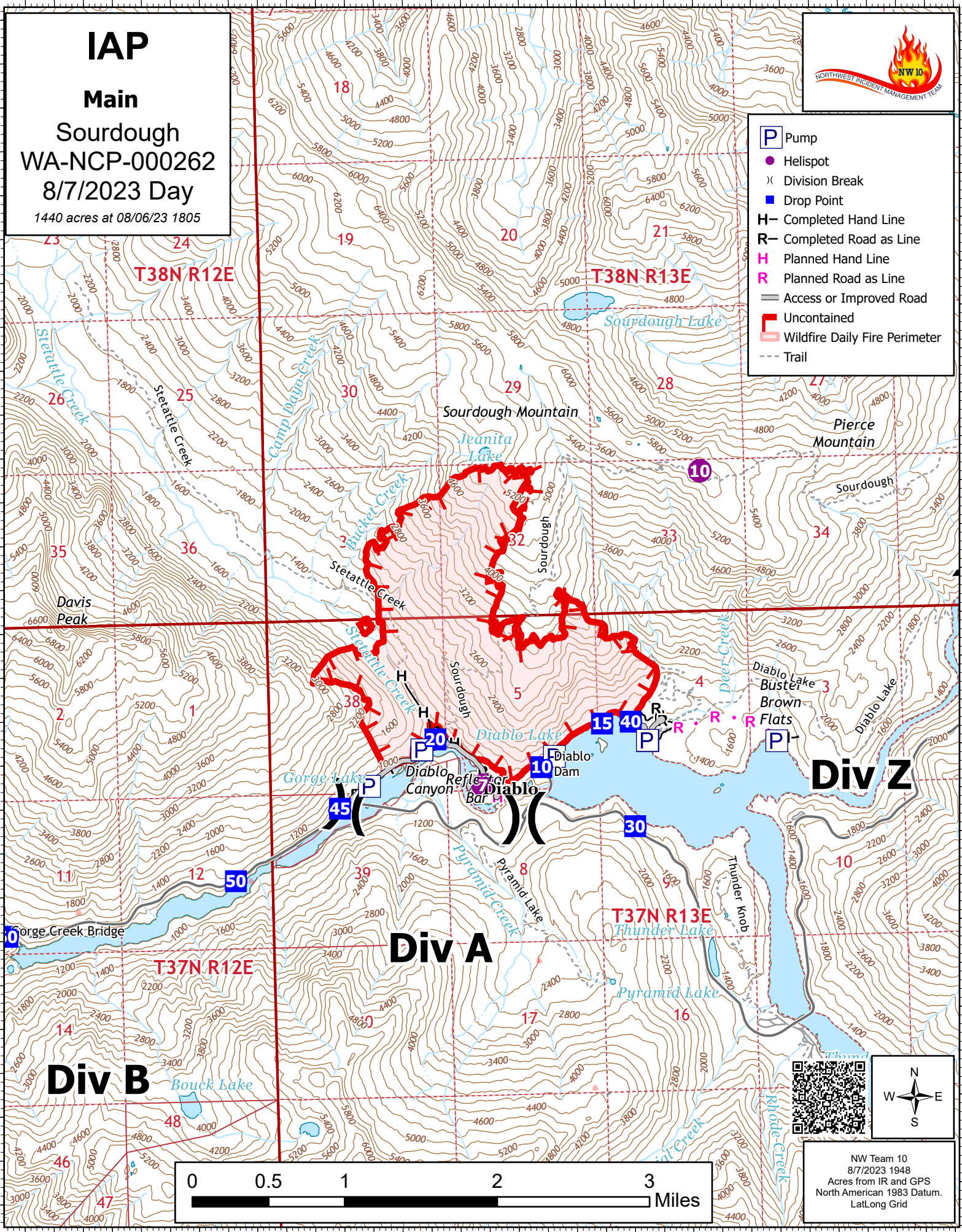
1440 acres at 08/06/23 1805



- P Pump
- Helispot
- ⊗ Division Break
- Drop Point
- H— Completed Hand Line
- R— Completed Road as Line
- H— Planned Hand Line
- R— Planned Road as Line
- Access or Improved Road
- Uncontained
- ▭ Wildfire Daily Fire Perimeter
- - - Trail

48°46'N  
48°44'N  
48°42'N

48°46'N  
48°44'N  
48°42'N



NW Team 10  
8/7/2023 1948  
Acres from IR and GPS  
North American 1983 Datum.  
Lat/Long Grid

121°12'W 121°10'W 121°8'W 121°6.01'W

121°10'W

121°8'W

# IAP

## Div A

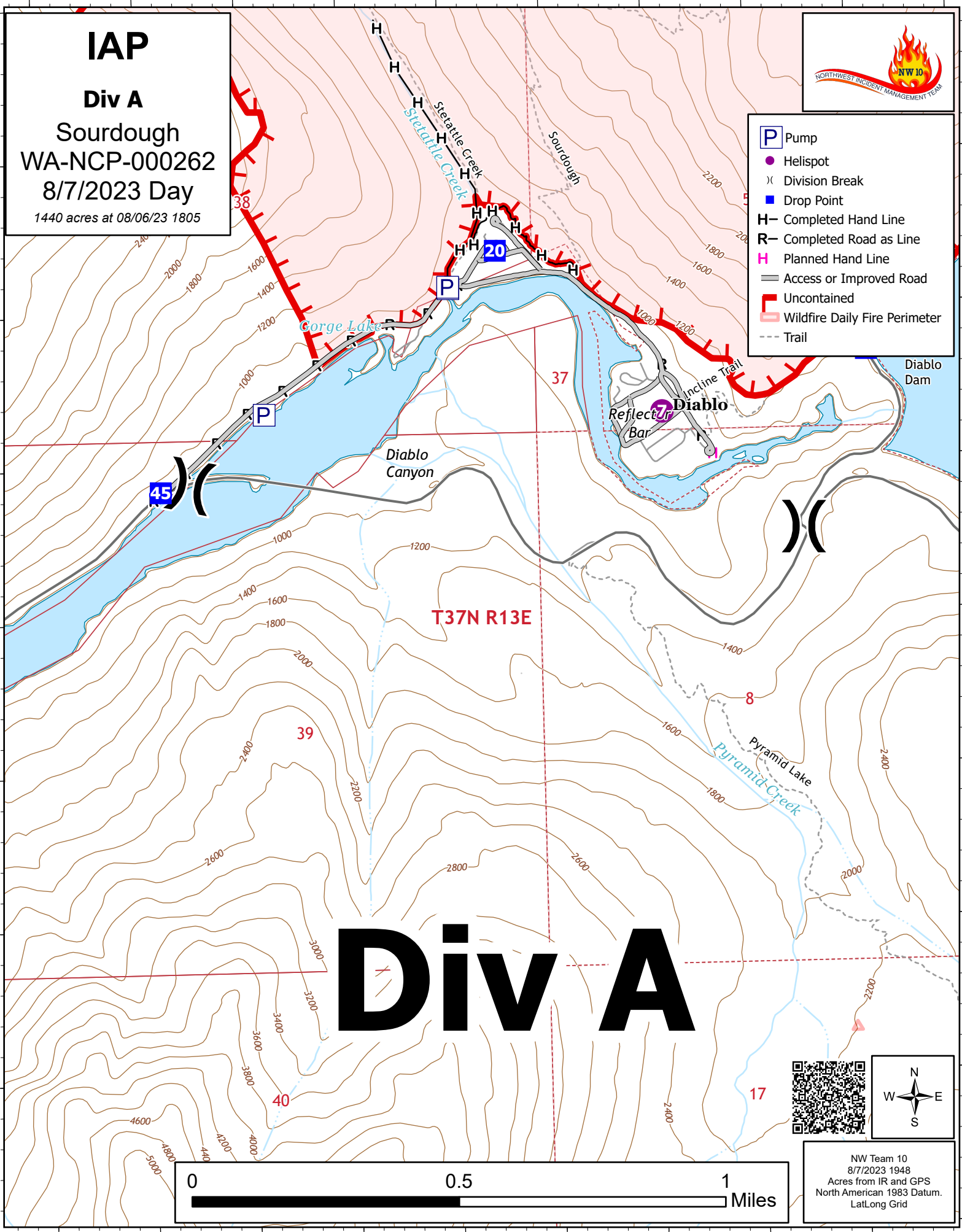
Sourdough  
WA-NCP-000262

8/7/2023 Day

1440 acres at 08/06/23 1805

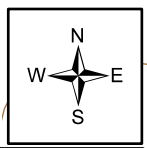
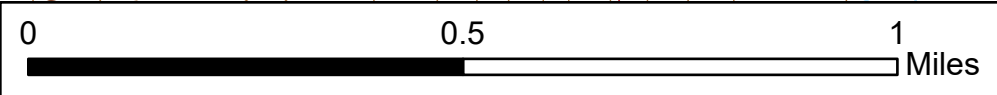


- P Pump
- Helispot
- ⌘ Division Break
- 45 Drop Point
- H— Completed Hand Line
- R— Completed Road as Line
- Planned Hand Line
- Access or Improved Road
- Uncontained
- Wildfire Daily Fire Perimeter
- - - Trail



T37N R13E

# Div A



NW Team 10  
8/7/2023 1948  
Acres from IR and GPS  
North American 1983 Datum.  
LatLong Grid

121°10'W

121°8'W

48°42'N

48°42'N

121°8'W

121°6.01'W

121°4'W

# IAP

## Div Z

### Sourdough WA-NCP-000262 8/7/2023 Day

1440 acres at 08/06/23 1805



- P Pump
- E Water Tank
- Helispot
- X Division Break
- Drop Point
- Completed Hand Line
- Completed Road as Line
- Planned Hand Line
- Planned Road as Line
- Access or Improved Road
- Other
- Uncontained
- Wildfire Daily Fire Perimeter
- Trail

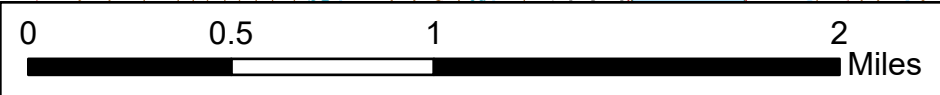
48°44'N

48°44'N

# Div Z

48°42'N

48°42'N



NW Team 10  
8/7/2023 1948  
Acres from IR and GPS  
North American 1983 Datum.  
LatLong Grid

121°8'W

121°6.01'W

121°4'W

121°6.01'W

121°4'W

121°2'W

# IAP

## Div Y

### Sourdough WA-NCP-000262 8/7/2023 Day

1440 acres at 08/06/23 1805



- P Pump
- E Water Tank
- Helispot
- X Division Break
- Drop Point
- Completed Hand Line
- Completed Road as Line
- Planned Road as Line
- Access or Improved Road
- Other
- Uncontained
- Wildfire Daily Fire Perimeter
- Trail

48°48'N

48°48'N

48°46'N

48°46'N

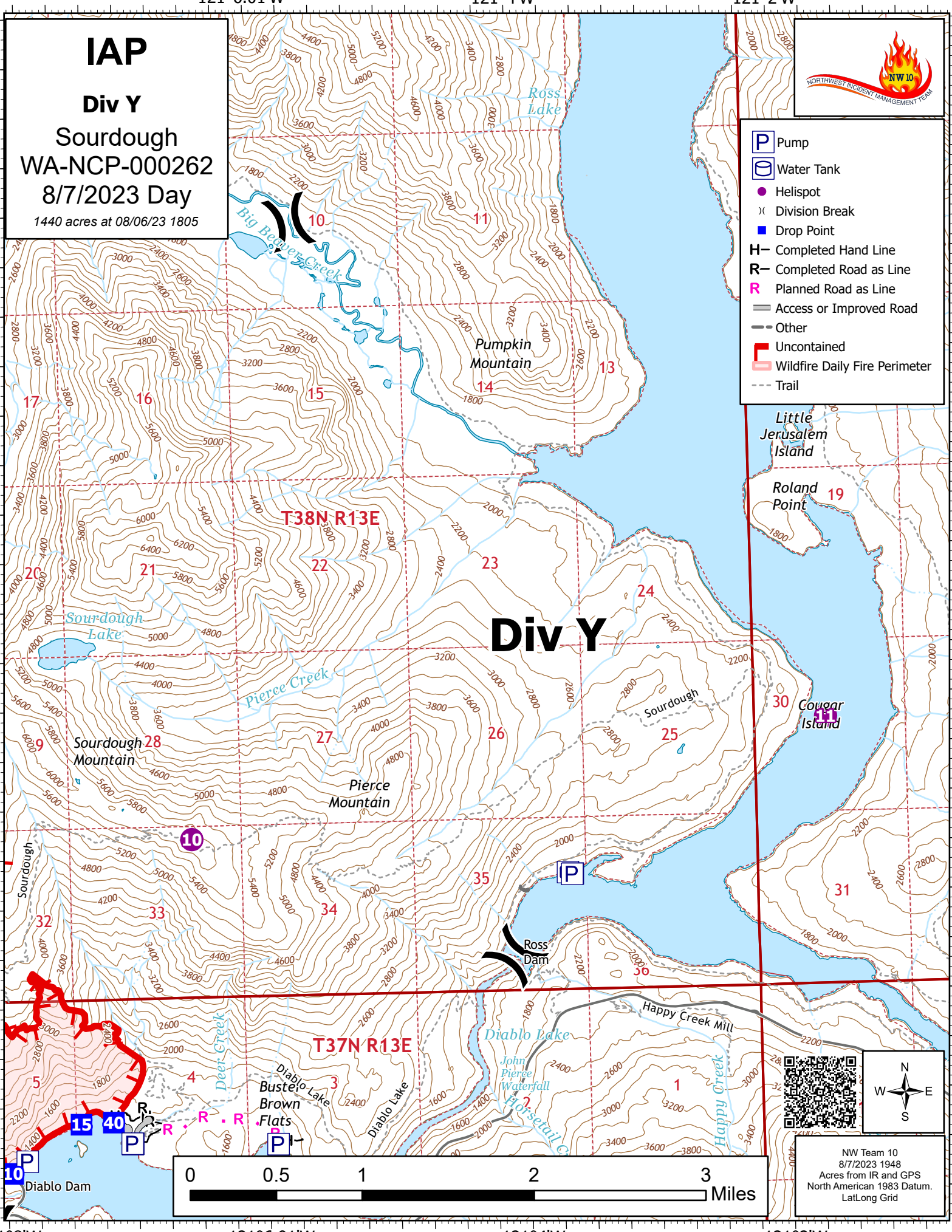
48°44'N

48°44'N

# Div Y

T38N R13E

T37N R13E



NW Team 10  
8/7/2023 1948  
Acres from IR and GPS  
North American 1983 Datum.  
Lat/Long Grid

121°8'W

121°6.01'W

121°4'W

121°2'W

121°16'W

121°14'W

121°12'W

121°10'W

# IAP

## Div B

Sourdough  
WA-NCP-000262  
8/7/2023 Day

1440 acres at 08/06/23 1805



- P Pump
- Helispot
- X Division Break
- ▣ Incident Command Post
- Drop Point
- H**— Completed Hand Line
- R**— Completed Road as Line
- Access or Improved Road
- Uncontained
- Wildfire Daily Fire Perimeter
- - - Trail

48°44'N

48°44'N

48°42'N

48°42'N

48°40'N

48°40'N

# Div B

# Div

Newhalem

Pyramid Peak

Paul Bunyans Stump

T38N R12E

T37N R12E

T37N R13E



NW Team 10  
8/7/2023 1948  
Acres from IR and GPS  
North American 1983 Datum.  
LatLong Grid

121°16'W

121°14'W

121°12'W

121°10'W