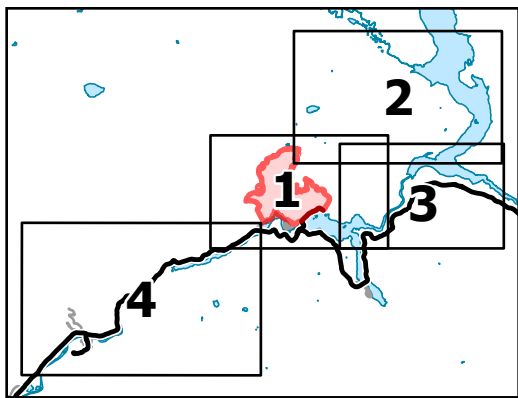
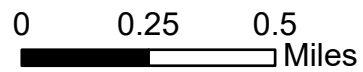


# Operations

Sourdough  
WA-NCP-000262  
08/06/23 Day

1440 acres at 08/06/23 1805



Page Number: 1

- Dip Site
- Helispot
- Division Break
- Medical
- Drop Point
- Value at Risk
- Other
- Gate
- Hazard
- Water Source
- Wildfire Daily Fire Perimeter
- Completed Hand Line
- Completed Road as Line
- Planned Hand Line
- Planned Road as Line
- Access or Improved Road
- Uncontained
- Structures
- Historic Structure
- Transmission Lines
- Fuels Treatments
- Fire History
- Seattle City Light Property
- Trail



8/7/2023 2036  
Acres from IR and GPS  
North American 1983 Datum.  
Lat/Long Grid

