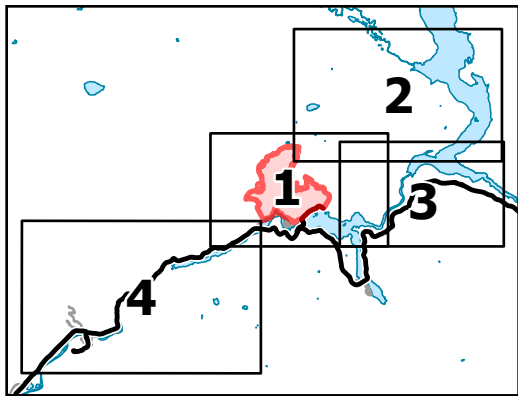


Operations

Sourdough
WA-NCP-000262
08/06/23 Day
1440 acres at 08/06/23 1805

0 0.25 0.5 Miles

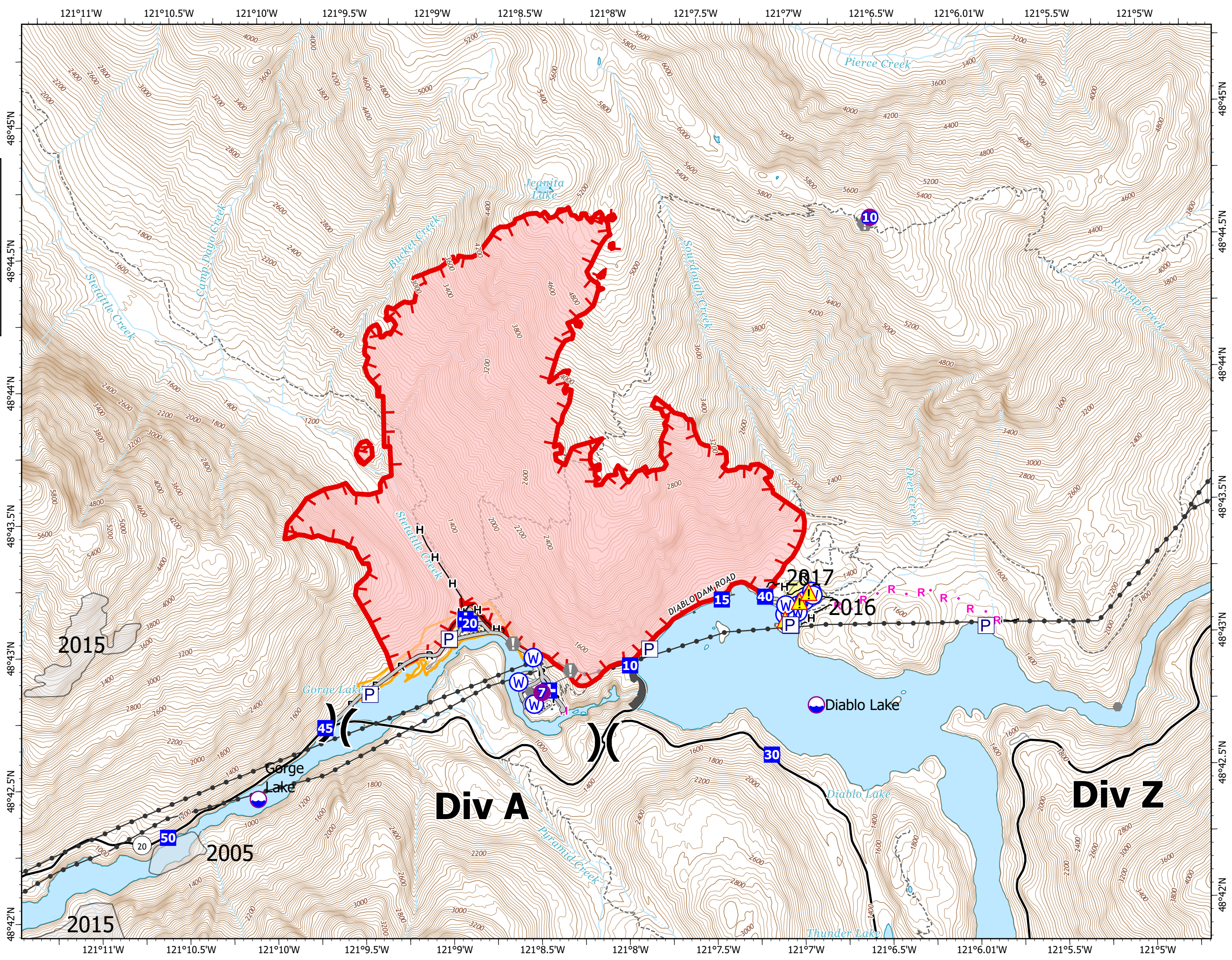


Page Number: 1

- Dip Site
- Helispot
- Division Break
- Medical
- Drop Point
- Value at Risk
- Other
- Gate
- Hazard
- Water Source
- Wildfire Daily Fire Perimeter
- Completed Hand Line
- Completed Road as Line
- Planned Hand Line
- Planned Road as Line
- Access or Improved Road
- Uncontained
- Structures
- Historic Structure
- Transmission Lines
- Fuels Treatments
- Fire History
- Seattle City Light Property
- Trail



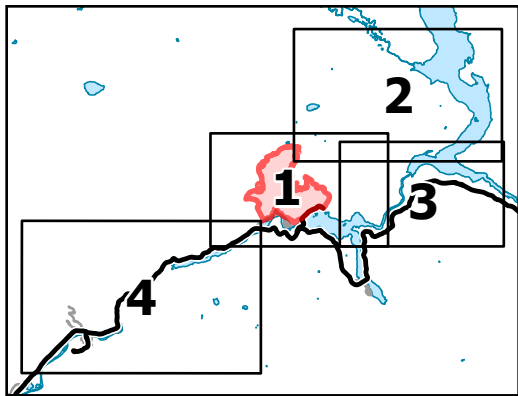
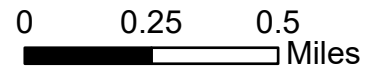
8/7/2023 2034
Acres from IR and GPS
North American 1983 Datum.
Lat/Long Grid



Operations

Sourdough
WA-NCP-000262
08/06/23 Day

1440 acres at 08/06/23 1805

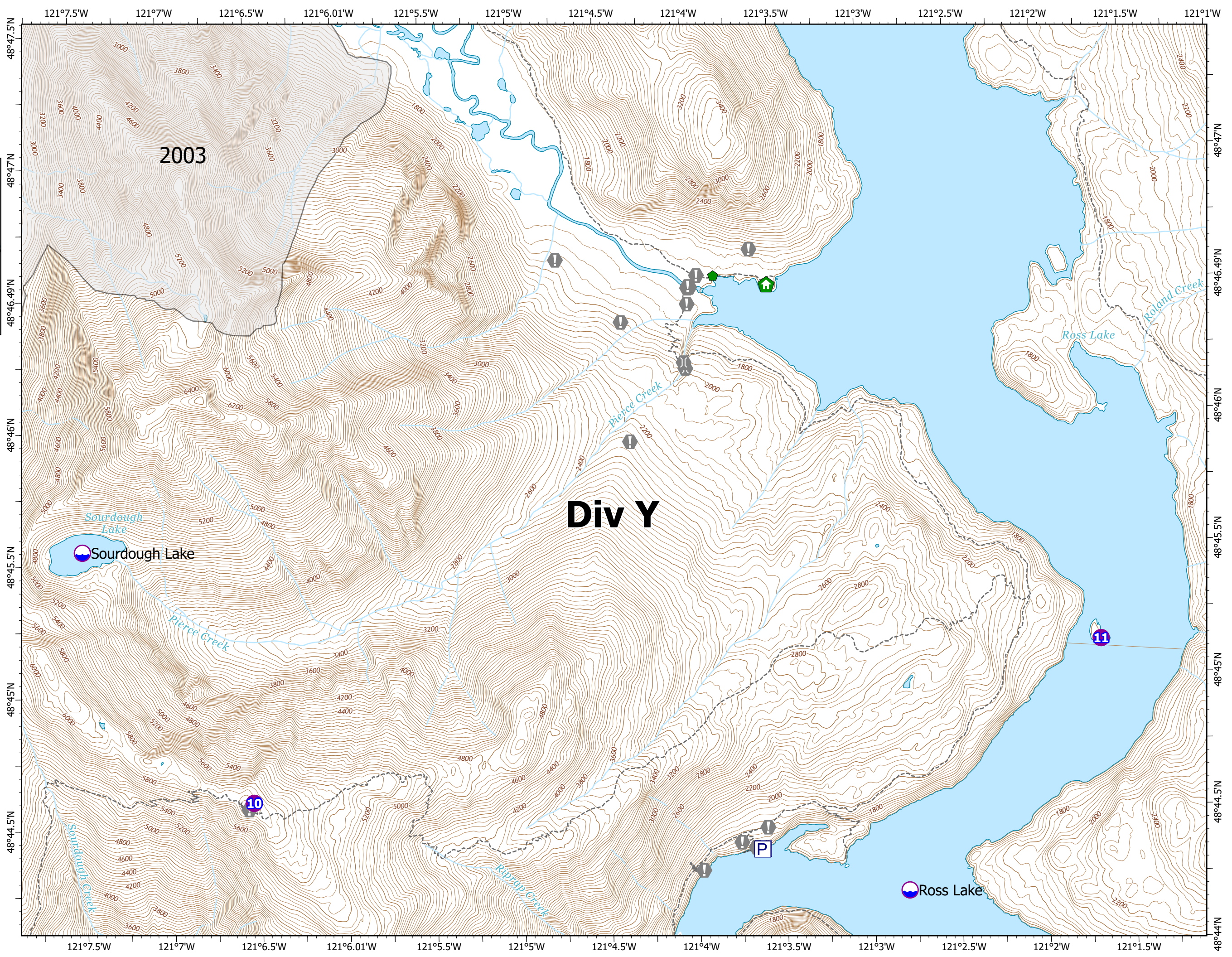


Page Number: 2

- Dip Site
- Helispot
- Division Break
- Value at Risk
- Bridge
- Structure Wrap
- Repair Point
- Other
- Structures
- Historic Structure
- Fire History
- Trail



8/7/2023 2034
Acres from IR and GPS
North American 1983 Datum.
Lat/Long Grid



Operations

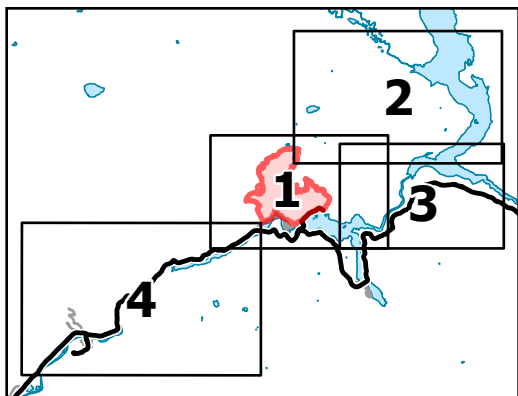
Sourdough

WA-NCP-000262

08/06/23 Day

1440 acres at 08/06/23 1805

0 0.25 0.5 Miles

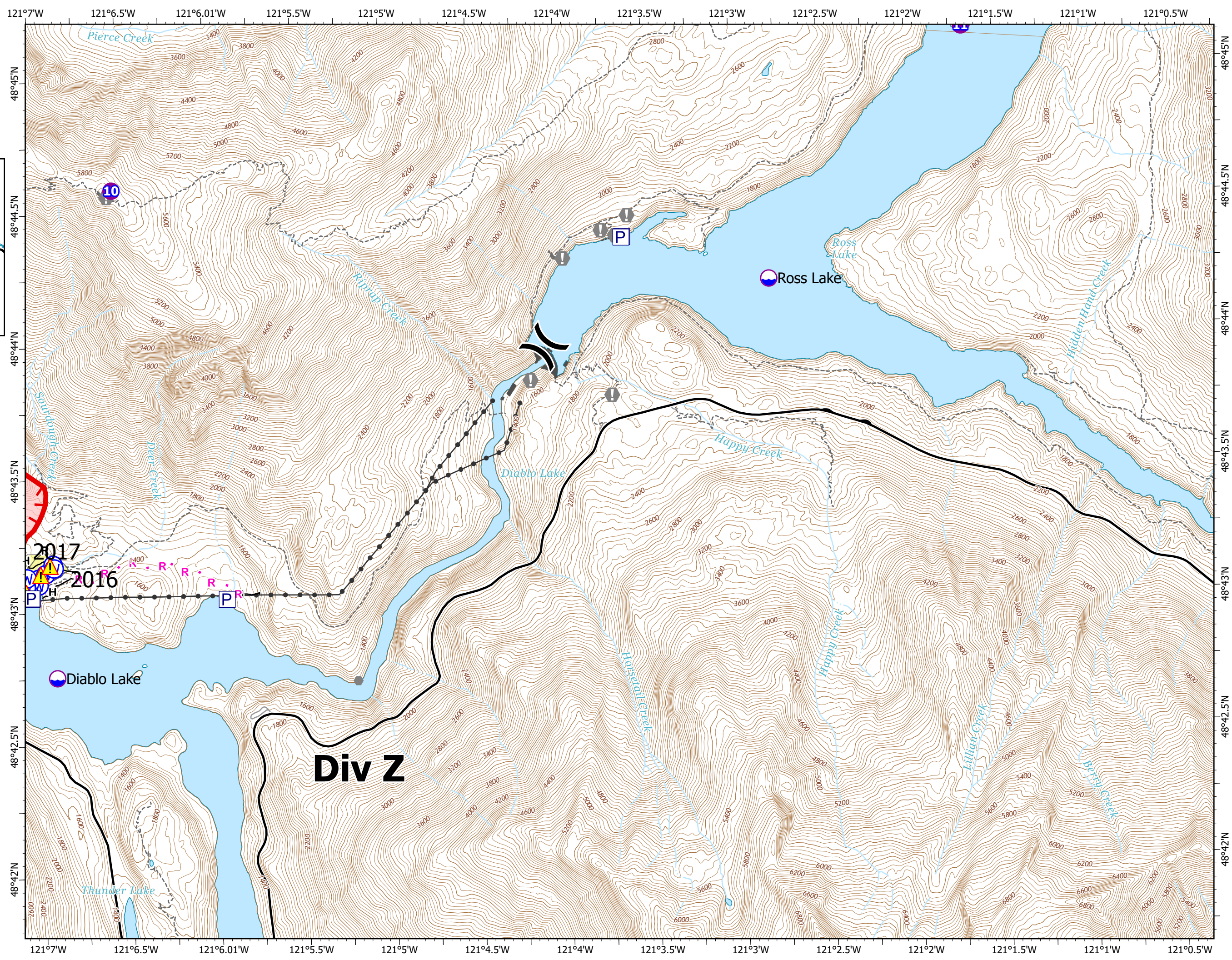


Page Number: 3

- Dip Site
- Helispot
- Division Break
- Value at Risk
- Other
- Repair Point
- Hazard
- Water Source
- Wildfire Daily Fire Perimeter
- Completed Hand Line
- Completed Road as Line
- Planned Road as Line
- Access or Improved Road
- Other
- Uncontained
- Structures
- Historic Structure
- Transmission Lines
- Fuels Treatments
- Fire History
- Trail



8/7/2023 2034
Acres from IR and GPS
North American 1983 Datum.
Lat/Long Grid

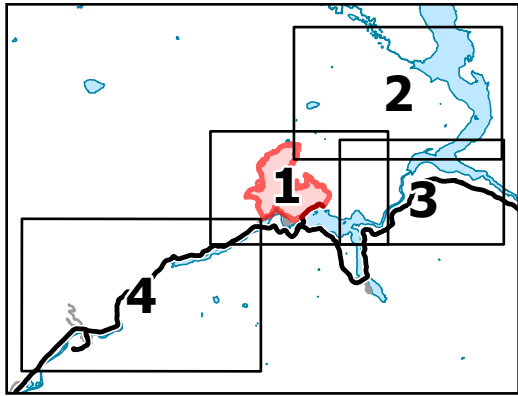


Operations

Sourdough
WA-NCP-000262
08/06/23 Day

1440 acres at 08/06/23 1805

0 0.25 0.5 Miles



Page Number: 4

- Helispot
- ⎵ Division Break
- ▣ Incident Command Post
- ▣ Drop Point
- ⊗ Closure
- ⊙ Landmark
- Structures
- ⚠ Historic Structure
- Transmission Lines
- Fire History
- - - Trail



8/7/2023 2035
Acres from IR and GPS
North American 1983 Datum.
LatLong Grid

