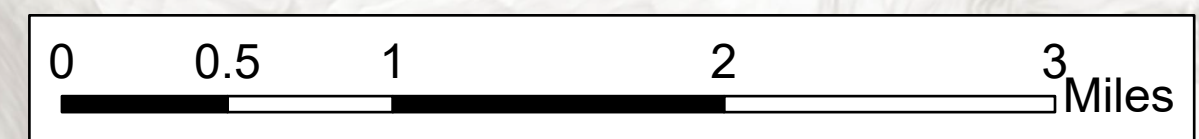


# Air Ops

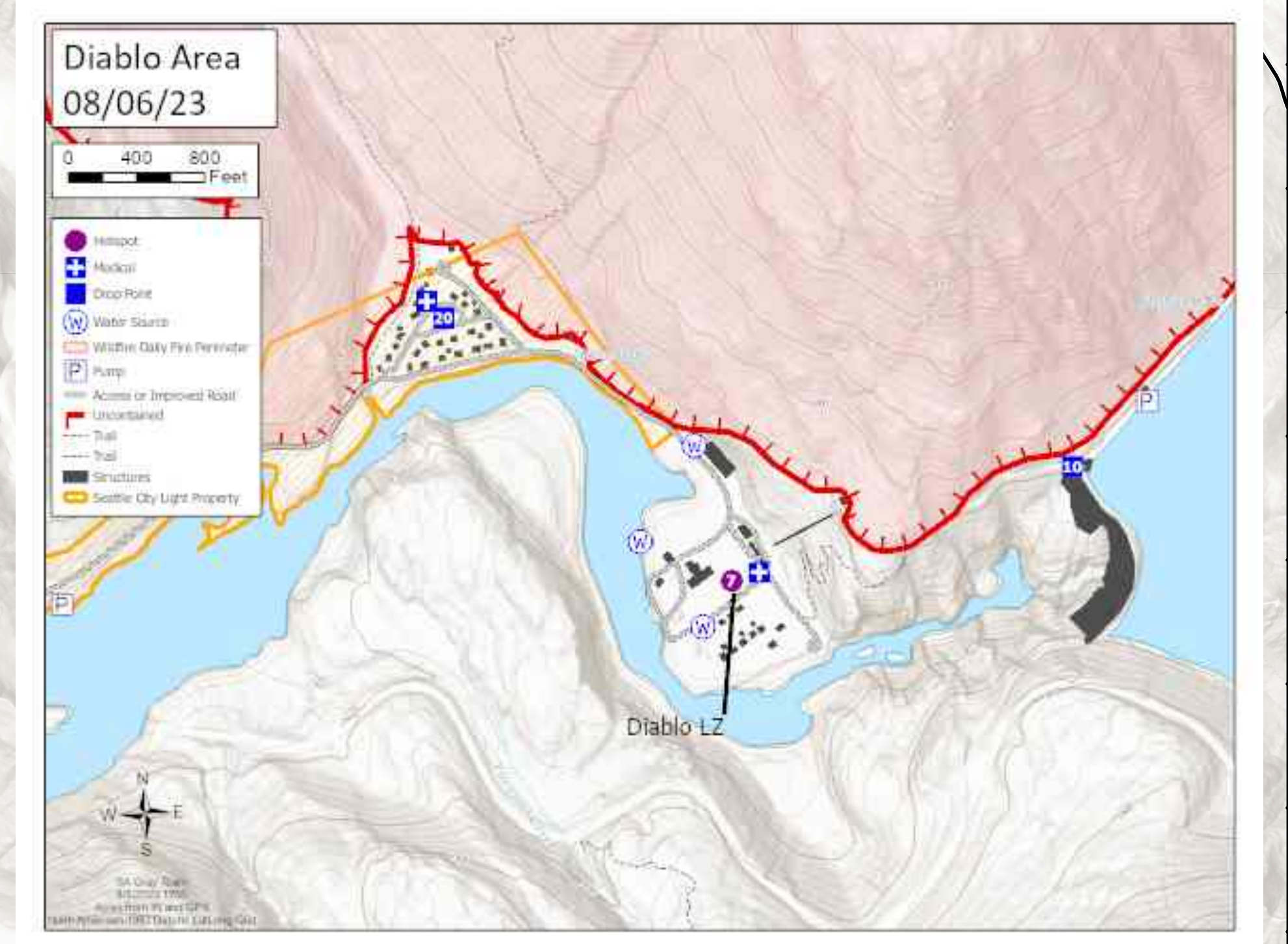
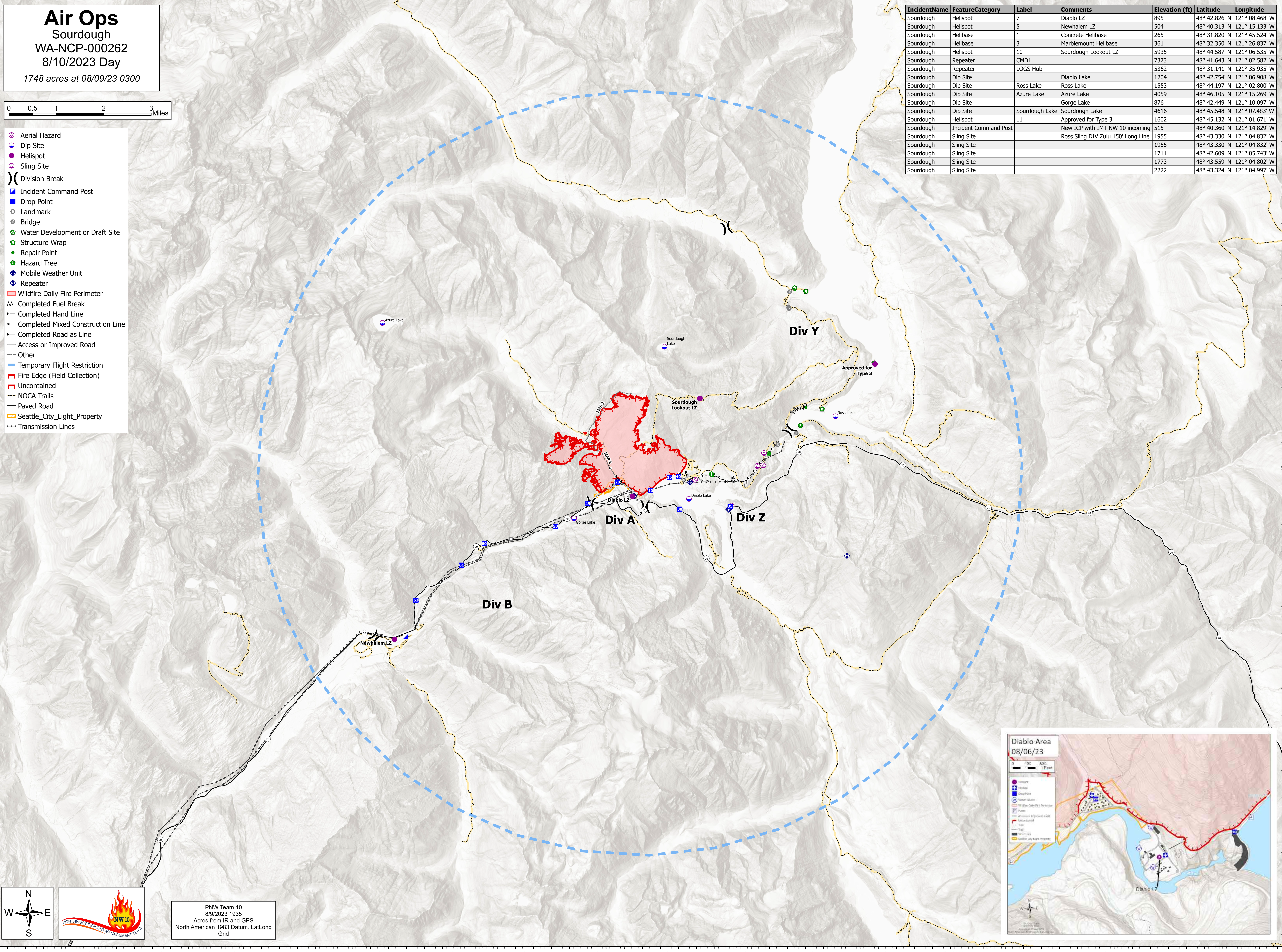
## Sourdough

WA-NCP-000262  
8/10/2023 Day  
1748 acres at 08/09/23 0300



- Aerial Hazard
- Dip Site
- Helispot
- Sling Site
- ) Division Break
- Incident Command Post
- Drop Point
- Landmark
- Bridge
- Water Development or Draft Site
- Structure Wrap
- Repair Point
- Hazard Tree
- ◆ Mobile Weather Unit
- ◆ Repeater
- ▭ Wildfire Daily Fire Perimeter
- ▭ Completed Fuel Break
- ▭ Completed Hand Line
- ▭ Completed Mixed Construction Line
- ▭ Completed Road as Line
- ▭ Access or Improved Road
- ▭ Other
- ▭ Temporary Flight Restriction
- ▭ Fire Edge (Field Collection)
- ▭ Uncontained
- ▭ NOCA Trails
- ▭ Paved Road
- ▭ Seattle\_City\_Light\_Property
- ▭ Transmission Lines

IncidentName	FeatureCategory	Label	Comments	Elevation (ft)	Latitude	Longitude
Sourdough	Helispot	7	Diablo LZ	895	48° 42.826' N	121° 08.468' W
Sourdough	Helispot	5	Newhalem LZ	504	48° 40.313' N	121° 15.133' W
Sourdough	Helibase	1	Concrete Helibase	265	48° 31.820' N	121° 45.524' W
Sourdough	Helibase	3	Marblemount Helibase	361	48° 32.350' N	121° 26.837' W
Sourdough	Helispot	10	Sourdough Lookout LZ	5935	48° 44.587' N	121° 06.535' W
Sourdough	Repeater	CMD1		7373	48° 41.643' N	121° 02.582' W
Sourdough	Repeater	LOGS Hub		5362	48° 31.141' N	121° 35.935' W
Sourdough	Dip Site		Diablo Lake	1204	48° 42.754' N	121° 06.908' W
Sourdough	Dip Site	Ross Lake	Ross Lake	1553	48° 44.197' N	121° 02.800' W
Sourdough	Dip Site	Azure Lake	Azure Lake	4059	48° 46.105' N	121° 15.269' W
Sourdough	Dip Site	Gorge Lake	Gorge Lake	876	48° 42.449' N	121° 10.097' W
Sourdough	Dip Site	Sourdough Lake	Sourdough Lake	4616	48° 45.548' N	121° 07.483' W
Sourdough	Helispot	11	Approved for Type 3	1602	48° 45.132' N	121° 01.671' W
Sourdough	Incident Command Post		New ICP with IMT NW 10 incoming	515	48° 40.360' N	121° 14.829' W
Sourdough	Sling Site		Ross Sling DIV Zulu 150' Long Line	1955	48° 43.330' N	121° 04.832' W
Sourdough	Sling Site			1955	48° 43.330' N	121° 04.832' W
Sourdough	Sling Site			1711	48° 42.609' N	121° 05.743' W
Sourdough	Sling Site			1773	48° 43.559' N	121° 04.802' W
Sourdough	Sling Site			2222	48° 43.324' N	121° 04.997' W



PNW Team 10  
8/9/2023 1935  
Acres from IR and GPS  
North American 1983 Datum, LatLong  
Grid