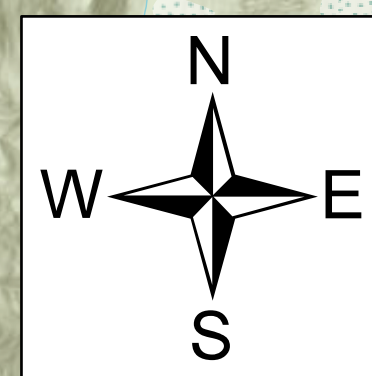


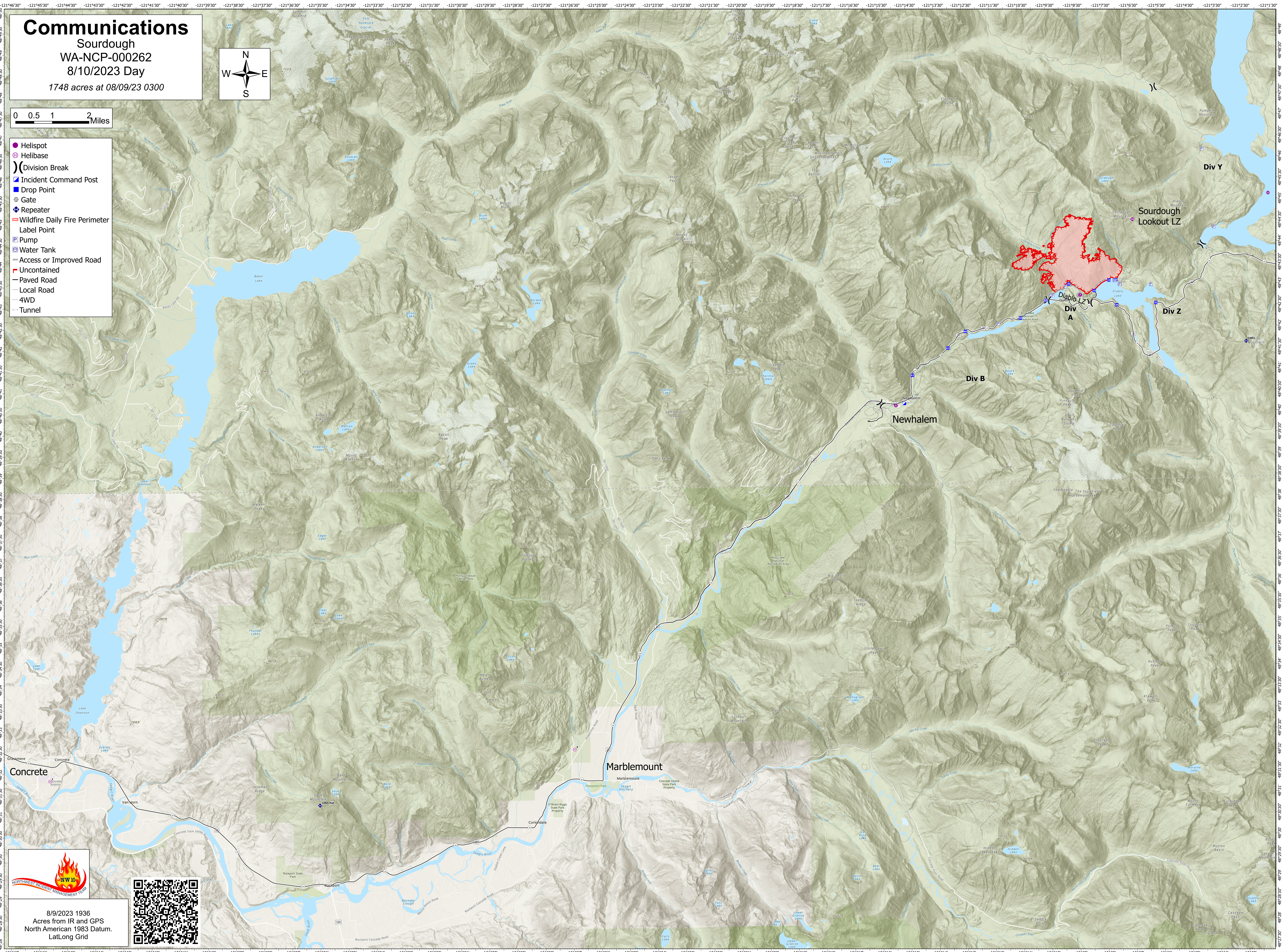
# Communications

Sourdough  
WA-NCP-000262  
8/10/2023 Day  
1748 acres at 08/09/23 0300



0 0.5 1 2 Miles

- Helispot
- Ⓜ Helibase
- ) Division Break
- ▣ Incident Command Post
- Drop Point
- Ⓜ Gate
- Ⓜ Repeater
- ▬ Wildfire Daily Fire Perimeter
- Label Point
- Ⓜ Pump
- Ⓜ Water Tank
- ▬ Access or Improved Road
- ▬ Uncontaminated
- ▬ Paved Road
- ▬ Local Road
- ▬ 4WD
- ▬ Tunnel



8/9/2023 1936  
Acres from IR and GPS  
North American 1983 Datum.  
LatLong Grid

