

121°6.01'W

121°4'W

121°2'W

48°48'N

48°48'N

IAP
Div Y
 Sourdough
 WA-NCP-000262
 8/10/2023 Day
 1748 acres at 08/09/23 0300



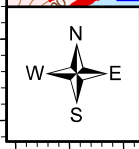
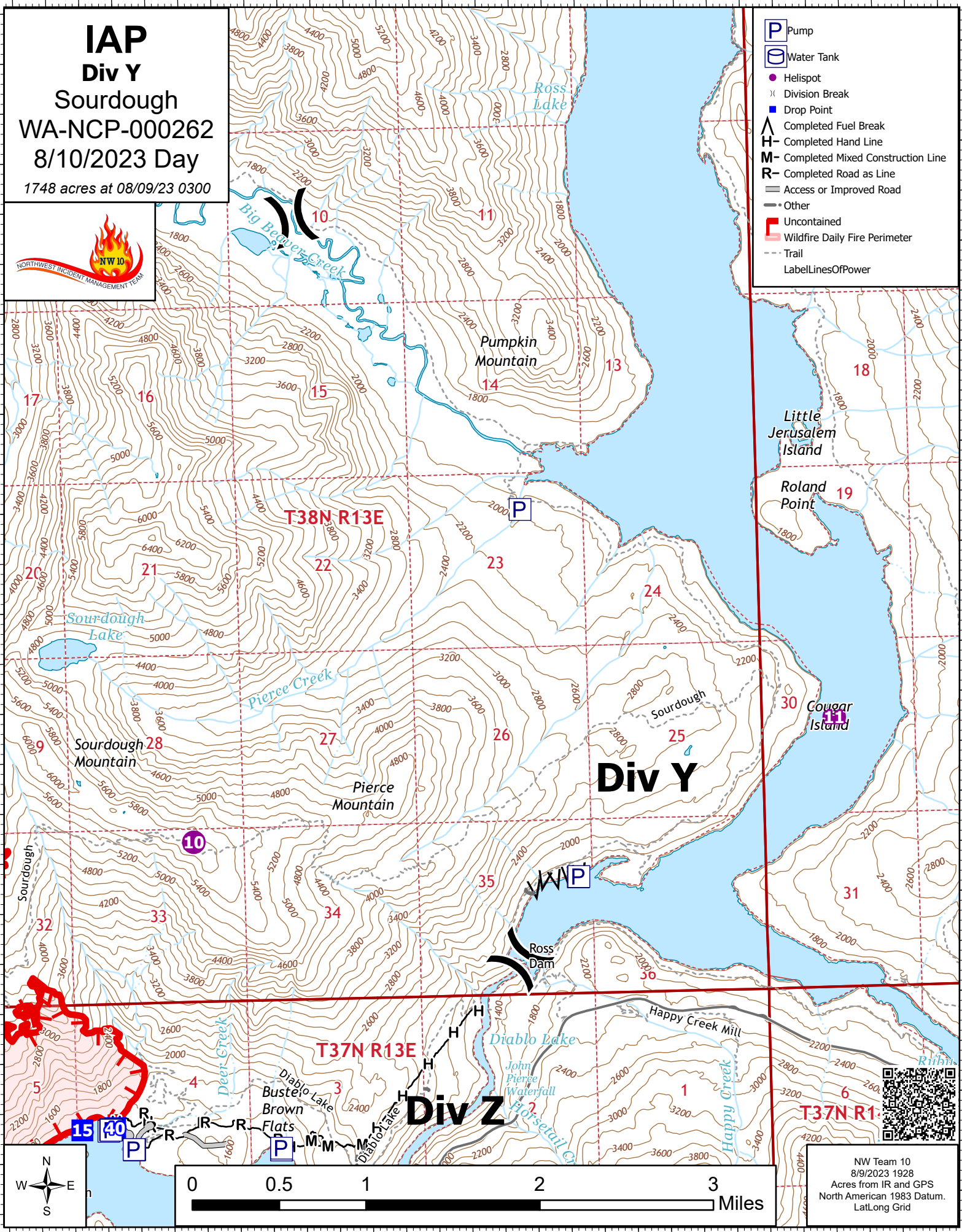
- Pump
- Water Tank
- Helispot
- Division Break
- Drop Point
- Completed Fuel Break
- Completed Hand Line
- Completed Mixed Construction Line
- Completed Road as Line
- Access or Improved Road
- Other
- Uncontained Wildfire Daily Fire Perimeter
- Trail
- LabelLinesOfPower

48°46'N

48°46'N

48°44'N

48°44'N



NW Team 10
 8/9/2023 1928
 Acres from IR and GPS
 North American 1983 Datum.
 Lat/Long Grid

121°8'W

121°6.01'W

121°4'W

121°2'W