

121°8'W

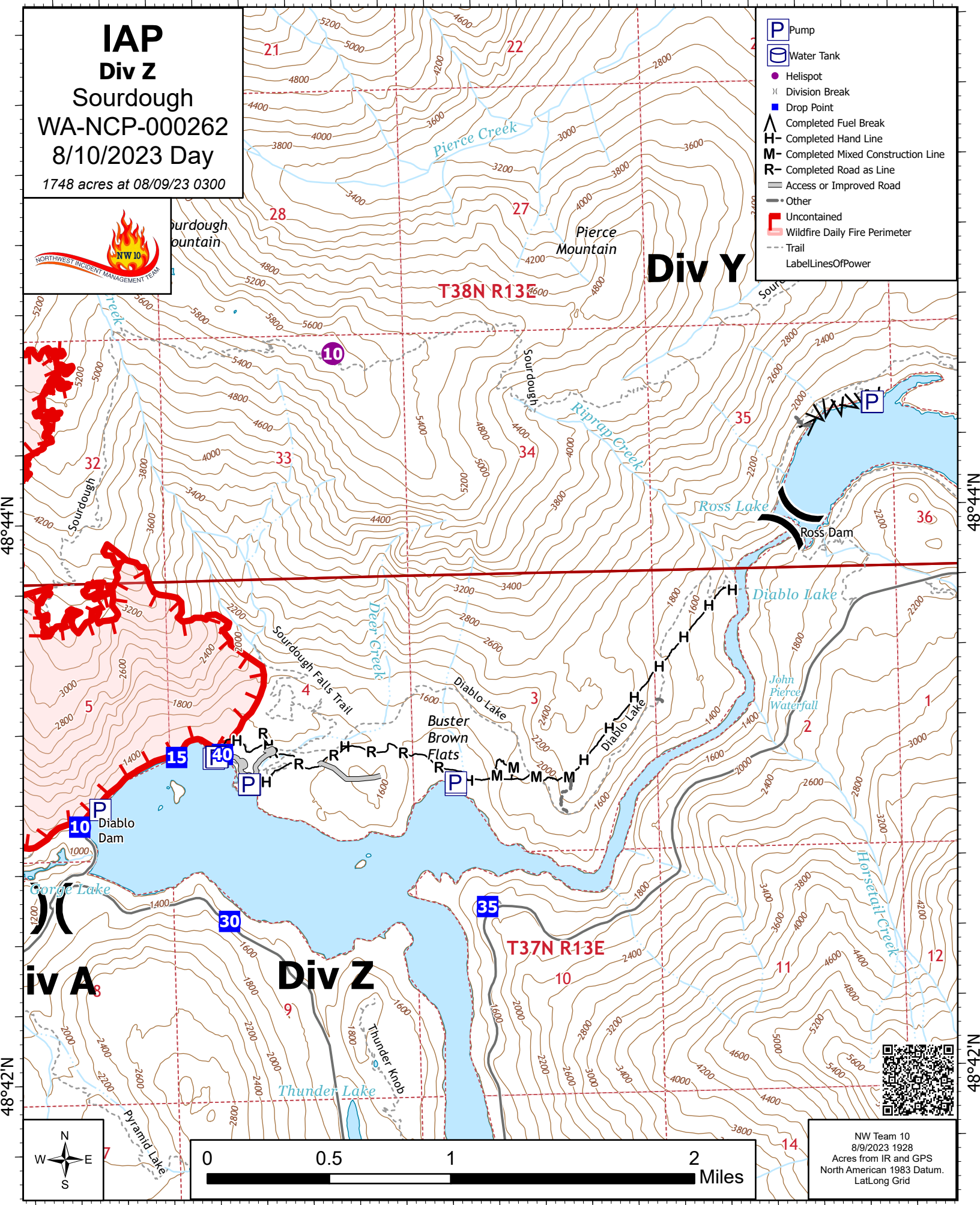
121°6.01'W

121°4'W

**IAP**  
**Div Z**  
 Sourdough  
 WA-NCP-000262  
 8/10/2023 Day  
 1748 acres at 08/09/23 0300



- P Pump
- W Water Tank
- Helispot
- X Division Break
- Drop Point
- ▲ Completed Fuel Break
- H Completed Hand Line
- M Completed Mixed Construction Line
- R Completed Road as Line
- Access or Improved Road
- Other
- Uncontained
- Wildfire Daily Fire Perimeter
- Trail
- LabelLinesOfPower

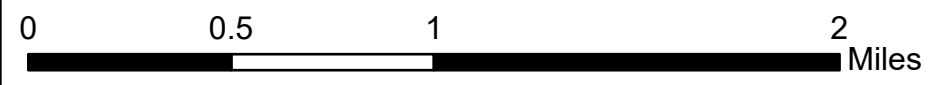


48°44'N

48°44'N

48°42'N

48°42'N



NW Team 10  
 8/9/2023 1928  
 Acres from IR and GPS  
 North American 1983 Datum.  
 Lat/Long Grid



121°8'W

121°6.01'W

121°4'W