

121°12'W 121°10'W 121°8'W 121°6.01'W

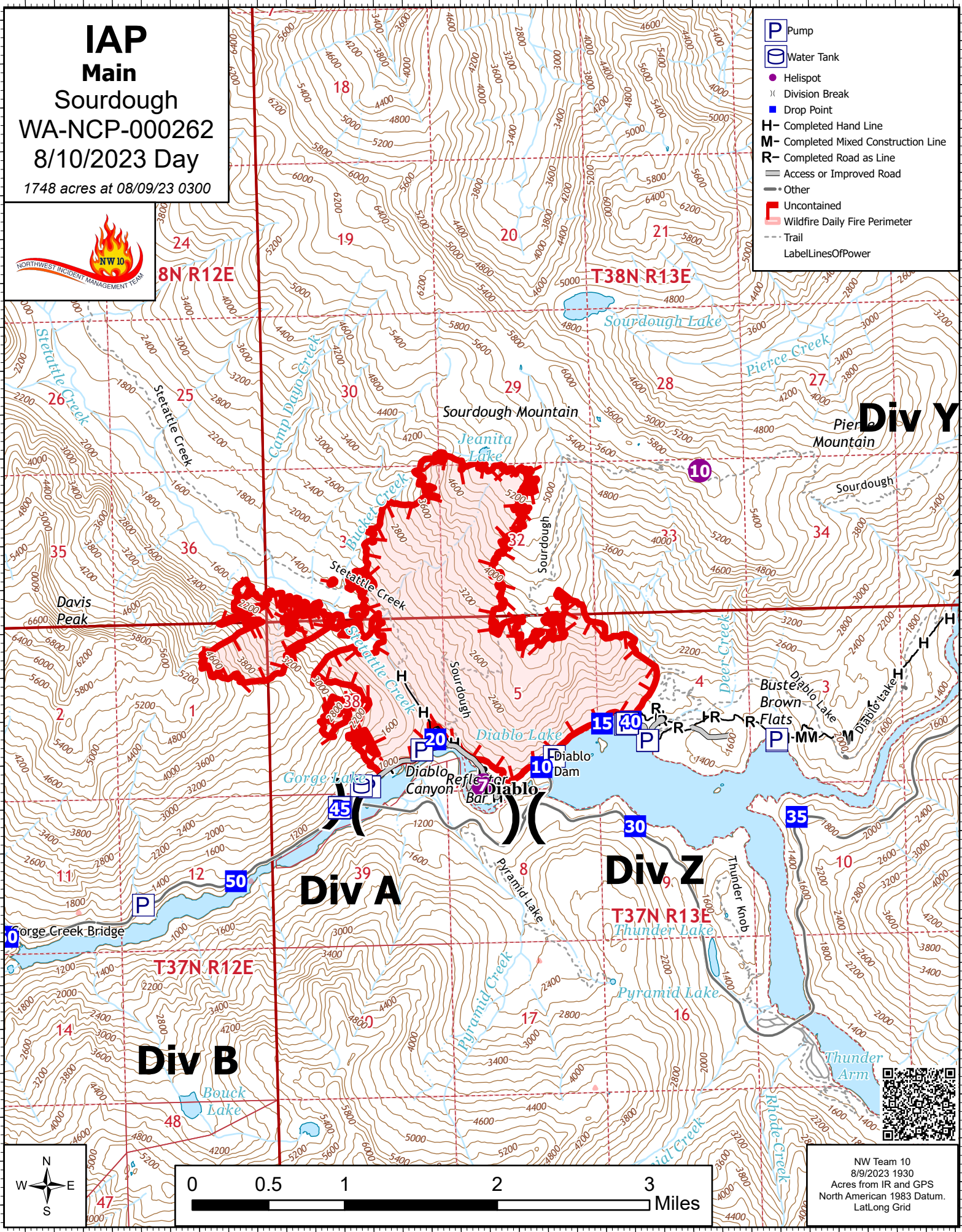
IAP
Main
Sourdough
WA-NCP-000262
8/10/2023 Day
1748 acres at 08/09/23 0300



- Pump
- Water Tank
- Helispot
- Division Break
- Drop Point
- H- Completed Hand Line
- M- Completed Mixed Construction Line
- R- Completed Road as Line
- Access or Improved Road
- Other
- Uncontained
- Wildfire Daily Fire Perimeter
- Trail
- LabelLinesOfPower

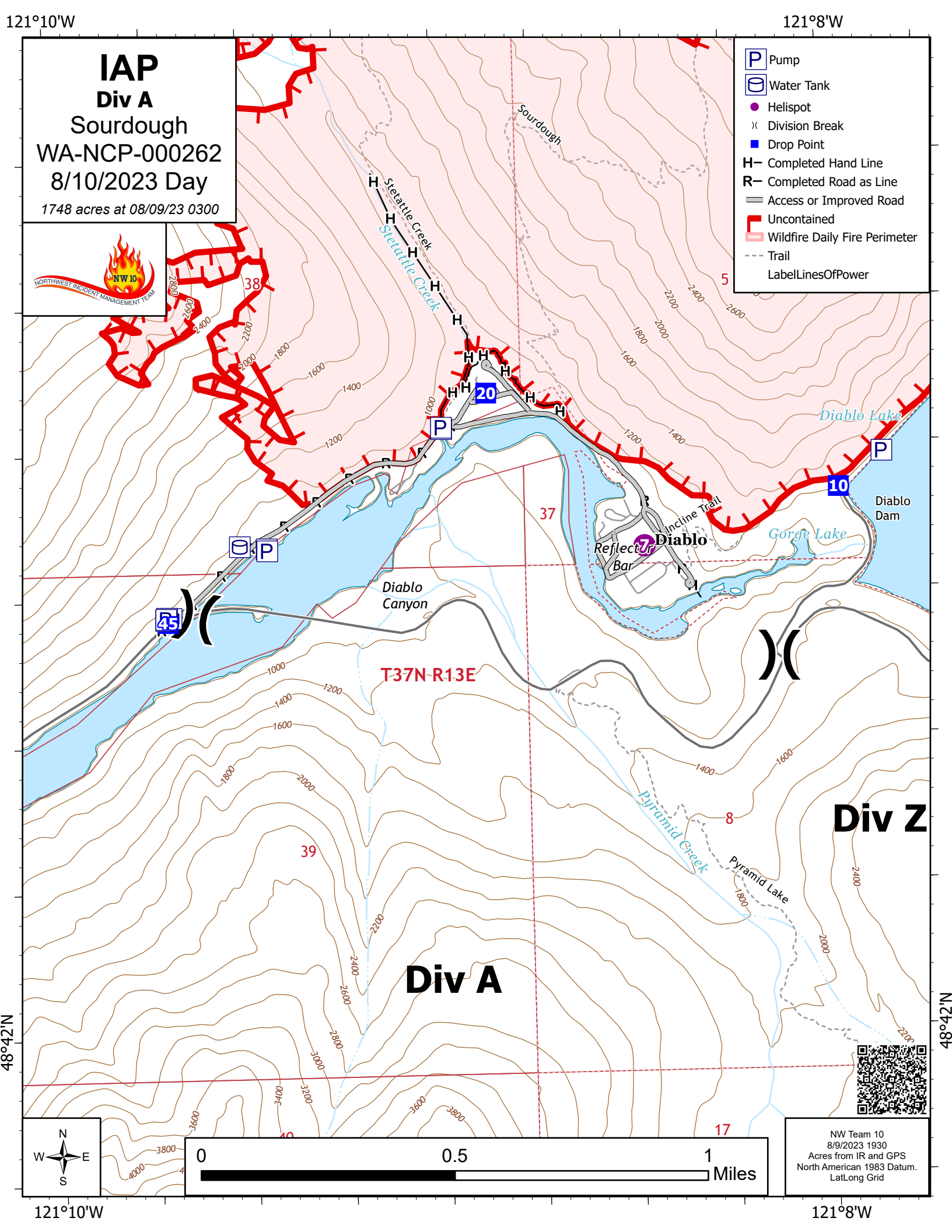
48°46'N
48°44'N
48°42'N

48°46'N
48°44'N
48°42'N



NW Team 10
8/9/2023 1930
Acres from IR and GPS
North American 1983 Datum.
Lat/Long Grid

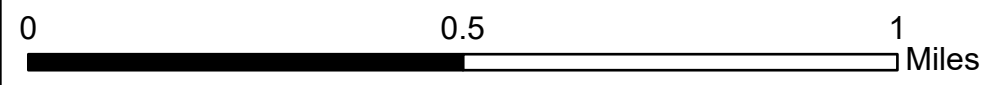




IAP
Div A
Sourdough
WA-NCP-000262
8/10/2023 Day
1748 acres at 08/09/23 0300



- Pump
- Water Tank
- Helispot
- Division Break
- Drop Point
- Completed Hand Line
- Completed Road as Line
- Access or Improved Road
- Uncontained
- Wildfire Daily Fire Perimeter
- Trail
- LabelLinesOfPower



NW Team 10
8/9/2023 1930
Acres from IR and GPS
North American 1983 Datum.
LatLong Grid

121°10'W

121°8'W

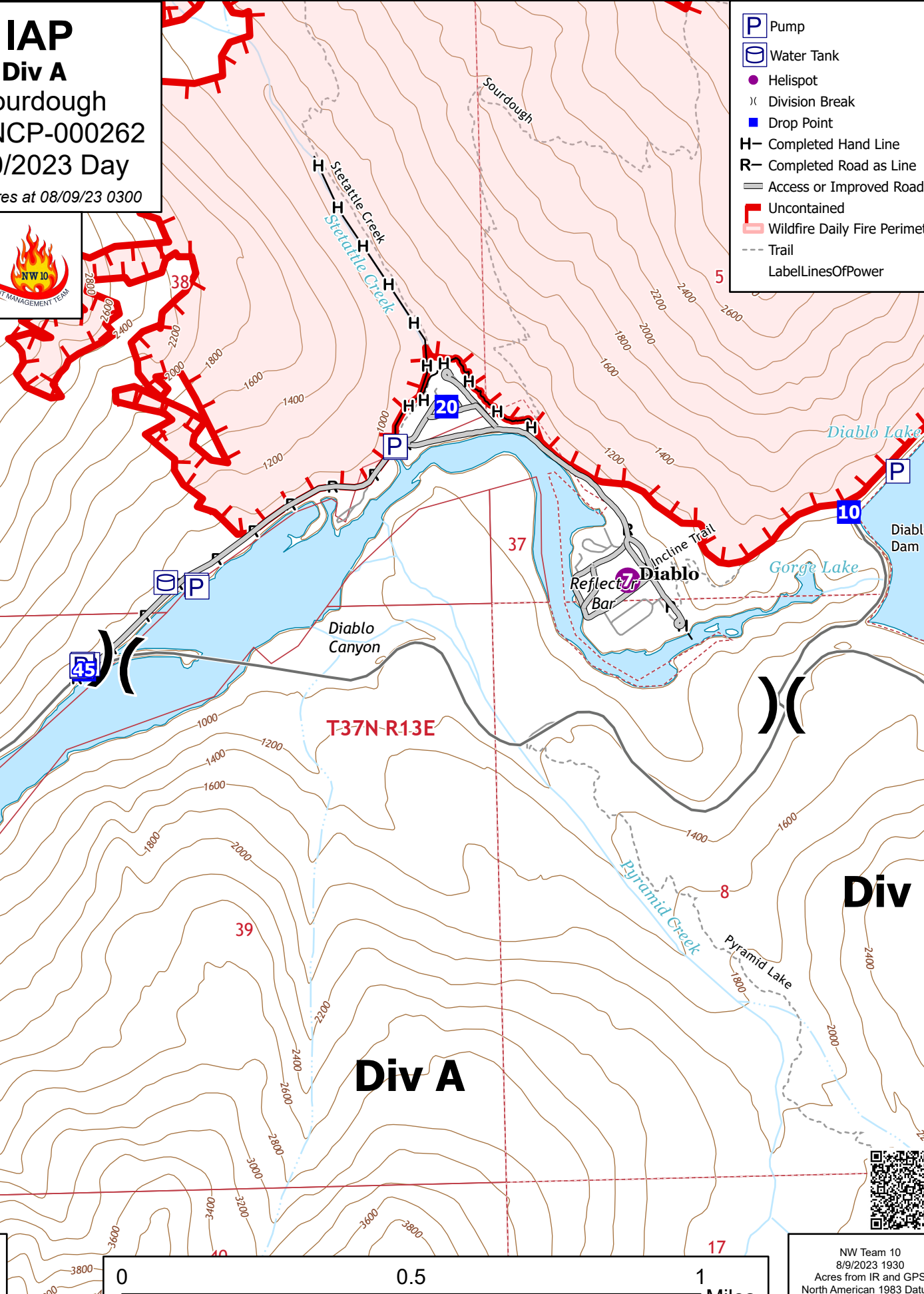
48°42'N

48°42'N

Div A

Div Z

T37N-R13E



121°8'W

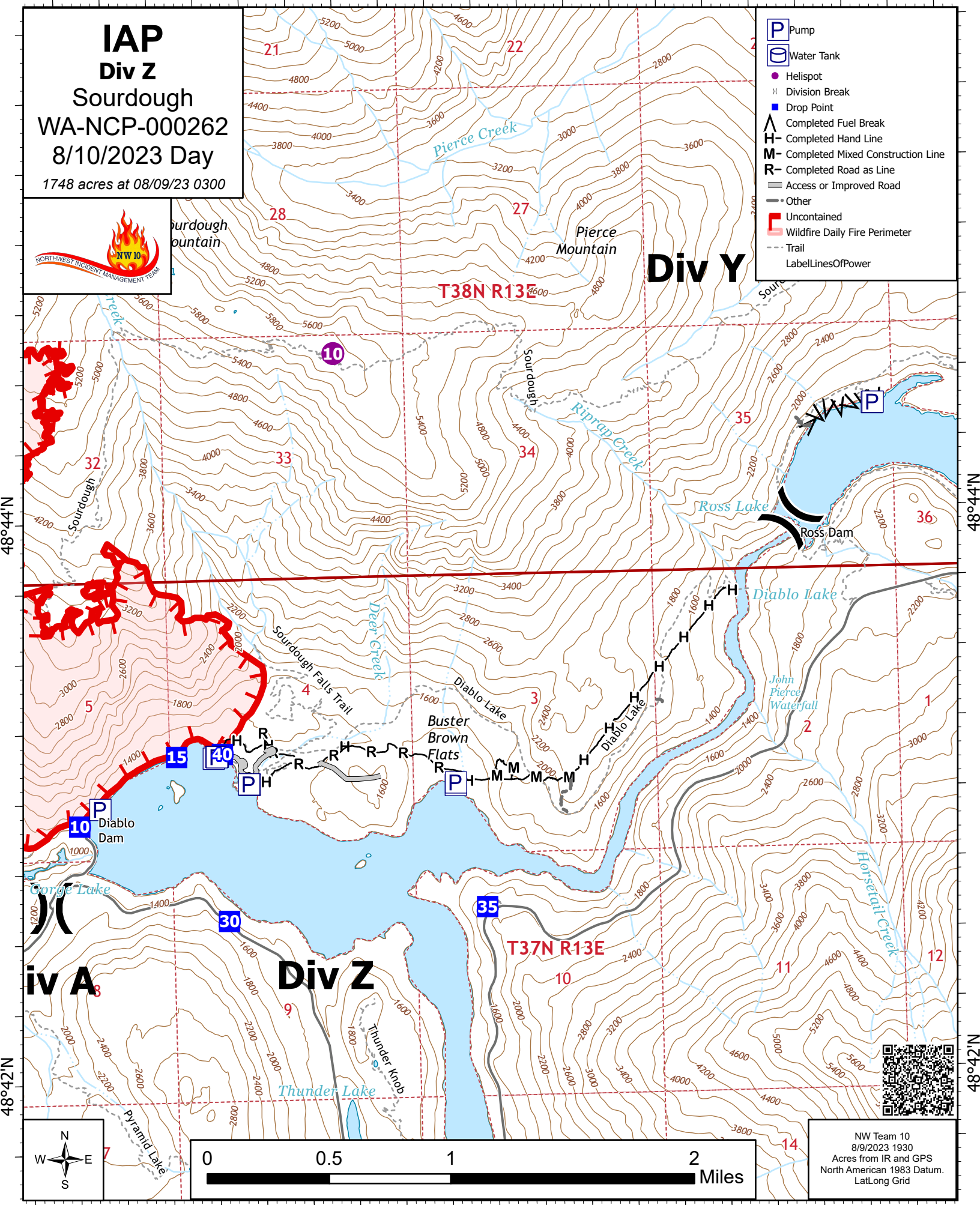
121°6.01'W

121°4'W

IAP
Div Z
 Sourdough
 WA-NCP-000262
 8/10/2023 Day
 1748 acres at 08/09/23 0300



- P Pump
- W Water Tank
- Helispot
- X Division Break
- Drop Point
- ▲ Completed Fuel Break
- H Completed Hand Line
- M Completed Mixed Construction Line
- R Completed Road as Line
- Access or Improved Road
- Other
- Uncontained
- Wildfire Daily Fire Perimeter
- Trail
- LabelLinesOfPower

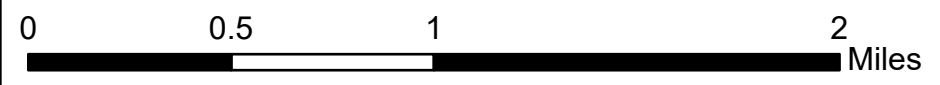


48°44'N

48°44'N

48°42'N

48°42'N



NW Team 10
 8/9/2023 1930
 Acres from IR and GPS
 North American 1983 Datum.
 Lat/Long Grid



121°8'W

121°6.01'W

121°4'W

121°6.01'W

121°4'W

121°2'W

48°48'N

48°48'N

IAP
Div Y
 Sourdough
 WA-NCP-000262
 8/10/2023 Day
 1748 acres at 08/09/23 0300



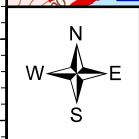
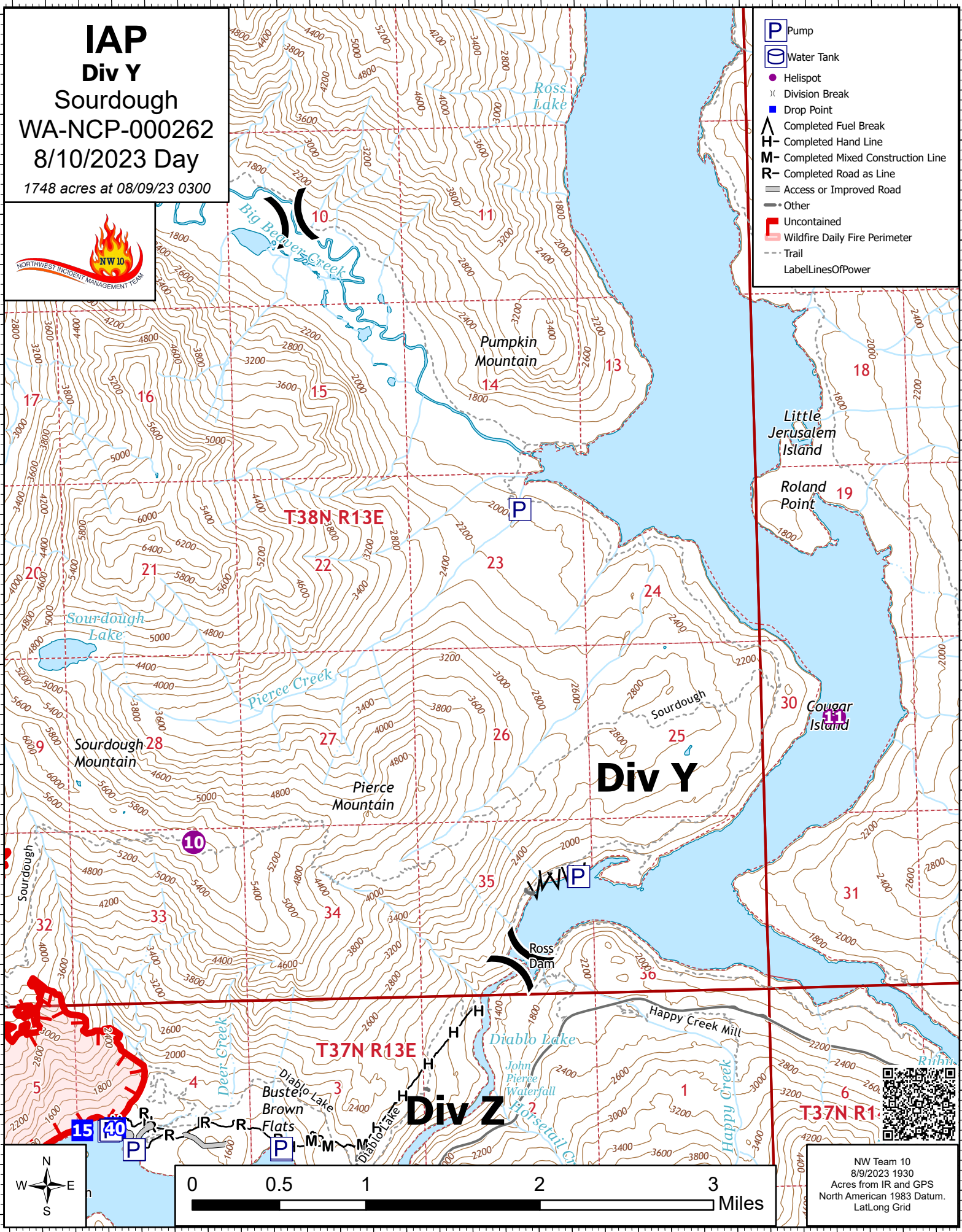
- Pump
- Water Tank
- Helispot
- Division Break
- Drop Point
- Completed Fuel Break
- Completed Hand Line
- Completed Mixed Construction Line
- Completed Road as Line
- Access or Improved Road
- Other
- Uncontained Wildfire Daily Fire Perimeter
- Trail
- LabelLinesOfPower

48°46'N

48°46'N

48°44'N

48°44'N



NW Team 10
 8/9/2023 1930
 Acres from IR and GPS
 North American 1983 Datum.
 Lat/Long Grid

121°8'W

121°6.01'W

121°4'W

121°2'W

121°16'W

121°14'W

121°12'W

121°10'W

IAP
Div B
 Sourdough
 WA-NCP-000262
 8/10/2023 Day
 1748 acres at 08/09/23 0300



- Pump
- Water Tank
- Helispot
- Division Break
- Incident Command Post
- Drop Point
- Completed Hand Line
- Completed Road as Line
- Access or Improved Road
- Uncontained
- Wildfire Daily Fire Perimeter
- Trail
- LabelLinesOfPower

48°44'N

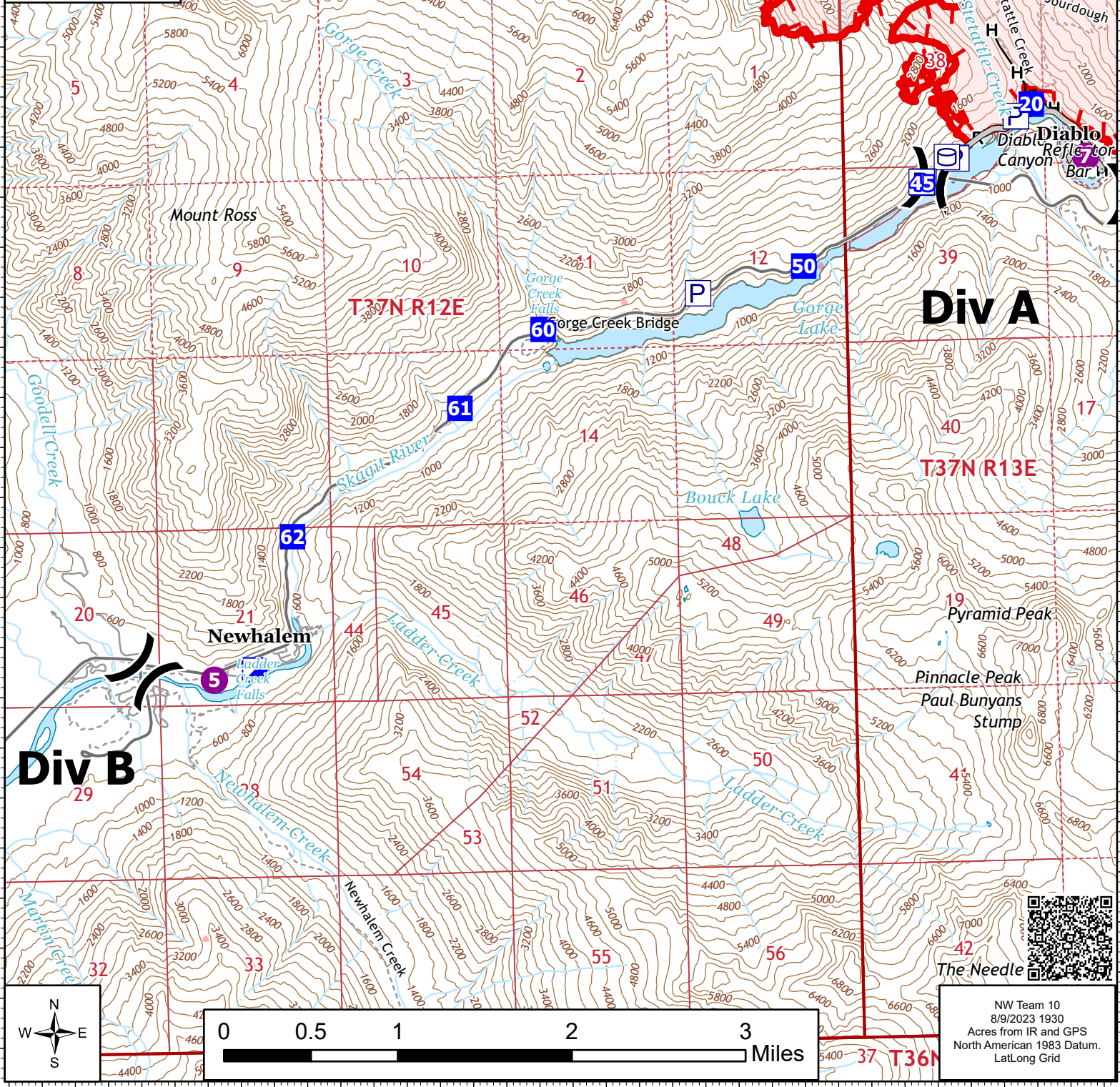
48°44'N

48°42'N

48°42'N

48°40'N

48°40'N



Div B

Div A



NW Team 10
 8/9/2023 1930
 Acres from IR and GPS
 North American 1983 Datum.
 Lat/Long Grid

121°16'W

121°14'W

121°12'W

121°10'W